



Aerial view of Murrumbateman Public School

# Murrumbateman Public School

Day 1 Term 1 Welcome Pack | January 2023

## Welcome to your new school

We're excited Murrumbateman Public School is now open and ready for students to use. The new school includes:



New modern teaching spaces and facilities for up to **370** students



Flexible learning spaces



Covered outdoor learning area (COLA)



Library



Hall



Sports court



Yarning circles



Landscaped play spaces

Thank you for your patience during construction. We are delighted to deliver this project for the Murrumbateman community and hope you enjoy your new school.

# Message from your Principal

Yumalundi and welcome to Murrumbateman Public School.

I am honoured to be the foundation principal of the new Murrumbateman Public School. I know how hard the community has worked to have this school established and to create a learning hub that has strong connections to your community.

Our first cohort of students and families will experience something very special. Your new school is now open and as of today you are attending a new school and will be part of the creation of a unique learning environment that you will help to build and shape.

Our new school has been designed to foster collaboration and a sense of community, with a mix of learning spaces that allow cooperation between classes and year groups. There is also strong connection to the outdoors, with learning areas opening out onto multiple green spaces and gardens so teachers can incorporate outdoor learning.

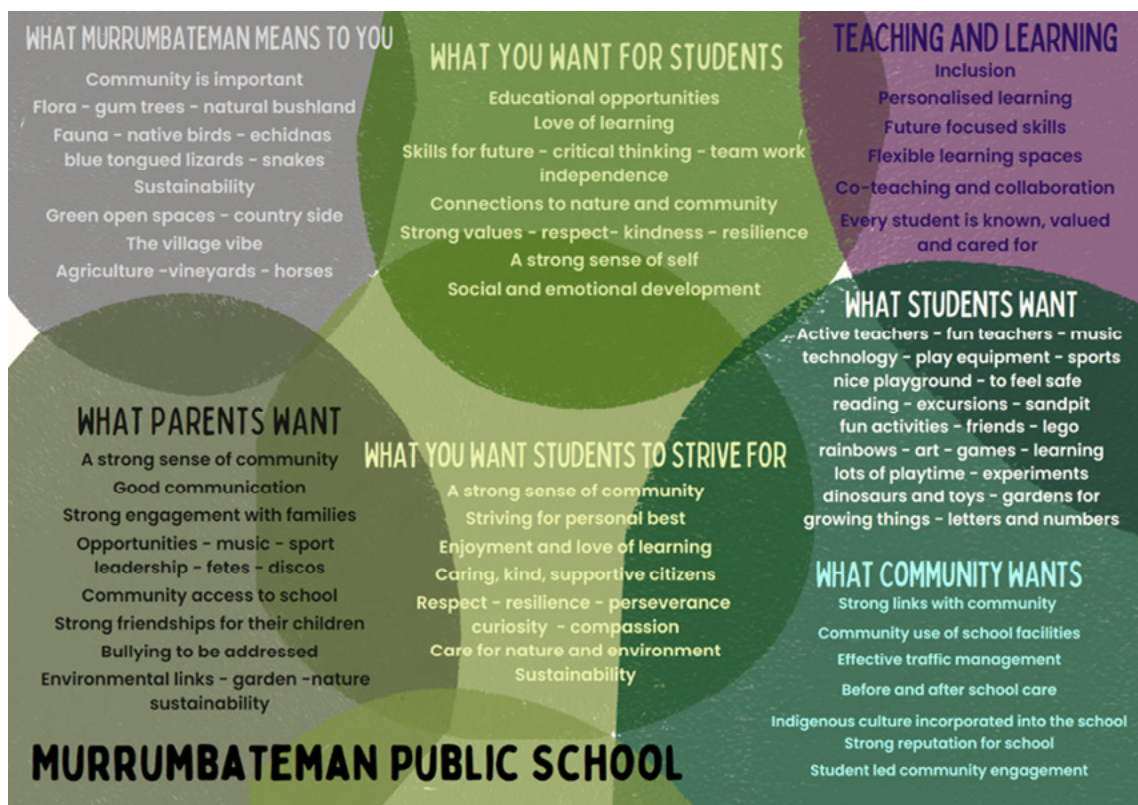
A school is more than its buildings, it is about the people and the students who work and learn within those buildings. Murrumbateman Public School will deliver strong educational outcomes for students in an inclusive and flexible learning environment. Our school will be built on foundations of inclusion, a strong sense of belonging for all members of our community, a place where every member of our school community is valued and celebrated.

Teaching and learning will be underpinned by collaboration and co-teaching to provide learning experiences that are engaging, foster leadership and social responsibility and will be tailored to the learning styles and needs of our students.

Represented below are the community's thoughts on what was important for a school in Murrumbateman, as part of initial community consultation.

Our school will work in close partnership with parents and the wider community to provide strong links and connections for our students.

**Liz Beasley, Principal**





# Connection to Country and our logo

The school will have a strong connection to Country, with features included in consultation with local Elders from the Ngunnawal People, the traditional custodians of the land on which the school has been built.

Originally the Ngunnawal people traversed the hills and ranges of Murrumbateman as a pathway to many places. Pathways is now a key theme across all our signage, with the topography of the northern mountains etched across all our signs. These local mountains have been incorporated into our house names — Mundoonen, Cullarin and Midgee.

The logo for Murrumbateman has three distinct elements:

- outer form is drawn from the widely used Indigenous symbol for person, representative of the whole person
- the central pathways graphic is representative of the natural environment, landscape and water to nourish the earth
- the circular form and smaller dots is the widely used Indigenous symbol for star, rising above the landscape.

Read together the form can be seen as: the individual reaching for the stars with the environment at its heart. The whole person is integral to contemporary educational philosophy.

The natural environment, landscape and water and its health is of primary interest to us and to education and is an important factor in the rural community of Murrumbateman.

The stars are an archetypal symbol of aspiration and achievement –aiming high and being your best –not the best by academic standards or compared to others but one’s own best.

The integration of two universal Indigenous symbols in this simple form establishes the intent of the school to foster Indigenous inclusion of First Nations people.



**MURRUMBATEMAN**  
PUBLIC SCHOOL



Main entrance



# Connection to Country and our logo



Outdoor learning area with yarning circles and dry creek bed



School wayfinding



School wayfinding



Murrumbateman Public School



# Flexible learning spaces

The new facilities incorporate flexible learning spaces with moveable furniture and adaptable room configurations.

The learning spaces are technology-enabled to serve multiple learning contexts from large class groups to small clusters, providing better opportunities for collaboration and personalised learning.



# Site map







Murrumbateman School Hall

## Frequently asked questions

---

### What are the school hours?

School hours are: 9 am–3 pm. The grounds will be supervised from 8:30 am.

### What are the school office hours?

8:30 am–3:15 pm each school day.

### Is there a drop off and pick up zone?

The kiss and drop zone is at the front of the school on Fairley Street.

For pick up, students will gather in the fenced off area at the front of B Block with a staff member. Staff will guide students to their vehicle when it is their turn to be picked up.

All vehicles must use the kiss and drop zone to pick up and drop off students. This zone operates as a no parking zone, which means you may stop to drop off or pick up children for a maximum of two minutes.

Please note, the Health Hub car park entrance, marked by boom gates, is accessed via the school driveway. Please do not park in the school driveway, block or stop at the Health Hub car park entrance, or park in the Health Hub car park as this may stop ambulances accessing the Health Hub in an emergency. If you are not visiting the Health Hub, you will be charged on exiting their car park.

### Is there parking available?

The front parking lot on Fairley Street is staff parking only. Parking is available on Rose Street, adjacent to the school.

### Is there somewhere for students to park bikes and scooters?

Yes, there is bike and scooter parking on the school grounds (see school map).

### Will there be Out of Hours School Care (OHSC) available?

Yes, Big Childcare will provide Out of Hours school care. Please check the school's website [murrumbateman-p.schools.nsw.gov.au](https://murrumbateman-p.schools.nsw.gov.au) for updates and contact details as they become available.



## Contact us

For more information about this project, contact School Infrastructure NSW:

**Website:** [schoolinfrastructure.nsw.gov.au](https://schoolinfrastructure.nsw.gov.au)

**Email:** [schoolinfrastructure@det.nsw.edu.au](mailto:schoolinfrastructure@det.nsw.edu.au)

**Phone:** 1300 482 651

For information about school activities and operations, contact the school directly:

**Principal:** Liz Beasley

**Website:** [murrumbateman-p.schools.nsw.gov.au](https://murrumbateman-p.schools.nsw.gov.au)

**Email:** [murrumbateman-p.school@det.nsw.edu.au](mailto:murrumbateman-p.school@det.nsw.edu.au)

**Address:** 2 Fairley Street, Murrumbateman 2582 NSW

## Stay informed



### Website

Stay up to date by visiting the School Infrastructure NSW website  
[schoolinfrastructure.nsw.gov.au](https://schoolinfrastructure.nsw.gov.au)



### Email

Contact the Community Engagement team by emailing  
[schoolinfrastructure@det.nsw.edu.au](mailto:schoolinfrastructure@det.nsw.edu.au)



### Phone

Contact us between 9 am and 5 pm, Monday to Friday on **1300 482 651**