



# Murrumbateman Public School

Information pack | December 2022

The NSW Government is investing \$8.6 billion in school infrastructure over the next four years, continuing its program to deliver 160 new and upgraded schools to support communities across NSW. This builds on the more than \$9.1 billion invested in projects delivered since 2017, a program of \$17.7 billion in public education infrastructure.

The NSW Department of Education is committed to delivering new and upgraded schools for communities across NSW. The delivery of these important projects is essential to the future learning needs of our students and supports growth in the local economy.



New modern teaching spaces and facilities for up to **370** students



Flexible learning spaces



Covered outdoor learning area (COLA)



Library



Hall



Sports court



Yarning circles



Landscaped play spaces

Enrolments are now open. Visit [murrumbateman-p.schools.nsw.gov.au](https://murrumbateman-p.schools.nsw.gov.au) to find out more.

# We're looking forward to welcoming new students on Day 1 Term 2023

We're excited to advise that we've finished building Murrumbateman Public School. The landscaping is the final task, and it is well underway. We're also doing the final checks and working with school staff to make sure everything is ready for new students at the school.

## Final steps

In mid-December, the school staff will move in and get ready to welcome new students next year!

# Starting at Murrumbateman Public School in 2023

The first day at school for all students is Tuesday 31 January. We encourage families to arrive on the first day from 8:15 am, ready to start the school opening ceremony at 9 am.

On the first day, the school will be celebrating the opening, with lots of photos, a coffee cart, a book fair where students can order books and more. Parents and carers are encouraged to join and celebrate.

## School hours

School hours are: 9 am to 3 pm. The grounds will be supervised from 8:30 am.  
School office hours are: 8:30 am to 3:15 pm each school day.

## Getting to school

Travel to Murrumbateman Public School for staff and students will be easy with convenient public transport, dedicated staff parking and a drop off and pick up zone. Please contact the school to find out more about bus routes as they are available via email: [murrumbateman-p.school@det.nsw.edu.au](mailto:murrumbateman-p.school@det.nsw.edu.au).

## Active transport to school

Murrumbateman Public School has bike and scooter parking. Anyone arriving by foot, bike or scooter including students with parents or carers must use the back gate (near Fairley Childcare Centre) to enter the school.

## Public transport

The bus stop is out the front of the Health Hub on Fairley Street. Students who need to catch a bus will gather in the hall each afternoon and will be walked to the bus stop with a staff member.

## Kiss and drop

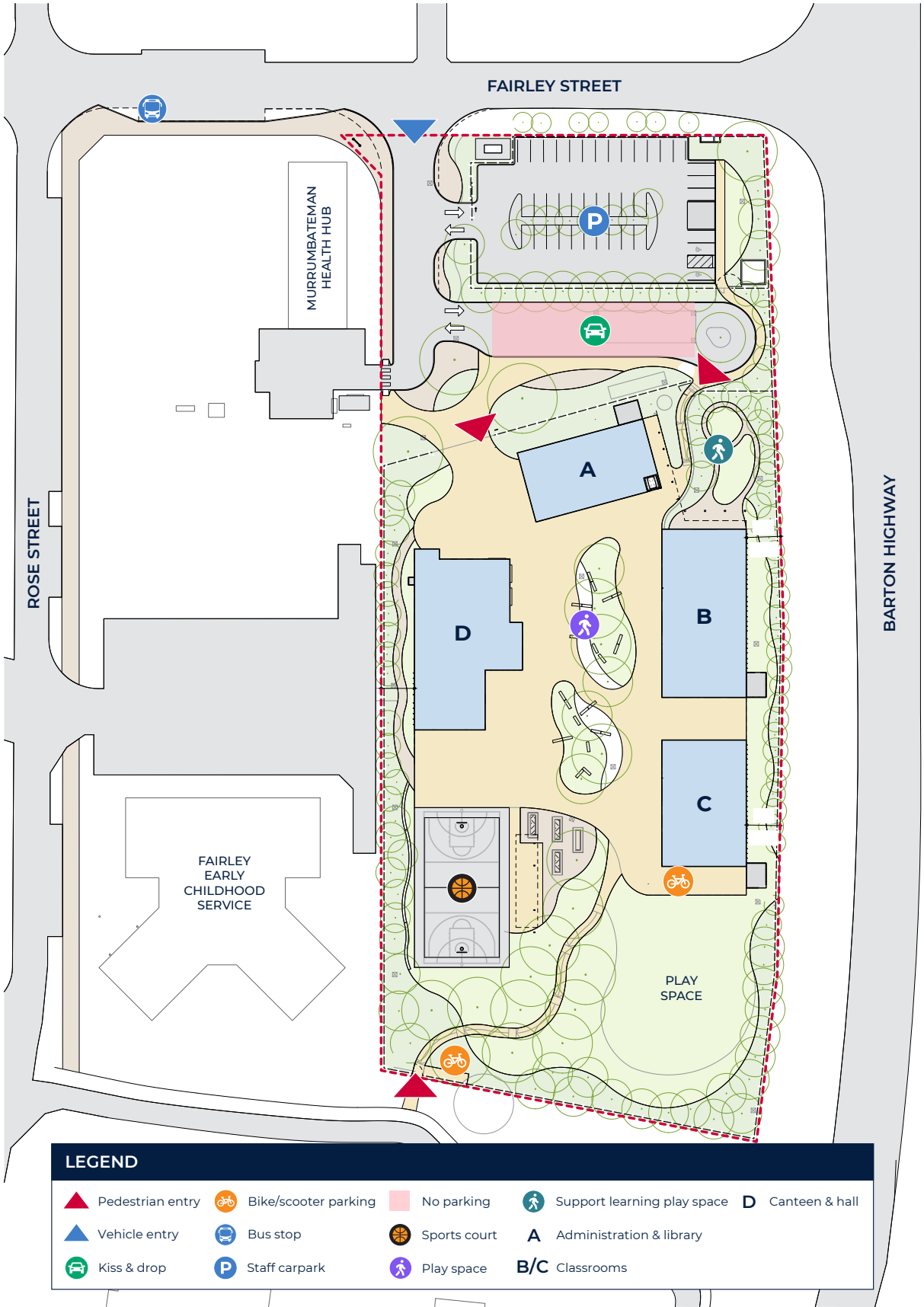
The 'kiss and drop' zone is at the front of the school on Fairley Street. For pick up, students will gather in the fenced off area at the front of B Block with a staff member. Staff will guide students to their vehicle when it is their turn to be picked up.

All vehicles must use the 'kiss and drop' zone to pick up and drop off students. This zone operates as a no parking zone, which means you may stop to drop off or pick up children for a maximum of two minutes.

## Parking

The front parking lot on Fairley Street is staff parking only. Parking is available on Rose Street, adjacent to the school.

# Site map







Artist impression, support learning classrooms playground, Murrumbateman Public School

## Frequently asked questions

### Will I be able to visit the school before it opens?

Please follow Murrumbateman Public School on [Facebook](#), follow our social media posts on our [website](#), or contact the school by email at [murrumbateman-p.school@det.nsw.edu.au](mailto:murrumbateman-p.school@det.nsw.edu.au).

### Will there be Out of Hours School Care (OHSC) available?

Yes, Big Childcare will provide Out of Hours school care. Please check the school's website [murrumbateman-p.schools.nsw.gov.au](http://murrumbateman-p.schools.nsw.gov.au) for updates and contact details as they become available.

## Contact us

For more information about this project, contact School Infrastructure NSW:

**Website:** [schoolinfrastructure.nsw.gov.au](http://schoolinfrastructure.nsw.gov.au)

**Email:** [schoolinfrastructure@det.nsw.edu.au](mailto:schoolinfrastructure@det.nsw.edu.au)

**Phone:** 1300 482 651

For information about school activities and operations, contact the school directly:

**Principal:** Liz Beasley

**Website:** [murrumbateman-p.schools.nsw.gov.au](http://murrumbateman-p.schools.nsw.gov.au)

**Email:** [murrumbateman-p.school@det.nsw.edu.au](mailto:murrumbateman-p.school@det.nsw.edu.au)

**Address:** 2 Fairley Street, Murrumbateman 2582 NSW