

New high school in Jerrabomberra

Information pack | November 2021



Artist impression of the new high school in Jerrabomberra
Indicative only and subject to change.

The NSW Government is investing \$7.9 billion over the next four years, continuing its program to deliver 215 new and upgraded schools to support communities across NSW. This is the largest investment in public education infrastructure in the history of NSW.

The NSW Department of Education is committed to delivering new and upgraded schools for communities across NSW. The delivery of these important projects is essential to the future learning needs of our students and supports growth in the local economy.

The new high school will have modern facilities to accommodate approximately 500 students and will include:



Library



Multi-purpose
hall



Canteen



Sports
courts



Covered outdoor
learning area (COLA)



Outdoor
space



Administration
facilities

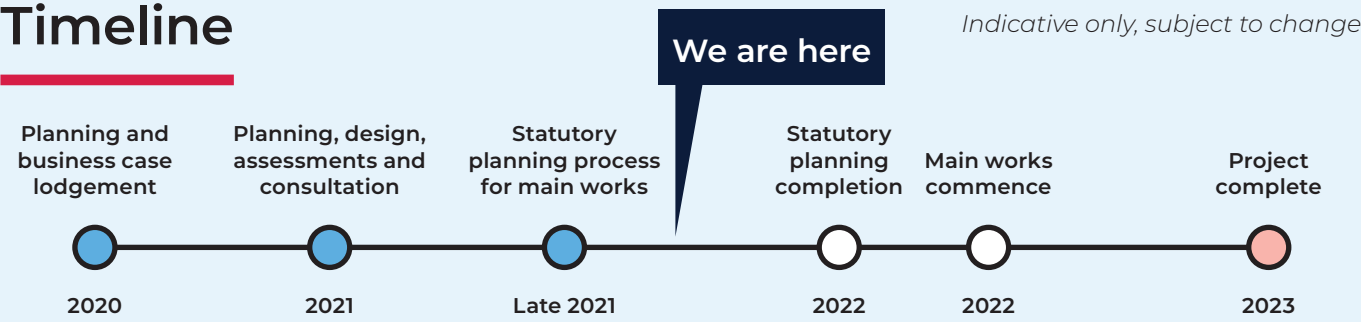
Project overview

Planning is underway for the establishment of a new high school in Jerrabomberra to accommodate approximately 500 students.

The new high school will have modern facilities with 25 flexible learning spaces including 3 support learning spaces, library, multi-purpose hall, sports courts, covered outdoor learning area (COLA), outdoor space, canteen, and administration facilities.

Learning spaces will be built to enable teaching of subjects offered by secondary schools to enable students to receive their Record of School Achievement or Higher School Certificate. The school will also offer vocational education and training (VET) programs.

Timeline



Site map



Site map is indicative only and subject to change

Image gallery

Artist impressions of the new high school in Jerrabomberra. All are indicative only and subject to change.

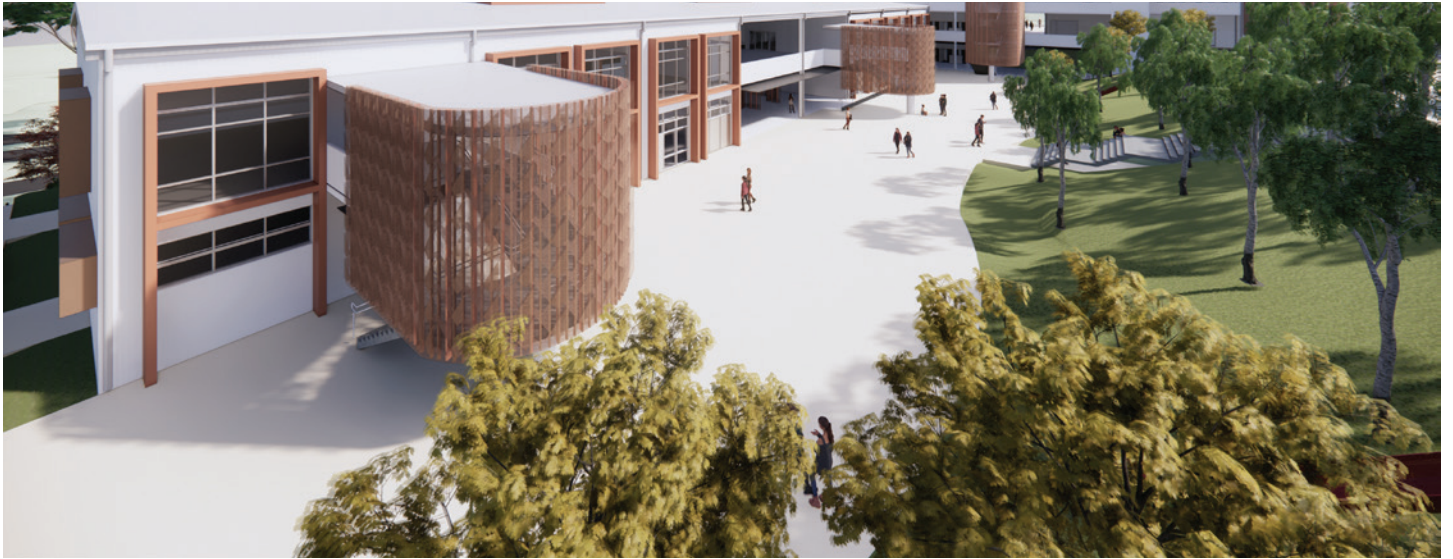


The main school entry from an elevated view above the Educational Trail



Looking along the bus bay with learning spaces on the right

Image gallery



View of the lower playground. All terraced outdoor spaces are connected by flights of stairs and ramps ensuring an inclusive and accessible learning environment for all students and staff.



Looking from an elevated view above the quadrangle to learning spaces and the school administration. The covered outdoor learning space (COLA) is on the right.



View across the main school entry with the school administration on the left and the library on the right.

Frequently asked questions

What happens next?

A State Significant Development application has been lodged for the project, and will be on exhibition for 28 days, from Friday 12 November 2021 to Thursday 9 December 2021.

When the project is placed on public exhibition, the community and other stakeholders can formally provide comments.

What is a State Significant Development (SSD) application?

SSD applications are used for projects that have special significance to the people and State of NSW. The Department of Planning, Industry and Environment (DPIE) is responsible for the planning approval process for SSD application, rather than a local council.

How can I find out more about the SSD application?

You can find detailed information about the SSD application by going to the DPIE's website: www.planningportal.nsw.gov.au/major-projects

How can I provide feedback on the SSD application?

If you would like to provide feedback, make a formal submission during the exhibition period by following the 'Make a Submission' link at: www.planningportal.nsw.gov.au/major-projects/project/42416

All feedback on the SSD application should be directed to DPIE via this link.

Are these latest artist impressions subject to change?

The renders on display right now for the new high school in Jerrabomberra are the final designs being submitted for approval.

Whilst some changes may be required pending the outcome of the SSD application, the overall design will remain consistent.

How many students will the high school accommodate?

The new school will accommodate approximately 500 students when it is completed in 2023, subject to planning approval.

What is the catchment area for the new high school?

The school catchment will be confirmed closer to the school opening and will be based on the most up to date demographic data on the number of school aged children living in the local area at the time the school opens. We will share more details about this and how to enrol as the project progresses.

When will the school open?

The new high school is scheduled to be completed in 2023, subject to planning approval.

How will students get to the new high school?

We identify and review transport impacts early in the planning process and collaborate with state, local and school stakeholders to put appropriate traffic solutions in place.

A transport assessment has been undertaken to identify the challenges and opportunities associated with student travel to the school location, and a report is included as part of the SSD submission.

The project will include drop off and pick up facilities.

Online information session

An online information session will be live from 9 am Wednesday 24 November to 5pm Tuesday 30 November 2021. Here, you will find information about the project, including the design and site layout.

You can access the session from the project webpage: www.schoolinfrastructure.nsw.gov.au/projects/n/new-high-school-in-jerrabomberra.html

Contact us

For more information about this project contact School Infrastructure NSW:

School Infrastructure NSW
Email: schoolinfrastructure@det.nsw.edu.au
Phone: 1300 482 651
www.schoolinfrastructure.nsw.gov.au