



An example of a completed highschool learning space

A new high school in Jerrabomberra

Project update

March 2021

Investing in our schools

The NSW Government is investing \$7 billion over the next four years, continuing its program to deliver more than 200 new and upgraded schools to support communities across NSW. This is the largest investment in public education infrastructure in the history of NSW.

The NSW Department of Education is committed to delivering new and upgraded schools for communities across NSW. The delivery of these important projects is essential to the future learning needs of our students and supports growth in the local economy.

Project overview

We are currently undertaking planning work to deliver a new high school in Jerrabomberra. This includes development of a master plan and concept design.

To develop a concept design, we need to understand the spatial requirements for a school and assess the needs of the Jerrabomberra school community.

In addition to innovative teaching and learning spaces, the new school will also include:

- covered outdoor learning area
- library
- green space
- administrative facilities

Progress summary and next steps

A very early contractor involvement (VECI) tender has been awarded to Hindmarsh Construction Australia. This approach enables the contractor to be part of the design process from a very early stage, resulting in an in-depth understanding of the complexities of the build, well before construction. This enables works to be undertaken more efficiently and with a greater level of construction planning.

We will soon lodge a request for the Secretary's Environmental Assessment Requirements (SEARs), which is a key step in the planning process. The SEARs advise the studies that need to be included as part of the State Significant Development application.

Work is also underway to engage a consultant to conduct a Social Impact Assessment (SIA). As part of the SIA, community and stakeholder consultation on the proposal will take place over the coming months.

When the project is placed on public exhibition, the community and stakeholders can formally provide comments. Construction work can start onsite after the development application is approved and the main construction contract is awarded.

How can I get involved?

We are committed to working together with our school communities and other stakeholders to deliver the best possible learning facilities for students. Your feedback on this project is important to us.

For more information contact:

School Infrastructure NSW
Email: schoolinfrastructure@det.nsw.edu.au
Phone: 1300 482 651
www.schoolinfrastructure.nsw.gov.au

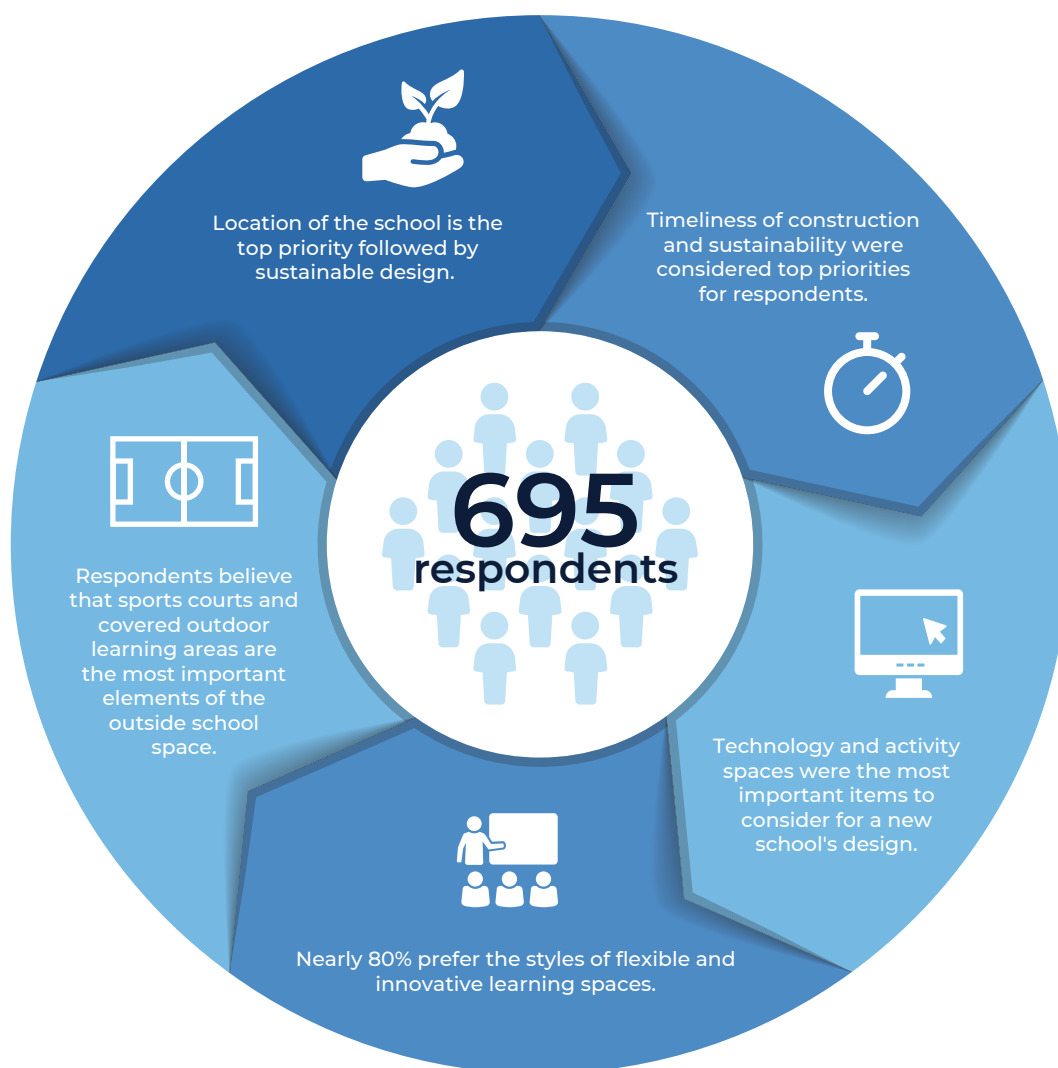
Here's a summary of what you told us in November

In November 2020, School Infrastructure NSW (SINSW) engaged with the local community to share feedback on the proposal at information sessions and through a survey.

Thank you to the 695 people who completed the survey.

See below a summary of what you told us.

Please stay up to date through school newsletters and the School Infrastructure NSW website.



93%

of respondents believe the new education campus will benefit the local community.

For more information contact:

School Infrastructure NSW
Email: schoolinfrastructure@det.nsw.edu.au
Phone: 1300 482 651
www.schoolinfrastructure.nsw.gov.au