

New high school in Jerrabomberra

Project update

November 2020

Process timeline



Delivering a new high school in Jerrabomberra

We are currently undertaking planning work to deliver a new high school in Jerrabomberra. This includes development of a master plan and concept design.

To develop a concept design we need to understand the spatial requirements for a school and assess the needs of the Jerrabomberra school community.

In addition to innovative teaching and learning spaces, a new school may also include:

- covered outdoor learning area
- library
- green space
- administrative facilities.

Progress summary

We are in the master planning phase and are currently assessing the spatial and community requirements for the school.

Have your say and take our survey

We have developed a series of questions that relate to this part of the planning phase.

Share with us what's important to you. The survey will be open for feedback **from 11 November 2020 to 9 December 2020**.

Your feedback will be considered as we undertake our planning.



Please visit the project page on the School Infrastructure NSW website at www.schoolinfrastructure.nsw.gov.au/projects/n/new-high-school-in-jerrabomberra.html or click on the QR code to fill out the survey.

Visit us at the Community Information Hub and complete our survey

We invite you to register your attendance for a drop-in Community Information Hub session where you can find out more about the school and learn about the building process. Registration is required to ensure current social distancing measures are followed. The Community Information Hub will be open during select times on the following days at the corner of Wilkins Way, Aprasia Avenue and Gorman Drive Googong:

Wednesday 11 November

8:30am to 11:30am and 1:30pm to 4:30pm

Thursday 12 November

8:30am to 11:30am and 1:30pm to 4:30pm

Sunday 15 November

10:00am to 2:00pm



To book in a session please scan the QR code below or go to www.eventbrite.com/e/community-information-hub-new-schools-in-googong-jerrabomberra-monaro-tickets-126906756525

How can I get involved?

We are committed to working together with our school communities and other stakeholders to deliver the best possible learning facilities for students.

Your feedback on this project is important to us. For more information, questions or to make a comment please email us at schoolinfrastructure@det.nsw.edu.au.

How we will keep you informed

Until further notice we will share information with our communities online instead of in person.

Our information hotline and email address will continue to operate as normal.

New high school in Jerrabomberra

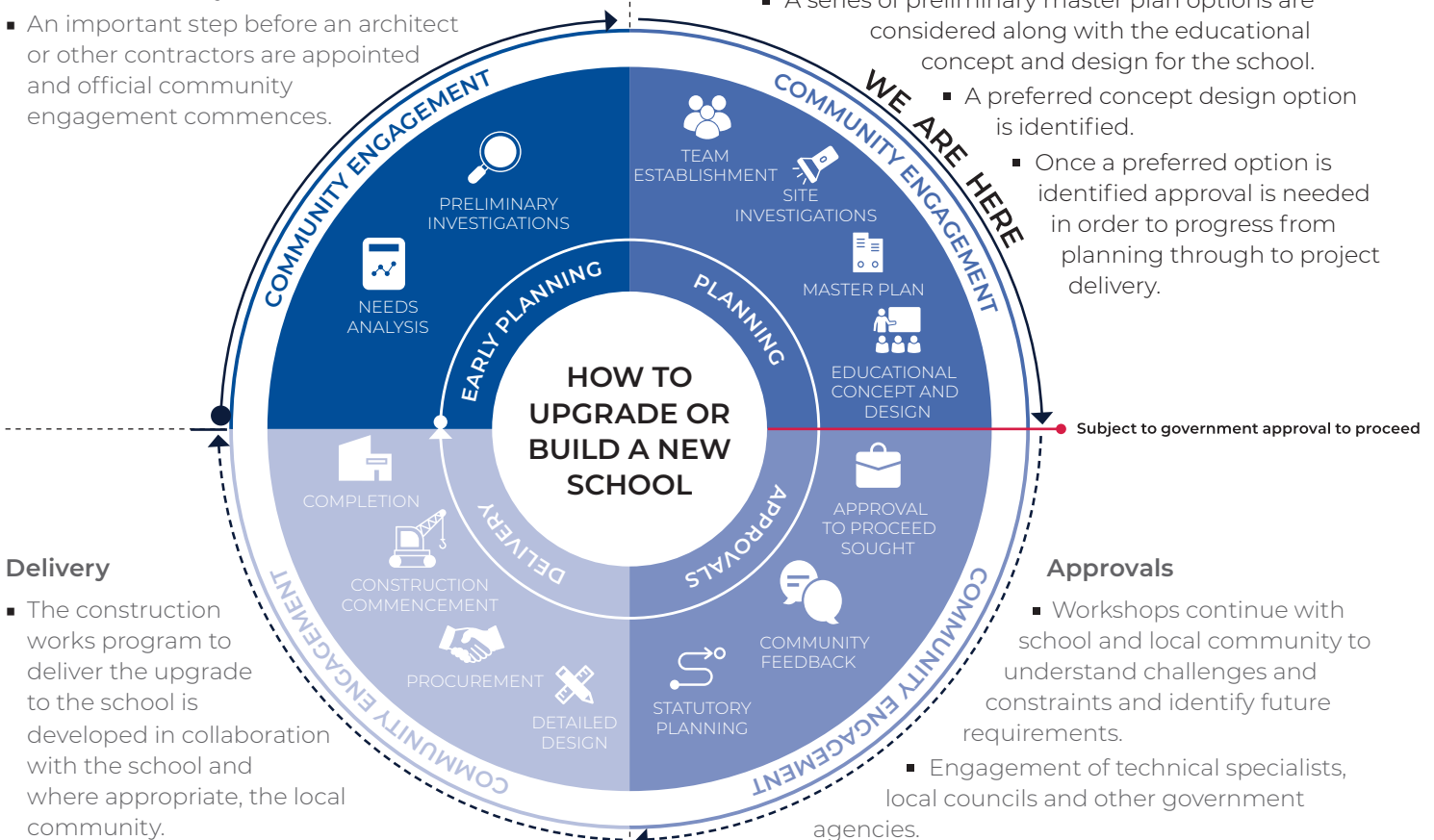
Funding has been allocated for a new high school in Jerrabomberra. The information below takes you through the journey of upgrading or building a new school.

Early planning

- Consideration and studies of demographic trends, education requirements, the condition of the existing school buildings, catchment boundaries, heritage requirements, transport links and partnership opportunities.
- Doing so means that we:
 - consider the needs of the local area now and into the future.
 - ensure the right school is designed for the community.
- An important step before an architect or other contractors are appointed and official community engagement commences.

Planning

- Consultants such as architects and project managers are appointed.
- Investigation and review of site and development of master plan options.
- Master planning considers options for the general size, shape and form of buildings for a specific school site.
- A Project Reference Group (PRG) is established.
- Operational, educational and service delivery factors are understood and considered by the PRG.
 - A series of preliminary master plan options are considered along with the educational concept and design for the school.
 - A preferred concept design option is identified.
 - Once a preferred option is identified approval is needed in order to progress from planning through to project delivery.



Delivery

- The construction works program to deliver the upgrade to the school is developed in collaboration with the school and where appropriate, the local community.
- Ongoing consultation with Principal, staff and other school users.
- Throughout detailed design and construction updates are provided to the local community.

Approvals

- Workshops continue with school and local community to understand challenges and constraints and identify future requirements.
 - Engagement of technical specialists, local councils and other government agencies.
- Statutory planning approval process.
- Opportunity for local community to view and provide feedback upon submission of the Development Application.
- Scope of work and concept design is further defined.

For more information contact:

School Infrastructure NSW
 Email: schoolinfrastructure@det.nsw.edu.au
 Phone: 1300 482 651
www.schoolinfrastructure.nsw.gov.au