



Jerrabomberra High School

Project update | June 2023

Project overview

Jerrabomberra High School opened on Day 1 Term 1 2023 in purpose built temporary facilities located at Jerrabomberra Public School. Construction of the new permanent high school is underway. It will have modern facilities, with 24 flexible learning spaces including 3 support learning spaces, to accommodate approximately 500 students. It will deliver a library, multi-purpose hall, canteen, sports courts, covered outdoor learning area (COLA), outdoor space and administration facilities.

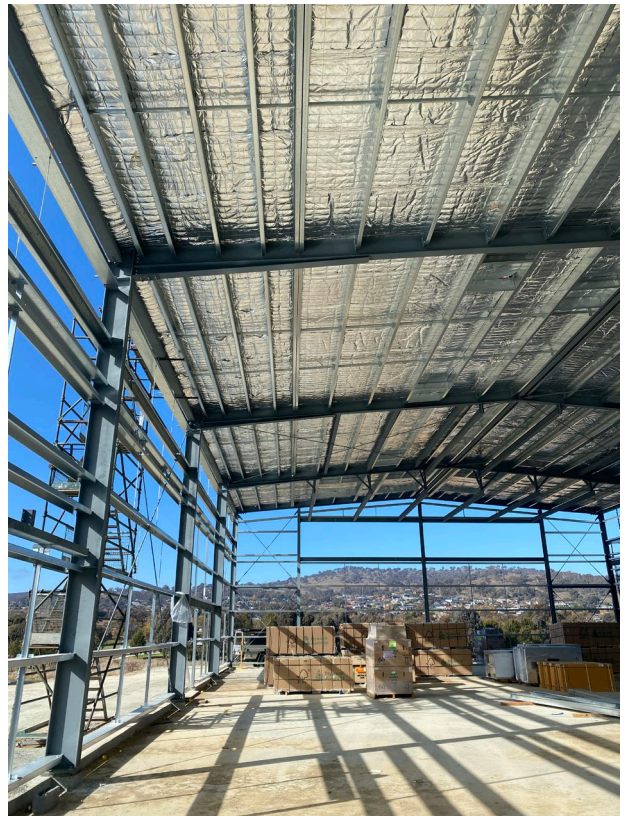
Progress update

The design changes to incorporate an additional science laboratory have been approved by the Department of Planning and Environment (DPE) as a modification to the State Significant Development Application.

To fit the additional science laboratory within the existing building footprint the total number of General Learning Spaces (GLS) has been reduced from 25 to 24. The original layout, which can be seen in Project Update – February 2023, had one science laboratory and two science GLS. The modified design, which can be seen in Project Update – May 2023, has two science laboratories and one science GLS. The total number of teaching spaces remain the same. The design change has been endorsed by school leadership as it facilitates the delivery of the science curriculum.

Thank you to everyone who expressed interest in access to bus services to travel to the permanent school site. We have shared the expression of interest with Transport for NSW who will use this information in planning bus routes.

Works are well progressed on site, and most of the roofing has now been installed. including on Block C, pictured at right, which will be the canteen and multipurpose hall.



A timelapse video of the construction of the new school from February to May 2023 can now be seen on the project webpage at <https://www.schoolinfrastructure.nsw.gov.au/projects/n/new-high-school-in-jerrabomberra.html>



View from classrooms in Block A, looking out over Environa Drive.



Inside Block B, in the space that will be the school library.

Next steps

Work will continue on the roofing and external cladding of the buildings, and the windows will be fitted. Work will then begin on the internal fit out. We look forward to continuing to share information with you as the project progresses.

