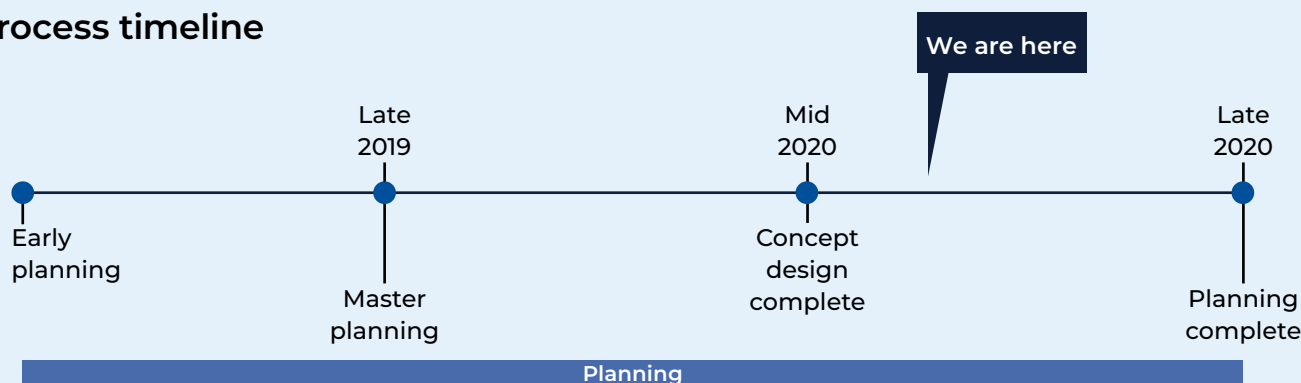


# Neutral Bay Public School Upgrade

Planning update

May 2020

## Process timeline



### Planning for an upgrade at Neutral Bay Public School

We are currently undertaking planning for an upgrade at Neutral Bay Public School. This includes development of a master plan and concept design.

To develop a concept design, we need to understand the spatial requirements for a school and how it might fit within the Neutral Bay community.

In addition to innovative teaching and learning spaces, an upgrade to the school may also include:

- covered outdoor learning area
- library
- green space
- administrative facilities.

Once the concept design is developed it will go through an approval process to proceed.

### Progress summary

We are in concept design phase and are currently assessing the spatial and community requirements for the school.

### Have your say and take our survey

We have developed a series of questions that relate to this part of the planning phase.

Share with us what's important to you. The survey will be open for feedback from **7:00am on 29 May until 19 June 2020**.

Your feedback will be considered as we undertake our planning.



Please visit the project page on the School Infrastructure NSW website at <https://www.schoolinfrastructure.nsw.gov.au/projects/n/Neutral-Bay-Public-School-upgrade.html> or click on the QR code to fill out the survey.

### How can I get involved?

We are committed to working together with our school communities and other stakeholders to deliver the best possible learning facilities for students.

Your feedback on this project is important to us. For more information, questions or to make a comment please email us at [schoolinfrastructure@det.nsw.edu.au](mailto:schoolinfrastructure@det.nsw.edu.au)

### Changing the way we communicate

The health and safety of our students, staff and community is our priority.

We are temporarily changing some of the ways we keep you informed about our project in your community to account for social distancing measures.

### How we will keep you informed

Until further notice we will share information with our communities online instead of in person.

Our information hotline and email address will continue to operate as normal.

### Keep in touch

The SINSW website will continue to have up-to-date information about the project in your area. You can also continue to contact us via our community information line and email on the details below.

### For more information contact:

School Infrastructure NSW  
Email: [schoolinfrastructure@det.nsw.edu.au](mailto:schoolinfrastructure@det.nsw.edu.au)  
Phone: 1300 482 651  
[www.schoolinfrastructure.nsw.gov.au](http://www.schoolinfrastructure.nsw.gov.au)

## Neutral Bay Public School Upgrade

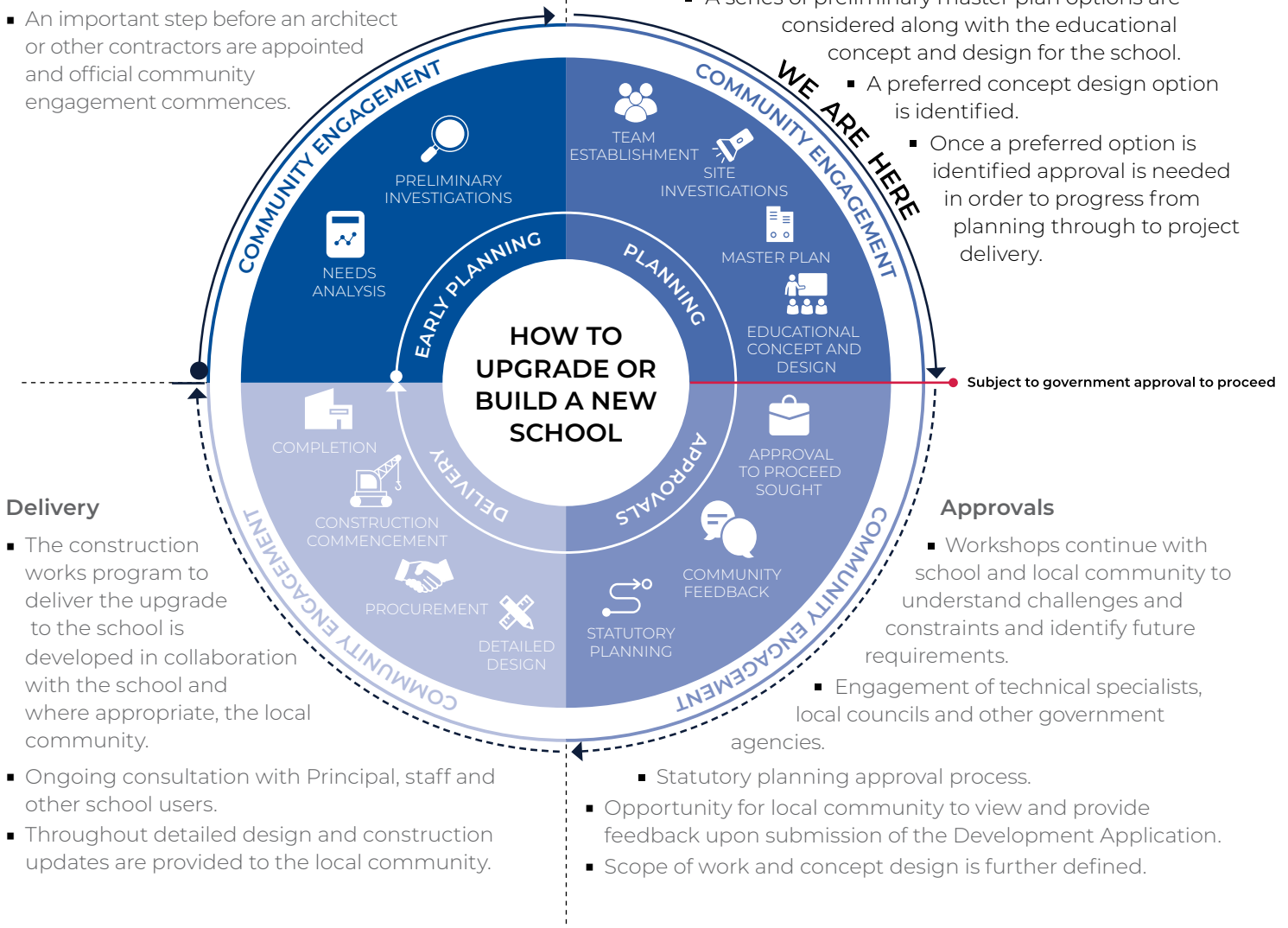
Planning funding has been allocated for an upgrade at Neutral Bay Public School. The information below takes you through the journey of upgrading or building a new school.

### Early planning

- Consideration and studies of demographic trends, education requirements, the condition of the existing school buildings, catchment boundaries, heritage requirements, transport links and partnership opportunities.
- Doing so means that we:
  - consider the needs of the local area now and into the future.
  - ensure the right school is designed for the community.
- An important step before an architect or other contractors are appointed and official community engagement commences.

### Planning

- Consultants such as architects and project managers are appointed.
- Investigation and review of site and development of master plan options.
- Master planning considers options for the general size, shape and form of buildings for a specific school site.
- A Project Reference Group (PRG) is established.
- Operational, educational and service delivery factors are understood and considered by the PRG.
  - A series of preliminary master plan options are considered along with the educational concept and design for the school.
  - A preferred concept design option is identified.
  - Once a preferred option is identified approval is needed in order to progress from planning through to project delivery.



### Delivery

- The construction works program to deliver the upgrade to the school is developed in collaboration with the school and where appropriate, the local community.
- Ongoing consultation with Principal, staff and other school users.
- Throughout detailed design and construction updates are provided to the local community.

### Approvals

- Workshops continue with school and local community to understand challenges and constraints and identify future requirements.
  - Engagement of technical specialists, local councils and other government agencies.
- Statutory planning approval process.
  - Opportunity for local community to view and provide feedback upon submission of the Development Application.
  - Scope of work and concept design is further defined.