

Neutral Bay Public School

Welcome Pack – February 2025



Our new Neutral Bay Public School entry

Welcome to your upgraded school

We are excited the upgraded Neutral Bay Public School is complete and ready for students and staff to use. The new facilities include:



7 modern classrooms and 12 refurbished classrooms



a library



reception and administration area



canteen



upgraded sports court and play area



improved landscaping

Thank you for your patience during construction.

We are thrilled to deliver this project for the school community.

For more information

Phone: 1300 482 651

Email: schoolinfrastructure@det.nsw.edu.au

Website: schoolinfrastructure.nsw.gov.au





Our new library

Message from your relieving Principal

It is with great excitement that I welcome you to our newly upgraded school. It is an important milestone in our school's journey, and I am delighted to share with you the remarkable changes that will enhance the learning and community experience.

The new upgrades include 7 state-of-the-art classrooms designed to foster collaboration and creativity. These spaces have been thoughtfully designed to accommodate diverse learning needs and provide a flexible environment where our students can thrive. Our new library is a place where imagination and knowledge will flourish, offering a wide range of resources for our students to explore and engage with.

I am proud to have a new canteen and an updated school reception and administration area too. Our school upgrades were carefully planned with the environment in mind with energy-efficient designs. We are also dedicated to fostering inclusivity, ensuring that the new spaces are accessible to all members of our community.

As part of our deep respect for the land and culture, Aboriginal design elements have been thoughtfully integrated into the new building. These elements honour the traditional owners of this land, the Cammeraygal clan, and serve as a reminder of our shared responsibility to celebrate Aboriginal culture at our school.

I would also like to acknowledge former Principal, Judy Goodsell, and her key role in guiding and progressing this incredible upgrade. I extend that gratitude to our dedicated executive team and our broader staff, students, families, and the wider community for their support during this exciting transformation. I invite you all to visit our new spaces and experience first-hand the positive changes that will benefit our entire school community.

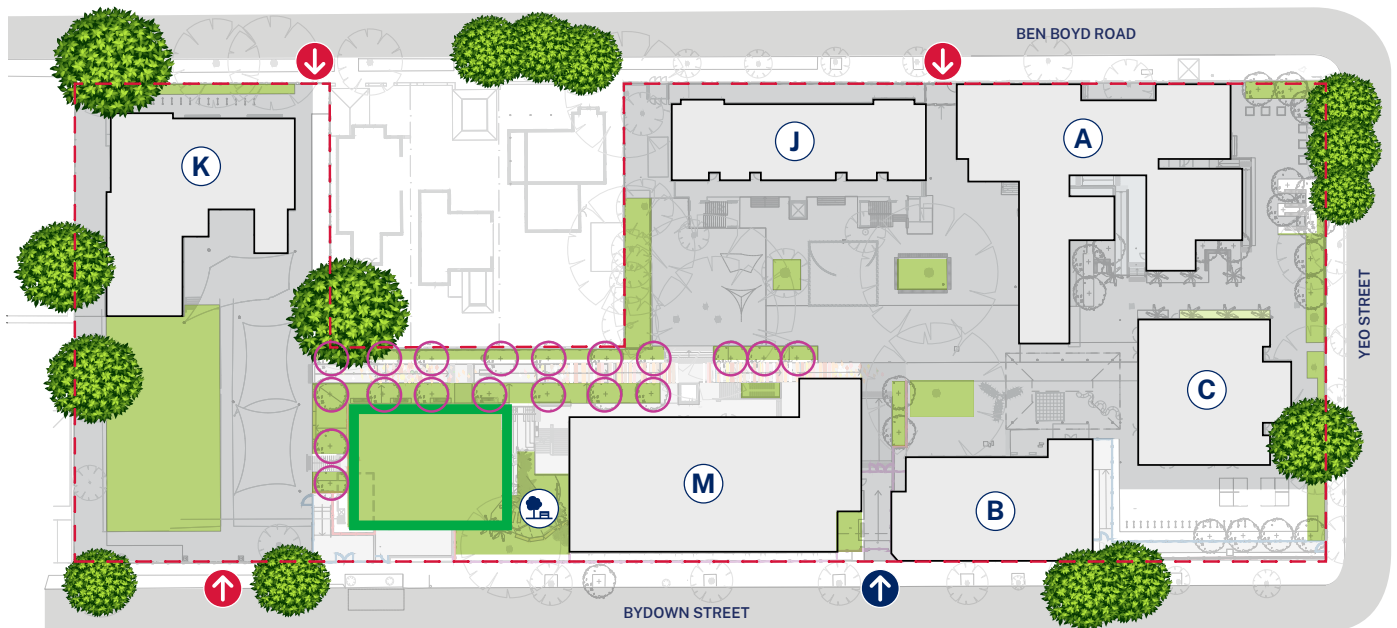
Warm regards

Joann Sayers

R/Principal

Neutral Bay Public School

Site map



LEGEND

- | | | | | |
|---------------|--------------------|-------------------|-----------------------------|---|
| Buildings | New school entry | Updated play area | Improvements to landscaping | Refurbished classrooms, updated OOSH facilities |
| Site boundary | School access only | New trees planted | Refurbished classrooms | Canteen, administration, 7 new classrooms |

Did you know?



The new building boasts a 5-star sustainable rating, emphasising eco-friendly practices.



The site of the school holds significant historical and cultural importance, lying within the traditional lands of the Cammeraygal clan. The sandstone-coloured façade was developed through consultation with Uncle Dennis Foley, an elder in the local community. The colour was inspired by the sandstone outcrops, aquifers, and caves found in the surrounding North Shore of Sydney, creating a deep cultural link between the school and the landscape.



Classroom



Multipurpose room



Library



Improved landscaping

Contact us

For information about school activities and operations, contact the school directly:

R/Principal: Joann Sayers

Website: neutralbay-p.schools.nsw.gov.au

Email: neutralbay-p.school@det.nsw.edu.au

Phone: 02 9953 1798

Address: 175 Ben Boyd Road, Neutral Bay NSW 2089

For more information about this project, contact School Infrastructure:

Website: schoolinfrastructure.nsw.gov.au

Email: schoolinfrastructure@det.nsw.edu.au

Phone: 1300 482 651

Building better schools

We are continuously improving the way we build schools.

Later this year we will share a survey link about the school upgrade.

Your feedback, ideas and suggestions will help inform the way we plan, design and build future schools so that they best support high quality teaching and learning.

