

Neutral Bay Public School

Summer holidays works notification | December 2023

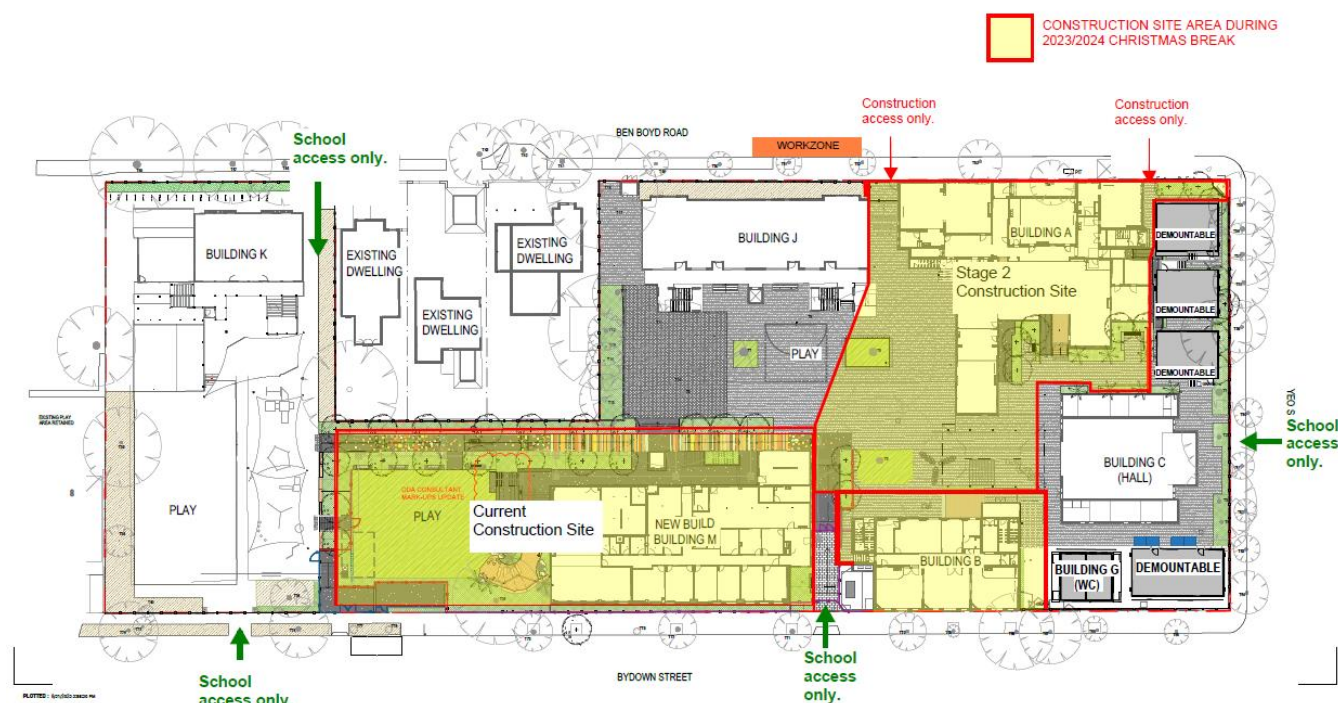
Changes to construction site and access to school

As we get close to completing the refurbishment of Building B and starting the refurbishment of Building A, access to parts of the school will begin to change.

During 2024 summer holidays

Work to Buildings A and B will overlap for a short time during the summer holidays. There will be no access to the main campus of the school during the summer holidays, as shown in Map 1.

Map 1



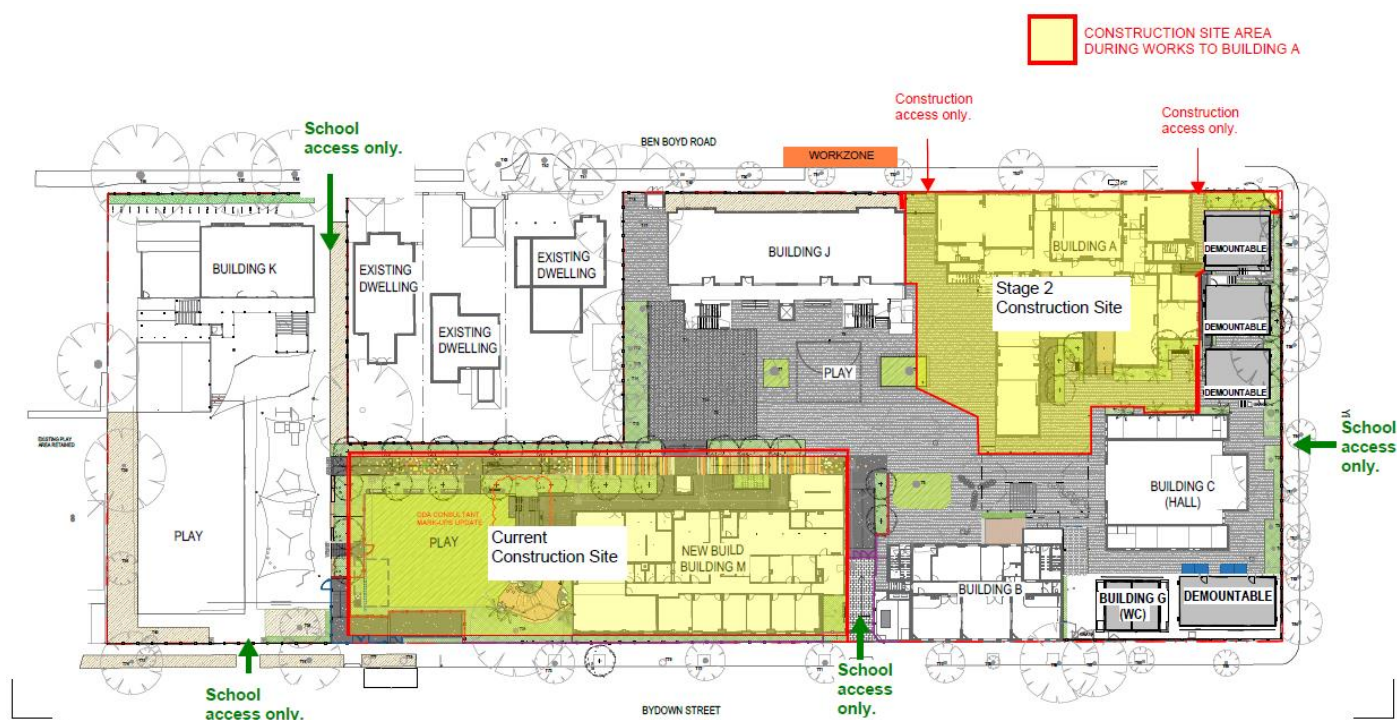
From Day 1 Term 1 2024

The hoarding around Building B will be removed. Hoarding for Building A will also be pulled back to provide some access to the main play area. Access to the school will be from the following locations:

- Ben Boyd Road at Kindyland.
- Yeo Street at Building C.
- Bydown Street at Kindyland and Building B.

Map 2 overleaf shows the construction areas and school access points from Day 1 Term 1 2024. These arrangements will be in place until late 2024.

Map 2



Construction activities during the summer holiday period

Final refurbishment works to Building B will be completed. The refurbishment of Building A will start. Activities will include:

- Installation of fencing and hoarding.
- Locations and isolation of existing services.
- Internal strip-out.

Construction hours during the summer holiday period

The site will be closed between 22 December 2023 and 2 January 2024. Construction will restart from 3 January 2024 and take place within the approved construction hours of 7 am to 5 pm Monday to Friday, and 8 am to 1 pm on Saturdays. No work will take place on Sundays or public holidays, unless otherwise advised.

The School Infrastructure NSW office will be closed from 5pm Friday 22 December 2023 to 9 am Monday 8 January 2024, inclusive. You can continue to contact us during this time, and we will get back to you after we return. If there is an urgent issue, please contact the site manager listed on the construction site entry. In an emergency, please call triple zero (000).

More information

For more information, visit the project website at edu.nsw.link/NeutralBayPS or contact School Infrastructure NSW on 1300 482 651 or schoolinfrastructure@det.nsw.edu.au.