








Project overview

The Neutral Bay Public School upgrade will deliver fit-for-purpose learning spaces and upgraded core facilities

Benefits:

| | | |
|--|--|---|
|  7 new flexible learning spaces |  12 refurbished learning spaces |  Upgraded library |
|  Refurbished heritage buildings A & B |  Upgraded canteen | |
|  Upgraded staff administration areas |  Upgraded out of school hours facilities | |



Artist impression of the Neutral Bay Public School upgrade. Indicative only.

Neutral Bay Public School

Flexible learning spaces

Contemporary learning and teaching prepares students for a diverse and interconnected world. We are evolving the ways we teach our students new skills valued by a changing workforce, understand different ways students learn and support new ways of interacting with information through technology.

Flexible learning spaces are designed and equipped to support contemporary learning and teaching.

What makes a flexible learning space?



Learning space

- Different zones (areas of a building or floors) are designed to support a range of activities sometimes grouped by subject area
- Varied furniture allows for student choice, comfort and flexibility
- Spaces are flexibly connected allowing students to work in varied group sizes
- Connection between indoor and outdoor learning spaces



Organisation

- Movement is encouraged for students and teachers to collaborate and interact
- More than one teacher may be available to students within the learning environment
- Students learn in classes, small groups or individually



Teaching and learning

- Learning is personalised
- Learning is connected across different subject areas
- There is a focus on creativity and innovation with students prototyping, testing and using technology in creative ways



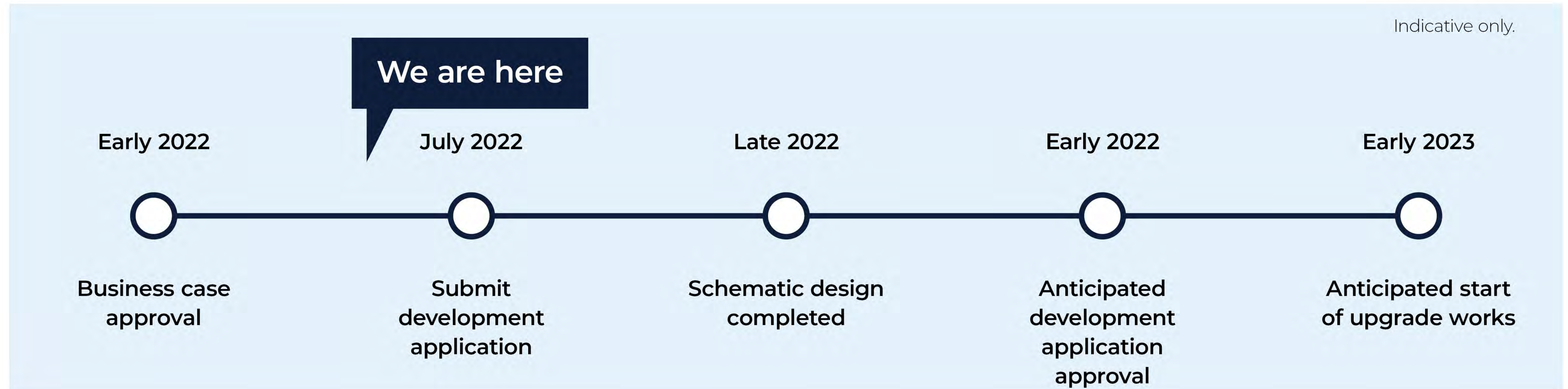
Technology

- Technology is integrated into spaces to extend learning opportunities
- WiFi is available everywhere including outdoors
- Specialist equipment is available for students to innovate, communicate and create

Neutral Bay Public School

For more information phone: 1300 482 651
Email: schoolinfrastructure@det.nsw.edu.au

Timeline



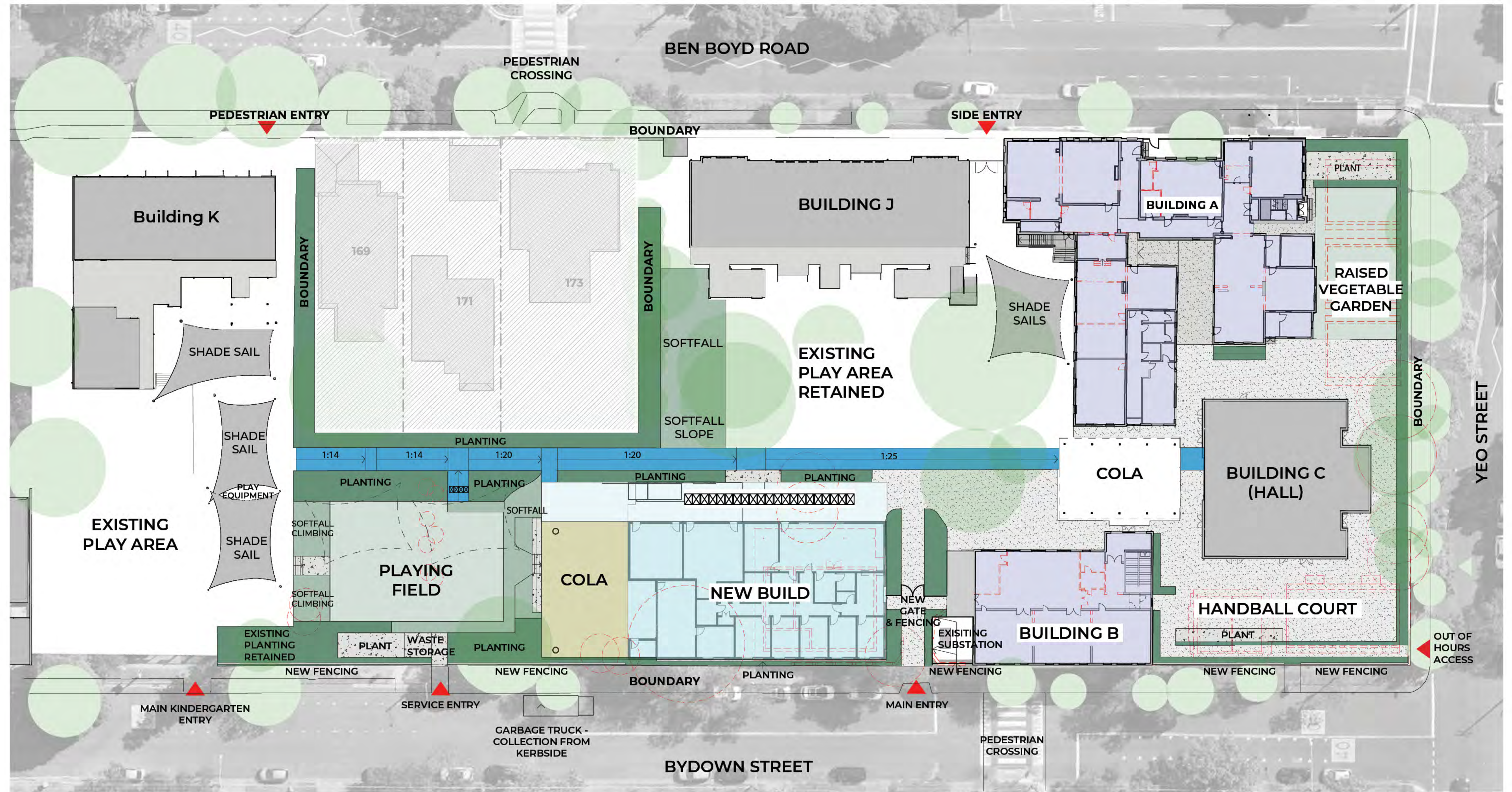
What's next?

We will continue to work with key stakeholders to deliver high quality education infrastructure for the school community. The project's Development Application will be on public exhibition shortly and the community is encouraged to provide feedback to North Sydney Council. We will notify parents, carers and the local community when the application is open on the Council's website.

We look forward to sharing more information with you as the project progresses. In the meantime, you can stay informed by regularly visiting <https://www.schoolinfrastructure.nsw.gov.au/projects/n/Neutral-Bay-Public-School-upgrade.html>.

You can contact us via email or phone if you have any questions or feedback about the upgrade of the school.

Site plan



LEGEND

- DEMOLITION
- EXISTING
- REFURBISHMENT
- NEW BUILD
- LANDSCAPE
- EXISTING TREE
- TREE TO BE REMOVED

Neutral Bay Public School

For more information phone: 1300 482 651
 Email: schoolinfrastructure@det.nsw.edu.au



Artist impressions of the upgrade work for Neutral Bay Public School. Indicative only.

Neutral Bay Public School