

# Neutral Bay Public School

Information pack | June 2022



Artist impression of the Neutral Bay Public School upgrade. Indicative only.

The NSW Government is investing \$7.9 billion over the next four years, continuing its program to deliver 215 new and upgraded schools to support communities across NSW. This is the largest investment in public education infrastructure in the history of NSW.

The NSW Department of Education is committed to delivering new and upgraded schools for communities across NSW. The delivery of these important projects is essential to the future learning needs of our students and supports growth in the local economy.



7 new flexible learning spaces



12 refurbished learning spaces



Upgraded library



Refurbished heritage buildings A & B



Upgraded canteen



Upgraded staff administration areas

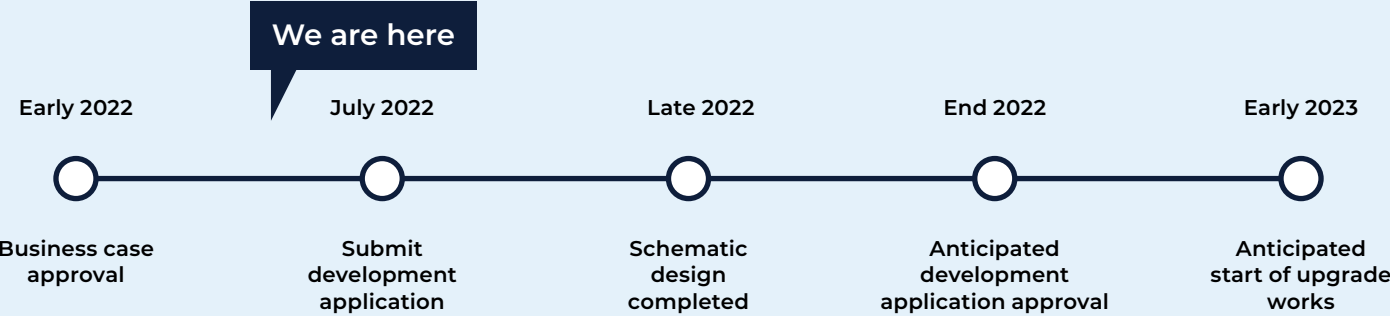


Upgraded out of school hours facilities

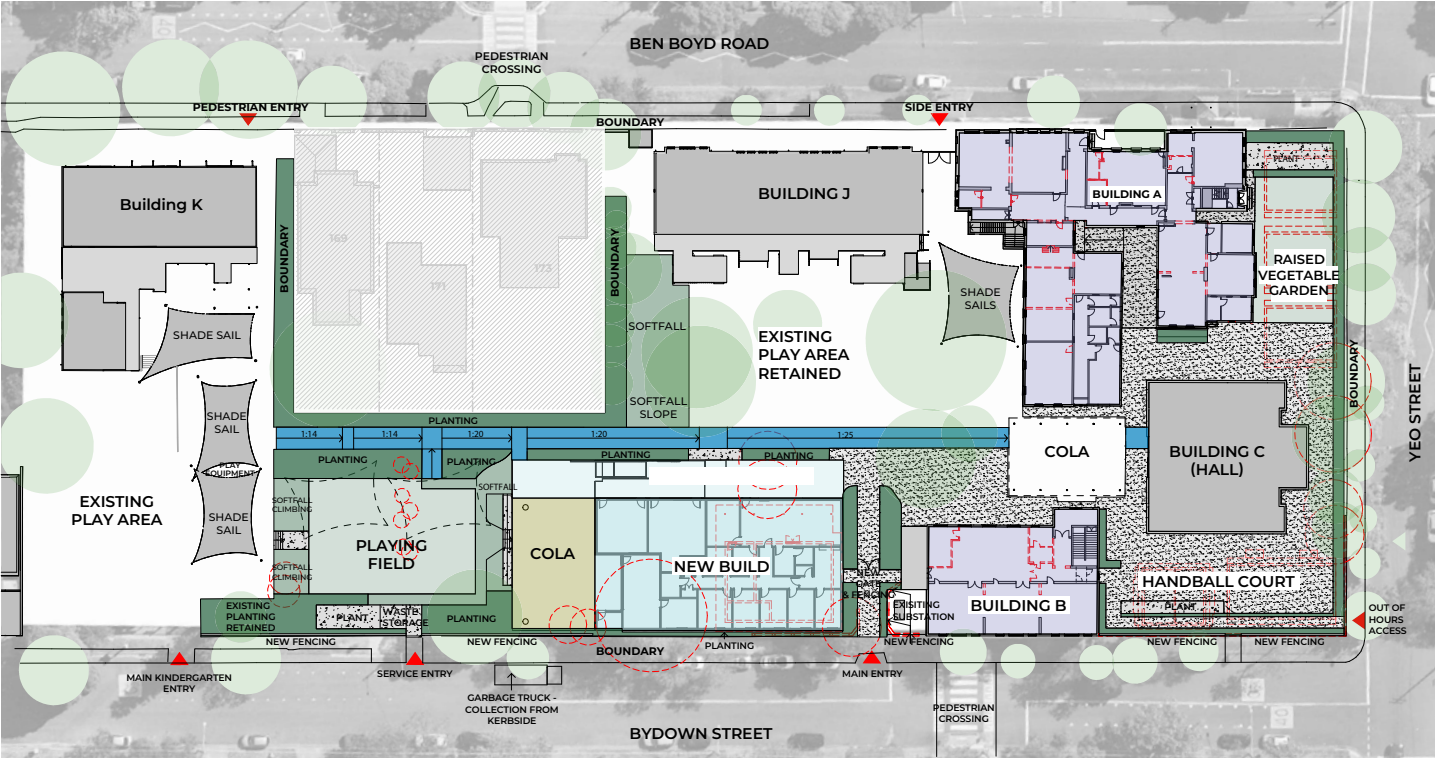
# Project overview

Neutral Bay Public School has been funded to receive 19 fit for purpose permanent flexible learning spaces including 7 new flexible learning spaces and refurbishment of 12 existing learning spaces. The project will also provide upgrades to the library, administration/staff areas, canteen, amenities and storage facilities and out of school hours care facilities.

## Indicative timeline



## Map of works



**LEGEND**

	DEMOLITION		EXISTING		REFURBISHMENT		NEW BUILD		LANDSCAPE		EXISTING TREE		TREE TO BE REMOVED
--	------------	--	----------	--	---------------	--	-----------	--	-----------	--	---------------	--	--------------------



Artist impressions of the upgrade of Neutral Bay Public School

# Frequently asked questions

## Are the artist impressions of the school's upgrade subject to change?

The artist impressions currently on display are based on the project's schematic designs. They will progress to detailed design after being approved by North Sydney Council. During this process, they may be altered to accommodate planning approval conditions.

Additionally, feedback received during the public exhibition of the development application will also be considered and where possible incorporated into the final design.

While some aspects of the design may change as we move through these processes, the overall approach to the upgrade is likely to remain the same.

## Will the upgrade of the school accommodate more students?

The planned upgrade works will replace the school's temporary learning spaces with permanent learning spaces to maintain the school's capacity of 900 students. When the upgrade is completed, the existing demountable classrooms will be removed.

## Will the upgrade works maintain the heritage features of the school?

Yes. We are working in close consultation with a Heritage Consultant to ensure the school's heritage features are maintained. The external finishes and light sandstone colour of the new building was chosen to reflect the features of the existing heritage buildings.

## Will any trees be removed to accommodate the new building?

A detailed landscape plan has been prepared to offset any loss of trees with new plantings.

## What happens next?

The project's Development Application will soon be lodged with North Sydney Council. Once lodged, the project will be placed on public exhibition via the Council's website.

## When is construction due to start?

Construction is anticipated to start in early 2023, pending approval of the project's Development Application.

## What temporary arrangements will be in place during construction?

To prepare for the upgrade to the school, we are working closely with the school's principal to ensure continuity of student learning. We will share further advice on any changes to school operations before construction starts.

### Community Information Sessions

A virtual information session will be available from 9 am Wednesday 22 June to 5 pm Sunday 26 June 2022.

The session includes a Contact Us form to provide feedback on the proposed upgrade.

You can access the session from <https://consultationspace.com/SINSW/NeutralBay/>.

Two information booths will also be held at the school from 2.30 pm to 3.30 pm Thursday 23 June and from 8 am to 9.30 am on Friday 24 June 2022.

### For more information contact:

School Infrastructure NSW  
Email: [schoolinfrastructure@det.nsw.edu.au](mailto:schoolinfrastructure@det.nsw.edu.au)  
Phone: 1300 482 651  
[www.schoolinfrastructure.nsw.gov.au](http://www.schoolinfrastructure.nsw.gov.au)