

Narrabeen Education Campus

Information pack | August 2022



Artist impression of the new multipurpose hall at Narrabeen North Public School

The NSW Government is investing \$8.6 billion in school infrastructure over the next four years, continuing its program to deliver 160 new and upgraded schools to support communities across NSW. This includes upgrades to Narrabeen North Public School and Narrabeen Sports High School.

The upgrades will support high-quality educational outcomes to meet the needs of students within the local community and deliver:



New and upgraded learning spaces from Kindergarten to Year 12



Upgraded learning spaces for specialist support classes



New multi-purpose hall for sports and performance at the primary school and expanded and refurbished multi-purpose hall at the high school.



Upgraded specialist teaching facilities such as science classrooms at the high school

Further details about the high school facilities will be shared with the community as the project progresses.

Project overview

We have progressed the concept designs of the primary school and the high school to the schematic design stage. Site investigations are underway to inform the development of the schematic design.

Feedback from school stakeholders has been brought together with input from architects, consultants and the department's technical stakeholder group to ensure the design of the schools reflects best practice and meets Educational Facilities Standards and Guidelines (EFSG).



An example of a flexible learning space for primary school students.

Narrabeen North Public School

The upgraded primary school will deliver:

- New flexible learning spaces
- Refurbished learning spaces
- New learning spaces for specialist support classes
- Refurbished special programs learning spaces
- New multipurpose hall for sports and performance
- Refurbished Library
- New administration hub
- Covered outdoor learning area (COLA)
- Innovative design principles including sustainability features



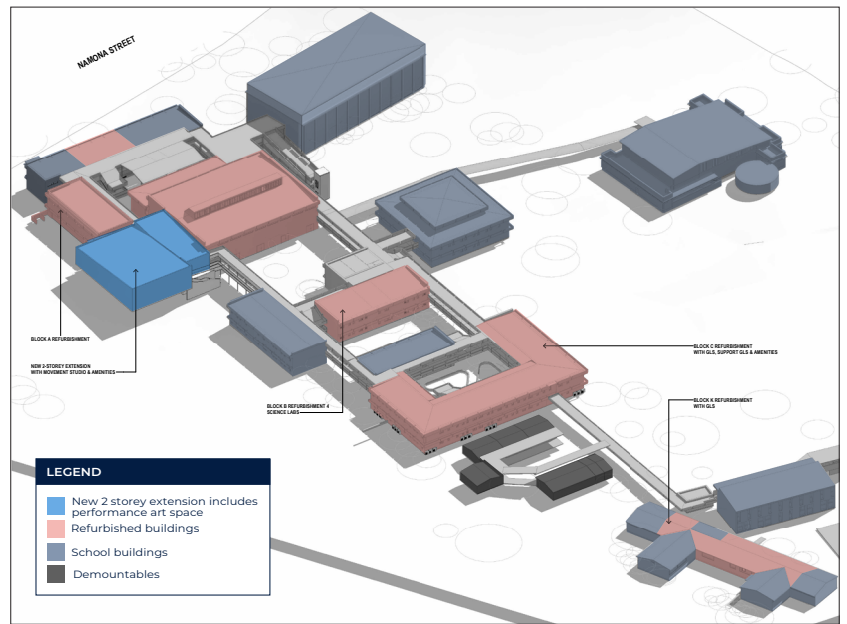
Artist impression of the new flexible learning spaces building.

Further details about the school features and facilities will be shared with the community as the project progresses.

Narrabeen Sports High School

The upgraded high school will deliver:

- Learning spaces for specialist support classes
- Technology-rich teaching and learning spaces
- Specialist science classrooms
- Wood and metal learning spaces and metal workshops
- Food and textile learning space
- New performing arts space
- Innovative design principles including sustainability features
- Expanded and refurbished multi-purpose hall



Artist impression of Narrabeen Sports High School.

Further details about the school features and facilities will be shared with the community as the project progresses.

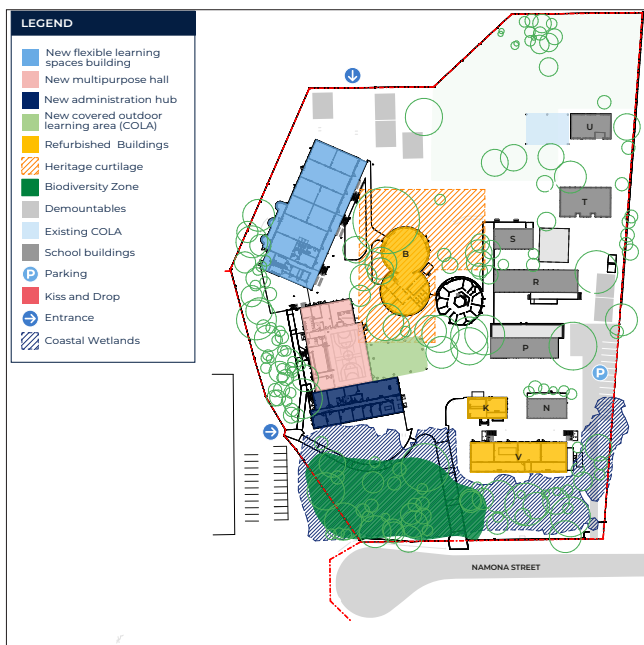
Site Plan

The site plans have been developed in consultation with the school and NSW Government Architects. The site plan best reflects the needs of the primary school and local community based on the spatial requirements, data, site constraints and the department's EFSG.

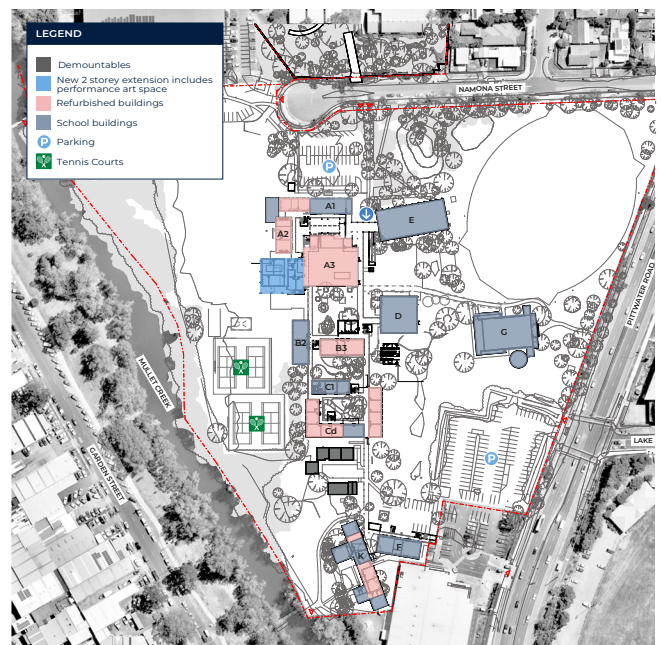
Buildings have been positioned to maximise opportunities for indoor and outdoor learning spaces, improve accessibility and preserve heritage aspects, trees and birdlife.

A staging plan will be finalised upon the appointment of the head contractor to minimise learning and teaching disruption.

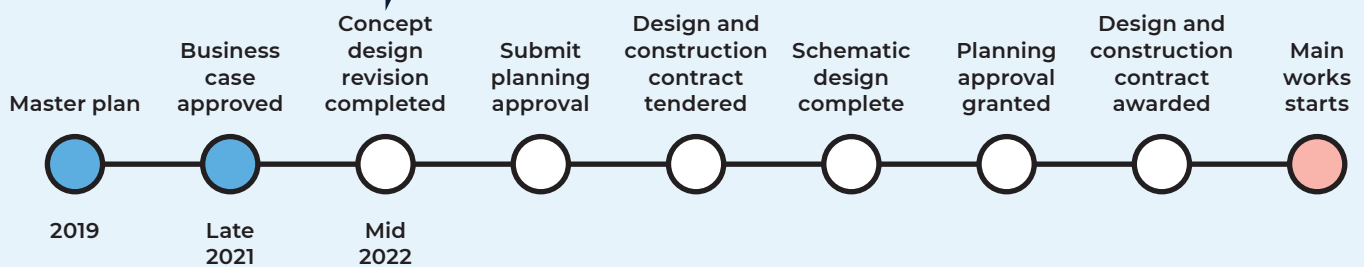
Narrabeen North Public School



Narrabeen North Public School



Timeline



Next Steps

We are progressing with statutory planning approvals with the lodgement of a second development application (DA) with the Northern Beaches Council for the upgrades to both schools.

Frequently asked questions

What is the statutory planning approval process?

School Infrastructure NSW requires multiple development pathways to build the upgrades at Narrabeen Education Campus.

Northern Beaches Council is responsible for managing the assessment and determination of the Development Application for the new multi-purpose hall and refurbished multi-purpose halls while the approval for the new and refurbished teaching spaces at both schools are via Development Without Consent, Review of Environmental Factors.

How does the design consider the local environment and sustainability?

We acknowledge the important part that sustainability has in the construction and life cycle of new schools and facilities. We will be targeting 5 Star Green Star accreditation for this project which is a Green Building Council of Australia certification that rates how sustainable a facility is.

When will main works construction begin?

Construction works are forecasted to start in early 2023 pending planning approval.

What safety measures will be in place?

The health and safety of the community are our highest priority. Fencing will be in place around the construction site securing the area and preventing public access. This will remain in place until the main works are complete. Traffic control measures will be in place as required.

We will work with the school community and head contractor to ensure the project is delivered in a safe manner with measures to include, traffic and pedestrian control, site fencing and restrictions to construction activities during key school activities.

What steps will be taken to control noise and dust?

Noise and dust control measures will be implemented. Secure fencing and shade cloth will be installed to minimise noise and dust impacts. Dust from construction works will be hosed down as required.

How will the school community be kept up to date?

Works notifications and project updates will be shared with the community to inform on construction progress and before any disruptive construction works or traffic changes. All information will be posted on the School Infrastructure website.

For more information contact:

School Infrastructure NSW
Website: schoolinfrastructure.nsw.gov.au
Email: schoolinfrastructure@det.nsw.edu.au
Phone: 1300 482 651