

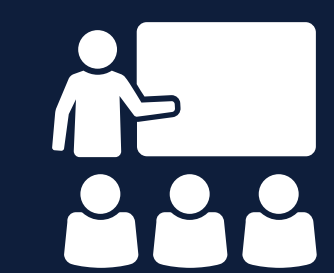
# Project overview

The NSW Government is investing \$8.6 billion in school infrastructure over the next four years, continuing its program to deliver 160 new and upgraded schools to support communities across NSW. This includes upgrades to Narrabeen North Public School and Narrabeen Sports High School.

The upgrade will support high quality educational outcomes to meet the needs of students within the local community and deliver:



New and upgraded learning space spaces from Kindergarten to Year 12



Upgraded learning spaces for specialist support classes



New multi-purpose hall for sports and performance at the primary school and an expanded and refurbished multi-purpose hall at the high school



Upgraded specialist teaching facilities such as science classrooms at the high school.



Artist impression of the new multipurpose hall and administration hub at Narrabeen North Public School.

## Narrabeen Education Campus

For more information phone: 1300 482 651  
Email: [schoolinfrastructure@det.nsw.edu.au](mailto:schoolinfrastructure@det.nsw.edu.au)



# Upgraded Narrabeen North Public School features

The upgraded primary school will deliver:



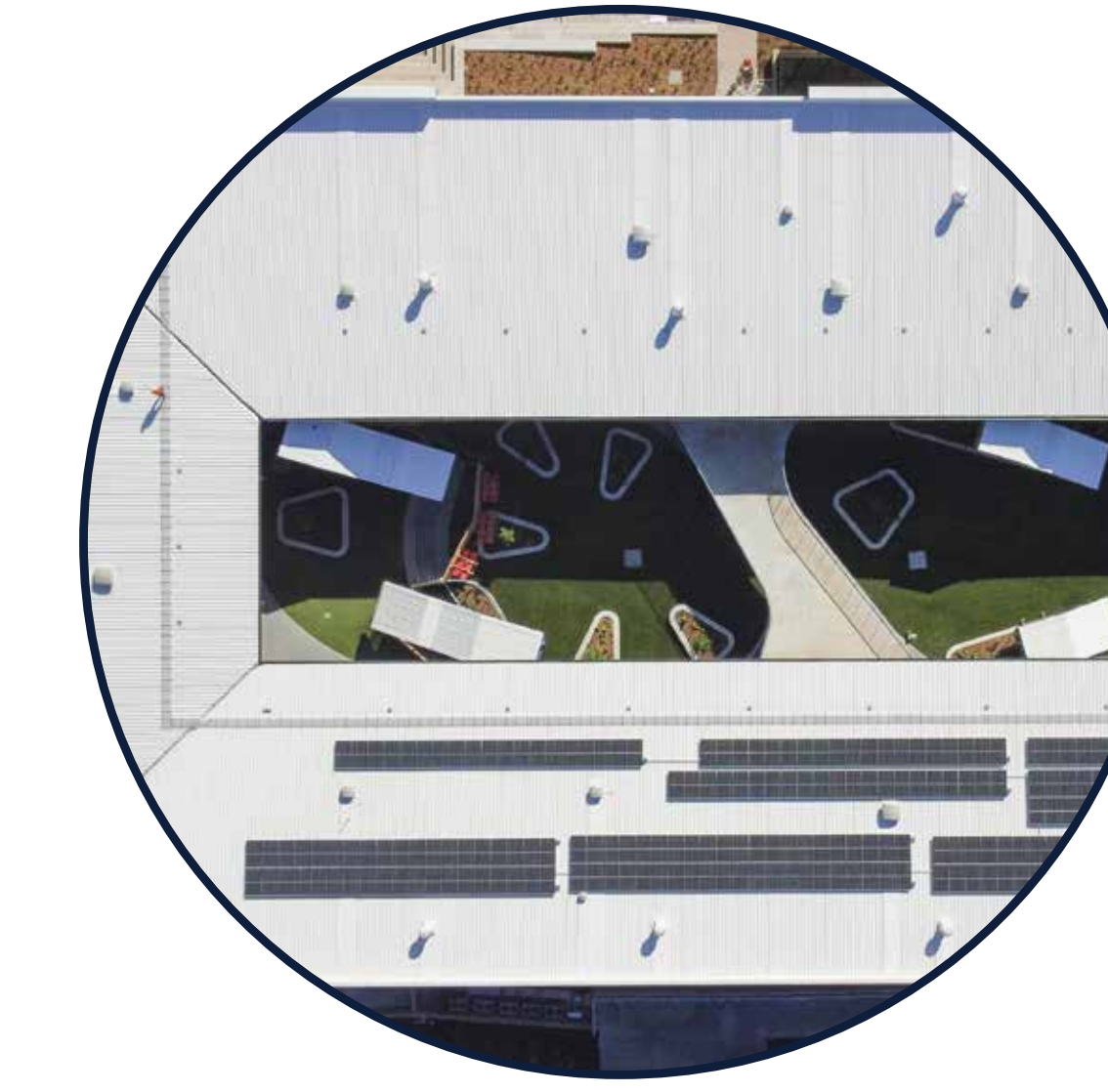
New learning spaces for specialist support classes



Refurbished Library



Refurbished learning spaces



Innovative design principles including sustainability features



New administration hub



Refurbished special programs learning spaces



New flexible learning spaces



New multipurpose hall for sports and performance



Covered outdoor learning area (COLA)

Further details about the school features and facilities will be shared with the community as the project progresses

## Narrabeen Education Campus

For more information phone: 1300 482 651  
Email: [schoolinfrastructure@det.nsw.edu.au](mailto:schoolinfrastructure@det.nsw.edu.au)



# Upgraded Narrabeen Sports High School features

The upgraded high school will deliver:



New learning spaces for specialist support classes



Technology-rich teaching and learning spaces



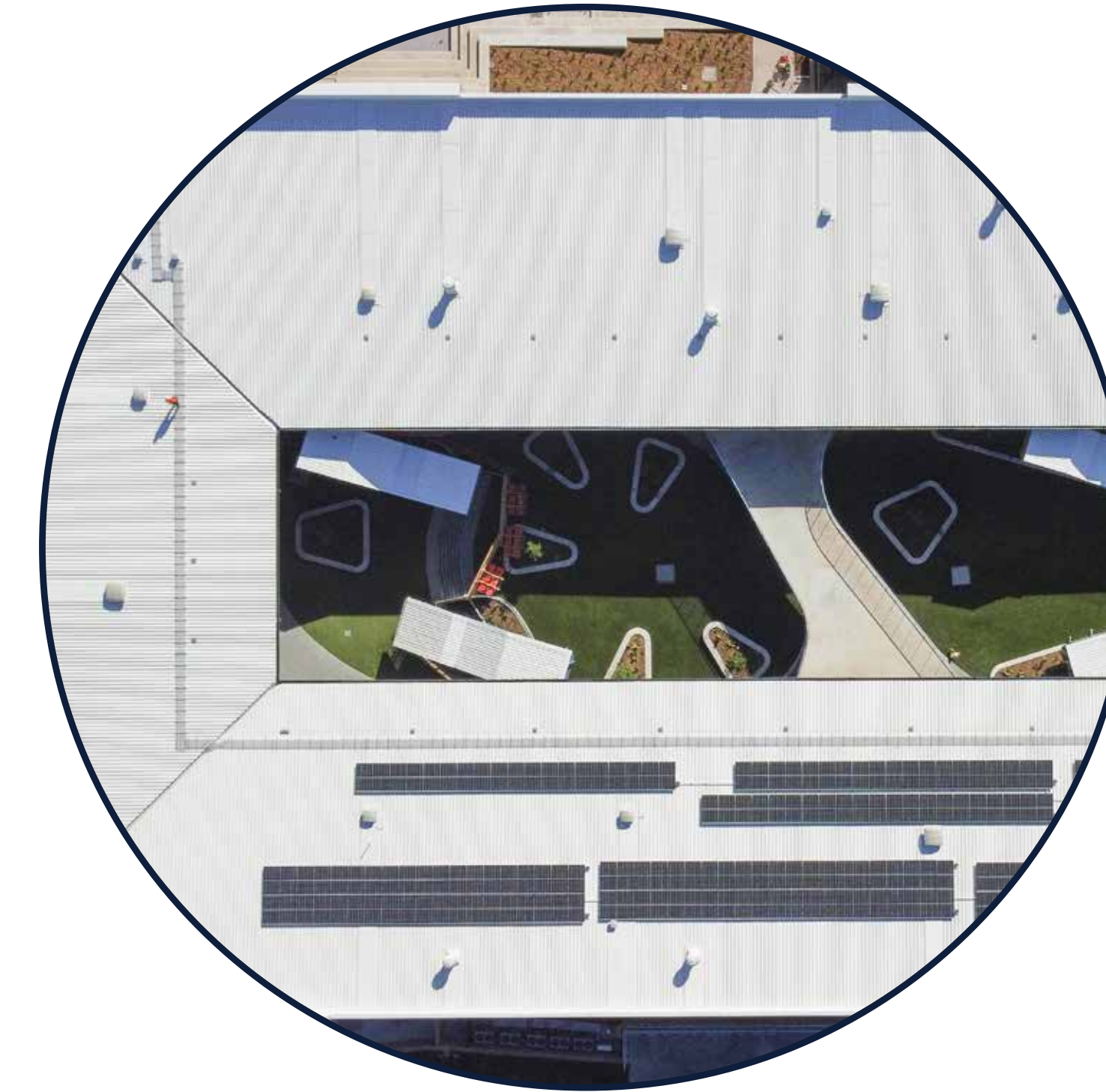
Specialist science classrooms



Wood and metal learning spaces and a metal workshop



Food and technology classrooms



Innovative design principles including sustainability features



New performing arts space and an expanded and refurbished hall

Further details about the school features and facilities will be shared with the community as the project progresses.

## Narrabeen Education Campus

For more information phone: 1300 482 651  
Email: [schoolinfrastructure@det.nsw.edu.au](mailto:schoolinfrastructure@det.nsw.edu.au)



# Flexible learning spaces

Contemporary learning and teaching prepares students for a diverse and interconnected world. We are evolving the ways we teach our students new skills valued by a changing workforce, understand different ways students learn and support new ways of interacting with information through technology.

Flexible learning spaces are designed and equipped to support contemporary learning and teaching.

## What makes a flexible learning space?



### Learning space

- Different zones (areas of a building or floors) are designed to support a range of activities sometimes grouped by subject area
- Varied furniture allows for student choice, comfort and flexibility
- Spaces are flexibly connected allowing students to work in varied group sizes
- Connection between indoor and outdoor learning spaces



### Organisation

- Movement is encouraged for students and teachers to collaborate and interact
- More than one teacher may be available to students within the learning environment
- Students learn in classes, small groups or individually



### Teaching and learning

- Learning is personalised
- Learning is connected across different subject areas
- There is a focus on creativity and innovation with students prototyping, testing and using technology in creative ways



### Technology

- Technology is integrated into spaces to extend learning opportunities
- WiFi is available everywhere including outdoors
- Specialist equipment is available for students to innovate, communicate and create

## Narrabeen Education Campus








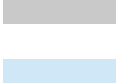





For more information phone: 1300 482 651  
Email: [schoolinfrastructure@det.nsw.edu.au](mailto:schoolinfrastructure@det.nsw.edu.au)

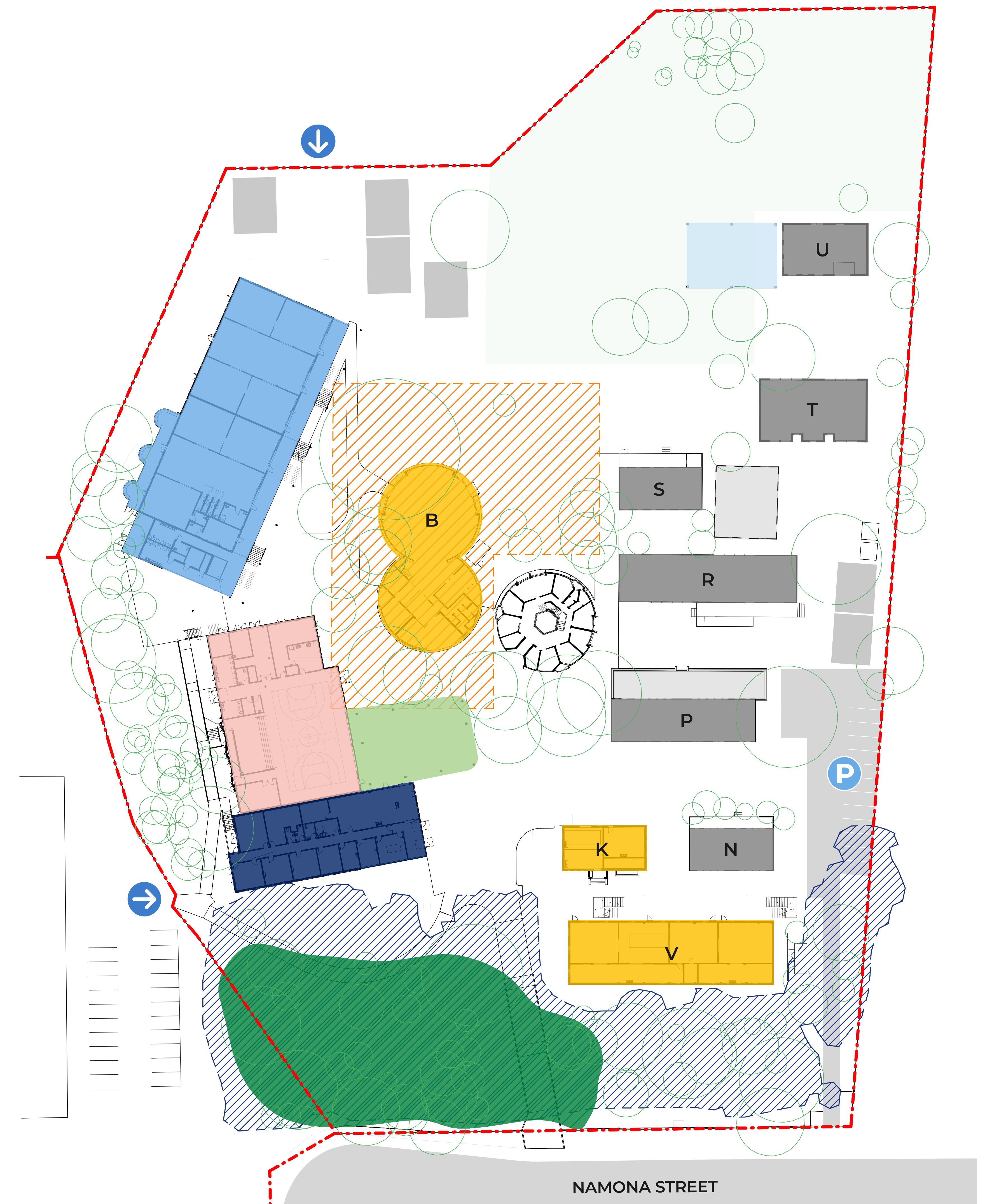


# Narrabeen North Public School Site Plan

The design considers the needs of the school, community, the complexities of the site and the area's distinctive character.

A staging plan will be finalised upon the appointment of the lead contractor to minimise learning and teaching disruption.

LEGEND	
	New flexible learning spaces building
	New multipurpose hall
	New administration hub
	New covered outdoor learning area (COLA)
	Refurbished Buildings
	Heritage curtilage
	Biodiversity Zone
	Demountables
	Existing COLA
	School buildings
	Parking
	Kiss and Drop
	Entrance
	Coastal Wetlands



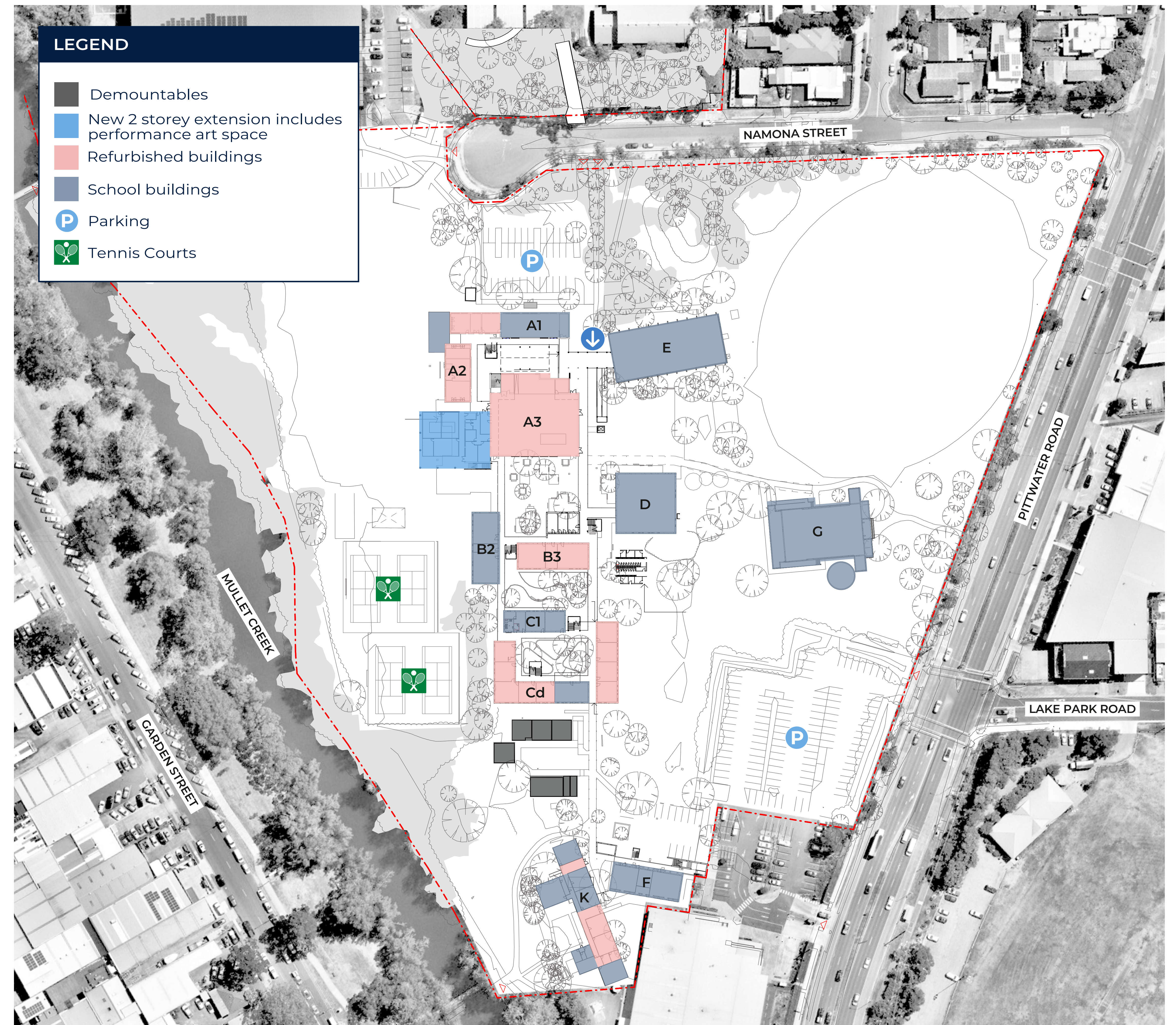
## Narrabeen Education Campus

For more information phone: 1300 482 651  
Email: schoolinfrastructure@det.nsw.edu.au



# Narrabeen Sports High School Site Plan

The site plan best reflects the needs of the Narrabeen Sports High School based on the spatial requirements, data, site constraints and the department's Educational Facilities Standards and Guidelines (EFSG).



## Narrabeen Education Campus

For more information phone: 1300 482 651  
Email: schoolinfrastructure@det.nsw.edu.au



# Narrabeen North Public School Artist Impressions

The artist impressions are at a concept design stage and are subject to change.



Artist impression of the new multipurpose hall and administration hub at Narrabeen North Public School.



Artist impression of the new flexible learning spaces at Narrabeen North Public School.

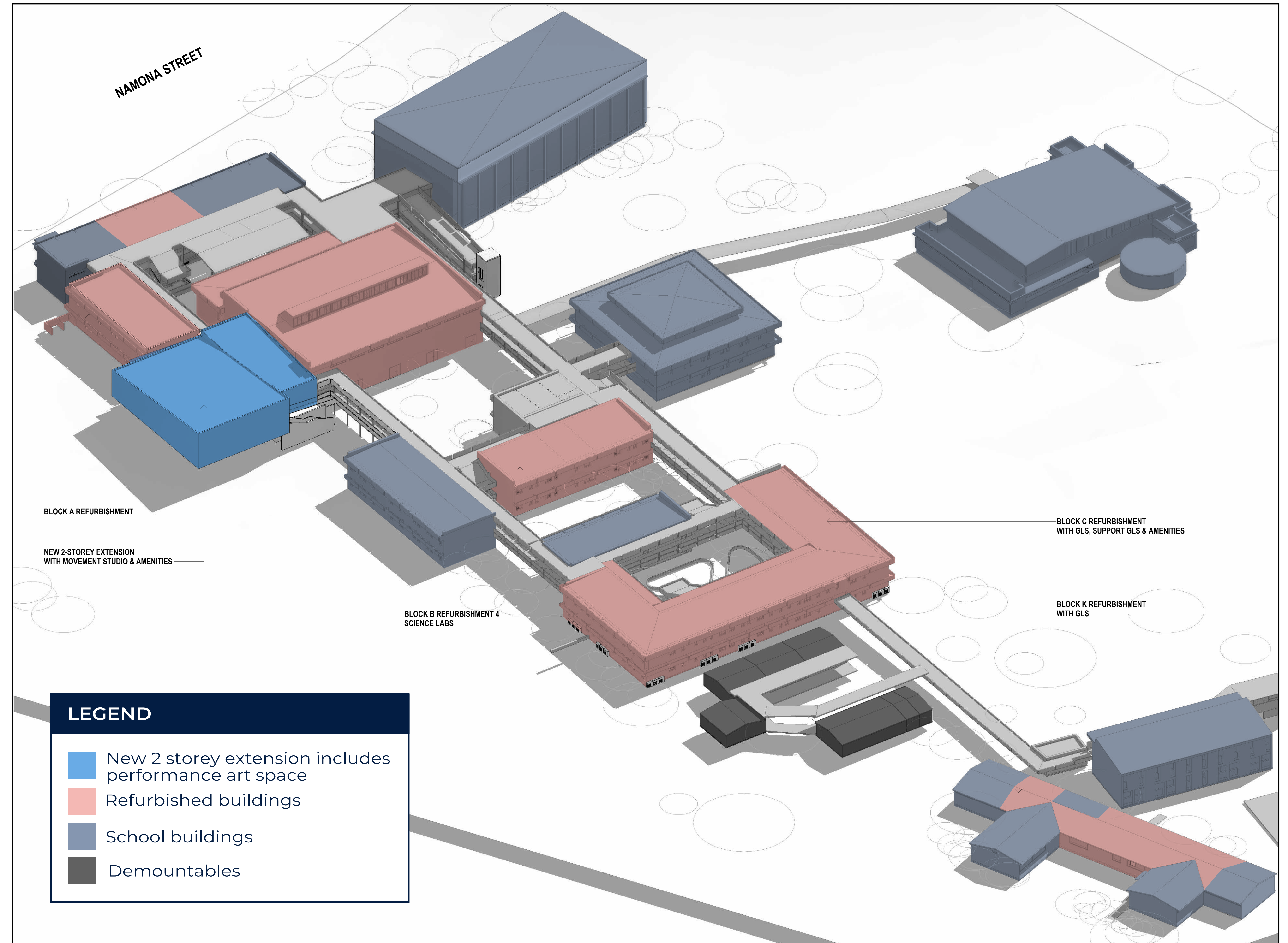
## Narrabeen Education Campus

For more information phone: 1300 482 651  
Email: [schoolinfrastructure@det.nsw.edu.au](mailto:schoolinfrastructure@det.nsw.edu.au)



# Narrabeen Sports High School Artist Impressions

The artist impressions are at a concept design stage and are subject to change.



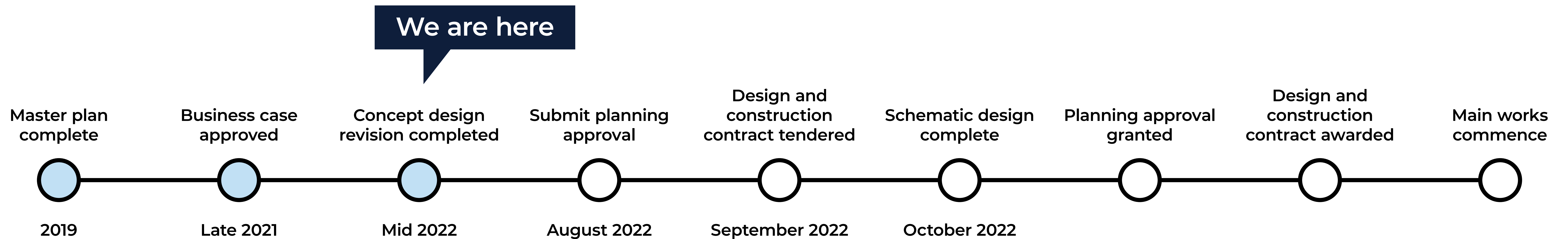
Artist impression of the upgraded of Narrabeen Sports High School.

## Narrabeen Education Campus

For more information phone: 1300 482 651  
Email: [schoolinfrastructure@det.nsw.edu.au](mailto:schoolinfrastructure@det.nsw.edu.au)



# Project timeline



## What's next?

We are progressing with statutory planning approvals with the lodgement of a second development application (DA) with the Northern Beaches Council for the upgrades to both schools.

## Narrabeen Education Campus

For more information phone: 1300 482 651  
Email: [schoolinfrastructure@det.nsw.edu.au](mailto:schoolinfrastructure@det.nsw.edu.au)