

## New primary school in Mulgoa Rise Glenmore Park

Planning update

November 2020

### Process



### Investing in our schools

The NSW Government is investing \$6.7 billion over four years to deliver more than 190 new and upgraded schools to support communities across NSW. This is the largest investment in public education infrastructure in the history of NSW.

The NSW Department of Education is committed to delivering new and upgraded schools for communities across NSW. The delivery of these important projects is essential to the future learning needs of our students and supports growth in the local economy.

### Planning for a new school in Mulgoa Rise, Glenmore Park

A project is underway to deliver a new public school for Mulgoa Rise, Glenmore Park to meet enrolment demand in the local area. The new primary school is proposed to accommodate up to 1000 students in innovative, flexible learning spaces. The project is expected to be completed in early 2023.

### Progress summary and next steps

Early planning has progressed for this project. Early planning typically involves the development of a business case, design development and preliminary site investigations.

The project has completed the initial planning phase, including submission of the Business Case to Treasury and development of the Concept Design. Current steps include the development of the Schematic Design as well as progression of the statutory planning pathway. The first step of the planning approval process was through the lodgment of a Secretary Environmental Assessment Requirements (SEARs).

The Department of Planning, Industry and Environment (DPIE) will now assess the project and advise the project team on the studies that need to be included as part of the

main development application. This advice is expected to be received in early 2021.

After the development application is lodged with DPIE, the project will be placed on public exhibition, allowing the community and other stakeholders to make comments. We expect this will take place in late 2021. Once the development application has been approved, construction work can start.

The project team will keep the school community informed of progress and seek feedback at key project milestones. Please stay up to date through the School Infrastructure NSW website.

### How can I get involved?

We are committed to working together with our school communities and other stakeholders to deliver the best possible learning facilities for students. Your feedback on this project is important to us. For more information, or to ask a question or make a comment, please email us at: [schoolinfrastructure@det.nsw.edu.au](mailto:schoolinfrastructure@det.nsw.edu.au).

### Changing the way we communicate

The health and safety of our students, staff and community are our priorities. We are temporarily changing some of the ways we keep you informed about our projects in your community to account for physical distancing measures during the COVID-19 pandemic.

Until further notice we will share information with our communities online instead of in person. Our information hotline and email address will continue to operate as normal.

### For more information contact:

School Infrastructure NSW  
Email: [schoolinfrastructure@det.nsw.edu.au](mailto:schoolinfrastructure@det.nsw.edu.au)  
Phone: 1300 482 651  
[www.schoolinfrastructure.nsw.gov.au](http://www.schoolinfrastructure.nsw.gov.au)

## Meeting future enrolment growth in Glenmore Park

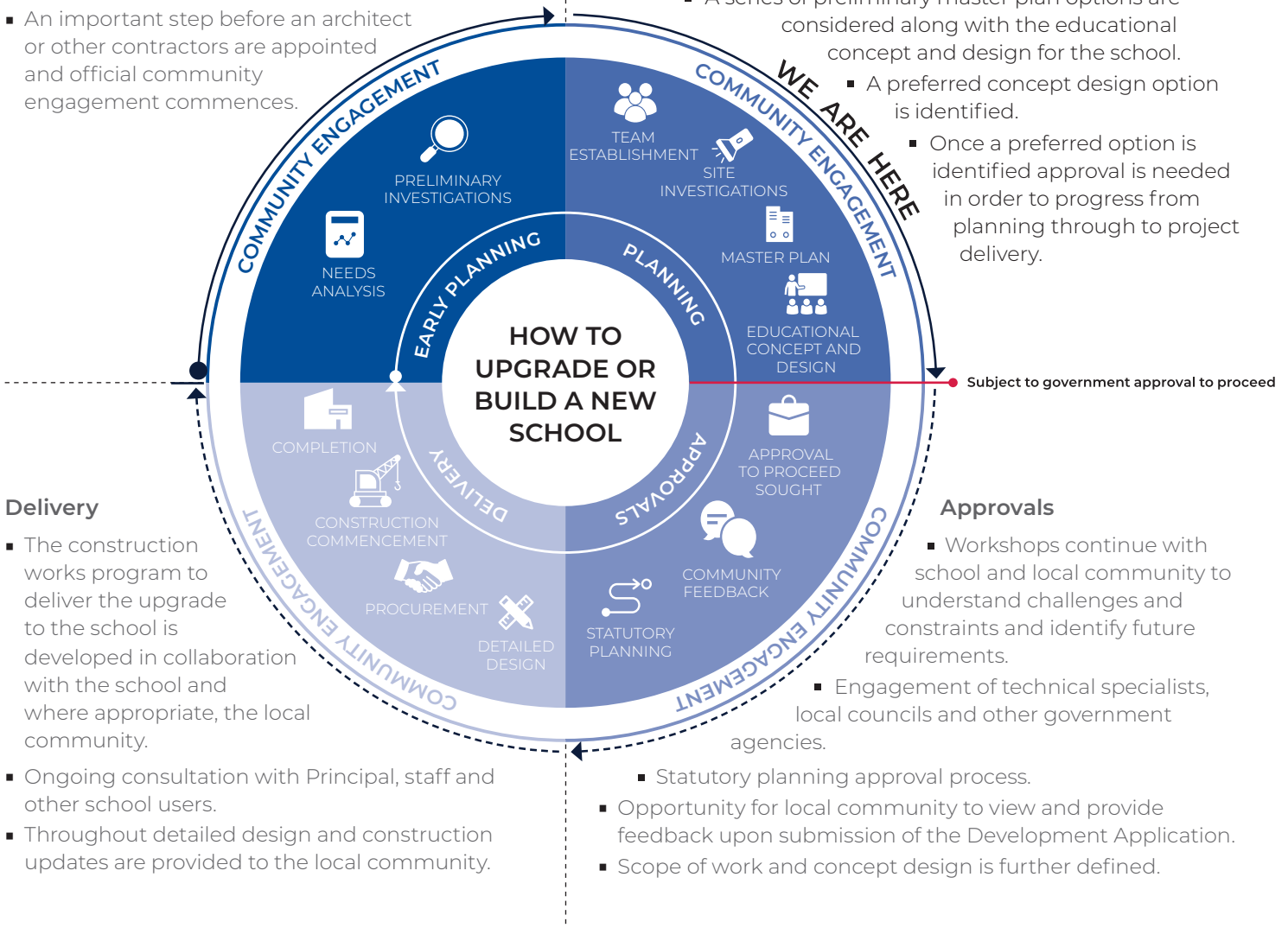
This diagram takes you through the journey of upgrading or building a new school.

### Early planning

- Consideration and studies of demographic trends, education requirements, the condition of the existing school buildings, catchment boundaries, heritage requirements, transport links and partnership opportunities.
- Doing so means that we:
  - consider the needs of the local area now and into the future.
  - ensure the right school is designed for the community.
- An important step before an architect or other contractors are appointed and official community engagement commences.

### Planning

- Consultants such as architects and project managers are appointed.
- Investigation and review of site and development of master plan options.
- Master planning considers options for the general size, shape and form of buildings for a specific school site.
- A Project Reference Group (PRG) is established.
- Operational, educational and service delivery factors are understood and considered by the PRG.
  - A series of preliminary master plan options are considered along with the educational concept and design for the school.
  - A preferred concept design option is identified.
  - Once a preferred option is identified approval is needed in order to progress from planning through to project delivery.



### Delivery

- The construction works program to deliver the upgrade to the school is developed in collaboration with the school and where appropriate, the local community.
- Ongoing consultation with Principal, staff and other school users.
- Throughout detailed design and construction updates are provided to the local community.

### Approvals

- Workshops continue with school and local community to understand challenges and constraints and identify future requirements.
  - Engagement of technical specialists, local councils and other government agencies.
  - Statutory planning approval process.
  - Opportunity for local community to view and provide feedback upon submission of the Development Application.
  - Scope of work and concept design is further defined.