

New primary school in Mulgoa Rise Glenmore Park – Nangamay Public School

Works notification

14 September 2022

A new primary school is being developed to cater for the growing population in the Mulgoa Rise and Glenmore Park communities. The project – Nangamay Public School - will deliver facilities for up to 400 students, and will include new flexible learning spaces, a multipurpose hall, staff administration areas, a library, and a sports court and playing fields.

Temporary traffic changes on Deerubbin Drive and Forestwood Drive

Public domain works to improve the footpaths on Deerubbin Drive and Forestwood Drive will begin on Thursday 15 September and are expected to take about 6 weeks. These works will improve the amenity of the pedestrian walkways and help children get to the new school safely.

The works on Deerubbin Drive include demolition of the current kerb and footpath and construction of a new kerb and footpath between Glenholme Drive and Deerubbin Drive.

The works on Forestwood Drive include demolition of the existing kerb and footpath and construction of a new driveway.

Sections of the footpath and parking bays will be closed while these works are being completed. Barriers and signage will be put in place to direct pedestrians safely across the road. The blue line on the maps overleaf indicate what areas will be affected.

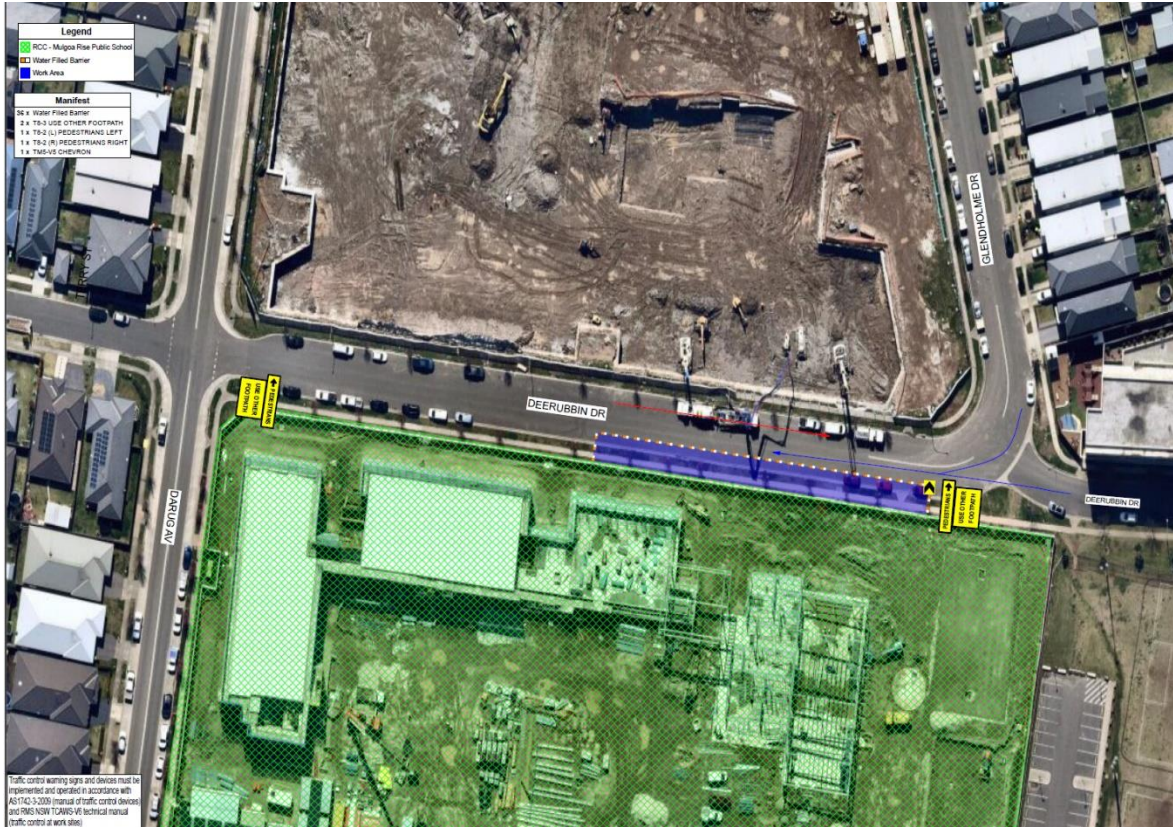
Work will take place within approved hours between 7:00 am to 6:00 pm, Monday to Friday and 8:00 am to 1:00 pm Saturday. No work will take place on Sundays and public holidays, unless otherwise notified.

We will continue to work with you, the local community, to minimise the impact of construction works.

We apologise for any inconvenience this may cause and thank you for your patience and understanding while we complete these essential works.

For more information contact:

School Infrastructure NSW
Email: schoolinfrastructure@det.nsw.edu.au
Phone: 1300 482 651
www.schoolinfrastructure.nsw.gov.au



Sections of the footpath and parking bays on Deerubbin Drive closed due to works, marked in blue



Sections of the footpath and parking bays on Forestwood Drive closed due to works, marked in blue

For more information contact:

School Infrastructure NSW
 Email: schoolinfrastructure@det.nsw.edu.au
 Phone: 1300 482 651
www.schoolinfrastructure.nsw.gov.au