



Artist impression of the new primary school in Mulgoa Rise Glenmore Park

New primary school in Mulgoa Rise Glenmore Park

Project update

March 2022

Investing in our schools

The NSW Government is investing \$7.9 billion over the next four years, continuing its program to deliver 215 new and upgraded schools to support communities across NSW. This is the largest investment in public education infrastructure in the history of NSW.

The NSW Department of Education is committed to delivering new and upgraded schools for communities across NSW. The delivery of these important projects is essential to the future learning needs of our students and supports growth in the local economy.

Project overview

Final preparations are underway prior to construction of a new primary school in Mulgoa Rise Glenmore Park.

The project will deliver 20 flexible learning spaces, including a special program unit, core facilities and sports field to cater for up to 400 students from Kindergarten to Year 6.

Construction is scheduled for completion in 2023.

Progress Summary

The State Significant Development (SSD) application has been approved by the NSW Department of Planning and Environment (DPE) and the detailed design is complete.

For more information contact:

School Infrastructure NSW
Email: schoolinfrastructure@det.nsw.edu.au
Phone: 1300 482 651
www.schoolinfrastructure.nsw.gov.au

| NSW Department of Education – School Infrastructure

Construction

Construction works have been approved to occur between 7 am and 6 pm, Monday to Friday and 8 am to 1 pm, Saturday. No work will take place on Sundays unless otherwise advised. Works may also occur between 6 pm and 7 pm Monday to Friday and between 1 pm and 4 pm Saturday provided they do not exceed background noise levels by more than 5 decibels. Certain construction activities may be undertaken outside of these hours under specific circumstances as detailed in the consent conditions.

Managing construction impacts

Works are anticipated to start soon, starting with site establishment and followed by earthworks and construction of the new learning facilities.

As part of the consent to carry out the work, the contractor is required to develop a Construction Environmental Management Plan (CEMP) and a Construction Noise and Vibration Management Sub-Plan (CNVMP) to outline how it will manage construction impacts to nearby residents. These impacts include noise, vibration and vehicle movements.

You can view the consent conditions, including those required for managing construction impacts on the Planning Portal webpage at pp.planningportal.nsw.gov.au/major-projects/projects/new-public-school-mulgoa-rise-glenmore-park.

You can also take a look at the construction impacts consent conditions and proposed action overleaf.



Artist impression of the new primary school in Mulgoa Rise Glenmore Park

For more information contact:

School Infrastructure NSW
Email: schoolinfrastructure@det.nsw.edu.au
Phone: 1300 482 651
www.schoolinfrastructure.nsw.gov.au

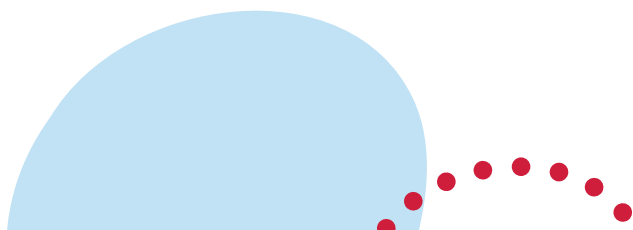
Consent conditions and proposed action

Below are some key consent conditions from DPIE for the new primary school in Mulgoa Rise Glenmore Park. Please let us know if you have any feedback or questions about these consent conditions and the associated management actions listed by contacting us via email at schoolinfrastructure@det.nsw.edu.au or phone 1300 482 651 by Monday 28 March 2022.

Activity	Consent conditions and proposed action
General	<ul style="list-style-type: none"> ▪ Noise levels generated by the operations on site shall not exceed the noise control guidelines outlined in the EPA Environmental Noise Control Manual for construction/ demolition works. ▪ The local community will be provided with advance notice of work, particularly outlining any anticipated high-noise works and approved out of hours works. ▪ Trucks will be maintained with low-noise mufflers and only use approved truck routes to and from the site.
Construction	<p>Consent condition: Construction hours</p> <p>Proposed actions:</p> <ul style="list-style-type: none"> ▪ Overall construction hours are limited to approved hours: 7 am to 6 pm, Monday to Friday; 8 am to 1 pm Saturdays. Low-noise works may take place during approved hours; 6 pm to 7 pm Monday to Friday; 1 pm to 4 pm Saturdays. ▪ Certain construction activities may be undertaken outside of these hours under specific circumstances as detailed in the consent conditions. ▪ If rock breaking activities are required, impacts will be managed through equipment selection, and respite periods. Rock breaking hours will be strictly limited to approved hours: 9 am to 12 pm, Monday to Friday; 2 pm to 5 pm Monday to Friday; 9 am to 12 pm, Saturday.
Construction	<p>Consent condition: Noise and Vibration</p> <p>Proposed actions:</p> <ul style="list-style-type: none"> ▪ A Construction Noise and Vibration Management Sub-Plan (CNVMP) will be prepared by a suitably qualified and experienced noise expert. ▪ Plant and equipment will be set up/orientated to direct noise away from the closest receivers/residents. ▪ The quietest suitable machinery will be selected to perform works. ▪ In close proximity to sensitive receivers/residents, machines will not be used/run simultaneously ▪ If rock breaking activities are required, impacts will be managed through equipment selection, and respite periods.
Construction	<p>Consent condition: Soil and Water Management</p> <p>Proposed actions:</p> <ul style="list-style-type: none"> ▪ A Construction Soil and Water Management Sub-Plan (CSWMSP) will be prepared by a suitably qualified expert, in consultation with Council. ▪ Sediment and Erosion Management Plans are to be enforced prior to any works commencing on site.
Construction	<p>Consent condition: Traffic and Pedestrian Management</p> <p>Proposed actions:</p> <ul style="list-style-type: none"> ▪ A Construction Traffic and Pedestrian Management Sub-Plan (CTPMSP) will be prepared by a suitably qualified expert to ensure road and pedestrian safety. ▪ Traffic control personnel will be on-site on an as need basis to ensure minimal interruption to traffic and pedestrians.

For more information contact:

School Infrastructure NSW
 Email: schoolinfrastructure@det.nsw.edu.au
 Phone: 1300 482 651
www.schoolinfrastructure.nsw.gov.au



Frequently asked questions

When will main construction works start?

The construction is expected to start in early 2022, with preparatory works scheduled to start in March 2022.

What steps will be taken to control noise and dust impacts?

The contractor will continue to implement dust and noise control measures in accordance with the consent conditions.

How will traffic be managed?

Traffic management will be in place where required for the safety of the local community and workers. Traffic controllers will be used to manage the entry and exit of vehicles to and from the construction site as necessary.

Vehicles will give way to pedestrians at all times.

Will street parking be impacted during construction?

Street parking impacts will be minimised where possible. We will work with local communities to identify issues and put in place measures to mitigate the effects.

Will utility services be interrupted as part of the construction?

School Infrastructure NSW coordinates upgrades or new supplies of utility services with local providers to minimise disruption. In the event of a disruption to services in the local area, we will notify businesses and residents in advance.

Is there a COVID safety plan in place?

A comprehensive COVID-19 Safety Plan will be in place for the site and the contractor will enforce strict compliance with Public Health Orders. Our construction sites will follow all current health guidelines.

For more information contact:

School Infrastructure NSW
Email: schoolinfrastructure@det.nsw.edu.au
Phone: 1300 482 651
www.schoolinfrastructure.nsw.gov.au