



Murwillumbah Education Campus

Project update

March 2021

Investing in our schools

The NSW Government is investing \$7 billion over the next four years, continuing its program to deliver more than 200 new and upgraded schools to support communities across NSW. This is the largest investment in public education infrastructure in the history of NSW.

The NSW Department of Education is committed to delivering new and upgraded schools for communities across NSW. The delivery of these important projects is essential to the future learning needs of our students and supports growth in the local economy.

Project overview

We are planning the development of an education campus at the Murwillumbah High School site. The campus will include a primary school, a high school and school community health facilities co-located within an integrated, purpose designed and built education campus.

Progress summary

We have now finalised the master plan for the campus. The master plan is the first of four design phases and provides a high level vision for the site. The final design of buildings will be determined in future design phases, in consultation with stakeholders.

We are also preparing to submit a request for the NSW Planning Secretary's Environmental Assessment Requirements (SEARs) for the project. This is the first step in the statutory planning approval process.

Online survey results

Feedback received through the stakeholder and community survey, which ran from 15 December 2020 to 15 February 2021, is being used to inform the design process.

Thank you to those who took part. The survey attracted more than 229 responses. See overleaf for a summary of what you told us.

Visit us at the Community Information Hub

We invite you to find out more about the master plan and talk to representatives of the project team at the Murwillumbah Education Campus Community Information Hub.

The opening date for the Community Information Hub has been delayed due to wet weather. The hub will now open in Knox Park on Monday 29 March and close on Thursday 1 April 2021.



Registration is required to enable physical distancing. To view opening hours and book a time to visit the hub, scan the QR code or go to edu.nsw.link/ygd7rn

Stay informed

The Murwillumbah Education Campus project page on the School Infrastructure NSW website will continue to have up-to-date information about the project. You can also continue to contact us by email or phone using the details below.

For more information contact:

School Infrastructure NSW
Email: schoolinfrastructure@det.nsw.edu.au
Phone: 1300 482 651
www.schoolinfrastructure.nsw.gov.au

Here's a summary of what you told us

Respondents hope that the schools and campus will offer:



A welcoming, inclusive atmosphere



Personalised attention for all students



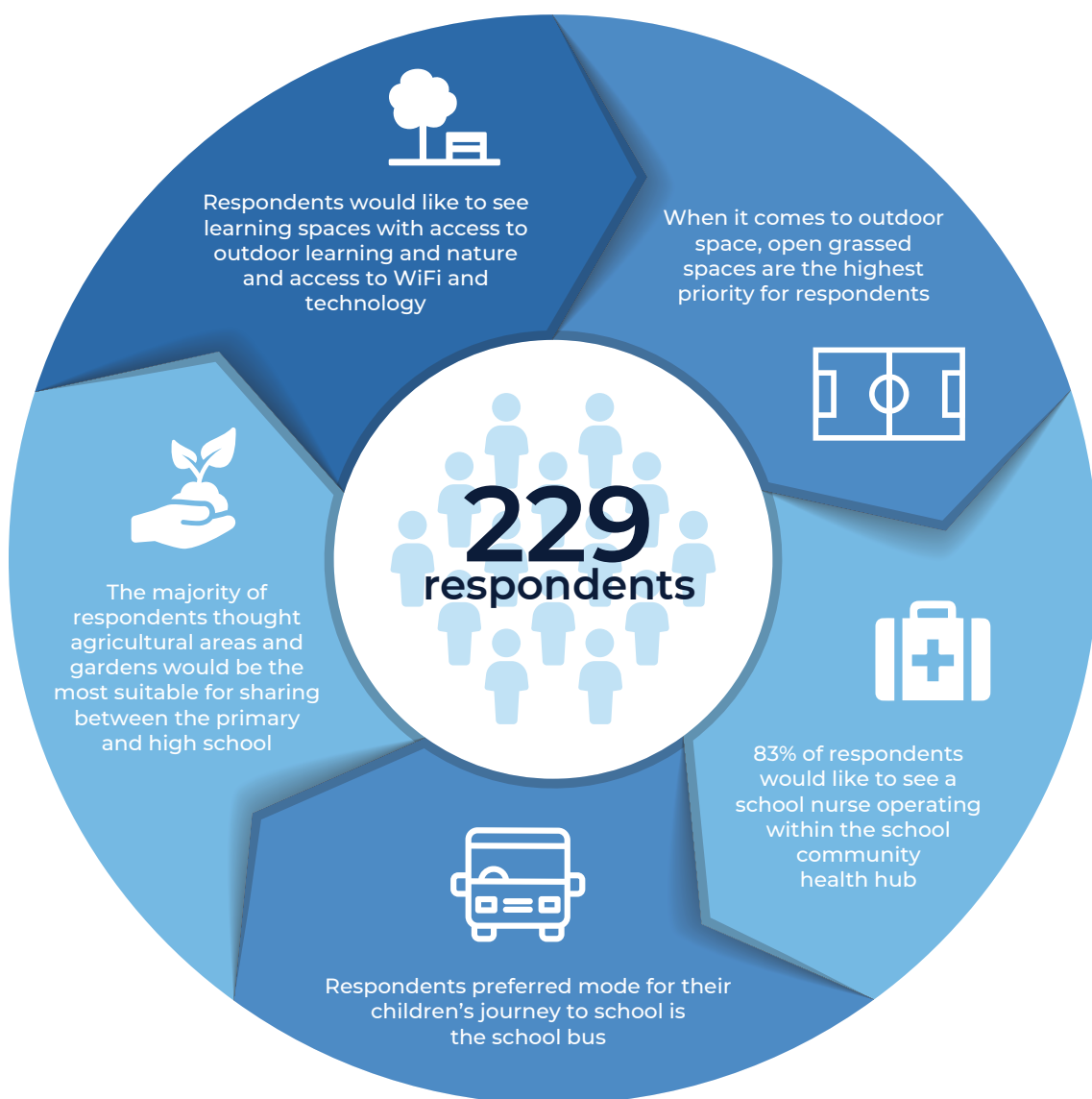
A positive school culture and high behaviour standards



An exceptional education experience



A strong sense of community



For more information contact:

School Infrastructure NSW
Email: schoolinfrastructure@det.nsw.edu.au
Phone: 1300 482 651
www.schoolinfrastructure.nsw.gov.au