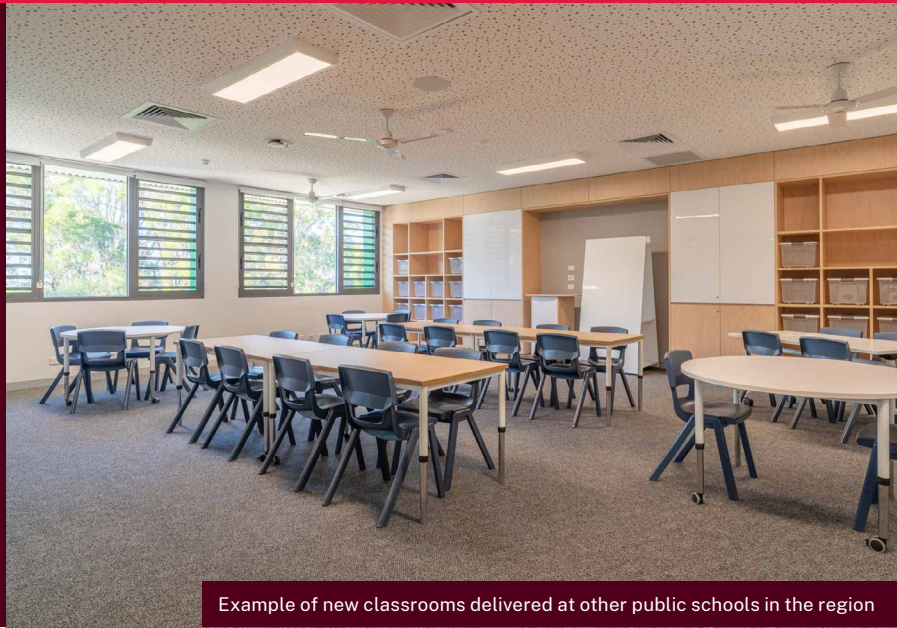


Murwillumbah East Public School

Information Pack – June 2025



Example of new classrooms delivered at other public schools in the region

Investing in our schools

As part of the NSW Government's plan to rebuild public education, the 2024-25 Budget is delivering record education funding, including \$1.4 billion for new and upgraded schools in regional NSW. This targeted investment will ensure growing communities get access to a world class public education.

Project overview

Planning is underway for construction of new permanent, flood resilient facilities at Murwillumbah East Public School. The department is working with the school executive and local Directors, Educational Leadership to understand educational and operational priorities and finalise the project scope.

It is expected the project will deliver:



new permanent classrooms



new canteen



new permanent facilities for specialist support classes



removal of demountable buildings

For more information

Phone: 1300 482 651

Email: schoolinfrastructure@det.nsw.edu.au

Website: schoolinfrastructure.nsw.gov.au



Progress summary

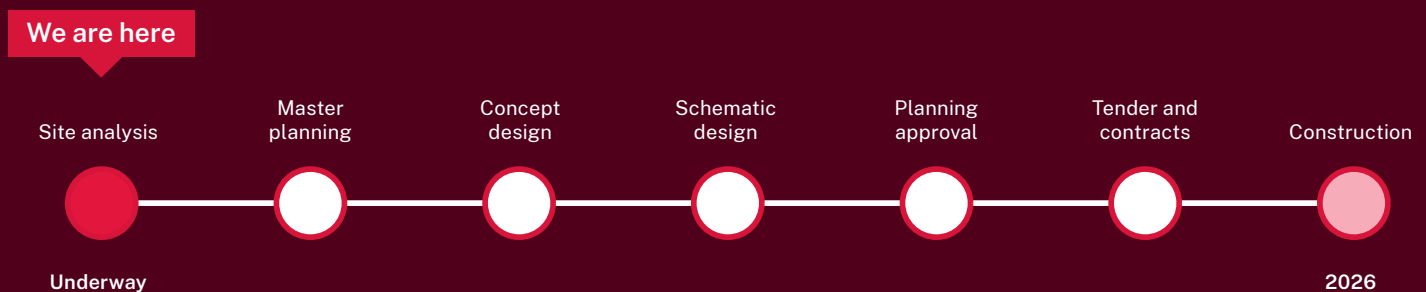
We are moving through the site analysis phase for the upgrade of Murwillumbah East Public School. Technical experts have been contracted and are preparing the reports needed to support planning activities.

Information gathered during site investigations is being used to develop master plan options, including what new facilities will be provided where on the school site to meet the needs of the school over the long term.

Master plans will form part of the Business Case for the project, which is required to seek formal approval from the NSW Government for the project to proceed in the way we have proposed.

Initial project timeline

The timeline below is based on current expectations and is subject to change. The delivery program will be confirmed once the construction contractor has been engaged and the project has received planning approval.



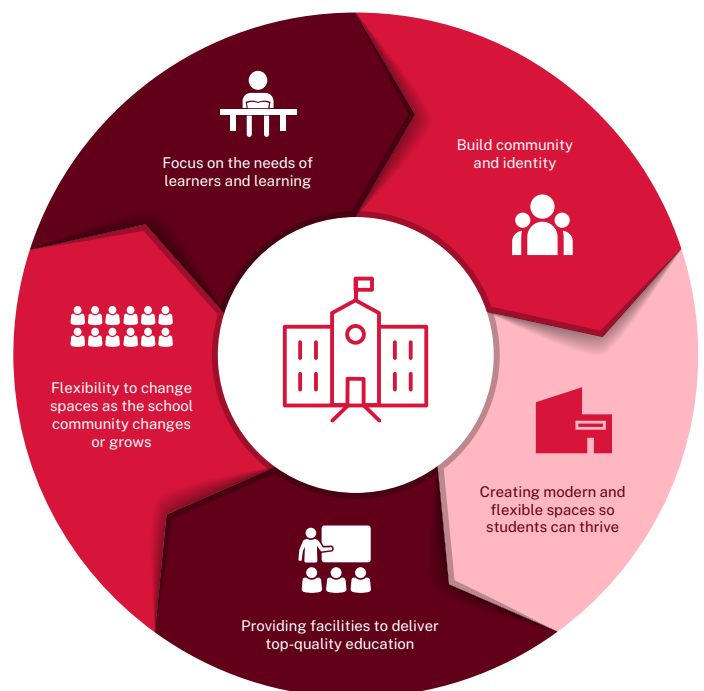
Design approach

When designing new schools we are guided by evidence-based, standard design principles which are applied with flexibility to meet individual school needs.

These guidelines are essential to delivering more uniform school designs and quality learning environments that:

- are safe, functional and adaptable
- meet the learning needs of all students
- are fit for purpose to deliver the curriculum
- meet and comply with all NSW legal and policy requirements
- use resources sustainably to minimise impact on the local environment
- deliver value for money and reduce long term maintenance costs.

This approach also ensures major school projects can be built quickly, efficiently and equitably for all communities.



Examples of new facilities

The photos on this page and overleaf show new, flood resilient schools that have been built in the Northern Rivers region over the past few years.



Exterior of Broadwater Public School, showing elevation of the building above predicted flood levels



Exterior of Empire Vale Public School



Classroom at Broadwater Public School



Practical activities area at Broadwater Public School



Learning commons at Empire Vale Public School



Withdrawal room at Empire Vale Public School



Aerial view of Broadwater Public School, showing elevation of the building above predicted flood levels



General learning space at Empire Vale Public School

More information



To find out more about the project or keep up to date with progress, visit the project page on our website at edu.nsw.link/MurwillumbahEastPS-Upgrade or scan the QR code.

If you have any questions about this project, you can contact School Infrastructure during business hours:

Website: schoolinfrastructure.nsw.gov.au

Email: schoolinfrastructure@det.nsw.edu.au

Phone: 1300 482 651