

# Murwillumbah East Public School upgrade

Planning is underway for construction of new permanent, flood resilient facilities at Murwillumbah East Public School.

The department is working with the school executive and local Directors, Educational Leadership to understand educational and operational priorities and finalise the project scope.

It is expected the project will deliver:



new permanent classrooms



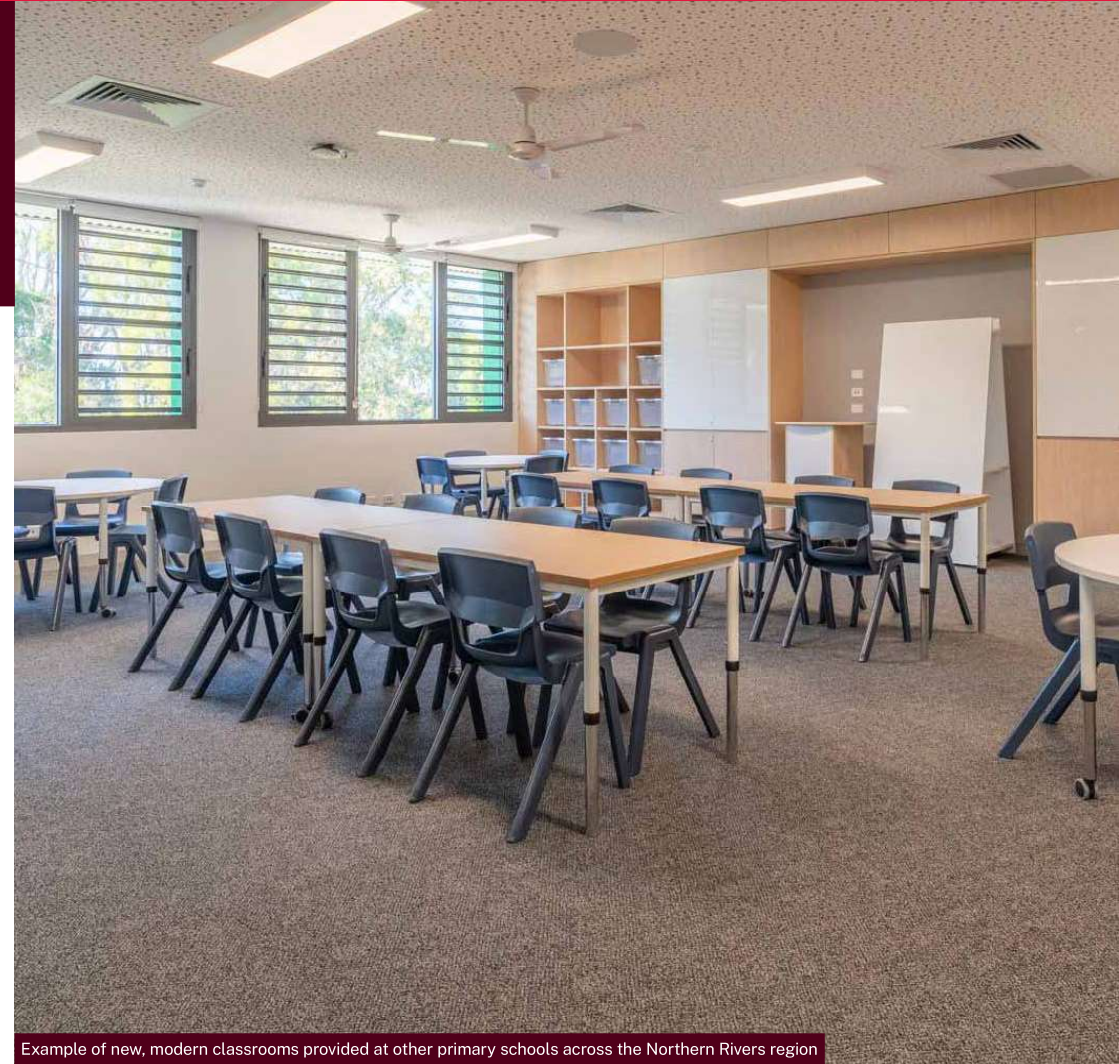
new canteen



new permanent facilities for specialist support classes



removal of demountable buildings



Example of new, modern classrooms provided at other primary schools across the Northern Rivers region

## Murwillumbah East Public School

For more information

Phone: 1300 482 651

Email: [schoolinfrastructure@det.nsw.edu.au](mailto:schoolinfrastructure@det.nsw.edu.au)

Website: [schoolinfrastructure.nsw.gov.au](http://schoolinfrastructure.nsw.gov.au)



# How we build schools

When designing new schools or school upgrades, we are guided by the NSW Education Facilities Standards and Guidelines (EFSG). The EFSG are based on years of educational research and engineering expertise.

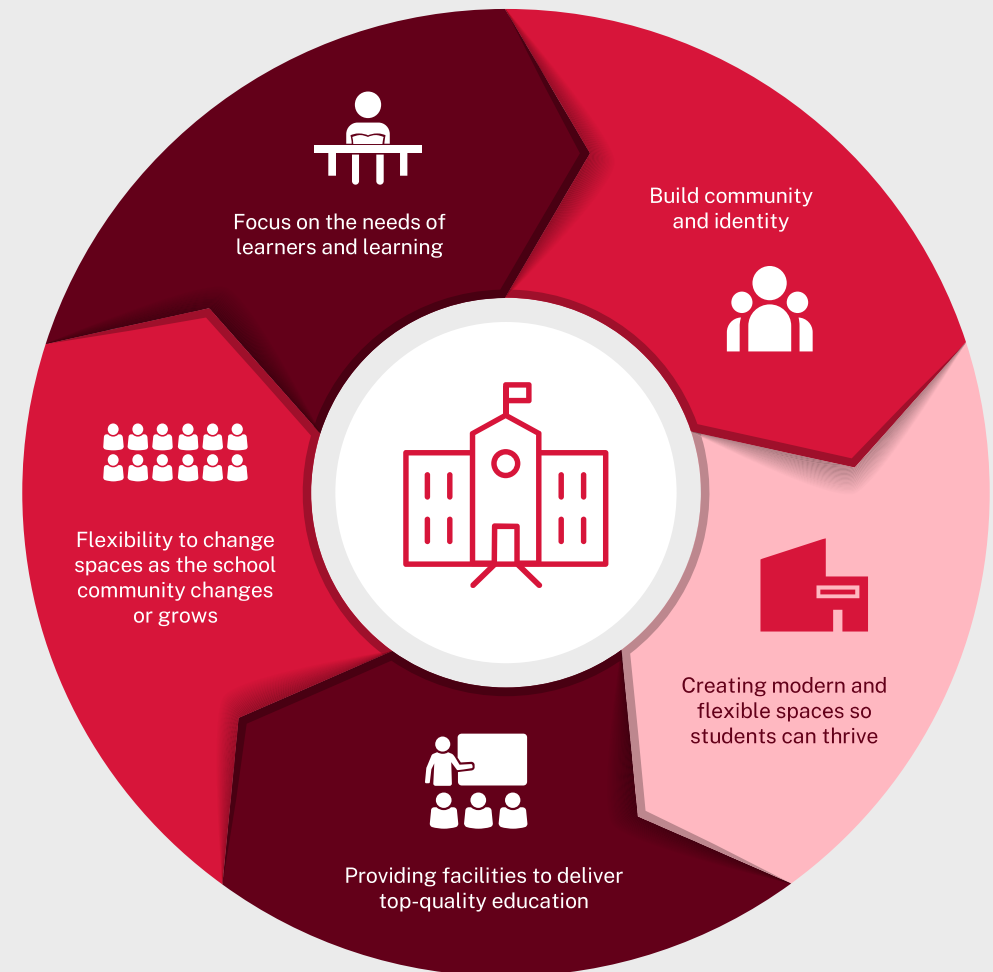
They have been developed to ensure we design and deliver the very best learning environments that support our teachers and meet the learning needs of all our students now and into the future.

These guidelines are essential in delivering more uniform, school designs and quality learning environments that:

- are safe, functional, and adaptable
- meet the learning needs of all our students
- support those with disabilities
- are fit for purpose to deliver the curriculum
- meet and comply with all NSW legal and policy requirements
- use resources sustainably to minimise their impact on the local environment
- deliver value for money and reduce long term maintenance costs.

## Learn more

Take a look at some of the upgrades we have delivered and see how these varied spaces support teaching and learning. Visit [edu.nsw.link/SchoolShowcase](https://edu.nsw.link/SchoolShowcase) or scan the QR code.



### For more information

Phone: 1300 482 651

Email: [schoolinfrastructure@det.nsw.edu.au](mailto:schoolinfrastructure@det.nsw.edu.au)

Website: [schoolinfrastructure.nsw.gov.au](https://schoolinfrastructure.nsw.gov.au)

# Design approach

## Standard starting point

To keep up with changing ways of learning and build schools more efficiently, we have adopted forward-thinking, standardised designs for new schools and upgrades.

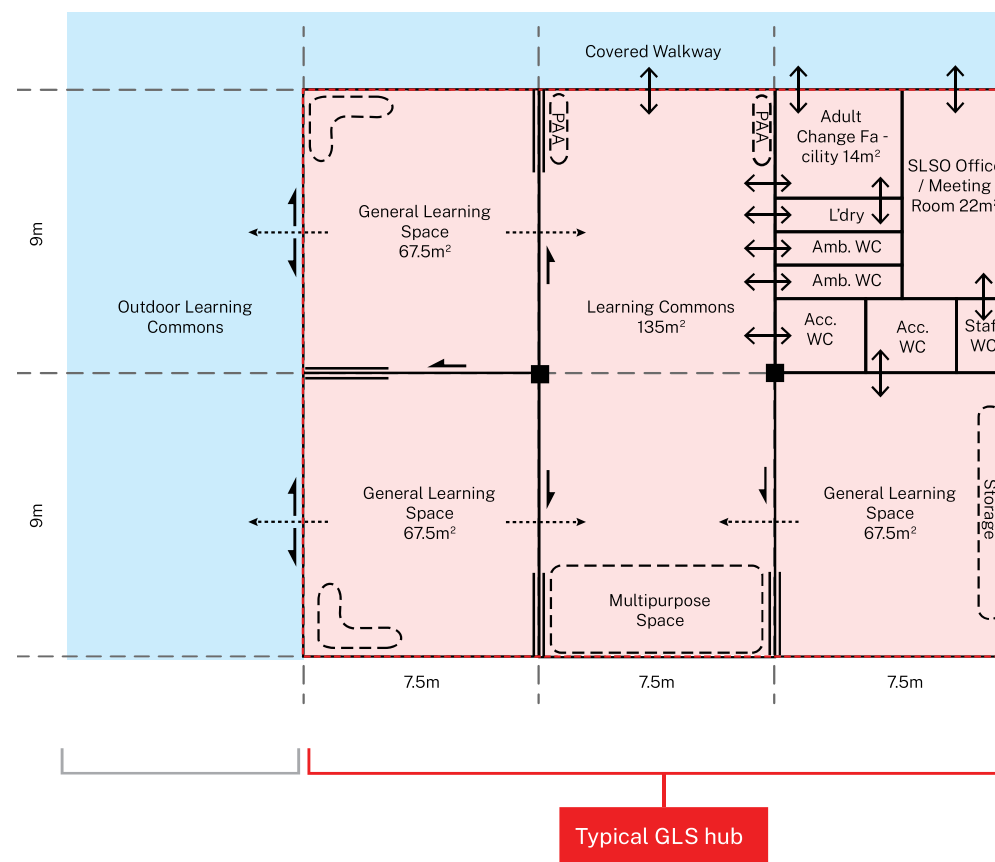
These include a range of building types, layouts and floor plans which help reduce unnecessary complexity, lead to better value for public money, and make sure students across NSW get access to the same high-quality facilities and learning environments, no matter where they live.

## Adapted to local needs

As each school is unique, standardised designs offer flexibility and can be modified to suit local needs.

## Developed with education experts

Our standardised designs have been developed in consultation with the department's educational experts and teachers to ensure they meet learning and teaching objectives as well as the department's *Education Facilities Standards and Guidelines (EFSG)* and the *State Environmental Planning Policy for Educational Establishments and Childcare Facilities, 2017*.



Standard hub layout for facilities for specialist support classes

## Murwillumbah East Public School

**For more information**

**Phone:** 1300 482 651

**Email:** [schoolinfrastructure@det.nsw.edu.au](mailto:schoolinfrastructure@det.nsw.edu.au)

**Website:** [schoolinfrastructure.nsw.gov.au](http://schoolinfrastructure.nsw.gov.au)



# What new facilities look like



**For more information**  
Phone: 1300 482 651  
Email: [schoolinfrastructure@det.nsw.edu.au](mailto:schoolinfrastructure@det.nsw.edu.au)  
Website: [schoolinfrastructure.nsw.gov.au](http://schoolinfrastructure.nsw.gov.au)

# What new facilities look like



Aerial view of Broadwater Public School, rebuilt after it was significantly damaged in the 2022 flooding event



Exterior of Broadwater Public School, showing elevation of the building above predicted flood levels



Undercroft area at Wardell Public School, used for undercover play



Exterior of Empire Vale Public School



**For more information**  
Phone: 1300 482 651  
Email: [schoolinfrastructure@det.nsw.edu.au](mailto:schoolinfrastructure@det.nsw.edu.au)  
Website: [schoolinfrastructure.nsw.gov.au](http://schoolinfrastructure.nsw.gov.au)