



Artist impression of the new Murrumbidgee High School learning resource centre (Wade site)

## Murrumbidgee Regional High School – Wade site

Project update

September 2019

### Investing in our schools

The NSW Government is investing \$6.7 billion over the next four years to deliver 190 new and upgraded schools to support communities across NSW. In addition, a record \$1.3 billion is being spent on school maintenance over five years. This is the largest investment in public education infrastructure in the history of NSW.

### Upcoming works

Upcoming early works will soon commence at both the Griffith and Wade sites of Murrumbidgee Regional High School. These early works will occur from the September/October 2019 school holidays through to early December.

Early works at the Wade site will include:

- Site establishment, including installation of site fencing, site sheds and access points
- Relocation of classrooms in Building L1 into temporary demountables
- Relocation of the canteen from Building S into a temporary demountable
- Demolition works of Buildings S and L1, and removal of contaminated material.

Vehicle and pedestrian access arrangements for the Wade site will not change.

The construction site will be fenced and signed, with physical and visual separation of the construction area from the school grounds. Students and staff are prohibited from entering the construction site.

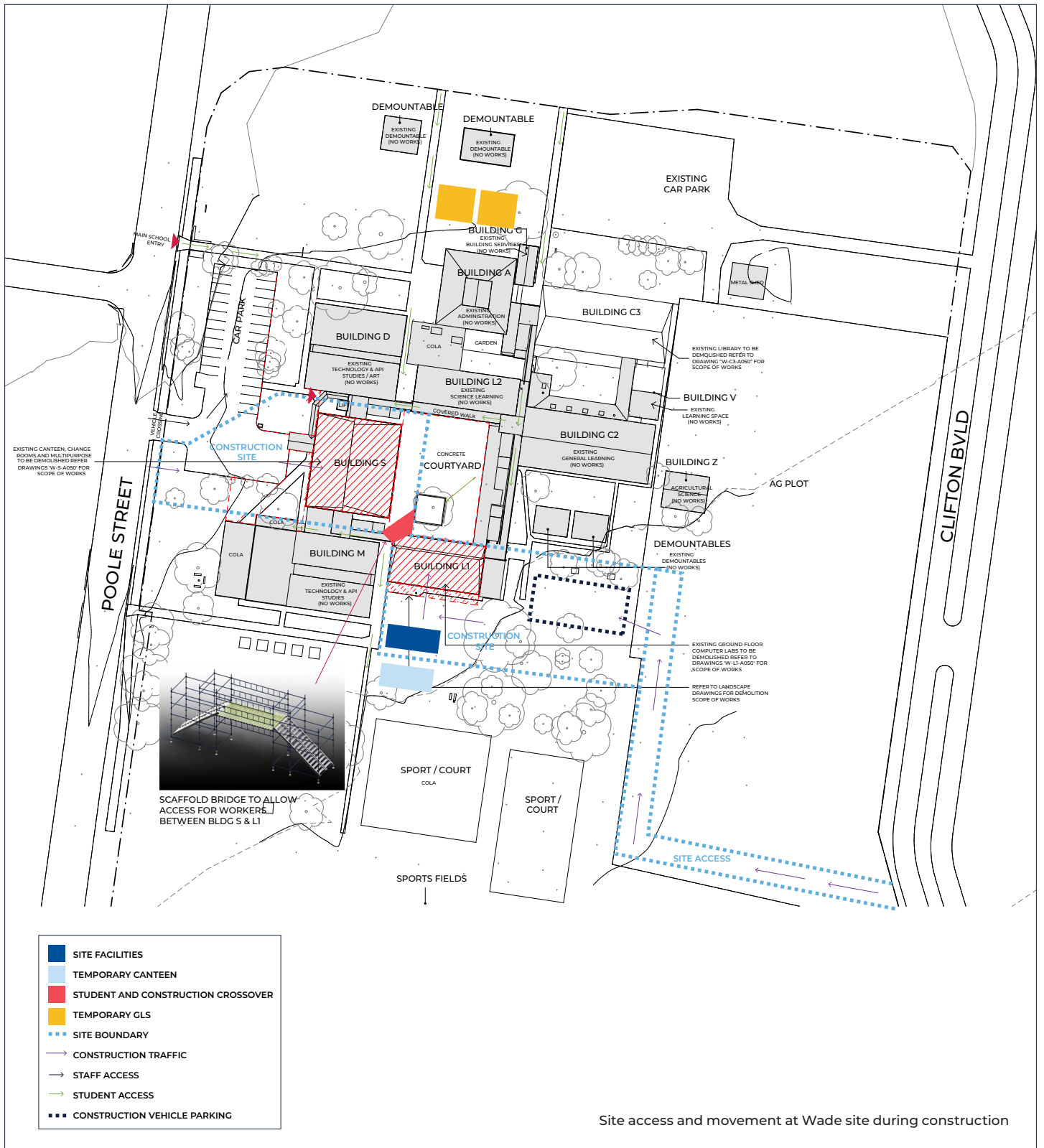
We are here to make sure that work is completed safely and efficiently and we will minimise impacts on the school and community at every opportunity, including working around HSC exam times to avoid causing any noise disturbance during exams. Construction traffic will be managed according to a traffic management plan and construction related vehicles are directed to park on-site at Wade.

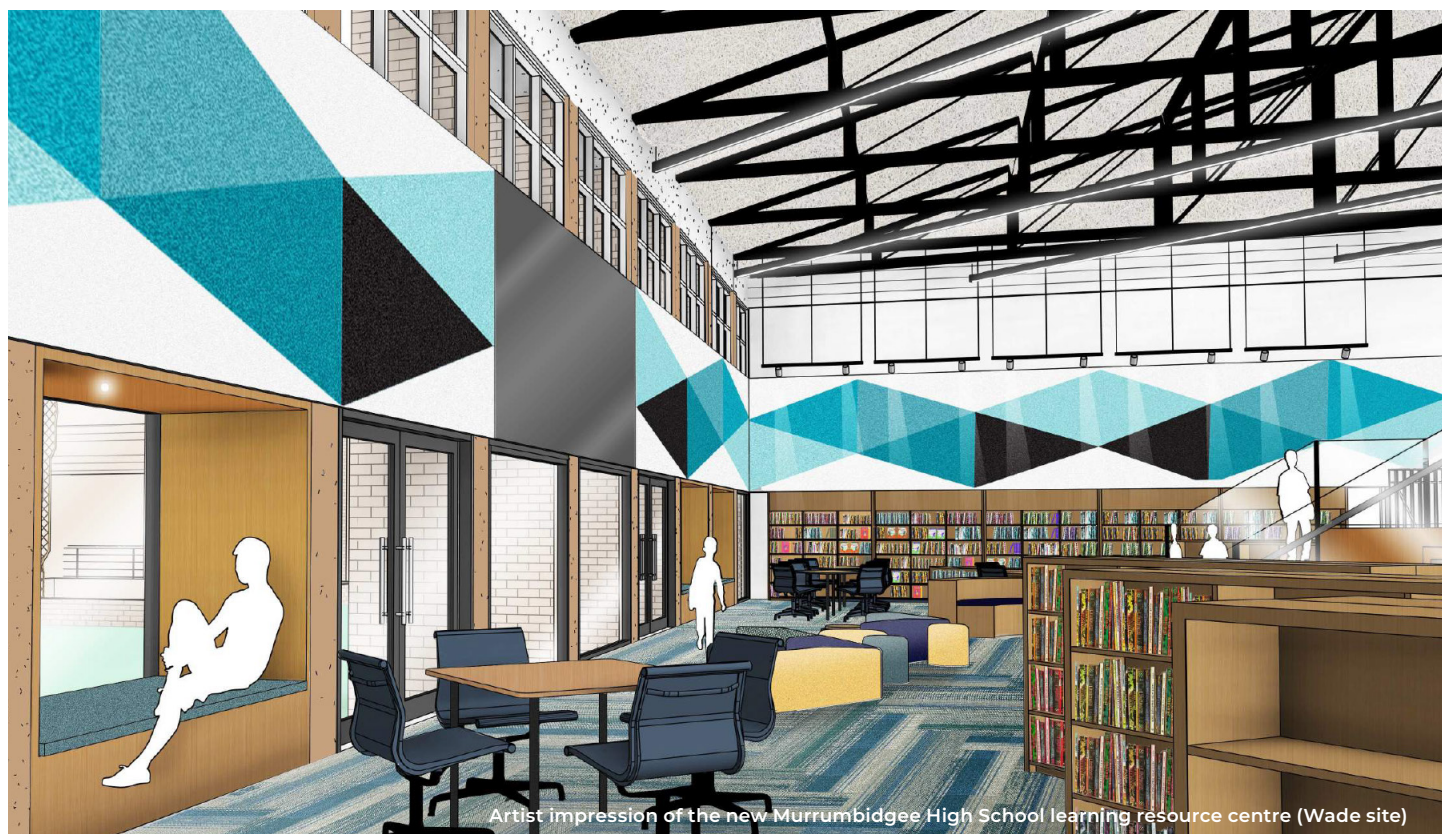
### Removal of contaminated material

The upcoming work will involve removing non-friable (bonded) asbestos from the site. Safety measures have been put in place to ensure there is no risk to students, staff or the local community.

Contaminated material will be removed by a licensed asbestos removal contractor outside of school hours. The works will be conducted in accordance with the Department of Education's Asbestos Management Plan and Safe Work NSW requirements including the following precautionary measures:

- Isolation of the work area
- Monitoring, testing and clearance certification by a consultant hygienist.





Artist impression of the new Murrumbidgee High School learning resource centre (Wade site)

## Frequently asked questions

### **As a lot of the school will be out of bounds during construction, will there be enough classrooms and playground space available?**

Yes. We have installed temporary demountables at both sites to ensure there will be enough classrooms available for all classes to run as normal during the construction period. We have worked with the contractor to ensure the absolute minimum of playground space is impacted during construction.

### **My child walks/ rides their bike to school, will it still be safe for them to do this?**

Students are still encouraged to walk or ride their bikes to school. All construction traffic will be managed according to a traffic management plan which aims to minimise overlap with student or staff pedestrian access or pathways.

### **Will the temporary demountables be accessible?**

Yes. All temporary demountable classrooms, the canteen demountable at the Wade site and the administration demountable at the Griffith site have been installed with ramps to facilitate accessibility for all staff, students and visitors. They will be fully DDA compliant.

We are here to make sure that work is completed safely and efficiently and we will minimise impacts on the community at every opportunity.

If you have any queries relating to these works, please contact School Infrastructure NSW using the contact information below.

#### **For more information contact:**

School Infrastructure NSW  
Email: [schoolinfrastructure@det.nsw.edu.au](mailto:schoolinfrastructure@det.nsw.edu.au)  
Phone: 1300 482 651  
[www.schoolinfrastructure.nsw.gov.au](http://www.schoolinfrastructure.nsw.gov.au)