

PURCELL

MOSMAN HIGH SCHOOL
745 MILITARY ROAD, MOSMAN, 2088
PHOTOGRAPHIC ARCHIVAL RECORD

PREPARED FOR MULTIPLEX

DECEMBER 2021

DRAFT ISSUE

Author	Date	Revision	By	Checked
PURCELL	02/12/2021	Draft for Client Review	LM / HM	TS
Office 25, The Commons Central, 20-40 Meagher Street, Chippendale, NSW 2008 Australia	03/12/2021	Final Issue	LM / HM	TS
tracey.skovronek@purcellau.com +61 415 423 497				
www.purcellap.com				

All rights in this work are reserved. No part of this work may be reproduced, stored, or transmitted in any form or by any means (including without limitation by photocopying or placing on a website) without the prior permission in writing of Purcell except in accordance with the provisions of the Copyright (Moral Rights) Act 2000. Applications for permission to reproduce any part of this work should be addressed to Purcell at info@purcellau.com.

Undertaking any unauthorised act in relation to this work may result in a civil claim for damages and/or criminal prosecution. Any materials used in this work which are subject to third party copyright have been reproduced under licence from the copyright owner except in the case of works of unknown authorship as defined by the Copyright (Moral Rights) Act 2000. Any person wishing to assert rights in relation to works which have been reproduced as works of unknown authorship should contact Purcell at info@purcellau.com.

Purcell asserts its moral rights to be identified as the author of this work under the Copyright (Moral Rights) Act 2000.

Purcell® is the trading name of Purcell Asia Pacific.

ABN: 23 609 207 301

Nominated Architect:
Tracey Skovronek
ARN NSW 11029

© Purcell 2021

CONTENTS

INTRODUCTION	I
Acknowledgment of Country	I
Background	I
Methodology	I
Limitations	I
References	I
UNDERSTANDING THE SITE	2
Location	2
Building Identification	2
Historical Summary	2
Statutory Listings And Overview Of Significance	5
Non-Statutory Listings	5
PHOTOGRAPHIC DOCUMENTATION	6
Camera And Lens Specifications	6
Image Format	6
Photographic Catalogue	6
Distribution	6
APPENDICES	7
Appendix 1 Plan Sheets	7
Appendix 2 Catalogue Sheets	8
Appendix 3 Thumbnail Image Sheets	9
Appendix 4 Selection Of Photographs	10
Appendix 5 Historical Images and Documents	11

INTRODUCTION

ACKNOWLEDGMENT OF COUNTRY

Purcell acknowledge the Borogegal and Cammeraigal peoples, of the Eora nation who are the original and current inhabitants, the traditional owners and custodians of this land.

BACKGROUND

Multiplex commissioned Purcell to prepare this Photographic Archival Record (PAR) of Mosman High School, 745 Military Road, Mosman (the Place). This PAR is required by Development Consent Condition B.10 (see below) prior to works commencing to demolish Buildings B, and C, and construct a new facility with increased capacity to support the growth of the school.¹

Development Consent Condition B10.

B.10 Prior to the commencement of demolition of Buildings B and C, a photographic archival record of the external and internal areas of Buildings B and C and all other items of heritage significance on the site identified in the Heritage Impact Statement prepared by Purcell and dated 30 March 2021 must be prepared in accordance with the NSW Heritage Branch guidelines titled Photographic Recording of Heritage Items using Film or Digital Capture. A digital copy must be submitted to Council and any relevant local studies collection in the locality and the Planning Secretary prior to the commencement of demolition works.²

Linda Mott, Assistant Heritage Consultant of Purcell prepared this report with oversight by Tracey Skovronek, Regional Partner of Purcell. Hanna Morgan, Heritage Specialist of Purcell undertook the Photographic survey on 22 November 2021.

METHODOLOGY

This report follows the guidelines in the NSW Heritage Office publication:

- L Greenup, 'Photographic Recording of Heritage Items using Film or Digital Capture', Heritage Office, 2006

Each photograph has been allocated a unique name/number (refer to Appendix 2). The name/numbers are cross referenced to the Plan and Catalogue Sheets (refer to Appendix 1 and Appendix 2 respectively). The Plan Sheets indicates the location, order and direction of the photographs. Catalogue Sheets record the project details, date, photographer's name, camera type and lenses used, photographic data, direction, and brief description of each photograph.

LIMITATIONS

This PAR will be limited to features affected by the Proposal, as required by Development Consent Condition B.10: the external and internal areas of Buildings B and C and all other items of heritage significance on the site identified in the Heritage Impact Statement prepared by Purcell and dated 30 March 2021.

The historical summary provides sufficient historical background to understand the history of the Place and is not intended as an exhaustive or definitive Site history. The historical images and drawings included at Appendix 5 were provided by Multiplex.

REFERENCES

This PAR references the following documents:

- NSW Heritage Office, 'How to prepare Archival Records of Heritage Items', NSW Heritage Office, 1998.
- L Greenup, 'Photographic Recording of Heritage Items using Film or Digital Capture', NSW Heritage Office, 2006.
- Purcell, 'Mosman High School, 745 Military Road, Mosman, Heritage Impact Statement', prepared for SINSW, October 2021.
- Heritage NSW, 'State Heritage Inventory' (SHI), [Website], Version 1.1.0.6

1 Purcell, 'Mosman High School, 745 Military Road, Mosman, Heritage Impact Statement', prepared for SINSW, October 2021.

2 NSW Government Department of Planning, Industry and Environment, Development Consent, Section 4.38 of the *Environmental Planning and Assessment Act 1979*, Application Number: SSD-10465n, 6/8/2021.

UNDERSTANDING THE PLACE

LOCATION

Mosman High School is located at 745 Military Road, Mosman NSW 2088 (Lot: 1 DP: 1268793). The site within the Mosman Municipal Council Local Government Area (LGA) and occupies an entire block bounded by Military, Belmont, and Avenue Roads, and Gladstone Avenue, Mosman.



Figure 1 - Aerial view of the Place, the approximate site boundary outlined in blue dashes. (Source: SIX Maps, modified by Purcell)

BUILDING IDENTIFICATION

Mosman High School consists of five major buildings which illustrate the history of its growth and development:

BLOCK	DATE	DESCRIPTION
A	1904	Classroom Block
B	1962	Science Block, Gymnasium and Administration
C	1926	Domestic Science Block
D	1926	Public School Building
E	1987	Administration and Multipurpose Space

HISTORICAL SUMMARY

The following history for Mosman High School was extracted from the SHI Database:

The history of Mosman High School extends back to the establishment of Mosman Public School at the end of the 1870s. In March 1879 a committee of local residents at what was known as Mosman's Bay applied to the Council of Education for the establishment of a school in the locality. The request was approved and during December 1879 the Council entered into an agreement to purchase land off landowner, developer and property speculator Richard Hamett. However, in February 1880 Hamett offered the Council rental of a house on Military Road, opposite the future school site, and the school finally occupied the premises the following October. Following this a permanent site was soon selected.

Mosman High School (and before that Mosman Public School) is situated on part of a 30 acre (12.14 hectare) grant of land made to Mosman in 1838. This initial portion of the school site was acquired after the title to about 1 ½ acres (0.607 hectares) of land was transferred to the Crown by Richard Hamett, and his business partner Alexander Stuart on 20 June 1882. Hamett, who acquired land owned by Mosman from 1859, had purchased Mosman's 30 acre grant off Mitchell Boyd in February 1876 while Boyd had acquired it about ten years earlier, in June 1866.

In January 1883 the construction of a stone school house and teacher's residence

UNDERSTANDING THE PLACE

commenced on the site. The work was undertaken by contractor J W Eaton. To deal with growing numbers of pupils, additions were made to the building in 1888-89, 1892 and 1897. The school became officially known as Mosman Public School in March 1894. Following recommendations in 1899 that separate boys' and girls' departments be established a further addition to provide a classroom for girls was undertaken and officially opened on 14 August 1901.

In 1903 the school's status was upgraded when it became a Superior Public School, abetted by the efforts of the Mosman Progress Association. At the beginning of June that year a library was formally opened at the school. This was followed by the opening of the first stage of a projected four-wing building, for which tenders for construction had been accepted during October 1903. The building was completed in the middle of September 1904 and situated on the corner of Military and Avenue Roads, despite appeals from the local community to relocate the school on a site away from the risks associated with dangerous local traffic on Military Road. The two-storey building contained three long classrooms on each level, each separated into two sections by glazing along with long single-loaded corridors on one side that served as picture galleries. The other three wings were not completed, but around this time an infants' department was formed. It was housed in a temporary five-room timber building. The tender of contractors Grace & Boulton for its construction was accepted in March 1906 and the building was completed the following June.

Two portable classrooms were relocated from schools at Crows Nest and North Sydney to Mosman in 1912. In the middle of that year an "indignation meeting" was held in Mosman Town Hall in response to the Department of Public Instruction's unsatisfactory ongoing refusal to address grievances about overcrowding and the deficiencies of the school site. A deputation met with the Minister for Education the following September, who rebutted its suggestions. However, at the beginning of 1913 the status of the school was upgraded to that of a Superior Public School, with a Domestic Science Department and Commercial Department offering secondary education.

By April 1913 plans were well underway for a new infants' school building and the following October the Minister approved the resumption of land in Belmont Road to the west of the Public School for the site of the new school. In February 1914 the site was acquired, the contract for the building's construction was let in June 1914 and the completed two-storey building was officially opened in June 1915.

The school became an Intermediate High School in 1921, offering primary and secondary classes with an academic course of instruction to Intermediate Certificate standard. Over an acre of land along Belmont Road and Gladstone Avenue was resumed during 1923. The land was part of the Model Township subdivided and partly developed by bank manager Arthur Muston at the end of the 1880s. Sales were slow, so in 1893 Muston started auctioning off unsold allotments. The allotments that were subsequently resumed were sold at various times between 1889 and 1894 and were developed with a mix of detached and semi-detached residences. The resumed land was to provide a site for a large new school building, part of a large scheme that included two new buildings.

The foundation stone of the new building was laid on 13 February 1925 by the Minister of Education. The entire scheme was comprehensive in scope, containing 28 classrooms and administration spaces along with a separate domestic and manual training block, and two weather sheds with attached lavatories. The buildings were designed in the Government Architect's Office, built by G Hogden, and was officially opened by the Minister for Education on 17 July 1926. The following description was published in the Sydney Morning Herald:

"The main school building is carried out in brick on concrete footings, and the main roofs are covered with improved French pattern tiles, with a mottled effect. The elevational treatment is simple and effective. It consists of a brick base with roughcast walling over. The latter are broken up with simple pilaster treatment, the pilasters being in roughcast. Special attention has been given to lighting, heating, and ventilation, and an attractive column stands at the entrance to each of the three porches. Each column, which is ornamental and serviceable, is surmounted by a large electric light globe."

"The domestic science and manual training block is a two-storey building of brick on concrete footings, and with tiled roof. Externally the walls are rough casted from the first-floor window sills upward. The ground floor contains a model kitchen and laundry, a manual training-room, and offices; while on the first floor are situated a demonstration room, science room and preparation room. There are model bedrooms, sitting-rooms, and bathrooms. The laundry contains four set-in tubs and an ironing table, with three points. In the kitchen are two gas stoves of white enamel, and also a gas copper. The manual training-room is fitted with benches, lockers, and timber racks, and in every respect the science and manual training block is fitted up as an admirable centre for both boys and girls, and as a feeder for the Technical College."

UNDERSTANDING THE PLACE

In addition to the features described in the Sydney Morning Herald, the main school building incorporated separate assembly areas for boys and girls within the ground and first floor verandahs, separate male and female staff areas, and classrooms that were linked by bi-folding sets of doors. Boys occupied the southern half of the school, girls the northern half. The building was considered to be the largest public school building in NSW at that time. The construction of the imposing new building coincided with a high point in enrolments. In 1925 there were 2,053 pupils attending the school (868 boys, 641 girls and 558 infants).

Mosman Public School became a Public School and Boys' Intermediate High School during 1938. In August 1960 the Department of Education announced that the Mosman Home Science School and the Boys' Intermediate High School were to be amalgamated to form the co-educational Mosman High School, which was established in January 1961.

At the beginning of 1962 a new two-storey science block on the Military Road side of the site was documented in the Government Architect's Branch. It included a gymnasium and covered open space on the ground floor and teaching spaces on the first floor. The construction of the building necessitated the demolition of the 1880s teacher's residence. Extensive internal modifications were documented to the 1926 Public School building in 1970, which provided more staff and pupil facilities, the loss of the first floor assembly spaces. About three years later part of the first floor of the building was

converted to a library. These works were accompanied by the construction of a multi-purpose hall on another part of the site, which was documented in 1972.

Internal modifications to the 1904 building were documented during 1985, adapting it for use as an art learning block. This was followed by the design and construction of a large teaching block near Avenue Road (Building E), plans for which were prepared by architects Jackson Teece in 1987. The following year alterations and additions were documented for the science block (Building B). Plans were also prepared for major modifications to the domestic science block (Building C) and further alterations to the 1920s Public School. Schwager Brooks were consulting architects for these works. The building program was completed in 1992.³

³ Heritage NSW, SHI, [SHR No: 5065612](#), accessed 30/11/2021

UNDERSTANDING THE PLACE

STATUTORY LISTINGS AND OVERVIEW OF SIGNIFICANCE

The Place is not listed under the *Heritage Act 1977* (NSW) on the State Heritage Register, although it is included on the s.170 NSW State agency heritage register, as being of Local Significance. The Place is also listed under the *Mosman Local Environmental Plan 2012*,⁴ as being of Local Significance.

S170 NSW STATE AGENCY HERITAGE REGISTER

The Place is included on the SINSW s170 Register as 'Mosman High School - Buildings B00A and B00D'. The S170 register includes Buildings A and D.⁵

The S170 Statement of Significance for Mosman High School - Buildings B00A and B00D is:

Mosman High School provides evidence of the growth and consolidation of the locality during the first third of the twentieth century, demonstrated by the buildings constructed during the 1900s and 1920s.

They are associated with James Sven Wigram, Department of Public Instruction's Chief Architect for Schools (Building B00A, 1904) and Colonel Richard McDonald Seymour Wells, Education Department Architect for Public Schools (Building B00D, 1926). Building B00A is a fine and noteworthy example of the Federation Arts and Crafts style, while Building B00D is a fine example of an Inter War Free Classical style school building, distinguished by its scale and architectural composition. It was reputedly the largest public school building in NSW when completed. Buildings B00A and B00D are important components of the townscape in this section of Mosman.

Mosman High School is likely to have social significance for the local community, including former particularly to ex-pupils, their families, and former teachers and staff.

MOSMAN LOCAL ENVIRONMENTAL PLAN 2015, SCHEDULE 5

The Place is included on the *Mosman Local Environmental Plan 2015*, (LEP) Schedule 5 Environmental Heritage as 'Mosman High School, group of 2 buildings' (Item No: 116) and is of Local Significance. Part of the Military Road frontage is within the Military Road Conservation Area (HCA No 7).⁶

The LEP Statement of Significance for the Place Name (from the SHI online Database) is:

These two buildings, the most significant of the complex of structures comprising the High School, are substantial evidence of the development of community services from the turn of the century into the prosperous Inter-War years, when Mosman's population was rapidly increasing as a result of intensive residential development. Both are fine buildings typifying the high quality architectural output of the Government Architect's Branch. Building A forms an important part of the Military Road Conservation Area, while Building D is a large-scaled and significant element in the Gladstone Streetscape and impressively closes the vista up the slope of Keston Avenue towards Gladstone Avenue. Both feature attractive detailing lending visual interest to the streetscape.⁷

NON-STATUTORY LISTINGS

The Place is not included on the Register of the National Estate (non-statutory archive)⁸

⁴ Schedule 5 Environmental Heritage, Part 1 Heritage Items (Item No)
⁵ Heritage NSW, [SHI](#), (Heritage Item ID 5065612), accessed 30/11/2021
⁶ Heritage NSW, [SHI](#), (Heritage Item ID 5065612), accessed 30/11/2021

⁷ Heritage NSW, [SHI](#), (Heritage Item ID 2060277), accessed 30/11/2021
⁸ Australian Heritage Database, 'Legal status and heritage place lists', [website], accessed 13 October 2021.

PHOTOGRAPHIC DOCUMENTATION

CAMERA AND LENS SPECIFICATIONS

The photographs that form this PAR were taken with a 35mm camera digital equivalent, meeting the requirements of the NSW Heritage Office Guidelines for Photographic Recordings. The camera and lens specifications are as follows:

Camera Panasonic Lumix GX85 Digital SLR (16.84 Megapixel)

Lens 12-32mm (35mm camera equivalent 24-64mm)

IMAGE FORMAT

The photographs were taken at 18 megapixels in RAW format and converted to high resolution JPG format (approx. 3MB to 6MB each), in accordance with the NSW Heritage Office Guidelines for Archival and Photographic Recordings. The digital copies of this PAR comprise each photograph in both RAW and TIFF format, as well as thumbnail sheets with reference numbers.

PHOTOGRAPHIC CATALOGUE

This PAR comprises the following sections, consistent with the NSW Heritage Office Guidelines:

- Plan Sheets – documenting the location and orientation of each photograph using arrowed markers (Appendix 1);
- Catalogue Sheets – comprising detailed descriptions of each photograph, orientation of photographs and cross-references to both plan sheets and thumbnail images (Appendix 2);
- Thumbnail Sheets – comprising a thumbnail of each photograph and reference numbers (Appendix 3);
- Selection of Photographs – comprising a selection of photographs that capture the Station and setting (Appendix 4), and;
- Historical Images and Drawings – original and early images and drawings of the buildings provided by the Transport for NSW (Appendix 5).

DISTRIBUTION

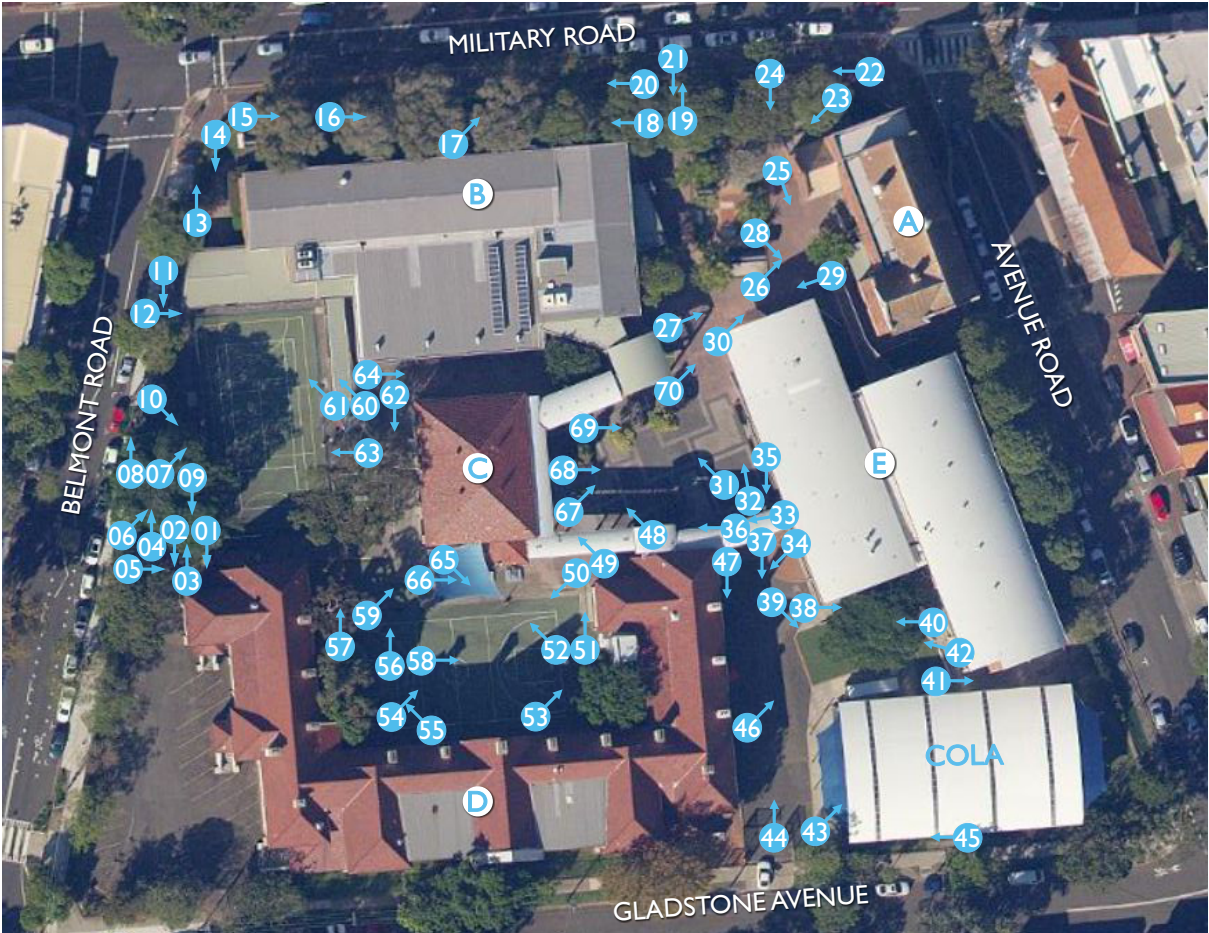
SINSW will receive two digital copies of this PAR for distribution to the Planning Secretary and the Local Council.

APPENDICES

APPENDIX I PLAN SHEETS



<div>Notes:</div> <div>This Plan sheet is a satellite image from <u>SIX Maps</u>. It may not accurately represent what is physically present.</div> <div>Do not scale from this drawing.</div>		<div>JOB NUMBER</div> <div>240426</div>	<div>PROJECT</div> <div>MOSMAN HIGH SCHOOL</div>	<div>SIZE SCALE</div> <div>A4L NTS</div>	<div>Drawing Source</div> <div>DesignInc modified by Purcell</div>	
		<div>TITLE</div> <div>PHOTOGRAPHIC ARCHIVAL RECORDING - VIEWS</div>		<div>Drawing Number</div> <div>100 VIEWS</div>		

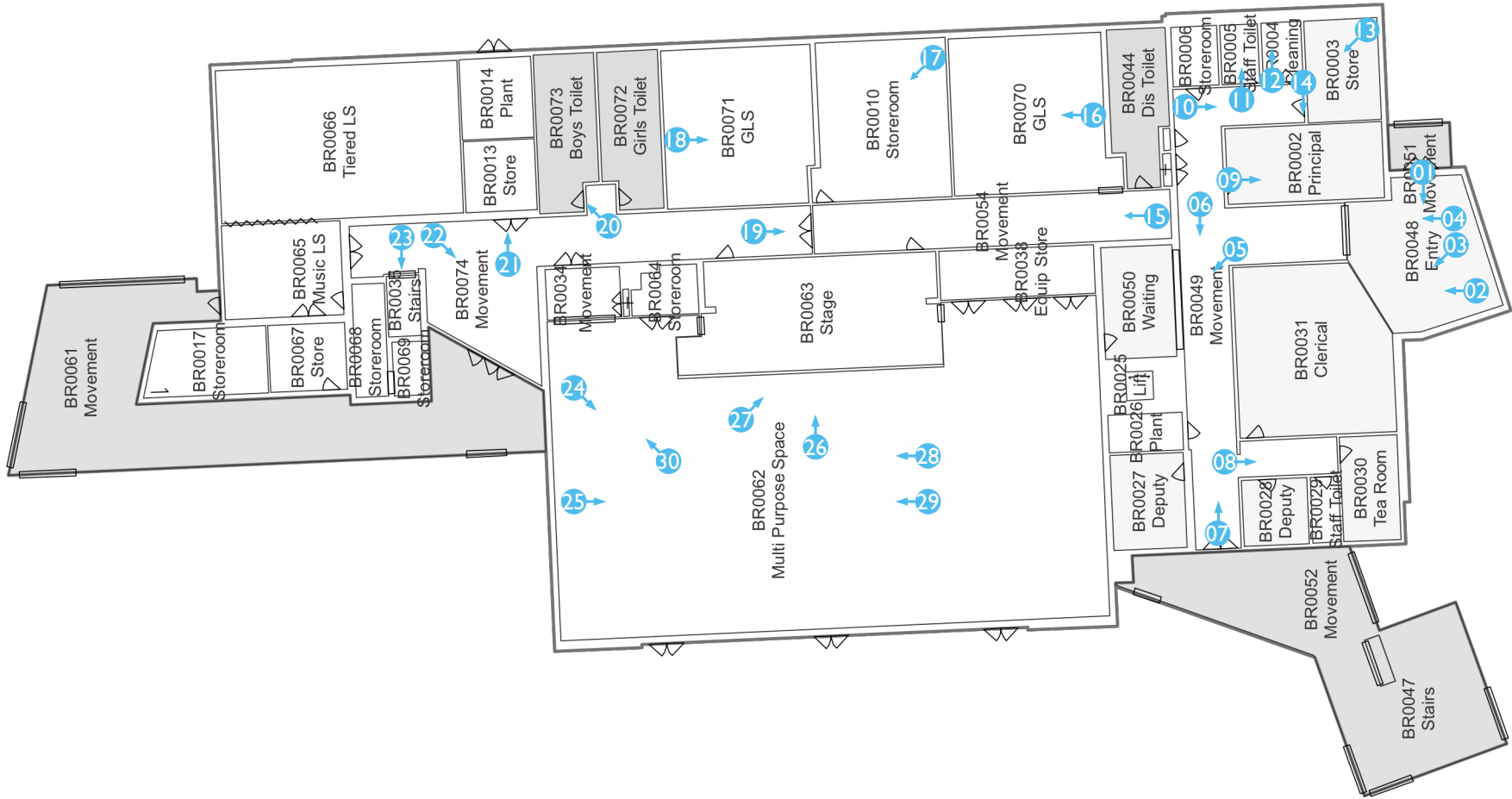


BLOCK	DATE	DESCRIPTION
A	1904	Classroom Block
B	1962	Science Block, Gymnasium and Administration
C	1926	Domestic Science Block
D	1926	Public School Building
E	1987	Administration and Multipurpose Space

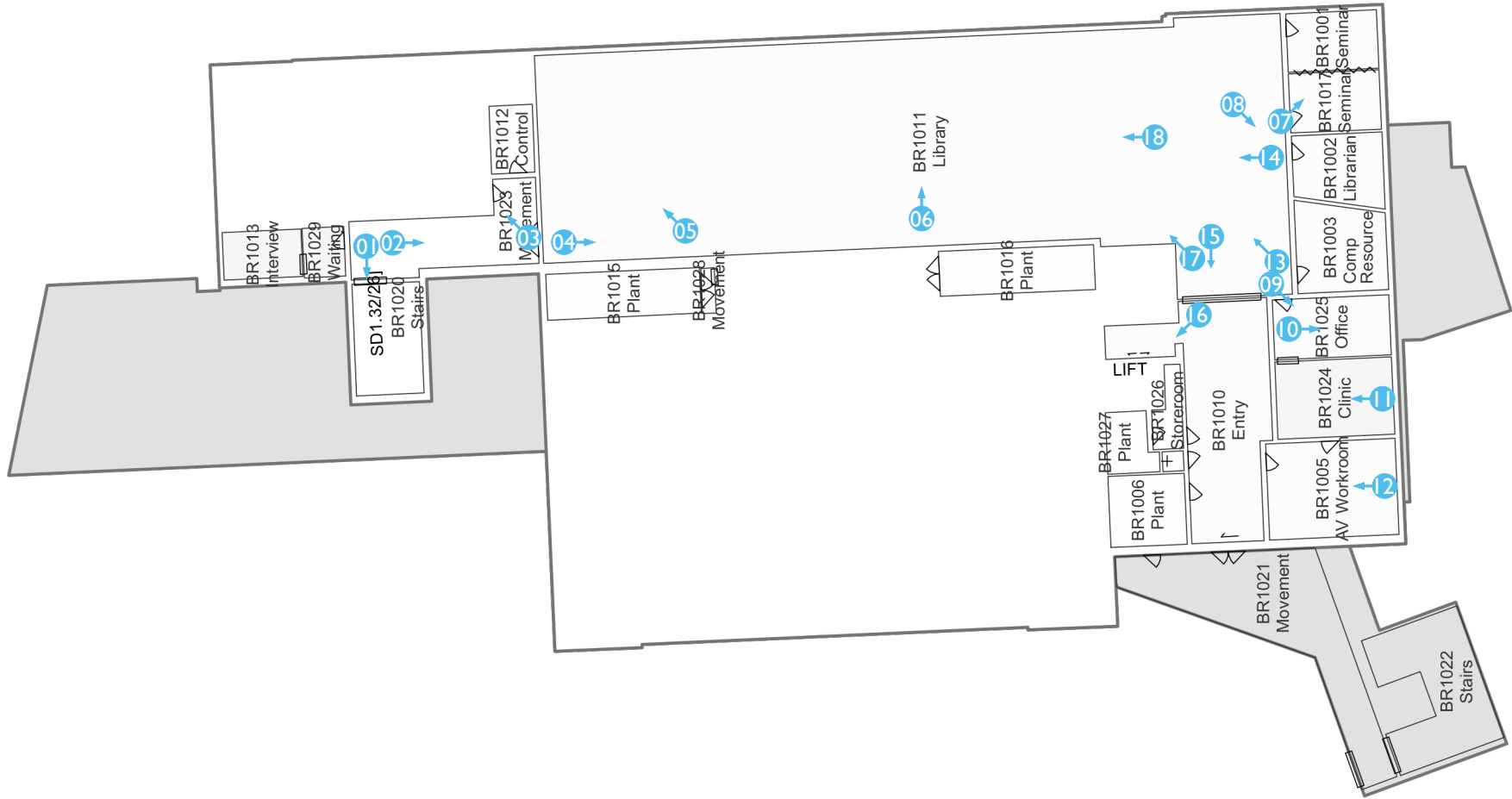
<div>Notes:</div> <div>This Plan sheet is a satellite image from <u>SIX Maps</u>. It may not accurately represent what is physically present.</div> <div>Do not scale from this drawing.</div>		<div>JOB NUMBER</div> <div>240426</div>	<div>PROJECT</div> <div>MOSMAN HIGH SCHOOL</div>	<div>SIZE SCALE</div> <div>A4L NTS</div>	<div>Drawing Source</div> <div>DesignInc modified by Purcell</div>	
		<div>TITLE</div> <div>PHOTOGRAPHIC ARCHIVAL RECORDING - SITE</div>		<div>Drawing Number</div> <div>101 SITE</div>		



<div>Notes:</div> <div>This Plan sheet is a satellite image from <u>SIX Maps</u>. It may not accurately represent what is physically present.</div> <div>Do not scale from this drawing.</div>	<div><div>N</div><div></div></div>	<div>JOB NUMBER</div> <div>240426</div>	<div>PROJECT</div> <div>MOSMAN HIGH SCHOOL</div>	<div>SIZE SCALE</div> <div>A4L NTS</div>	<div>Drawing Source</div> <div>DesignInc modified by Purcell</div>	<div></div> <div>PURCELL</div>
		<div>TITLE</div> <div>PHOTOGRAPHIC ARCHIVAL RECORDING - BUILDING B - EXTERIOR</div>		<div>Drawing Number</div> <div>102 BB_EX</div>		



<div>Notes:</div> <div>This Plan sheet is a satellite image from <u>SIX Maps</u>. It may not accurately represent what is physically present.</div> <div>Do not scale from this drawing.</div>	<div><div>N</div><div></div></div>	<div>JOB NUMBER</div> <div>240426</div>	<div>PROJECT</div> <div>MOSMAN HIGH SCHOOL</div>	<div>SIZE</div> <div>A4L</div>	<div>SCALE</div> <div>NTS</div>	<div>Drawing Source</div> <div>DesignInc modified by Purcell</div>	<div><div></div><div>PURCELL</div></div>
		<div>TITLE</div> <div>PHOTOGRAPHIC ARCHIVAL RECORDING - BUILDING B - INTERIOR GROUND FLOOR</div>		<div>Drawing Number</div> <div>103 BB-IN-G</div>			



<div>Notes:</div> <div>This Plan sheet is a satellite image from <u>SIX Maps</u>. It may not accurately represent what is physically present.</div> <div>Do not scale from this drawing.</div>	<div>N</div> <div></div>	<div>JOB NUMBER</div> <div>240426</div>	<div>PROJECT</div> <div>MOSMAN HIGH SCHOOL</div>	<div>SIZE SCALE</div> <div>A4L NTS</div>	<div>Drawing Source</div> <div>DesignInc modified by Purcell</div>	<div></div> <div>PURCELL</div>
		<div>TITLE</div> <div>PHOTOGRAPHIC ARCHIVAL RECORDING - BUILDING B - INTERIOR FIRST FLOOR</div>		<div>Drawing Number</div> <div>104 BB-IN-F</div>		



<div>Notes:</div> <div>This Plan sheet is a satellite image from <i>SIX Maps</i>. It may not accurately represent what is physically present.</div> <div>Do not scale from this drawing.</div>		<div>JOB NUMBER</div> <div>240426</div>	<div>PROJECT</div> <div>MOSMAN HIGH SCHOOL</div>	<div>SIZE SCALE</div> <div>A4L NTS</div>	<div>Drawing Source</div> <div>DesignInc modified by Purcell</div>	
		<div>TITLE</div> <div>PHOTOGRAPHIC ARCHIVAL RECORDING - BUILDING C - EXTERIOR</div>		<div>Drawing Number</div> <div>105 BC-EX</div>		



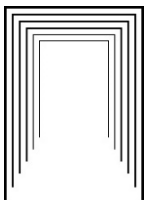
<div>Notes:</div> <div>This Plan sheet is a satellite image from <u>SIX Maps</u>. It may not accurately represent what is physically present.</div> <div>Do not scale from this drawing.</div>		<div>JOB NUMBER</div> <div>240426</div>	<div>PROJECT</div> <div>MOSMAN HIGH SCHOOL</div>	<div>SIZE SCALE</div> <div>A4L NTS</div>	<div>Drawing Source</div> <div>DesignInc modified by Purcell</div>	
		<div>TITLE</div> <div>PHOTOGRAPHIC ARCHIVAL RECORDING - BUILDING C - INTERIOR GROUND FLOOR</div>		<div>Drawing Number</div> <div>106 BC-IN-G</div>		



<div>Notes:</div> <div>This Plan sheet is a satellite image from <u>SIX Maps</u>. It may not accurately represent what is physically present.</div> <div>Do not scale from this drawing.</div>		<div>JOB NUMBER</div> <div>240426</div>	<div>PROJECT</div> <div>MOSMAN HIGH SCHOOL</div>	<div>SIZE SCALE</div> <div>A4L NTS</div>	<div>Drawing Source</div> <div>DesignInc modified by Purcell</div>	
		<div>TITLE</div> <div>PHOTOGRAPHIC ARCHIVAL RECORDING - BUILDING C - INTERIOR FIRST FLOOR</div>		<div>Drawing Number</div> <div>107 BC-IN-F</div>		

APPENDICES

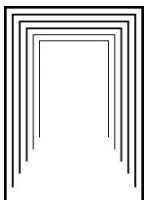
APPENDIX 2 CATALOGUE SHEETS



PURCELL

Project	Mosman High School Photographic Archival Record		
Camera	Panasonic Lumix GX85 12-32mm Lens (35mm camera equivalent 24-64mm)		
Date	22/11/2021	Photographer	Hanna Morgan

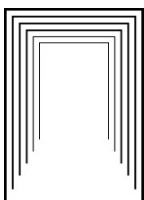
Image No.	View	Description
Views [Plan Reference: 100 Views]		
Views_01	SE	View from Belmont Road south east towards Building D
Views_02	SE	View from Belmont Road south east towards Building D
Views_03	S	View from Belmont Road south along Gladstone Road Building D (left) partially obscured by street trees.
Views_04	S	View from Belmont Road south east towards the car park and Building D
Views_05	S	View from Belmont Road south across the pedestrian crossing to Building D
Views_06	S	View from Belmont Road south to Building C behind the large Ficus microcarpa tree (#22 Birds Tree Consultancy, 'Aboriginal Impact Assessment Report Mosman High School', Revision B, 26 June 2020, pp 52,55)
Views_07	SW	View from Belmont Road south west to Building C and Building D (behind the large Ficus microcarpa tree)
Views_08	SE	View from Belmont Road south east to Building B with Military Road beyond
Views_09	SW	View south along Military Road from in front of 824 Military Road Building B obscured by planting seen distant right
Views_10	SW	View south west to the Military and Belmont Roads intersection, showing the north east corner of Building B
Views_11	SW	View south west to the Military and Belmont Roads intersection, showing the north east corner of Building B, with Building D beyond
Views_12	SW	View south west to the north east corner of Building B, with the historical marker for the prior 1943 Mosman Children's Library
Views_13	SW	View south west from the east side of Military Road, Building B right, Building A left beyond street trees
Views_14	W	View west from the east side of Military Road to the School Entrance, Building A left beyond street trees
Views_15	W	View west from the east side of Military Road to the east end of Building A
Views_16	NW	View north west from the east side of the Military and Avenue Roads intersection, to the south east corner of Building A
Views_17	N	View north west from the east side of the Military and Avenue Roads intersection, the school is obscured by landscape planting
Views_18	N	View north from the south side of Avenue Road to Building A
Views_19	NW	View north west from the south side of Avenue Road to Building A
Views_20	NE	View north east from the south side of Avenue Road to Building A
Views_21	N	View north from the south side of Avenue Road to Building A (right) and Building E (left)
Views_22	NE	View north east from the south side of the Avenue and Gladstone Roads intersection to Building E and COLA
Views_23	N	View north east from the south side of the Avenue and Gladstone Roads intersection along Gladstone Road, COLA (right)
Views_24	E	View east from the south side of Keston Avenue, to the west side of Building D
Views_25	E	View east from the north side of Keston Avenue, to the west side of Building D
Views_26	E	View east from the west side of Gladstone Road at Keston Avenue, to the west side of Building D
Views_27	NE	View north east from the south side of Gladstone Road to the north west corner of Building D



PURCELL

Project	Mosman High School Photographic Archival Record		
Camera	Panasonic Lumix GX85 12-32mm Lens (35mm camera equivalent 24-64mm)		
Date	22/11/2021	Photographer	Hanna Morgan

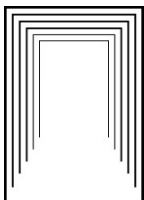
Image No.	View	Description
Views_28	SE	View south east from the west side of Gladstone Road at the carpark entry to the north west corner of Building D
Site [Plan Reference: 101 Site]		
Site_01	W	View west from the northern sports court to Building D and carpark
Site_02	NW	View north west from the northern sports court to Building D and carpark
Site_03	E	View east from the carpark to Building B past the northern sports court (right)
Site_04	E	The large Ficus microcarpa tree (#22 Birds Tree Consultancy, 'Aboricultural Impact Assessment Report Mosman High School', Revision B, 26 June 2020, pp 52,55)
Site_05	S	View south between Building B and the northern sports court to Building C (beyond)
Site_06	SE	View south east from under the large Ficus microcarpa tree to Building B (left) through the northern sports court to Building C (right)
Site_07	SE	View south east from between the northern sports court and boundary fence to Building B through the northern sports court to Building C (right)
Site_08	E	View east from between the northern sports court and boundary fence through the northern sports court (right) and Building B (top right) towards Military Road
Site_09	W	View west from between the northern sports court and boundary fence past the northern sports court (left) to Building D and the car park
Site_10	SW	View south west through the northern sports court to Buildings B (left), and C with Building D beyond
Site_11	W	View west from the Belmont Road boundary fence at the north eastern corner of the sports court to Building D and the car park
Site_12	SW	View south west through the northern sports court to Buildings B (left), and C with Building D beyond
Site_13	E	View east from between Building B (right) and the Belmont Road boundary fence towards Military Road
Site_14	W	View west from the Military Road boundary fence between Building B (left) and the Belmont Road boundary fence (right)
Site_15	S	View south between the Military Road boundary fence (left) and Building B (right)
Site_16	S	View south between the Military Road boundary fence (left) and Building B (right)
Site_17	SE	View south east from between the Military Road boundary fence (left) and Building B (right) towards Military Road
Site_18	N	View north east from the Military Road entrance towards Military Road, Building B (left)
Site_19	E	View east through the Military Road entrance to Military Road
Site_20	N	View north between the Military Road boundary fence (right) and Building B (left)
Site_21	W	View west from the Military Road entrance with Building B (right) and Building E (left)
Site_22	N	View north from between the Military Road boundary fence (right) and Building A (left) with Building B (left, beyond)
Site_23	NW	View north west from between the Military Road boundary fence and Building A (left) with Building B (right) beyond the landscape planting
Site_24	W	View west with Building A (left) and Building E (beyond)
Site_25	W	View west with Building A (left) and Building E (beyond, past the stairs)
Site_26	SE	View south east to the east end of Building A



PURCELL

Project	Mosman High School Photographic Archival Record		
Camera	Panasonic Lumix GX85 12-32mm Lens (35mm camera equivalent 24-64mm)		
Date	22/11/2021	Photographer	Hanna Morgan

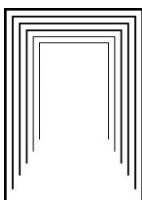
Image No.	View	Description
Site_27	S	View south to the west end of Building A, with the east end of Building E (right)
Site_28	SW	View south west to the west end of Building A, with the east end of Building E (right)
Site_29	N	View north to the south side of Building B
Site_30	E	View east towards the Military Road entrance with Building A (right) and Building B (left)
Site_31	NE	View north east to the south west corner of Building B (right), with Building C (centre left) from beside the recently installed demountables
Site_32	E	View east towards the Military Road entrance with Building A (right, past Building E) and Building B (left)
Site_33	N	View north from the ramp to Building E towards Building C, with Building B (right)
Site_34	NW	View north west from the ramp to Building E towards Gladstone Avenue, Building D partially obscured by recently installed demountables
Site_35	NW	View north west from the ramp to Building E towards Gladstone Avenue, Building D partially obscured by recently installed demountables
Site_36	N	View north from under the raised covered walkway towards Building C, with Building D (left)
Site_37	W	View west from adjacent to Building E towards Gladstone Avenue, with the COLA (ahead left) and Building D (right) obscured by recently installed demountables
Site_38	S	View south to the west end of Building E, with the COLA beyond
Site_39	SW	View south west from the west end of Building E to the COLA
Site_40	N	View north to Building D partially obscured by recently installed demountables
Site_41	SE	View south between the west end of Building E (left) and the COLA (right) towards Avenue Road
Site_42	NE	View north east to the large Ficus rubiginosa tree (#38, Birds Tree Consultancy, pp 52,55) at the west end of Building E, with Building D (beyond) partially obscured by recently installed demountables
Site_43	S	View south towards Avenue Road through the COLA
Site_44	E	View east from the Gladstone Avenue entrance, with the COLA (right), Building E (beyond, right) and demountables (left)
Site_45	N	View north, Gladstone Avenue boundary fence (left) and Building D partially obscured by recently installed demountables
Site_46	SE	View south east to the large Ficus rubiginosa tree (#38, Birds Tree Consultancy, pp 52,55) at the west end of Building E (beyond)
Site_47	W	View west between Building D (right) and demountable classrooms (left)
Site_48	N	View north under the raised, covered walkway. Building D (left and beyond), Building C (right), and demountable (right)
Site_49	NE	View north east under the raised, covered walkway. Building C (ahead), and demountable (right) with Building B beyond
Site_50	NW	View north west to Building D over the sports court
Site_51	E	View east, Building D (right), Building C (ahead left) and raised covered walkway with Building B beyond
Site_52	NE	View north east, Building D (left), Building C (ahead) and raised covered walkway with Building B beyond
Site_53	SE	View south east, Building D (right), Building C and raised covered walkway with Building B beyond
Site_54	SE	View south east, Building D (right), Building C (ahead, left) and raised covered walkway with demountable and Building A beyond



PURCELL

Project	Mosman High School Photographic Archival Record		
Camera	Panasonic Lumix GX85 12-32mm Lens (35mm camera equivalent 24-64mm)		
Date	22/11/2021	Photographer	Hanna Morgan

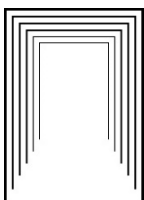
Image No.	View	Description
Site_55	NE	View north east to Building D and sports court
Site_56	E	View east, to Building D (left), Building C (right) and Building B beyond
Site_57	E	View east, to Building B, Building C (right) and Building D (left)
Site_58	S	View south to Building D (right and ahead), Building C (left)
Site_59	SE	View south east to Building C (left), raised covered walkway and Building D (right)
Site_60	E	View east under the raised, covered walkway to Building B and the northern sports court (left)
Site_61	NE	View north east under the raised, covered walkway to Building B and the northern sports court (left)
Site_62	SW	View south west under the raised, covered walkway to Building C with Building D beyond
Site_63	NW	View north west to Building D and the northern sports court
Site_64	S	View south between Building B (left) and Building C (right)
Site_65	SW	View south west to Building D (right and ahead), Building C (left)
Site_66	S	View south with Building D (right), Building C (left) and the raised, covered walkway
Site_67	SE	View south east to the raised covered walkway and Building B (beyond)
Site_68	SW	View south east to the raised covered walkway and Building E (beyond, right)
Site_69	S	View south, the raised covered walkway (left) and Building A (beyond)
Site_70	SE	View south east, Building A (right) and Building B (left)



PURCELL

Project	Mosman High School Photographic Archival Record		
Camera	Panasonic Lumix GX85 12-32mm Lens (35mm camera equivalent 24-64mm)		
Date	22/11/2021	Photographer	Hanna Morgan

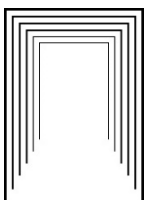
Image No.	View	Description
Building B (1962) - Exterior [Plan Reference: 102 BB-EX]		
B_EX_01	S	North end of Building B
B_EX_02	W	North end of Building B looking west, with projecting shelter
B_EX_03	SW	North east corner of Building B, showing evidence of blocked up openings
B_EX_04	S	East side of Building B, facing Military Road with school crest and sign, looking south
B_EX_05	W	North end of east side showing school crest and sign, and evidence of blocked up openings
B_EX_06	W	North end of east side showing school crest and sign, and evidence of blocked up openings
B_EX_07	N	East side of Building B, facing Military Road looking north
B_EX_08	NW	East side of Building B, detail of screens
B_EX_09	NW	East side of Building B, facing Military Road looking north
B_EX_10	NW	East end of the south side of Building B, location of plaque (detail of plaque in B_EX_12)
B_EX_11	N	View north to the south east corner of Building B
B_EX_12	N	East end of the south side of Building B, detail of plaque commemorating completion, text as follows: "THE HON. MRS V CHADWICK MLC MINISTER FOR SCHOOL EDUCATION AND YOUTH AFFAIRS UNVEILED THIS PLAQUE TO MARK THE COMPLETION OF THE BUILDING PROGRAM AT MOSMAN HIGH SCHOOL ON 31 MARCH 1992" "MR PHILLIP SMILES MP MEMBER FOR NORTH SHORE" "MRS MARIE PITTS PRINCIPAL" "DR KEN BOSTON DIRECTOR-GENERAL OF SCHOOL EDUCATION"
B_EX_13	W	View west towards the south side of Building B showing the reception entry
B_EX_14	N	View north to the south east corner of Building B, showing the reception entry
B_EX_15	N	View north to the south side of Building B
B_EX_16	NE	View north east to the south side of Building B
B_EX_17	NE	Staircase to the raised covered walkway providing access to the first floors of Buildings B and C
B_EX_18	N	Staircase to the raised covered walkway providing access to the first floors of Buildings B and C
B_EX_19	E	Entrance to the ground floor from the west side of the building (not at ground level owing to the site's downhill slope to the west)
B_EX_20	NE	Entrance to the ground floor from the west side of the building
B_EX_21	NE	West side of Building B, showing stairs to B_EX_19 and B_EX_20
B_EX_22	SE	West side of Building B, showing stairs to B_EX_19 and B_EX_20
B_EX_23	SE	West side of Building B (left), showing stairs to B_EX_19 and B_EX_20 and raised, covered walkway connecting Building B to C
B_EX_24	E	West side of Building B, detail of doors to multipurpose space
B_EX_25	S	West side of Building B



PURCELL

Project	Mosman High School Photographic Archival Record		
Camera	Panasonic Lumix GX85 12-32mm Lens (35mm camera equivalent 24-64mm)		
Date	22/11/2021	Photographer	Hanna Morgan

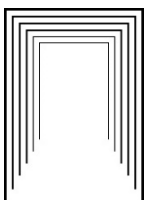
Image No.	View	Description
B_EX_26	E	North west corner of Building B showing the covered walkway (left) that connects Buildings B and C
B_EX_27	E	North west corner of Building B showing the covered walkway that connects Buildings B and C (right), and the northern sports court (left)
B_EX_28	NE	View through the northern sports court towards Belmont Road
B_EX_29	S	View between the northern sports court (right) and Building B
B_EX_30	SE	North west corner of Building B from under the shelter
B_EX_31	SW	North end of Building B with bricked-up openings (left), Building D beyond through the northern sports court.
Building B (1962) - Interior Ground Floor [Plan Reference: 103 SB-IN-G]		
B_IN_01	W	Reception Waiting Room
B_IN_02	N	Reception Desk with Clerical area behind
B_IN_03	SW	Reception Desk with Clerical area behind
B_IN_04	N	Corridor adjacent to the Reception Desk
B_IN_05	SW	Waiting space next to the lift
B_IN_06	W	View west past the Clerical area to the exterior, waiting area and lift to the right
B_IN_07	E	View from the external entry doors towards the east, Clerical area to the right
B_IN_08	S	View to the Tea room
B_IN_09	S	Principal's office
B_IN_10	S	Corridor to the east of the Principal's office, store / photocopy room at the end
B_IN_11	E	View from corridor into the Staff Toilet
B_IN_12	E	View from corridor into the Cleaner's room
B_IN_13	SE	Store / photocopy room
B_IN_14	W	Store / photocopy room door
B_IN_15	N	View north along the main north - south corridor
B_IN_16	N	Southern GLS to the east side of the main north - south corridor
B_IN_17	NW	Middle GLS to the east side of the main north - south corridor (marked Storeroom on the plan)
B_IN_18	S	Northern GLS to the east side of the main north - south corridor
B_IN_19	S	View south along the main north - south corridor
B_IN_20	NE	Doors to the Boy's Toilet from the main north - south corridor
B_IN_21	E	Doors to the Store on the east side of the main north - south corridor



PURCELL

Project	Mosman High School Photographic Archival Record		
Camera	Panasonic Lumix GX85 12-32mm Lens (35mm camera equivalent 24-64mm)		
Date	22/11/2021	Photographer	Hanna Morgan

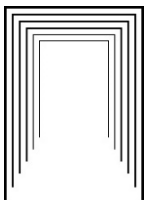
Image No.	View	Description
B_IN_22	SW	View to the exterior through the south western entrance
B_IN_23	W	Northern stairs to the First Floor
B_IN_24	SW	Interior of the Multipurpose Space, stage to the left (on the eastern side of the room), interior of the doors in B_EX_24
B_IN_25	S	View south inside the Multipurpose Space
B_IN_26	E	View of the stage (eastern side of the Multipurpose Space)
B_IN_27	SE	Detail of the school crest over the stage
B_IN_28	N	Southern end of the Multipurpose Space
B_IN_29	N	Detail of the Multipurpose Space ceiling
B_IN_30	NE	Doors to the Corridor (adjacent to the south western entrance.
Building B (1962) - Interior First Floor [Plan Reference: I04 BB-IN-F]		
B_IN_01	SW	Stairs at northern end of Building B
B_IN_02	S	View of corridor at northern end of Building B
B_IN_03	W	View from corridor to Control Room Door and Tiered Learning Space
B_IN_04	S	View of Library from northern entrance
B_IN_05	NE	View from Library to northern entrance door and Senior Study
B_IN_06	W	View in Library towards Military Road
B_IN_07	SE	View into southern seminar rooms
B_IN_08	SW	View towards Librarian's Office
B_IN_09	SW	View into Offices
B_IN_10	S	View into Offices
B_IN_11	N	View inside the Clinic room
B_IN_12	N	View inside the AV Workshop
B_IN_13	NE	View from Office door into Library
B_IN_14	N	View from the Librarian's Office into Library
B_IN_15	W	View into southern entry corridor
B_IN_16	NW	View of lift lobby
B_IN_17	NE	View from southern entry corridor into Library
B_IN_18	N	View from south eastern corner into Library



PURCELL

Project	Mosman High School Photographic Archival Record		
Camera	Panasonic Lumix GX85 12-32mm Lens (35mm camera equivalent 24-64mm)		
Date	22/11/2021	Photographer	Hanna Morgan

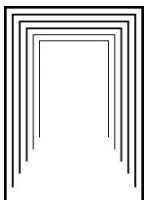
Image No.	View	Description
Building C (1926) - Exterior [Plan Reference: 105 BC-EX]		
C_EX_01	SE	View of the north west corner of Building C
C_EX_02	E	View from Building D sports court towards Building B, beyond the northern sports court, with the north side of Building C (right)
C_EX_03	SE	View of the north side of Building C, the covered walkway connecting to the northern entrance to Building B with Building B beyond
C_EX_04	S	View of the north side of Building C, the covered walkway connecting to the northern entrance to Building B with view through Building C to demountables beyond
C_EX_05	S	View through Building C Canteen shelter to demountables beyond
C_EX_06	S	Detail of string course, and upper level windows on the north side of Building C
C_EX_07	S	View of the north side of Building C
C_EX_08	SW	View of the north east corner of Building C
C_EX_09	S	View from under the covered walkway, past the east side of Building C (right) with Building B Multipurpose Space (left)
C_EX_10	SW	View of the north east corner of Building C, with Building D beyond (right) and the raised covered walkway connecting with Buildings D and E beyond (Left)
C_EX_11	W	View past the north side of Building C to Building D beyond
C_EX_12	SW	Detail of Building C string course and upper floor rough cast render finish
C_EX_13	W	Detail of Building C east side windows with string course and upper floor rough cast render finish
C_EX_14	NW	View of the south east corner and east side of Building C
C_EX_15	W	View past the south side of Building C to Building D beyond, showing the raised covered walkway connecting Buildings B, C, D and E
C_EX_16	N	View of the south side of Building C from under the raised, covered walkway connecting Buildings B, C, D and E
C_EX_17	NE	View of the south side of Building C, with Building B beyond
C_EX_18	N	View of the upper level of the south side of Building C, on the raised, covered walkway, showing the string course and rough cast finish
C_EX_19	NW	View of the upper level of the south side of Building C, on the raised, covered walkway, showing the string course and rough cast finish
C_EX_20	N	View of the upper level of the south side of Building C, on the raised, covered walkway, showing the string course and rough cast finish
C_EX_21	N	View of the west end of the south side of Building C from under the raised, covered walkway connecting Buildings B, C, D and E
C_EX_22	NE	View of the south west corner and south side of Building C, and the raised, covered walkway
C_EX_23	NE	Detail of the south west corner of Building C
C_EX_24	NE	View of the west side of Building C
C_EX_25	E	View of the west side of Building C, with Building B beyond (right) and the northern sports court (left)
C_EX_26	E	Detail of the south end of the west side of Building C



PURCELL

Project	Mosman High School Photographic Archival Record		
Camera	Panasonic Lumix GX85 12-32mm Lens (35mm camera equivalent 24-64mm)		
Date	22/11/2021	Photographer	Hanna Morgan

Image No.	View	Description
Building C (1926) - Interior Ground Floor [Plan Reference: 106 BC-IN-G]		
C_IN_01	SE	View towards the Canteen servery from the north west corner of Building C
C_IN_02	E	View of the storeroom and doors to the Cleaning and Office Stores to the east side
C_IN_03	S	Detail of the Canteen servery
C_IN_04	SW	View to the west side, with Building D (1926) through the opening (right)
C_IN_05	W	View to the west side, with Building D through the opening (ahead)
C_IN_06	NW	View to the north west corner towards Building D beyond
C_IN_07	N	View to the north east corner with Building D visible through the left opening
C_IN_08	E	View of the storeroom and doors to the Cleaning and Office Stores to the east side
C_IN_09	E	View of the doors to the Cleaning and Office Stores to the east side
C_IN_10	W	Detail of the floor in front of the Canteen servery
C_IN_11	NE	Detail of the Storeroom to the east side
C_IN_12	SW	View to the corridor to the southern entrance, with Building D visible through the western opening
C_IN_13	S	View south through the corridor to the southern entrance, with Building E visible beyond the demountables (left) and raised covered walkway (right)
C_IN_14	SW	View of the west wall of the corridor to the southern entrance
C_IN_15	NW	View of the west wall of the corridor to the southern entrance
C_IN_16	N	View north through the corridor to the southern entrance
C_IN_17	E	View to the Canteen and Electrical Distribution Board doors
C_IN_18	N	View from the corridor to the northern entrances
C_IN_19	N	View north inside the Cleaning Store
C_IN_20	E	View east inside the Cleaning Store
C_IN_21	E	View east inside the Office Store
C_IN_22	S	View south inside the Office Store
C_IN_23	S	View south inside the Bulk Store
C_IN_24	N	View north inside the Bulk Store
C_IN_25	W	View west inside the Office Store of the slop sink
C_IN_26	NE	View north east inside the Canteen
C_IN_27	E	View east inside the Canteen with windows on the south wall (Right)



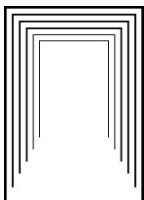
PURCELL

Project	Mosman High School Photographic Archival Record		
Camera	Panasonic Lumix GX85 12-32mm Lens (35mm camera equivalent 24-64mm)		
Date	22/11/2021	Photographer	Hanna Morgan

Image No.	View	Description
C_IN_28	NW	View of the inside of the Canteen servery
C_IN_29	W	View west inside the Canteen, with the south wall of Building C right
C_IN_30	SW	Detail of windows in the south wall
C_IN_31	SW	View west inside the Canteen to the entrance door
C_IN_32	N	View north inside the Office Store adjacent to the west side of the Canteen
C_IN_33	S	View south inside the Office Store adjacent to the west side of the Canteen
C_IN_34	W	View from the corridor adjacent to the Canteen entrance towards the General Assistant's room
C_IN_35	NW	View north west inside the General Assistant's room
C_IN_36	S	View south inside the General Assistant's room
C_IN_37	S	View south inside the General Assistant's room
C_IN_38	E	Detail of the floor at the threshold to the General Assistant's room
C_IN_39	E	View inside the Storeroom on the east side of the building
C_IN_40	SE	View inside the Storeroom on the east side of the building

Building C (1926) - Interior First Floor [Plan Reference: I07 BC-IN-F]

C_IN_01	N	Stairs at south east corner of Building C
C_IN_02	NE	View into Storeroom from upper stair landing
C_IN_03	N	View into corridor from upper stair landing
C_IN_04	S	View towards exit to raised covered walkway connecting Buildings B, C, D and E
C_IN_05	S	View towards exit to raised covered walkway connecting Buildings B, C, D and E from the northeast corner of the corridor
C_IN_06	SW	View towards doors to the music store (left) and two Music Learning Spaces (LS) ahead
C_IN_07	E	View from doors to the two Music LS towards the corridor to Practice Rooms 3 and 4 on the north east corner of the building
C_IN_08	W	Detail of roof access hatch above the southern Music LS door
C_IN_09	NE	Detail of the north east corner of the corridor at the door to the Comp Resource room (left) and corridor to Practice Rooms 3 and 4 (right)
C_IN_10	S	Detail of the cupboard on the corner of the corridor
C_IN_11	SW	View to Practice Room 1 on the south side of the building
C_IN_12	S	Inside the Practice Room 1
C_IN_13	SE	Inside the room adjacent to Practice Room 1
C_IN_14	NE	Inside the room adjacent to Practice Room 1, showing kitchenette



PURCELL

Project	Mosman High School Photographic Archival Record		
Camera	Panasonic Lumix GX85 12-32mm Lens (35mm camera equivalent 24-64mm)		
Date	22/11/2021	Photographer	Hanna Morgan

Image No.	View	Description
C_IN_15	S	Inside the southern Music LS room, facing the southern wall of the building
C_IN_16	SW	View from the south windows of the southern Music room, showing Building D (right) and Building E beyond the raised, covered, connecting walkway
C_IN_17	S	Inside the southern Music LS room showing the exit to the raised covered walkway
C_IN_18	E	Inside the southern Music LS room, view into the corridor
C_IN_19	NW	Inside the northern Music LS room, view to the north west corner
C_IN_20	SW	Inside the northern Music LS room, view to the South west corner
C_IN_21	E	Inside the northern Music LS room, view to the operable wall
C_IN_22	SE	Inside the Comp Resource room, view towards the south east, showing the door to the corridor
C_IN_23	NW	Detail of the window on the north wall, with a view of the northern sports court
C_IN_24	NW	Detail of the wall between the windows in the Comp Resource room
C_IN_25	S	View through doors between the Comp Resource room and the corridor to the southern exit to the covered, raised walkway
C_IN_26	N	Inside the corridor to Practice Rooms 3 and 4 on the north east corner of the building
C_IN_27	E	View through the eastern window in Practice Room 3 to Building B (Multipurpose Space doors)
C_IN_28	SE	Inside the corridor to Practice Rooms 3 and 4
C_IN_29	E	Inside Practice Room 4
C_IN_30	SW	Inside Practice Room 4, looking to the entrance door
C_IN_31	W	Detail of the wall in the corridor outside Practice Rooms 3 and 4
C_IN_32	SW	View from the corridor outside Practice Rooms 3 and 4, into the main corridor

APPENDICES

APPENDIX 3 THUMBNAIL IMAGE SHEETS

Mosman High School Photographic Archival Record - Views



Views_01.JPG



Views_02.JPG



Views_03.JPG



Views_04.JPG



Views_05.JPG



Views_06.JPG



Views_07.JPG



Views_08.JPG



Views_09.JPG



Views_10.JPG



Views_11.JPG



Views_12.JPG



Views_13.JPG



Views_14.JPG



Views_15.JPG



Views_16.JPG



Views_17.JPG



Views_18.JPG



Views_19.JPG



Views_20.JPG



Views_21.JPG



Views_22.JPG



Views_23.JPG



Views_24.JPG



Views_25.JPG



Views_26.JPG



Views_27.JPG



Views_28.JPG

Mosman High School Photographic Archival Record - Site



Site_01.JPG



Site_02.JPG



Site_03.JPG



Site_04.JPG



Site_05.JPG



Site_06.JPG



Site_07.JPG



Site_08.JPG



Site_09.JPG



Site_10.JPG



Site_11.JPG



Site_12.JPG



Site_13.JPG



Site_14.JPG



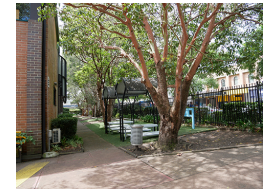
Site_15.JPG



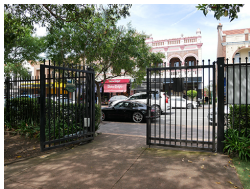
Site_16.JPG



Site_17.JPG



Site_18.JPG



Site_19.JPG



Site_20.JPG



Site_21.JPG



Site_22.JPG



Site_23.JPG



Site_24.JPG



Site_25.JPG



Site_26.JPG



Site_27.JPG



Site_28.JPG



Site_29.JPG



Site_30.JPG



Site_31.JPG



Site_32.JPG



Site_33.JPG



Site_34.JPG



Site_35.JPG



Site_36.JPG

Mosman High School Photographic Archival Record - Site



Site_37.JPG



Site_38.JPG



Site_39.JPG



Site_40.JPG



Site_41.JPG



Site_42.JPG



Site_43.JPG



Site_44.JPG



Site_45.JPG



Site_46.JPG



Site_47.JPG



Site_48.JPG



Site_49.JPG



Site_50.JPG



Site_51.JPG



Site_52.JPG



Site_53.JPG



Site_54.JPG



Site_55.JPG



Site_56.JPG



Site_57.JPG



Site_58.JPG



Site_59.JPG



Site_60.JPG



Site_61.JPG



Site_62.JPG



Site_63.JPG



Site_64.JPG



Site_65.JPG



Site_66.JPG



Site_67.JPG



Site_68.JPG



Site_69.JPG



Site_70.JPG

Mosman High School Photographic Archival Record - Building B Exterior



B_EX_01.JPG



B_EX_02.JPG



B_EX_03.JPG



B_EX_04.JPG



B_EX_05.JPG



B_EX_06.JPG



B_EX_07.JPG



B_EX_08.JPG



B_EX_09.JPG



B_EX_10.JPG



B_EX_11.JPG



B_EX_12.JPG



B_EX_13.JPG



B_EX_14.JPG



B_EX_15.JPG



B_EX_16.JPG



B_EX_17.JPG



B_EX_18.JPG



B_EX_19.JPG



B_EX_20.JPG



B_EX_21.JPG



B_EX_22.JPG



B_EX_23.JPG



B_EX_24.JPG



B_EX_25.JPG



B_EX_26.JPG



B_EX_27.JPG



B_EX_28.JPG



B_EX_29.JPG



B_EX_30.JPG



B_EX_31.JPG

Mosman High School Photographic Archival Record - Building B Interior Ground Floor



B_GF_01.JPG



B_GF_02.JPG



B_GF_03.JPG



B_GF_04.JPG



B_GF_05.JPG



B_GF_06.JPG



B_GF_07.JPG



B_GF_08.JPG



B_GF_09.JPG



B_GF_10.JPG



B_GF_11.JPG



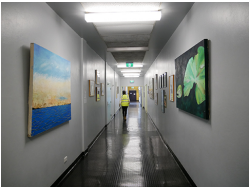
B_GF_12.JPG



B_GF_13.JPG



B_GF_14.JPG



B_GF_15.JPG



B_GF_16.JPG



B_GF_17.JPG



B_GF_18.JPG



B_GF_19.JPG



B_GF_20.JPG



B_GF_21.JPG



B_GF_22.JPG



B_GF_23.JPG



B_GF_24.JPG



B_GF_25.JPG



B_GF_26.JPG



B_GF_27.JPG



B_GF_28.JPG



B_GF_29.JPG



B_GF_30.JPG

Mosman High School Photographic Archival Record - Building B Interior First Floor



B_FF_01.JPG



B_FF_02.JPG



B_FF_03.JPG



B_FF_04.JPG



B_FF_05.JPG



B_FF_06.JPG



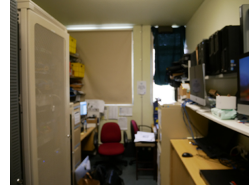
B_FF_07.JPG



B_FF_08.JPG



B_FF_09.JPG



B_FF_10.JPG



B_FF_11.JPG



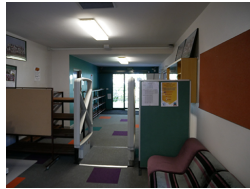
B_FF_12.JPG



B_FF_13.JPG



B_FF_14.JPG



B_FF_15.JPG



B_FF_16.JPG



B_FF_17.JPG



B_FF_18.JPG

Mosman High School Photographic Archival Record - Building C Exterior



C_EX_01.JPG



C_EX_02.JPG



C_EX_03.JPG



C_EX_04.JPG



C_EX_05.JPG



C_EX_06.JPG



C_EX_07.JPG



C_EX_08.JPG



C_EX_09.JPG



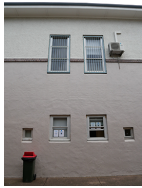
C_EX_10.JPG



C_EX_11.JPG



C_EX_12.JPG



C_EX_13.JPG



C_EX_14.JPG



C_EX_15.JPG



C_EX_16.JPG



C_EX_17.JPG



C_EX_18.JPG



C_EX_19.JPG



C_EX_20.JPG



C_EX_21.JPG



C_EX_22.JPG



C_EX_23.JPG



C_EX_24.JPG



C_EX_25.JPG



C_EX_26.JPG

Mosman High School Photographic Archival Record - Building C Interior Ground Floor



C_GF_01.JPG



C_GF_02.JPG



C_GF_03.JPG



C_GF_04.JPG



C_GF_05.JPG



C_GF_06.JPG



C_GF_07.JPG



C_GF_08.JPG



C_GF_09.JPG



C_GF_10.JPG



C_GF_11.JPG



C_GF_12.JPG



C_GF_13.JPG



C_GF_14.JPG



C_GF_15.JPG



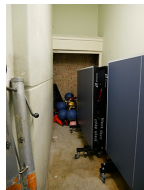
C_GF_16.JPG



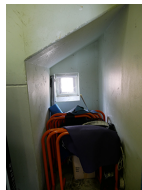
C_GF_17.JPG



C_GF_18.JPG



C_GF_19.JPG



C_GF_20.JPG



C_GF_21.JPG



C_GF_22.JPG



C_GF_23.JPG



C_GF_24.JPG



C_GF_25.JPG



C_GF_26.JPG



C_GF_27.JPG



C_GF_28.JPG



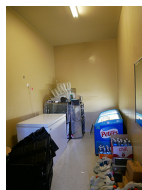
C_GF_29.JPG



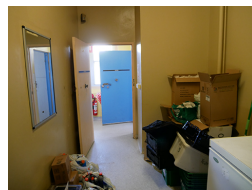
C_GF_30.JPG



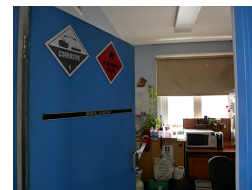
C_GF_31.JPG



C_GF_32.JPG



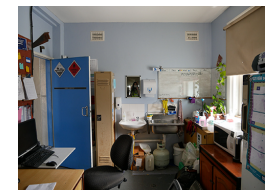
C_GF_33.JPG



C_GF_34.JPG

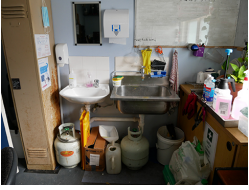


C_GF_35.JPG



C_GF_36.JPG

Mosman High School Photographic Archival Record - Building C Interior Ground Floor



C_GF_37.JPG



C_GF_38.JPG

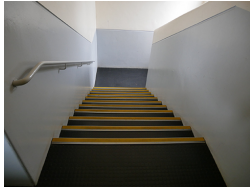


C_GF_39.JPG

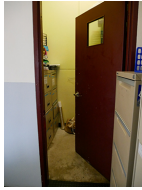


C_GF_40.JPG

Mosman High School Photographic Archival Record - Building C Interior First Floor



C_FF_01.JPG



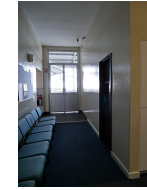
C_FF_02.JPG



C_FF_03.JPG



C_FF_04.JPG



C_FF_05.JPG



C_FF_06.JPG



C_FF_07.JPG



C_FF_08.JPG



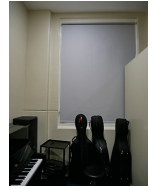
C_FF_09.JPG



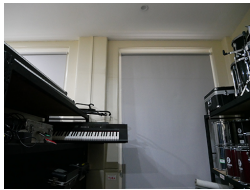
C_FF_10.JPG



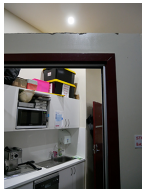
C_FF_11.JPG



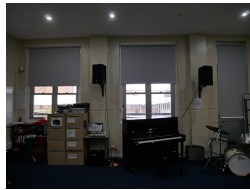
C_FF_12.JPG



C_FF_13.JPG



C_FF_14.JPG



C_FF_15.JPG



C_FF_16.JPG



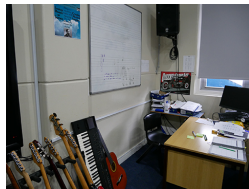
C_FF_17.JPG



C_FF_18.JPG



C_FF_19.JPG



C_FF_20.JPG



C_FF_21.JPG



C_FF_22.JPG



C_FF_23.JPG



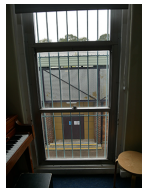
C_FF_24.JPG



C_FF_25.JPG



C_FF_26.JPG



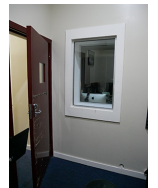
C_FF_27.JPG



C_FF_28.JPG



C_FF_29.JPG



C_FF_30.JPG



C_FF_31.JPG



C_FF_32.JPG

APPENDICES

APPENDIX 4 SELECTION OF PHOTOGRAPHS

Mosman High School Photographic Archival Record - Selection of Photographs



Views_11.JPG



Views_16.JPG

Mosman High School Photographic Archival Record - Selection of Photographs



Views_25.JPG



Site_06.JPG

Mosman High School Photographic Archival Record - Selection of Photographs



Site_10.JPG



Site_26.JPG

Mosman High School Photographic Archival Record - Selection of Photographs



Site_29.JPG



Site_31.JPG

Mosman High School Photographic Archival Record - Selection of Photographs



Site_39.JPG



Site_40.JPG

Mosman High School Photographic Archival Record - Selection of Photographs



Site_50.JPG



Site_58.JPG

Mosman High School Photographic Archival Record - Selection of Photographs



B_EX_15.JPG



B_EX_25.JPG

Mosman High School Photographic Archival Record - Selection of Photographs



B_GF_02.JPG



B_GF_07.JPG

Mosman High School Photographic Archival Record - Selection of Photographs



B_GF_16.JPG



B_GF_26.JPG

Mosman High School Photographic Archival Record - Selection of Photographs



B_FF_04.JPG



B_FF_12.JPG

Mosman High School Photographic Archival Record - Selection of Photographs



C_EX_01.JPG



C_EX_16.JPG

Mosman High School Photographic Archival Record - Selection of Photographs



C_GF_02.JPG



C_GF_06.JPG

Mosman High School Photographic Archival Record - Selection of Photographs



C_GF_14.JPG



C_GF_26.JPG

Mosman High School Photographic Archival Record - Selection of Photographs



C_GF_35.JPG



C_GF_36.JPG

Mosman High School Photographic Archival Record - Selection of Photographs



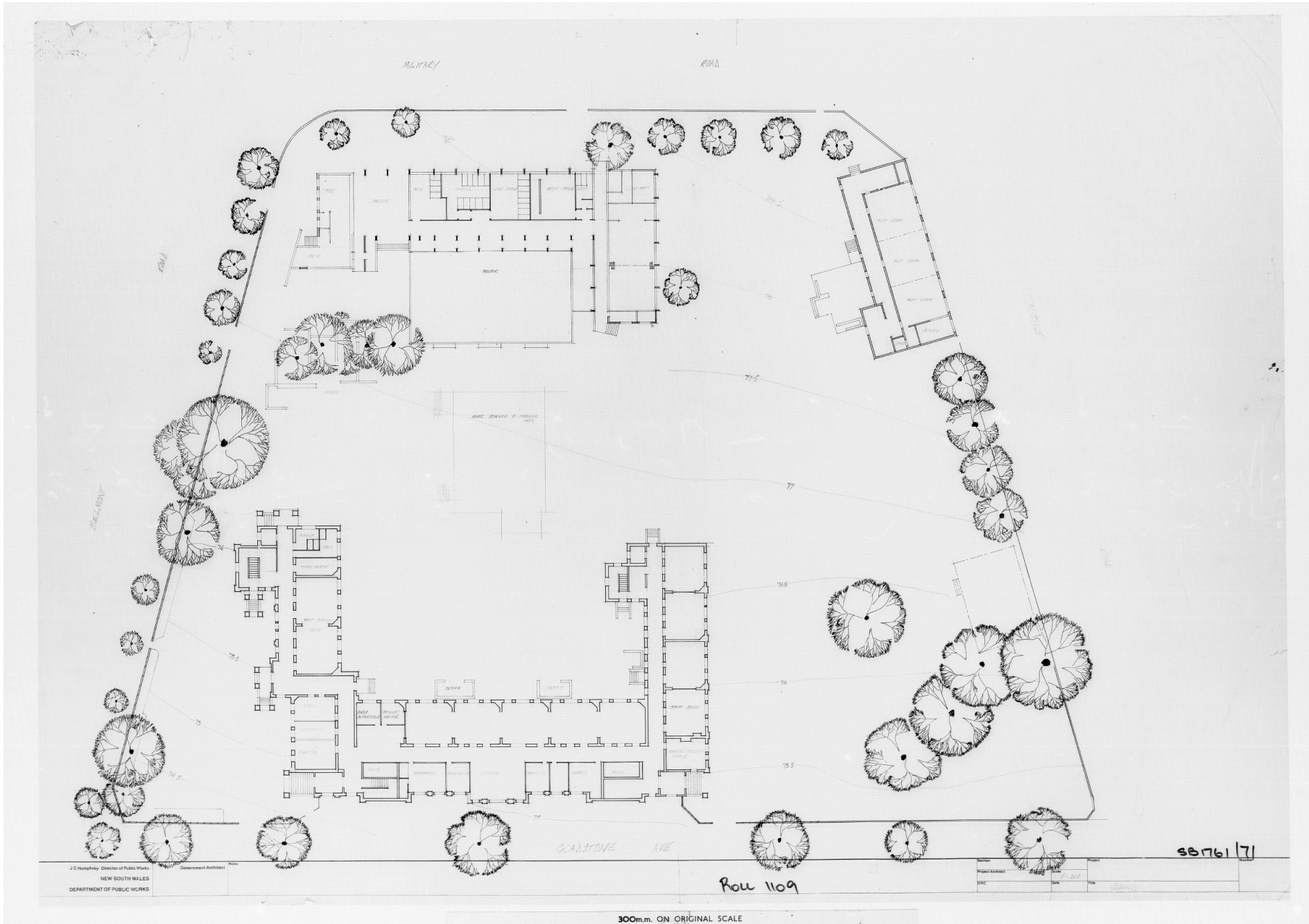
C_FF_19.JPG



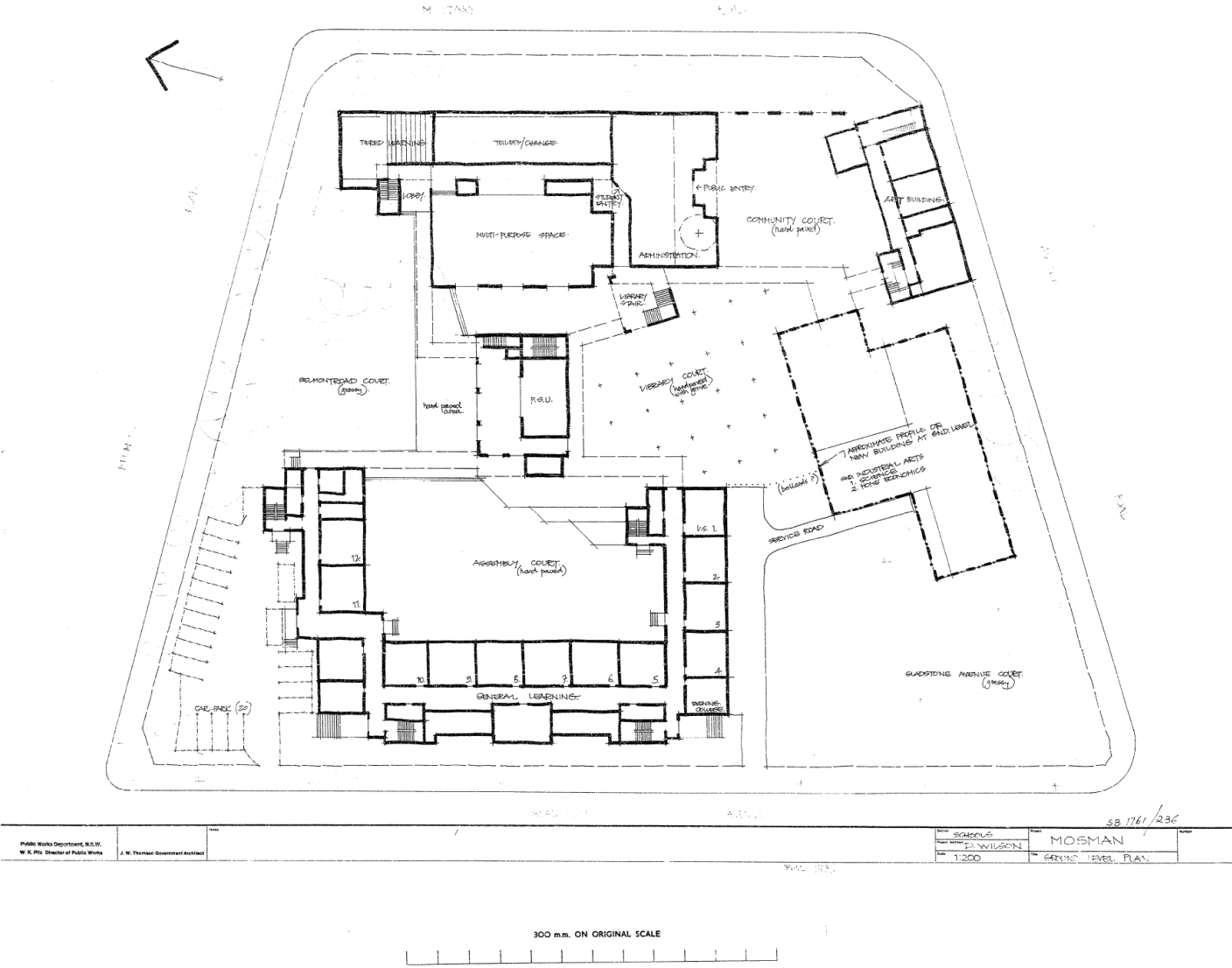
C_FF_21.JPG

APPENDICES

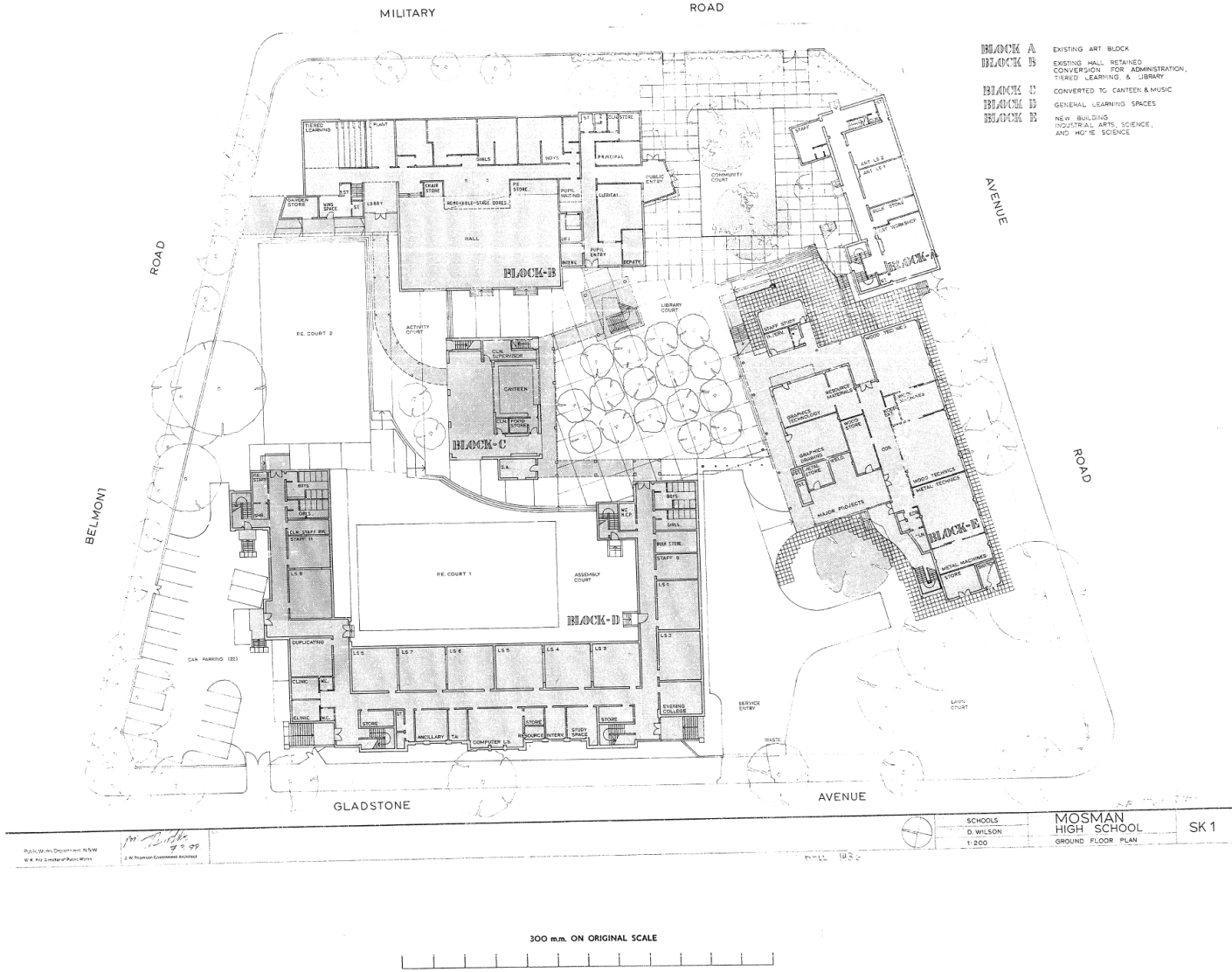
APPENDIX 5 HISTORICAL IMAGES AND DOCUMENTS



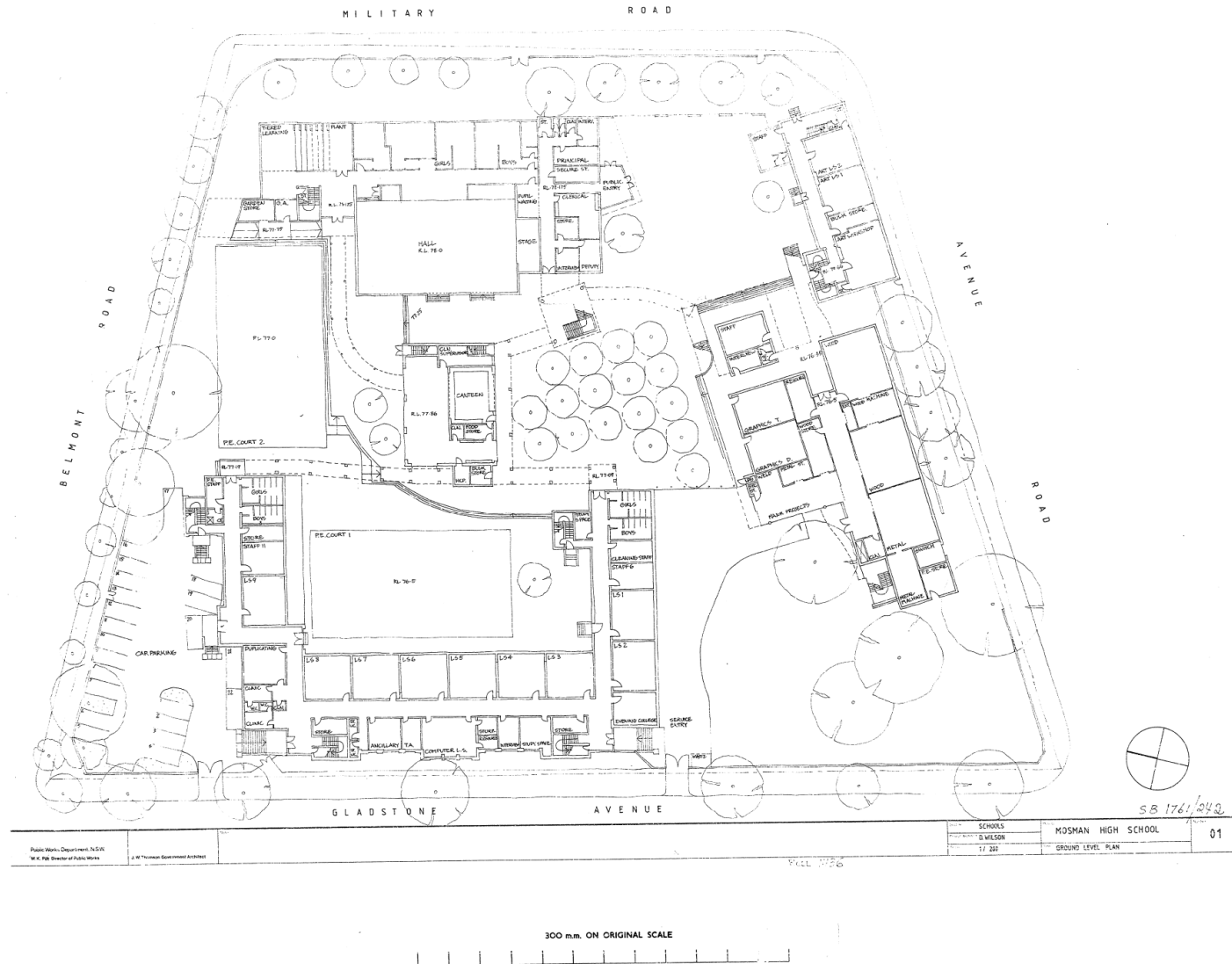
Ground Floor Floor Plan.pdf



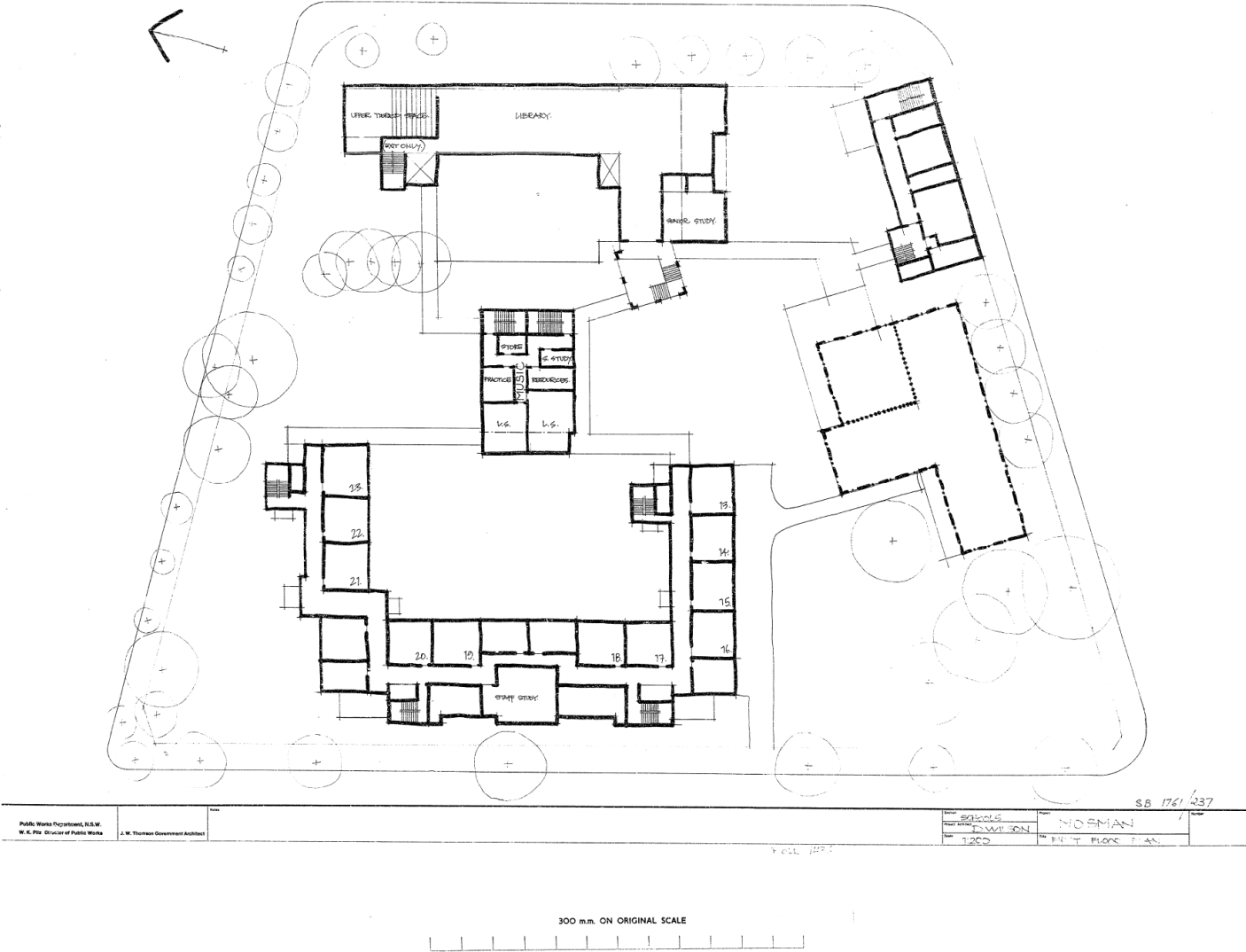
Ground Level Plan.pdf



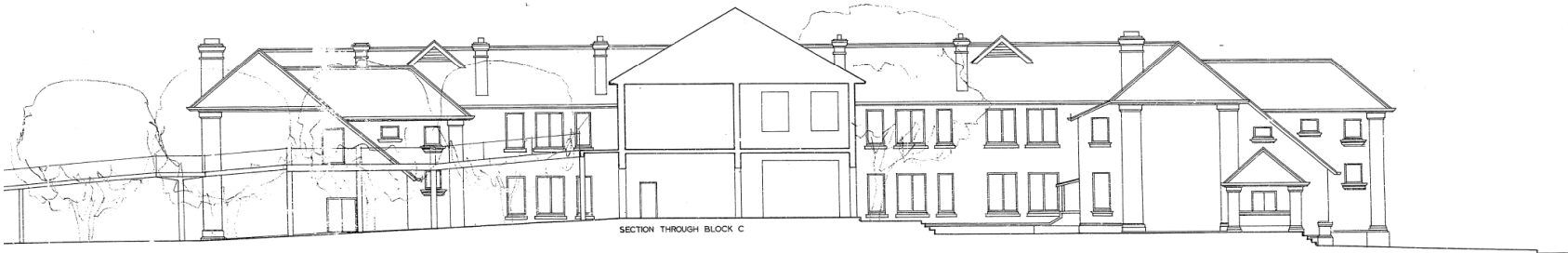
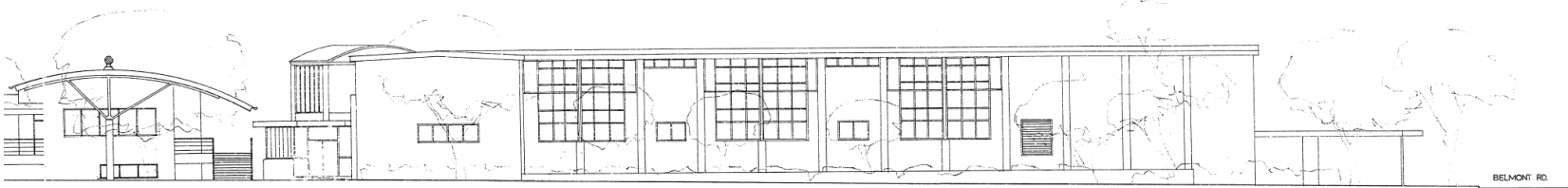
Ground Floor Plan.pdf



Ground Level Plan(2).pdf



First Floor Plan.pdf



WEST

Section

SCHOOLS

Project Archt.

D. WILSON

Scale

1:100

Project

MOSMAN
HIGH SCHOOL

Title

ELEVATIONS

SB 1761/254

Roll 1436

300 m.m. ON ORIGINAL SCALE

Elevations - (Frame 1).pdf

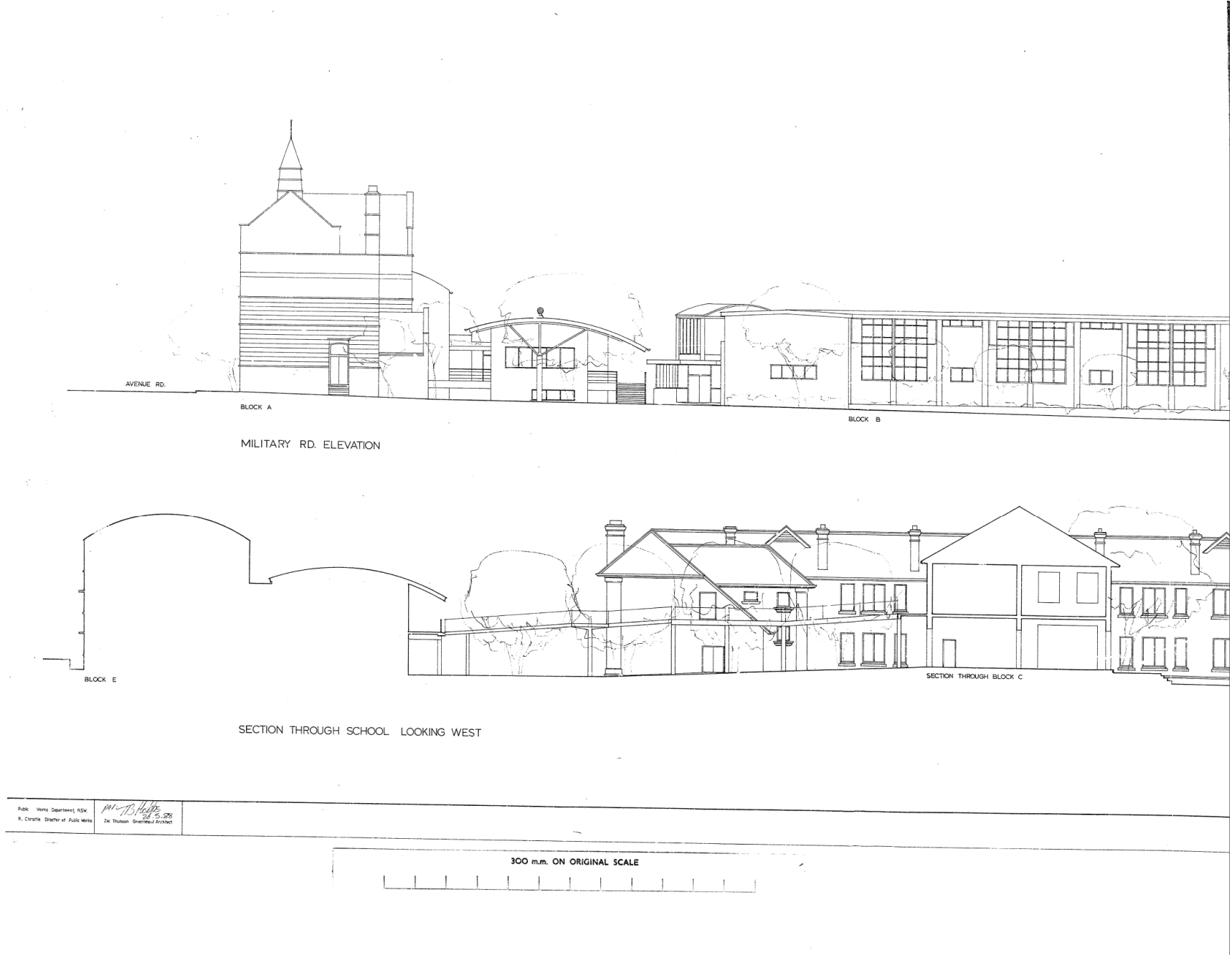


SB 1761/255

Section	SCHOOLS	Project	MOSMAN HIGH SCHOOL	DBB
Project Arch.	D. WILSON	Title	ELEVATIONS	
Scale	1:100	Reel	1436	

300 m.m. ON ORIGINAL SCALE

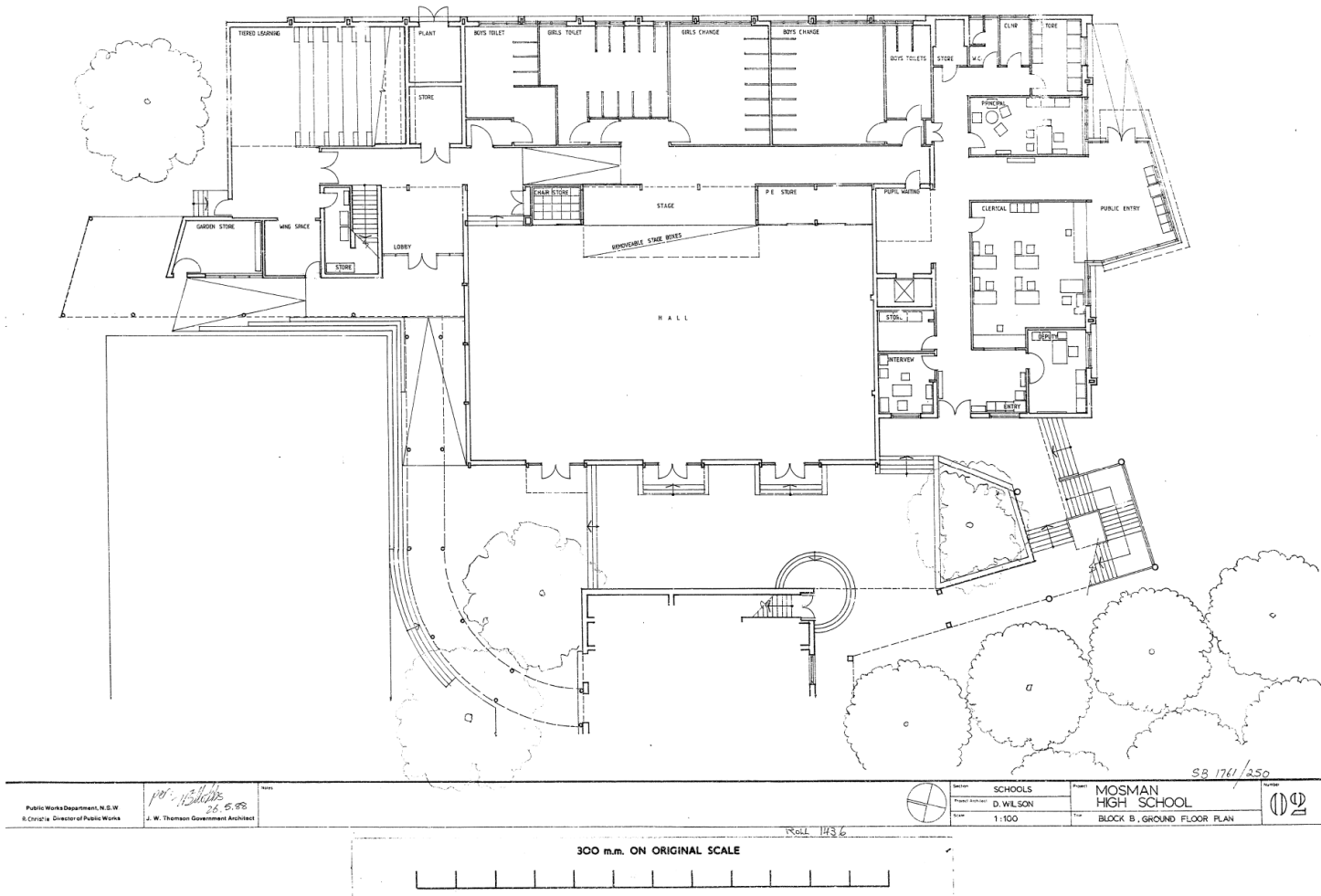
Elevations - (Frame 1)(2).pdf



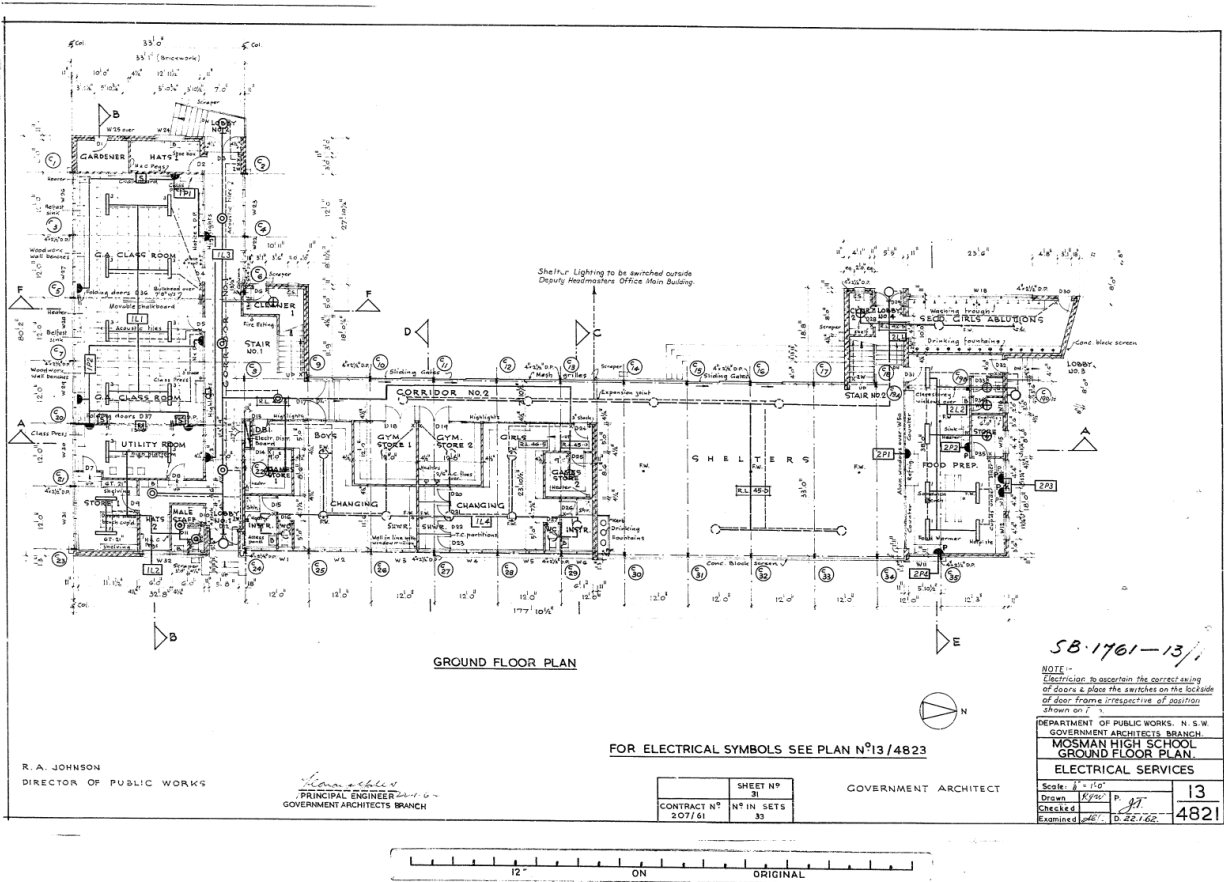
Elevations - (Frame 2).pdf

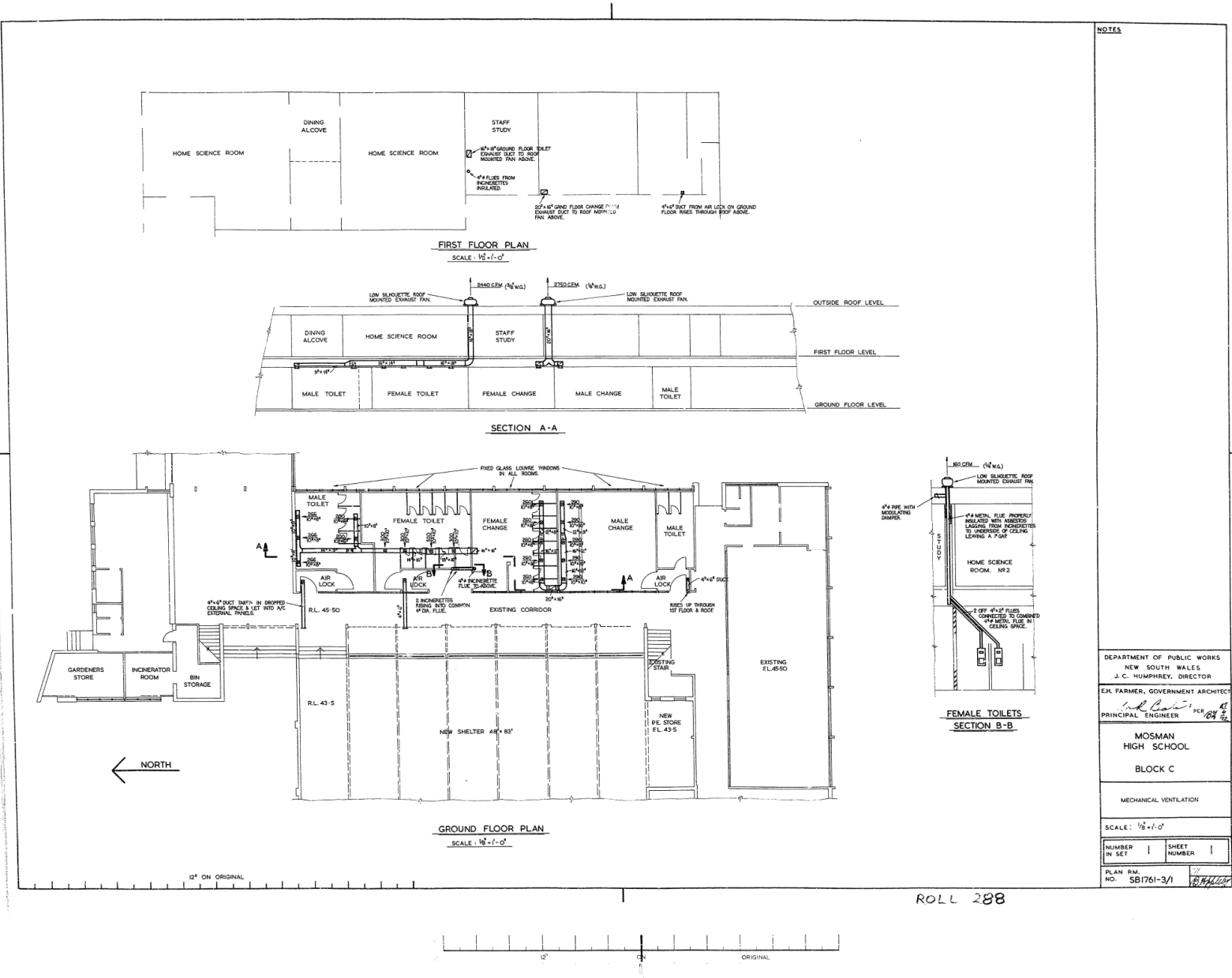


Elevations - (Frame 2)(2).pdf

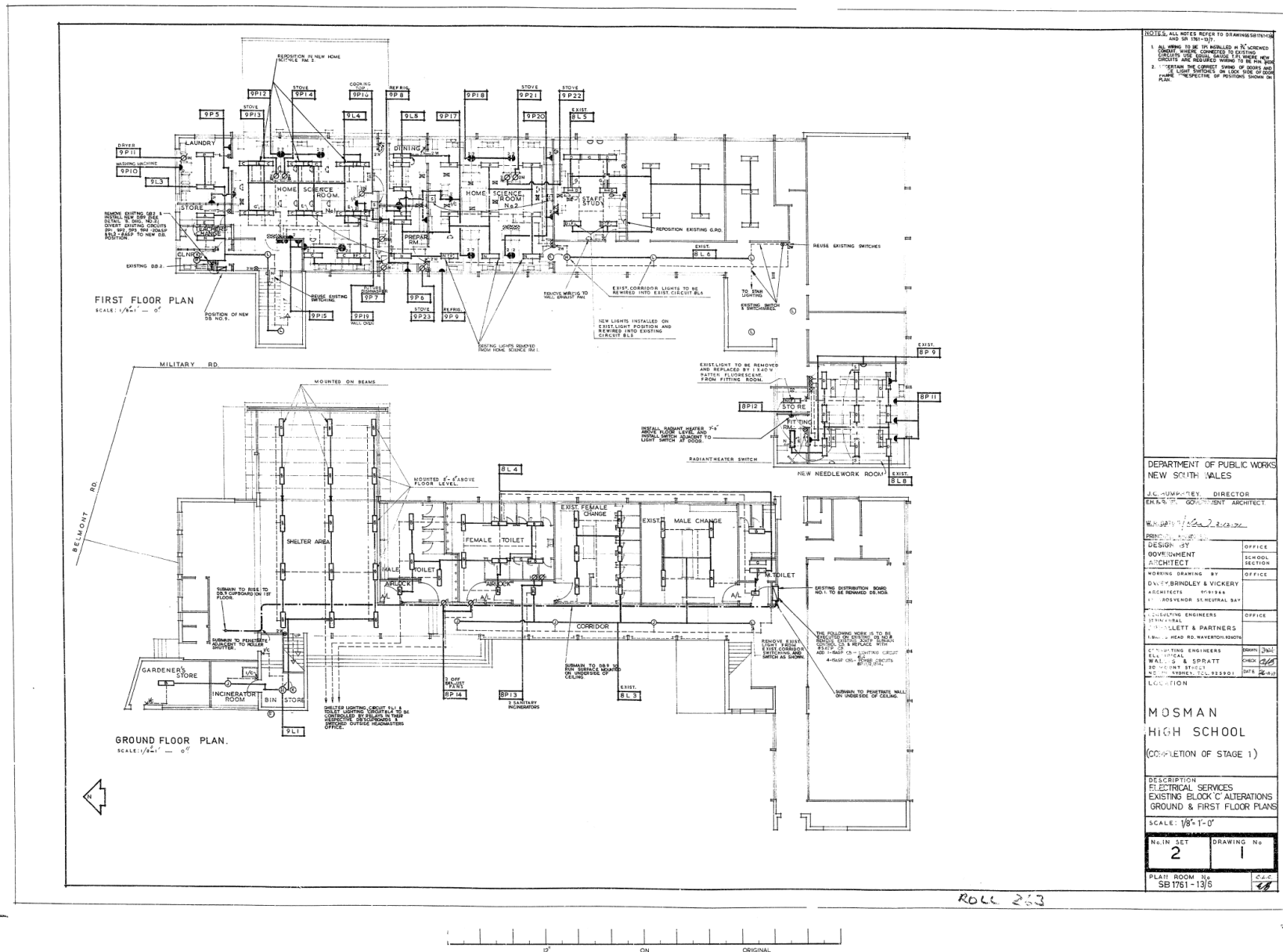


Block B - Ground Floor Plan.pdf

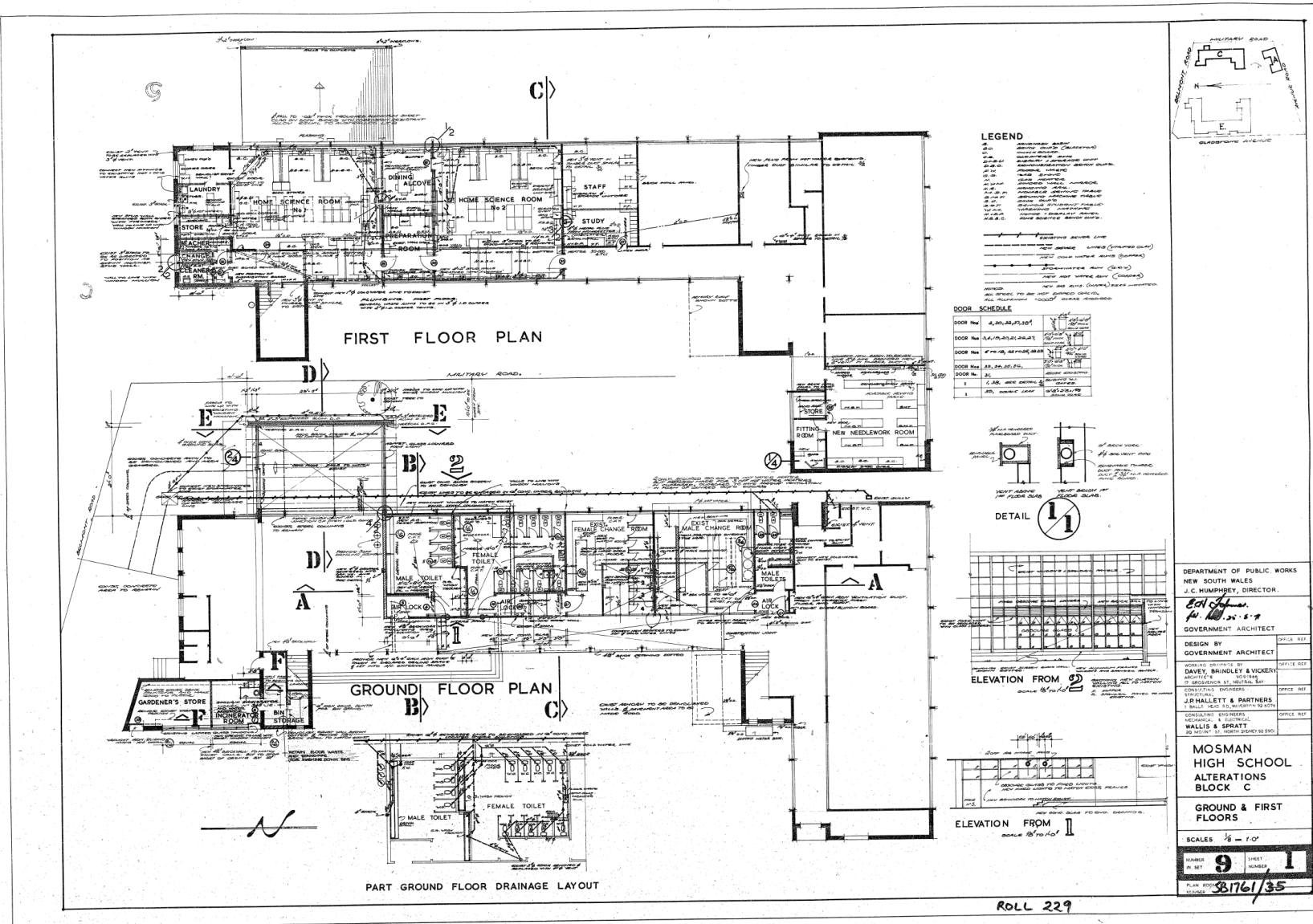




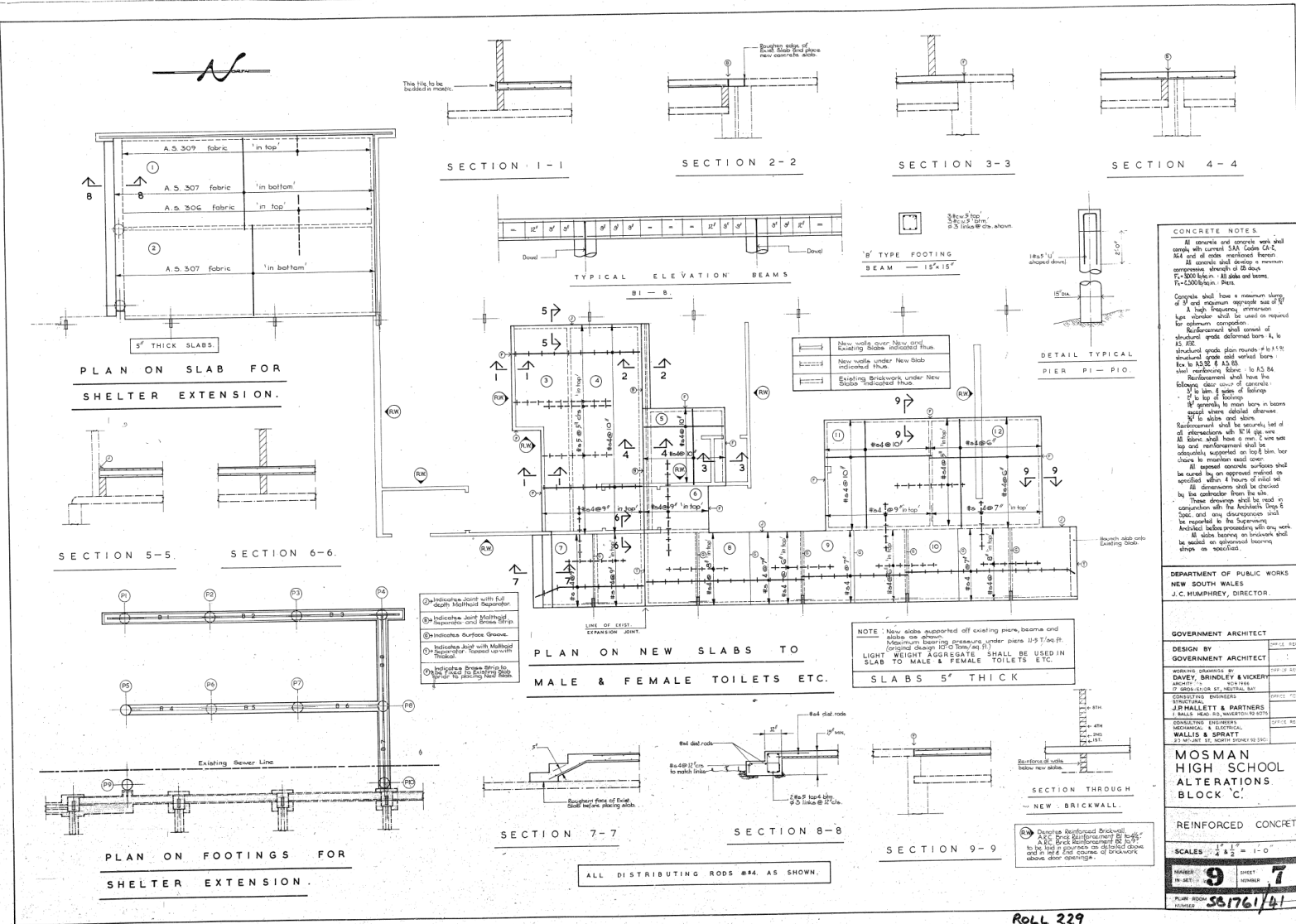
NOTES	
DEPARTMENT OF PUBLIC WORKS NEW SOUTH WALES J. C. HUMPHREY, DIRECTOR	
E. H. FARMER, GOVERNMENT ARCHITECT	
PRINCIPAL ENGINEER	
MOSMAN HIGH SCHOOL BLOCK C	
MECHANICAL VENTILATION	
SCALE: 1/8" = 1'-0"	
NUMBER IN SET	SHEET NUMBER
PLAN RM. NO. SB1761-3/1	



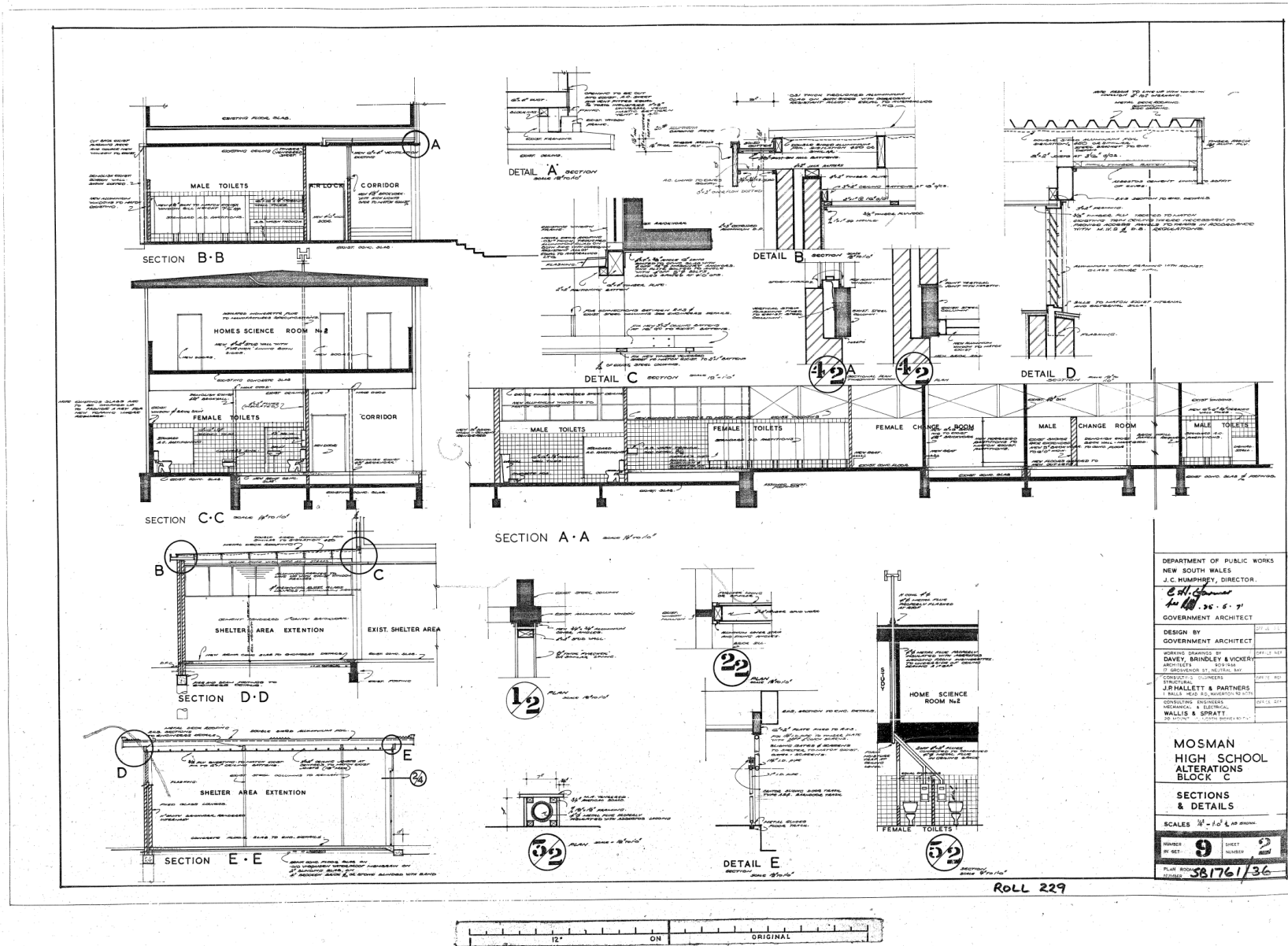
Block C Alt - Ground & First Floor Plan.pdf



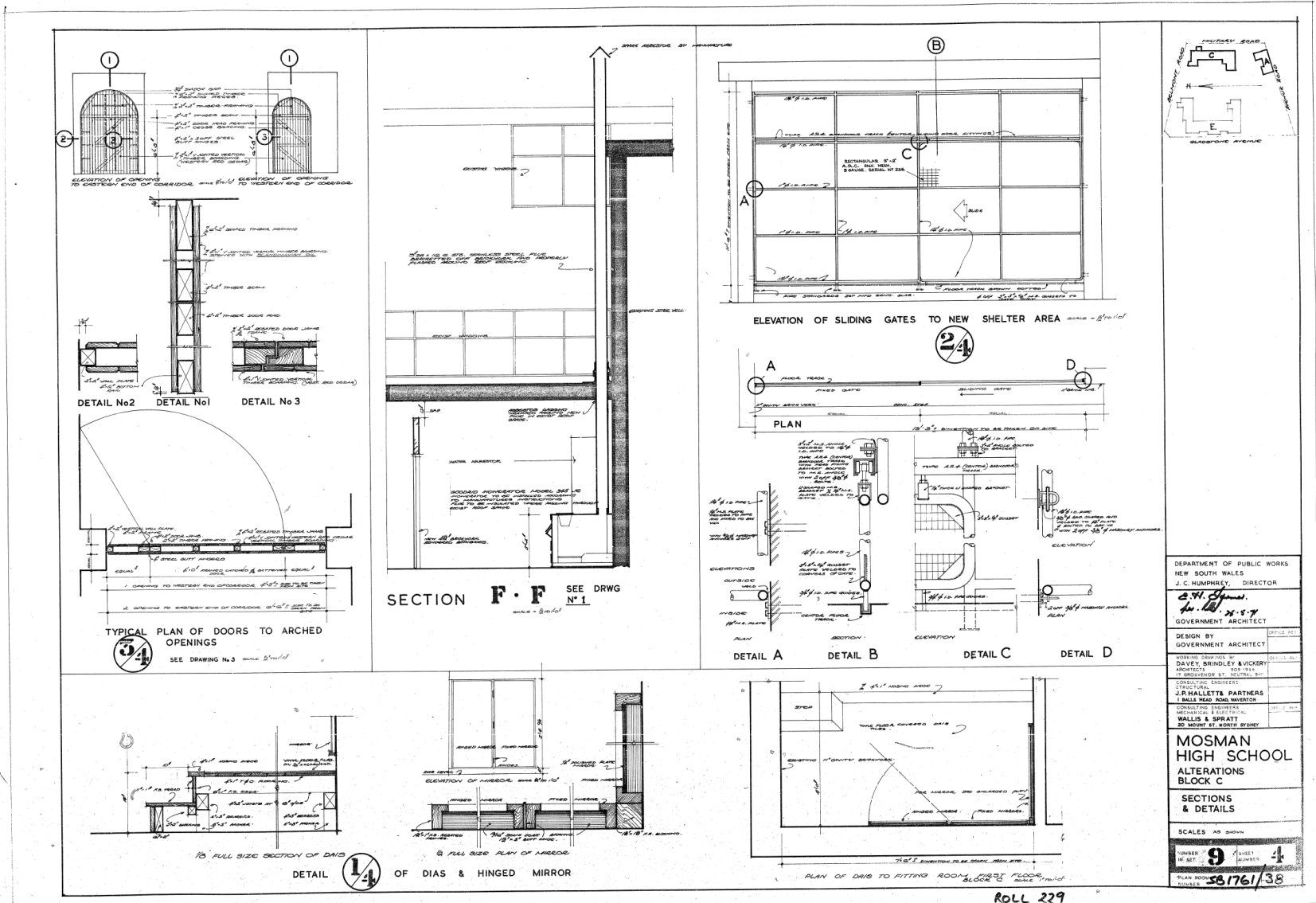
Block C Alterations - Ground & First Floors.pdf



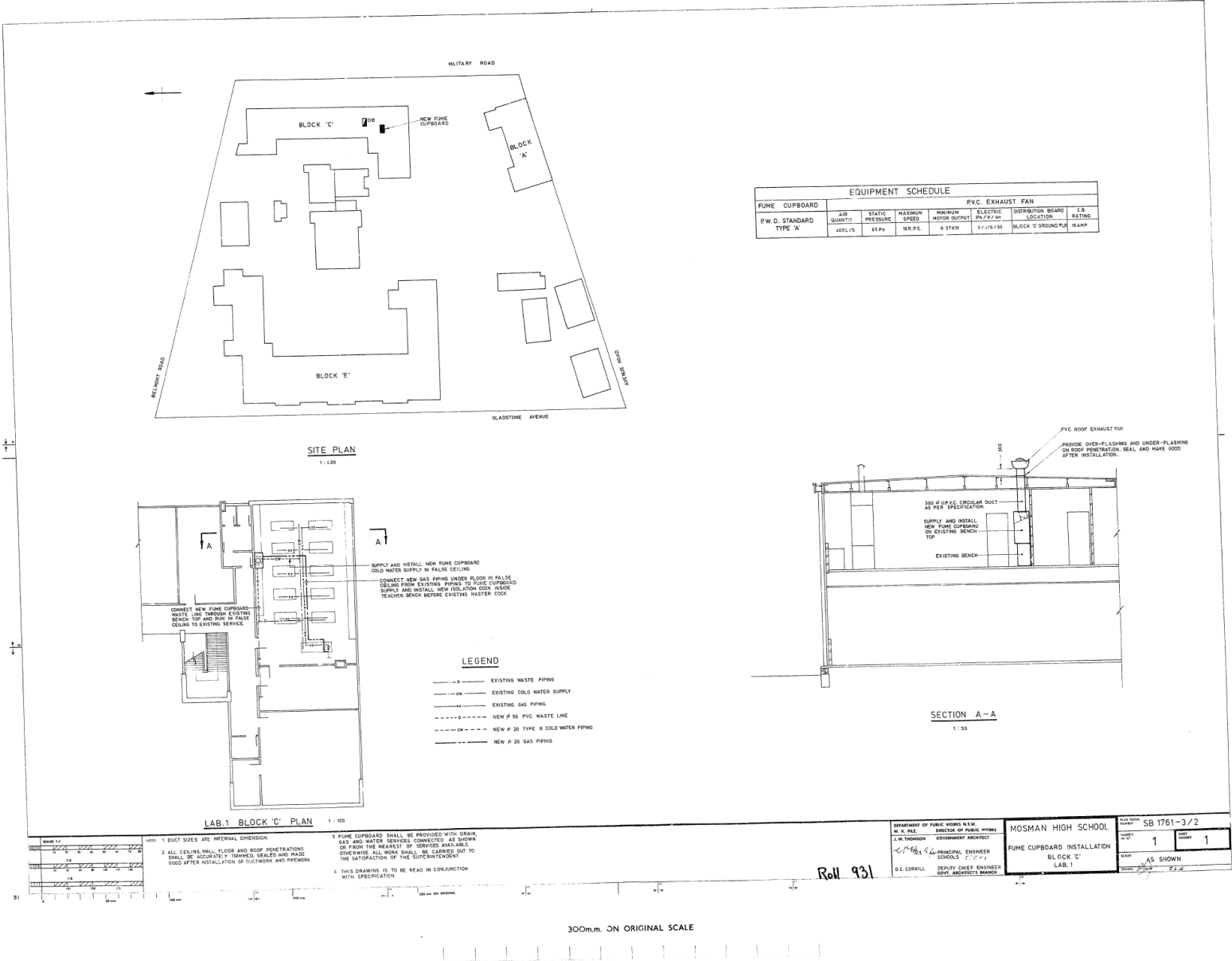
Block C Alterations - Reinforced Concrete Details.pdf



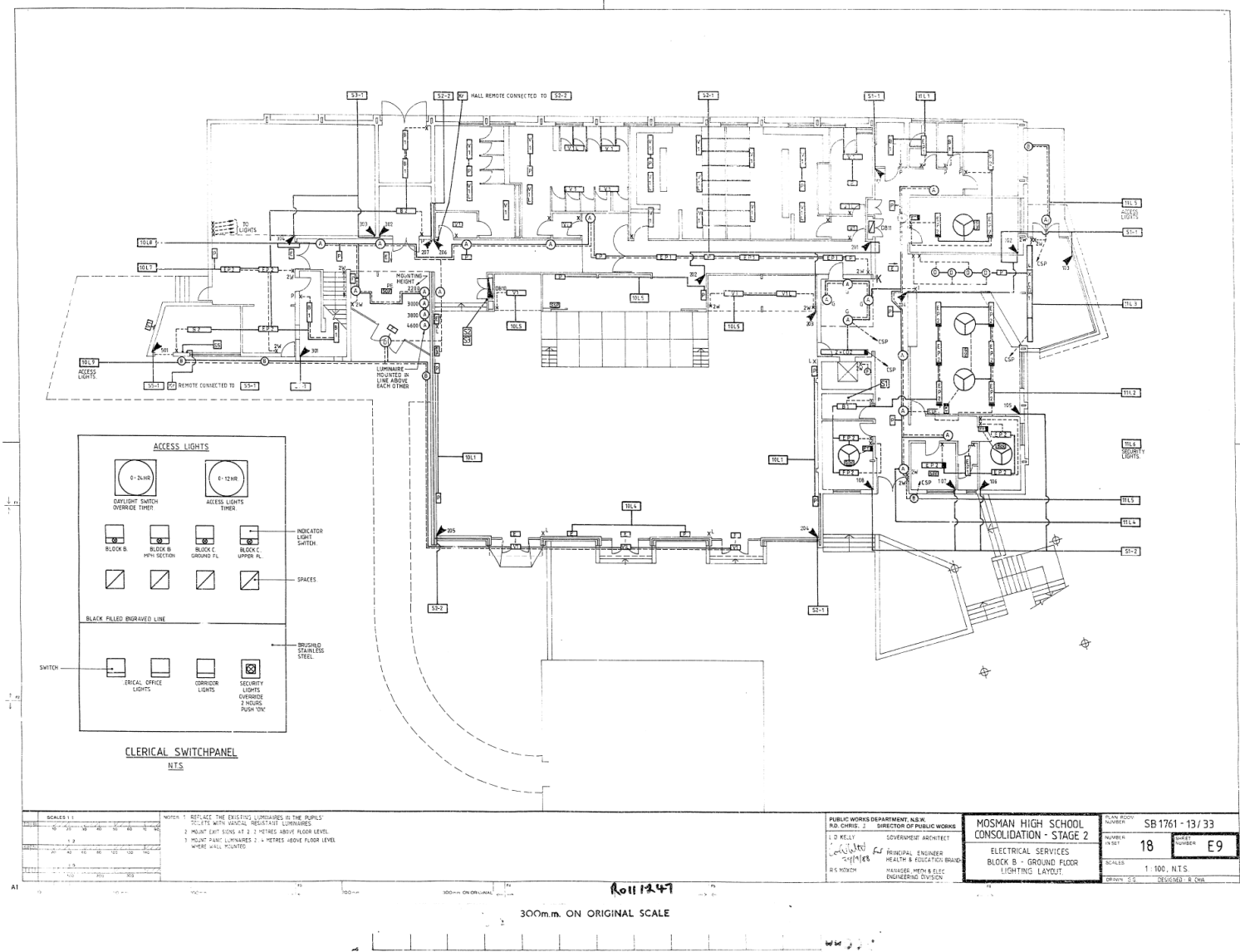
Block C Alterations - Sections & Details.pdf



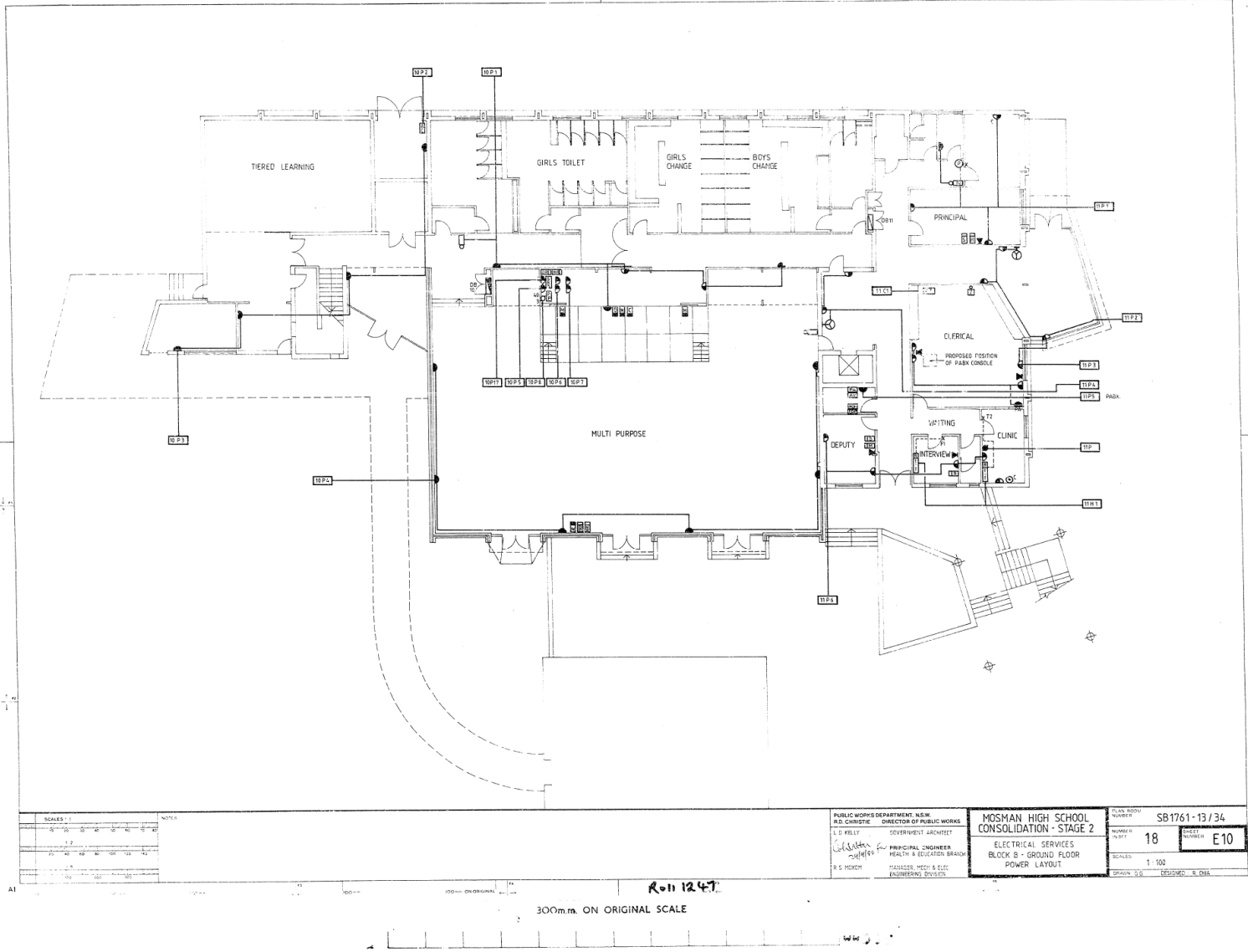
Block C Alterations - Sections & Details(2).pdf

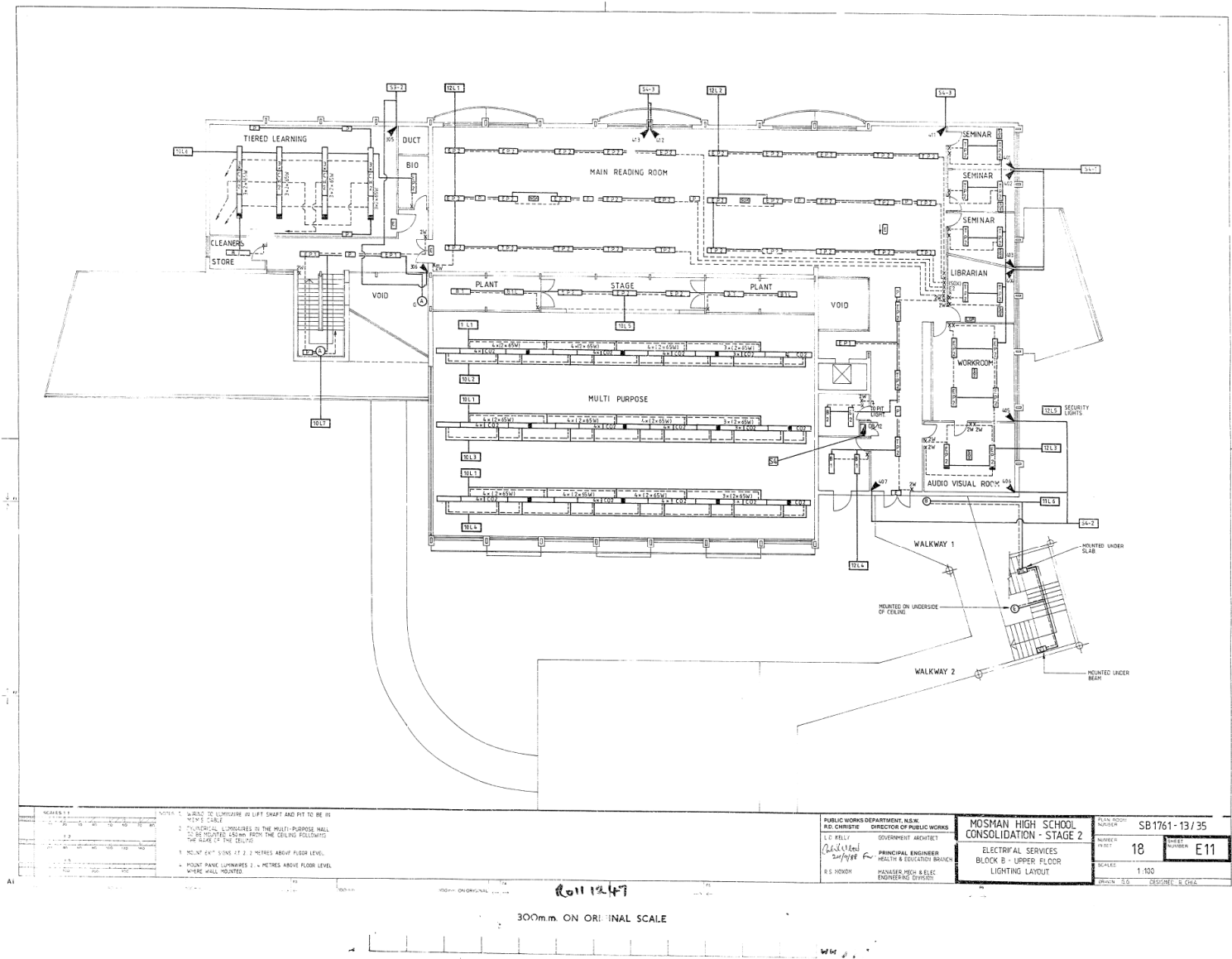


Block C Lab. I - Fume Cupboard Installation.pdf

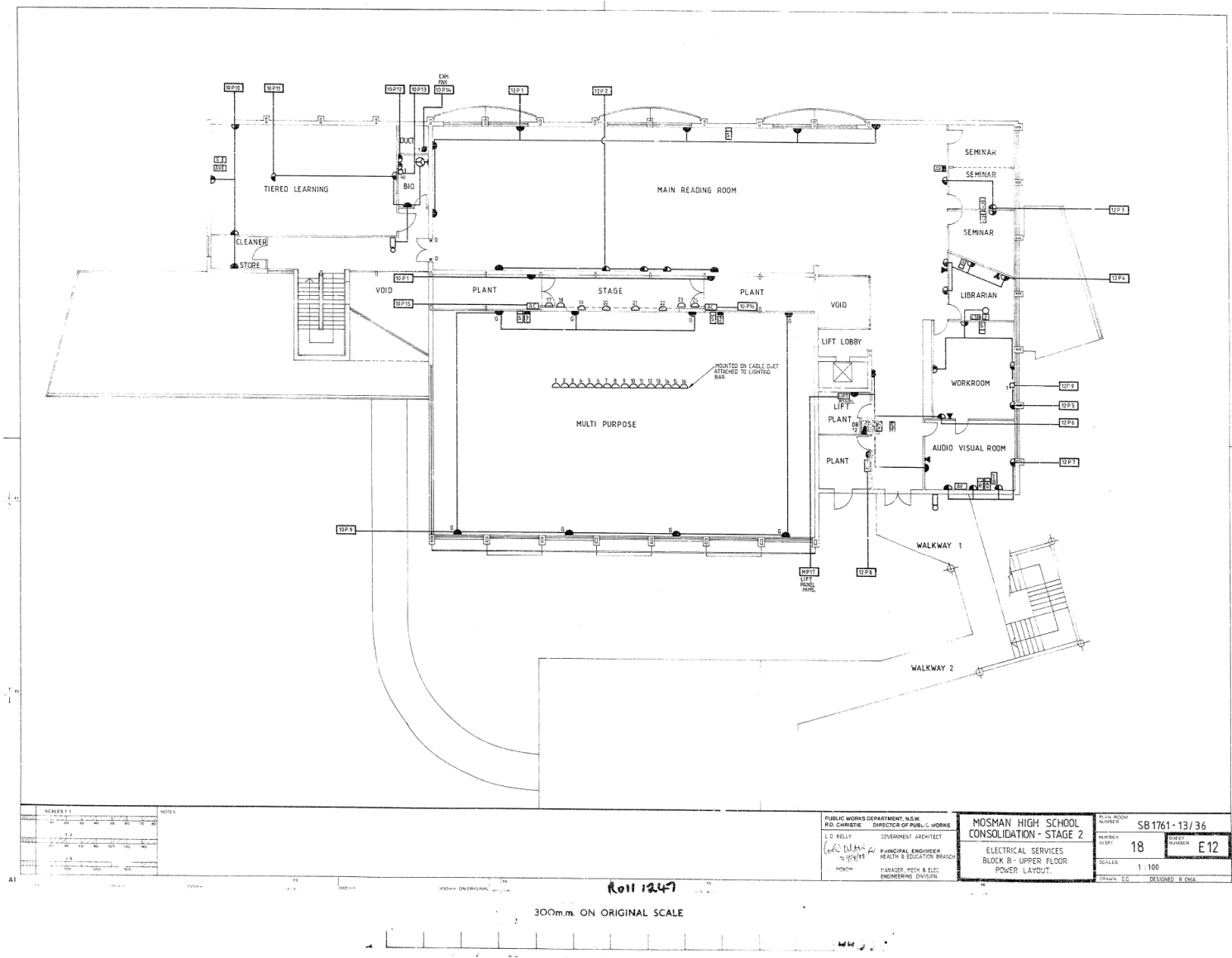


Consolidation - Stage 2 - Block B - Ground Floor Lighting Layout.pdf

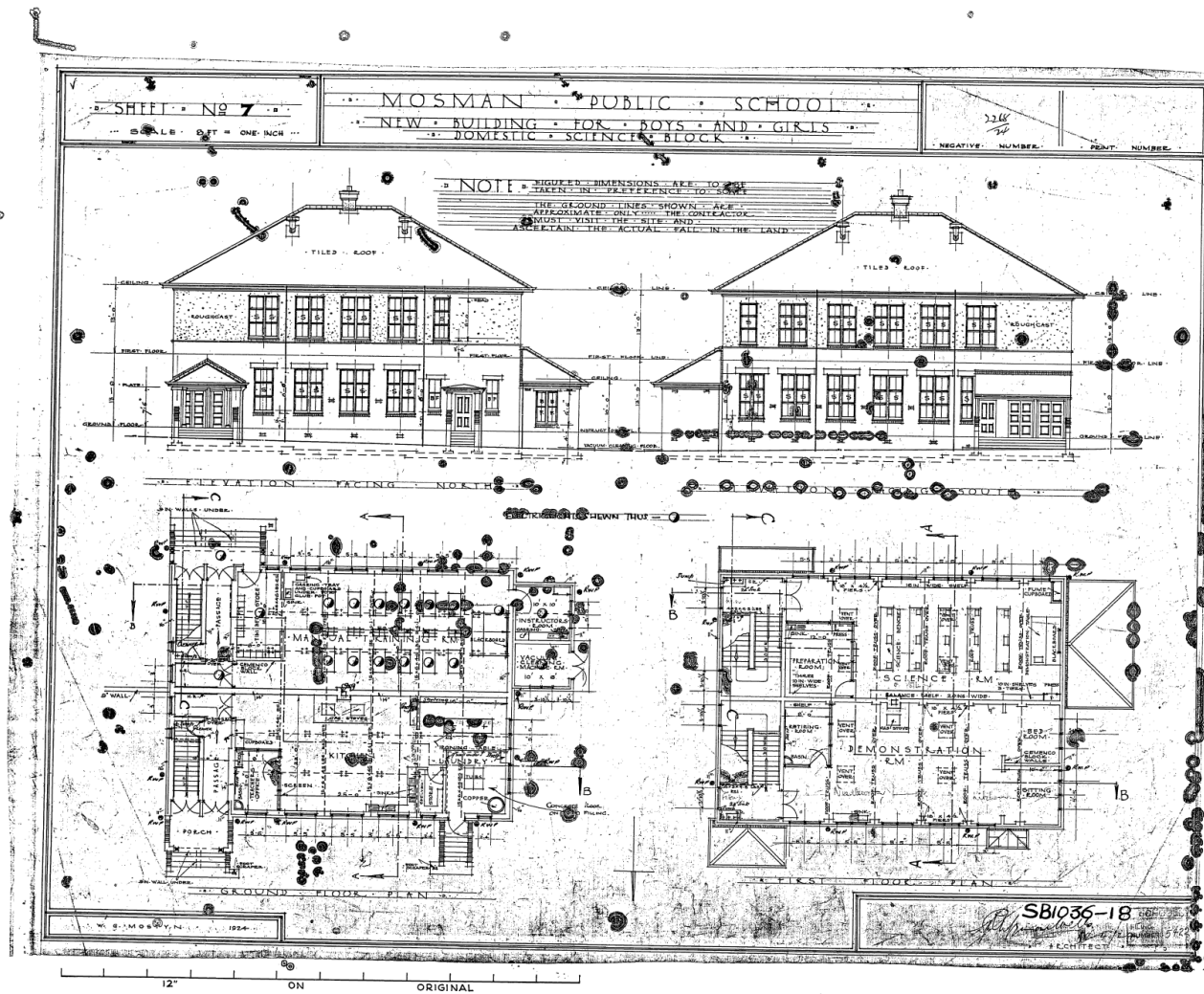




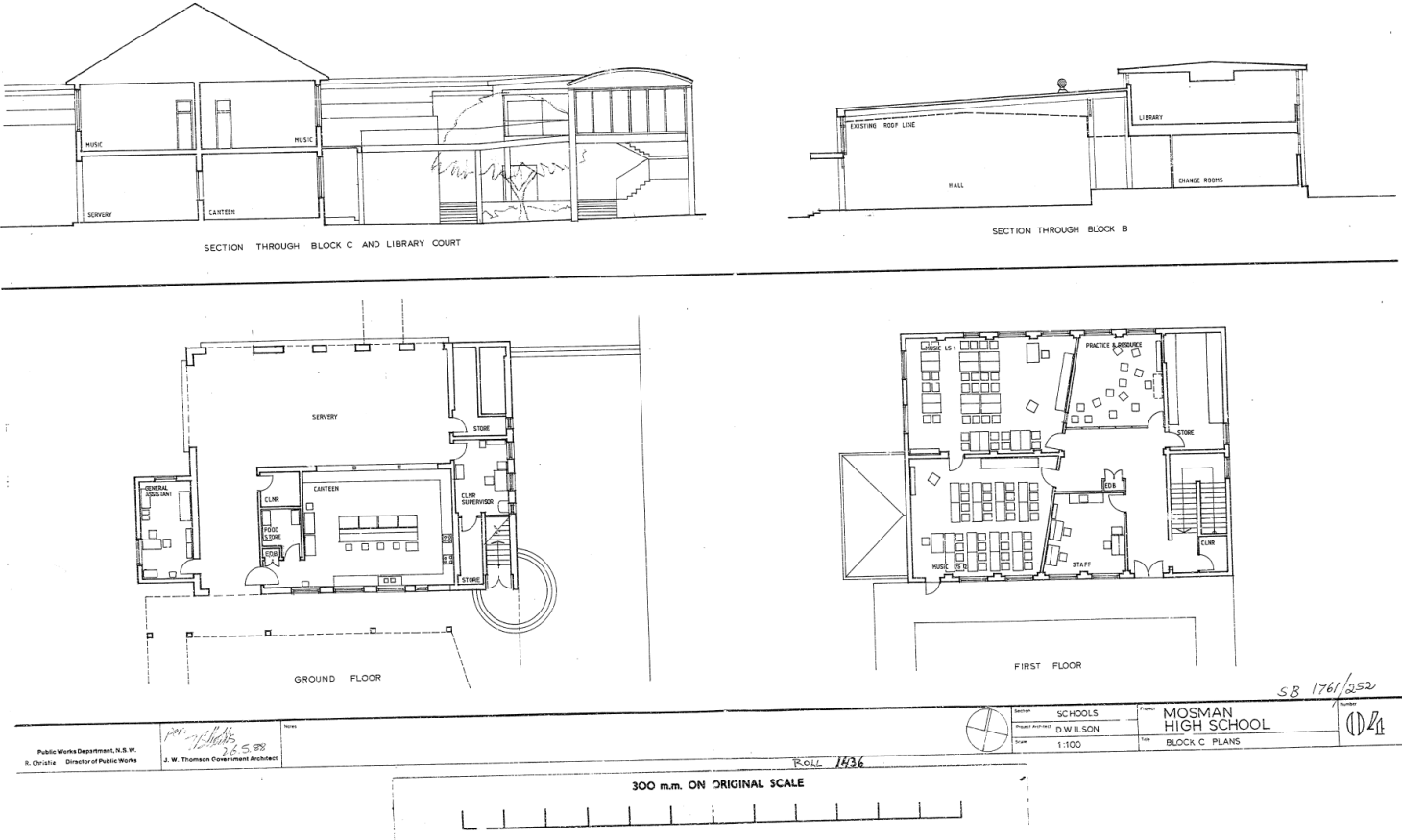
Consolidation - Stage 2 - Block B - Upper Floor Lighting Layout.pdf



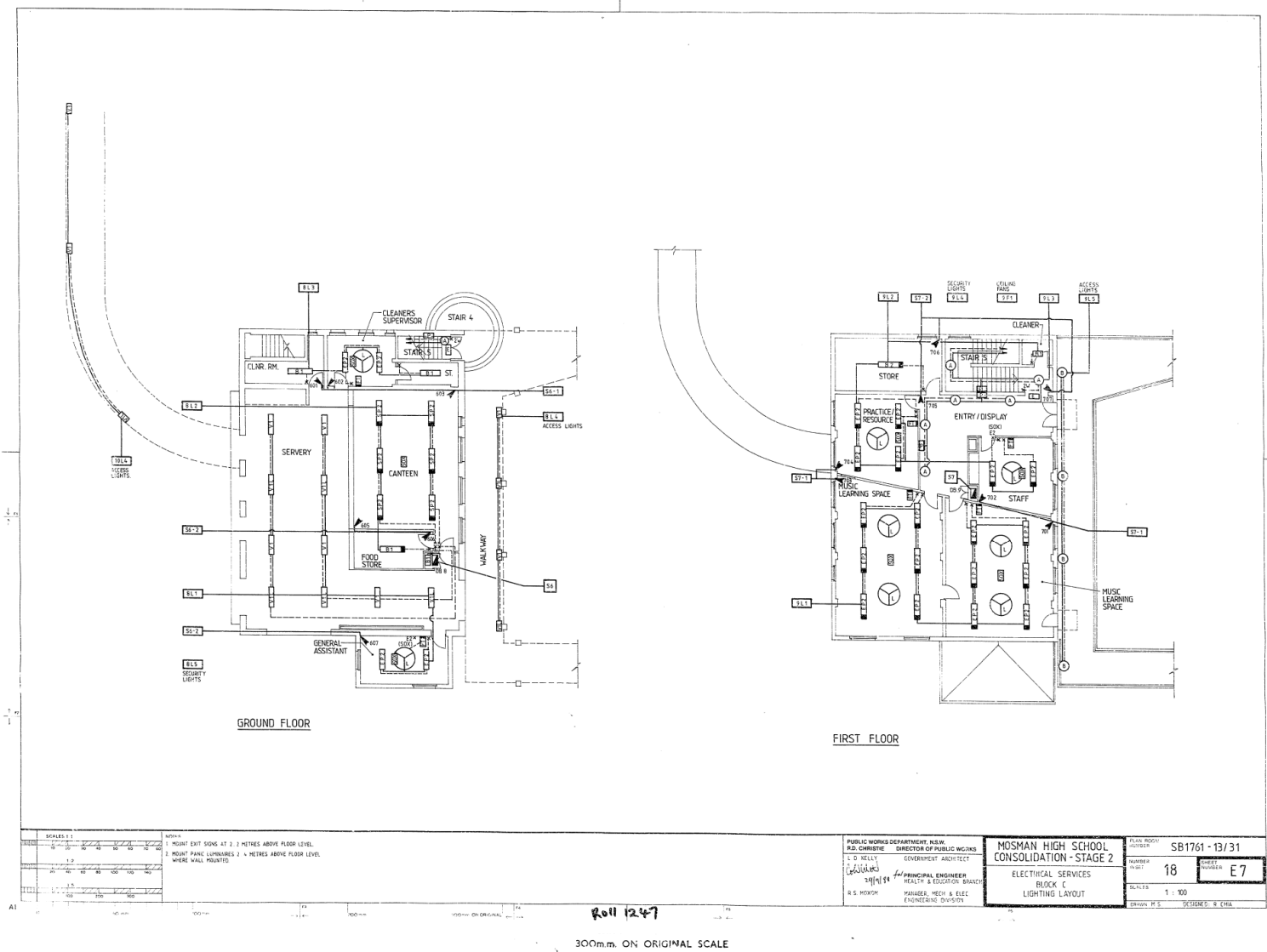
Consolidation - Stage 2 - Block B - Upper Floor Power Layout.pdf



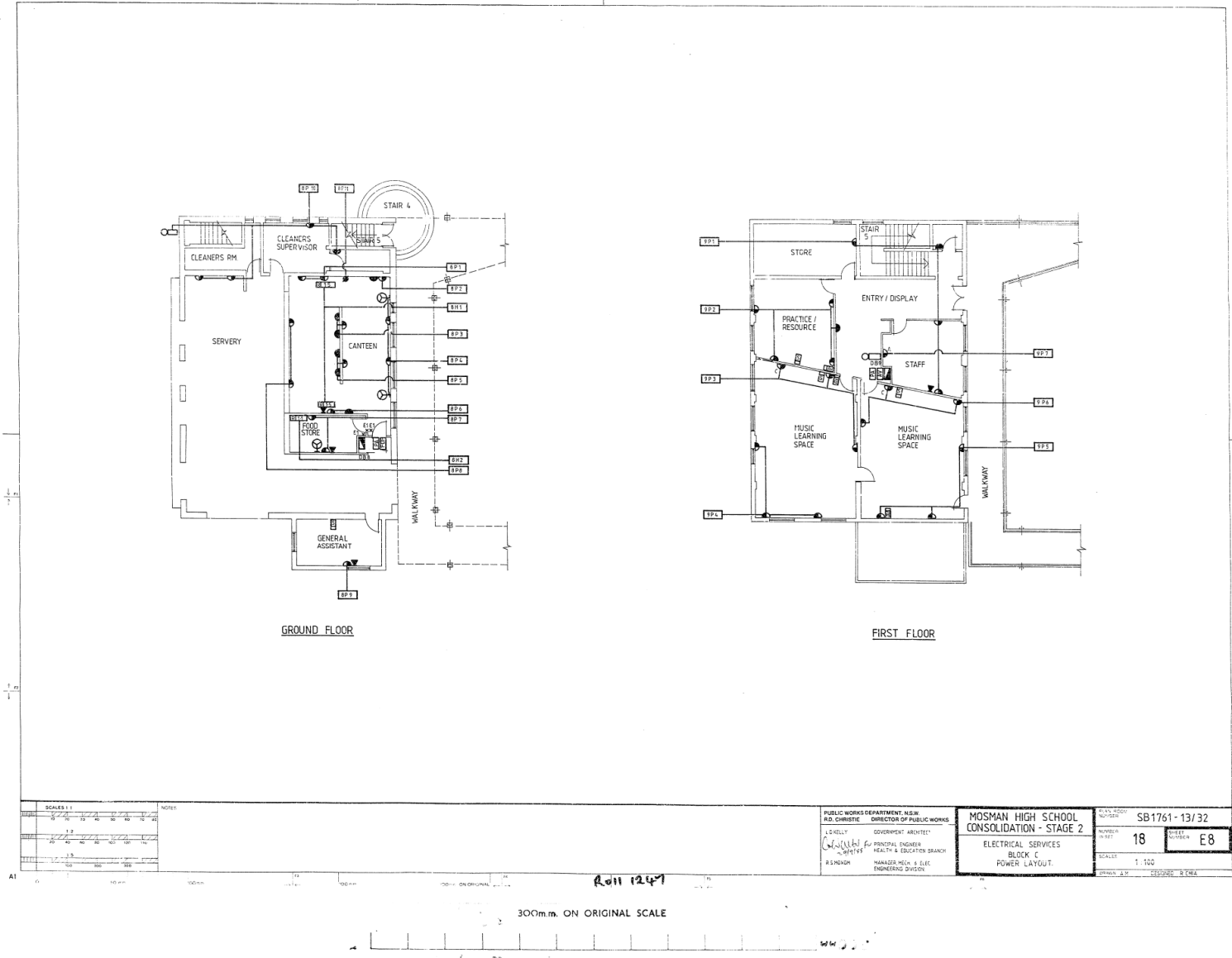
Original Architectural Drawings B00C - 1924 - Mosman ~ formerly Mosman Public School.pdf



Block C - Plans.pdf

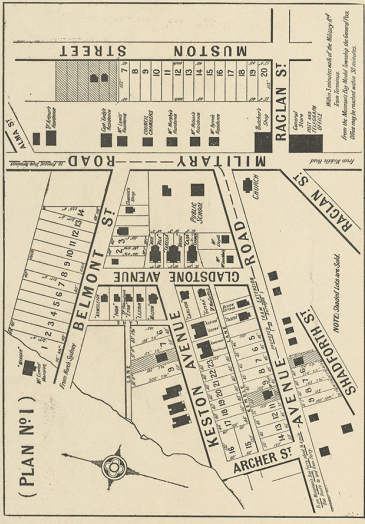


Consolidation - Stage 2 - Block C - Lighting Layout.pdf



Consolidation - Stage 2 - Block C - Power Layout.pdf


IN THE MIDDLE OF BEAUTIFUL VILLAGES



(PLAN NO 1)

Choice Building Sites

AUCTION SALE
ON THE GROUND,
SATURDAY, DECEMBER 7th. at 3.30 p.m.
MAGNIFICENT ALLOTMENTS OF LAND
IN THE
Mosman's Bay Model Township Estate,
ON VERY EASY TERMS,
viz., 10 per cent. Deposit; Balance by quarterly Promissory Notes, extending over 5 years, with interest at 5 per cent.



A VIEW OF MIDDLE HARBOUR FROM THE SUBDIVISION.

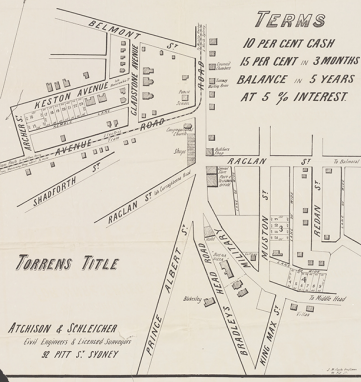
TORRENS' TITLE.
RICHARDSON & WRENCH, Ltd.,
98 Pitt Street, Sydney.
McINTYRE AND HORNING,
Wood's Chambers, 5 Moore Street, City.
Exchange Buildings, Walker Street, North Sydney.
LITHOS ON APPLICATION.
Beatty, Richardson & Co., Printers, Piling's Buildings, Sydney.

AUCTIONEERS IN CONJUNCTION.

nla.obj-230328608-1.jpg

MOSMAN'S BAY
MODEL TOWNSHIP
(On account of the Owner who is resident in England)
FOR UNRESERVED SALE BY AUCTION ON THE GROUND
on **SATURDAY 2ND MARCH 1901** at **3 O'Clock**
HARDIE & GORMAN IN CONJUNCTION WITH
AUCTIONEERS. H.W. HORNING & CO.
PITT ST.

TERMS
10 PER CENT CASH
15 PER CENT IN 3 MONTHS
BALANCE IN 5 YEARS
AT 5 % INTEREST



Torrens Title
Atchison & Schleyer
Civil Engineers & Licensed Surveyors
5 PITT ST. SYDNEY

nla.obj-230332429-1.jpg



SINSW Block C.jpg



MosmanLibrary img-314100319.tif



MosmanLibrary H038 1973 Block B.tif

Purcell New South Wales

Office 25, The Commons Central,
20-40 Meagher Street,
Chippendale, NSW 2008
Nominated Architect NSW:
Tracey Skovronek I I029

Purcell Tasmania

PO Box 37,
Hobart, TAS 7001
Nominated Architect:
Lucy Burke-Smith ARN 898 CC6606

Purcell Victoria

Level 3, 124 Exhibition Street,
Melbourne VIC 3000
Architect Director:
Tracey Skovronek 20440
ARBV Architectural Company Registration: C51926

Other studio locations:

*Hong Kong, Bristol, Cambridge, Canterbury,
Cardiff, Colchester, Leeds, London,
Manchester, Norwich, Oxford, York.*