

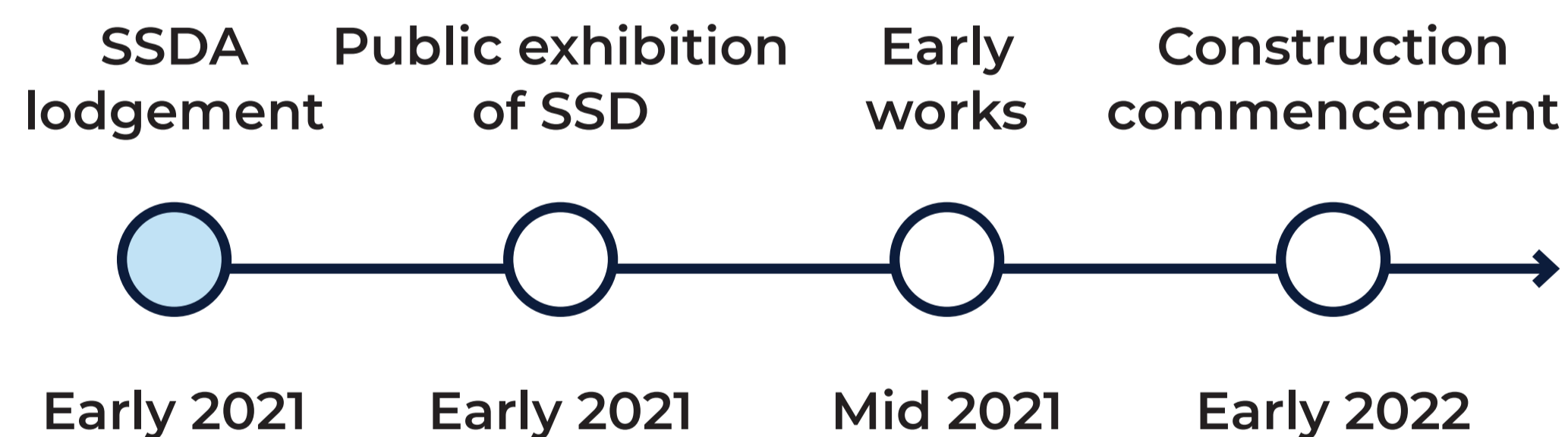
Project overview

A project is underway to upgrade Mosman High School to cater for projected enrolment growth and to provide students with new and improved educational facilities.

The State Significant Development (SSD) application has been lodged with the Department of Planning, Industry and Environment (DPIE) in early 2021.

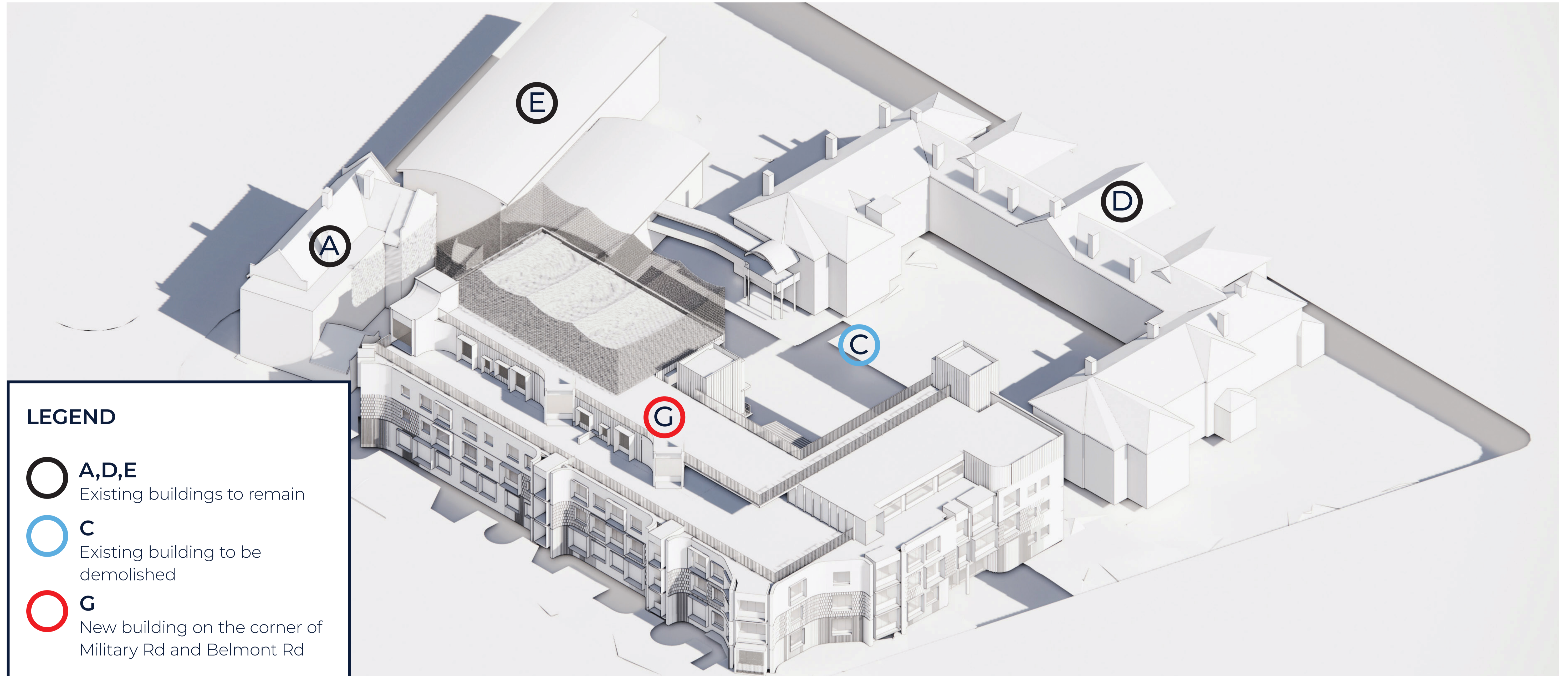
The project will deliver new homebase classrooms, a library, a multipurpose gym / hall, outdoor and rooftop play space, a canteen and administration and staff facilities.

Indicative project timeline



Artist impression of the Mosman High School upgrade

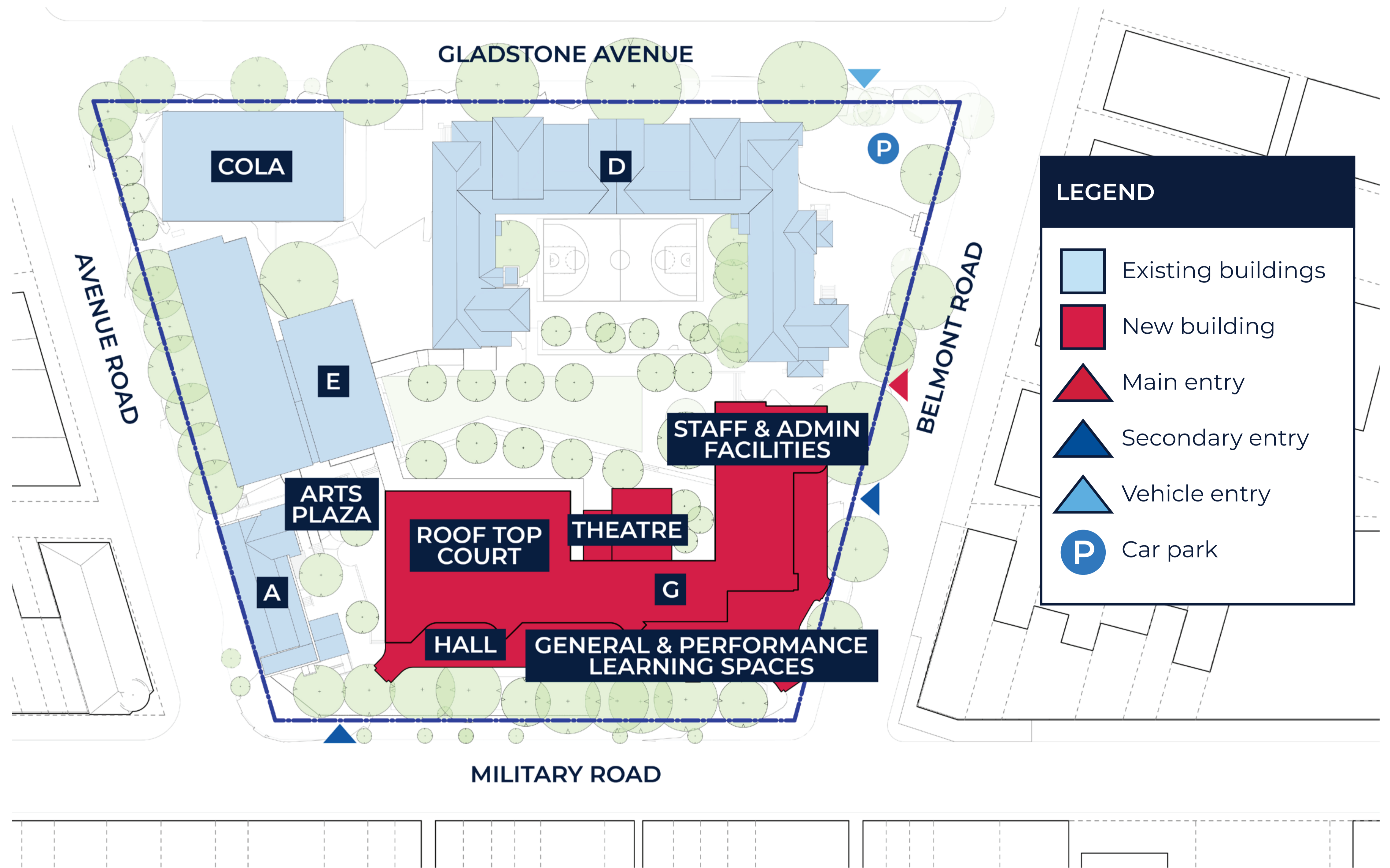
Artist impression



Mosman High School upgrade

For more information phone: 1300 482 651
Email: schoolinfrastructure@det.nsw.edu.au

Map of the proposed school upgrade

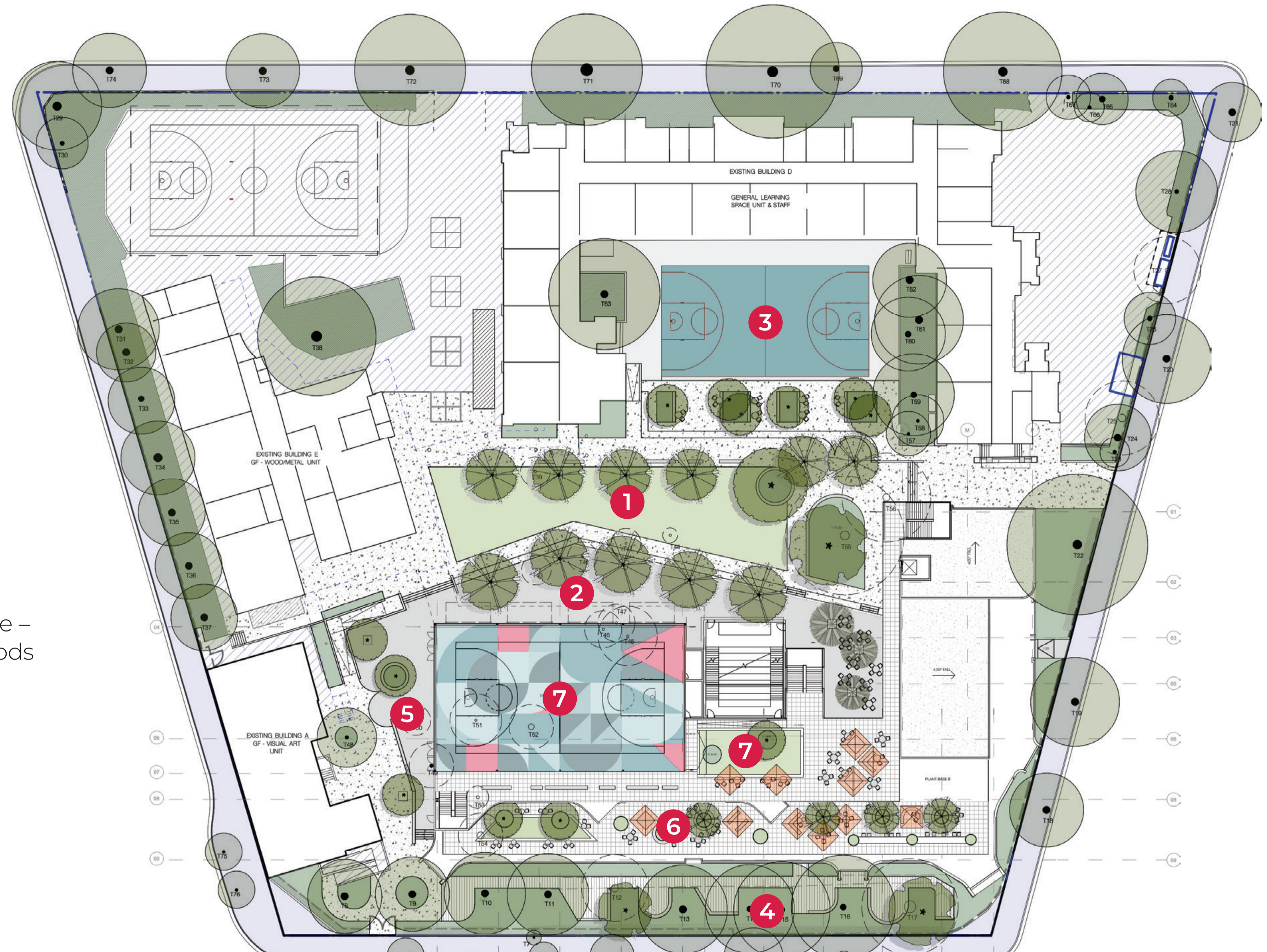


Mosman High School upgrade

For more information phone: 1300 482 651
Email: schoolinfrastructure@det.nsw.edu.au

Proposed landscape plans

- 1** Central lawn terrace
- 2** Hall forecourt
- 3** Existing basketball court to be retained
- 4** Military and Belmont Road landscape – retain trees, new path and seating pods
- 5** Arts plaza
- 6** Level 3 terrace landscaping
- 7** Level 4 rooftop sports court, terrace and lawn



Mosman High School upgrade

For more information phone: 1300 482 651
Email: schoolinfrastructure@det.nsw.edu.au

NSW Department of Education – School Infrastructure



Main entry



Corner of Military Road and Belmont Road



Military Road – Arts Plaza



Internal courtyard and theatre