

Moruya High School Support Unit

Information Pack – September 2025



View from covered walkway

The upgrade of Moruya High School will replace the temporary facilities currently used for the support unit with new permanent facilities.

The new Support Unit which is anticipated to open to students on Day 1 Term 2 2026 will be spread over 2 buildings and include:



7 permanent support classrooms with practical activities areas and break out spaces



covered outdoor learning area (COLA) with soft fall play surface



dedicated covered pick up and drop off bay



accessible toilets and changerooms with dedicated laundry

Message from your Principal

The new purpose-built support unit will provide a tailored environment that fosters inclusivity and enhances learning opportunities for students with disabilities. By offering specialised resources and dedicated staff, this unit will empower these students to reach their full potential and thrive academically and socially.

Mark English

School Principal
Moruya High School

For more information

Phone: 1300 482 651
Email: schoolinfrastructure@det.nsw.edu.au
Website: schoolinfrastructure.nsw.gov.au



Artist impressions of support unit



View from the entrance



Overhead view



View of outdoor play space

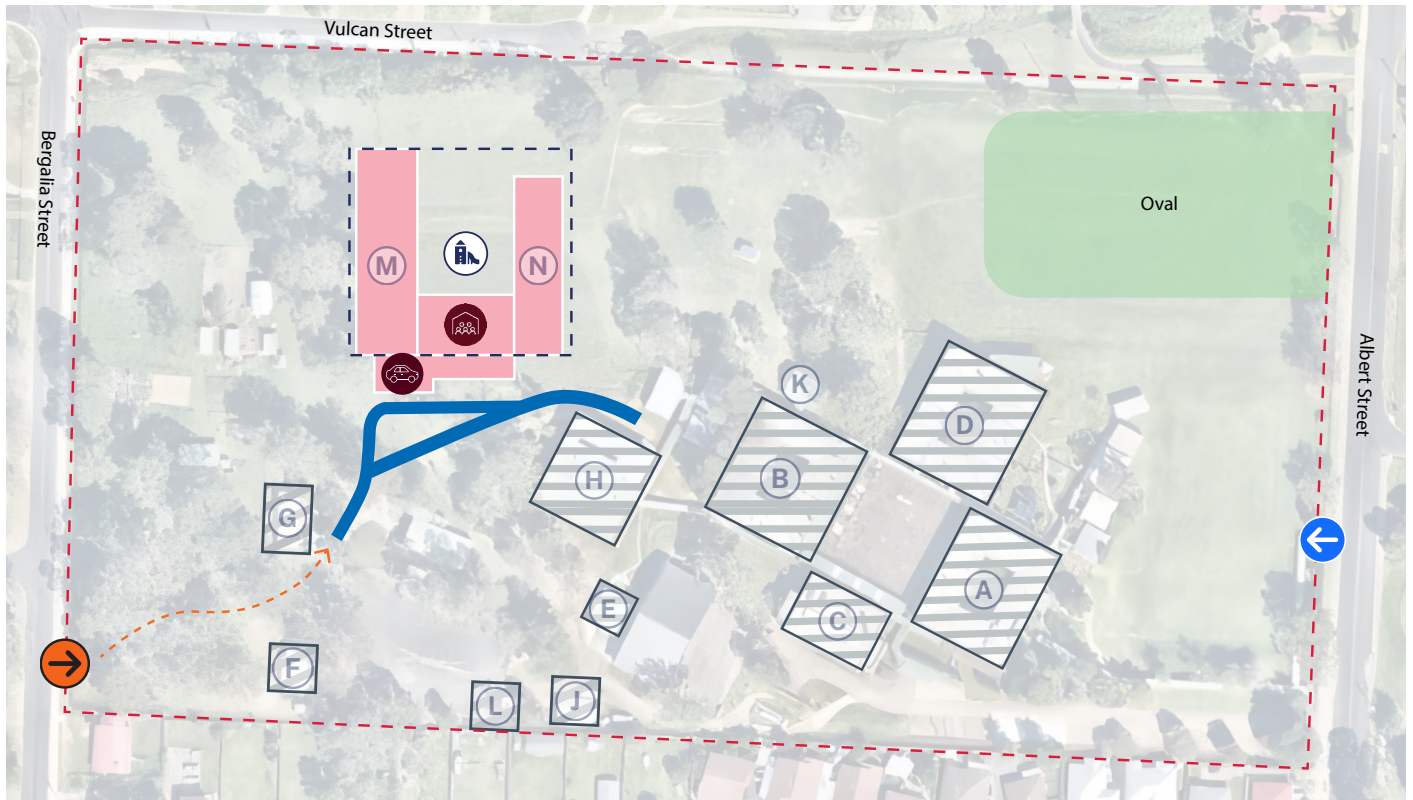


View of the support unit outdoor play space

Project timeline



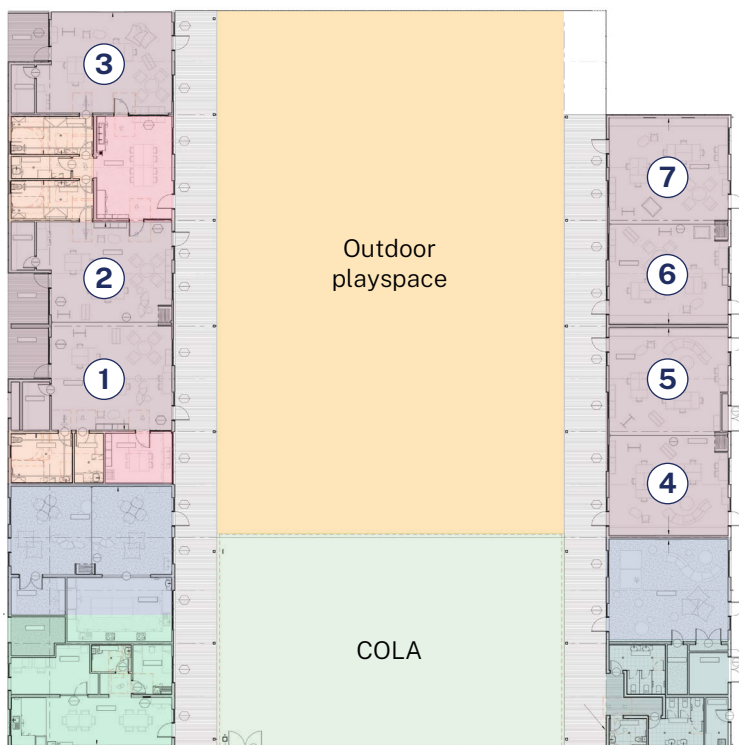
Site map



Legend

- | | | | | | |
|-----------------|--------------------|-----------------------|--------------------|-----------------------------|-----------------------|
| School boundary | Existing buildings | Support unit entrance | Outdoor play space | Existing roadway | Covered drop off area |
| Support unit | Support unit fence | School entrance | COLA | Accessible path and roadway | |

Floor plan



Legend

- | | |
|--|---|
| | Classrooms |
| | Multipurpose spaces |
| | Practical activities |
| | Staff and administration areas including sick bay |
| | Amenities including toilets and laundry |



View from the entrance

How will construction impacts be managed?



We will work with the contractor to manage impacts on the local community, and in close consultation with Moruya High School leadership to ensure that school operations continue with minimal disruption.

Deliveries will be scheduled to take place outside of the school's peak pick-up and drop-off times whenever possible.

For more information about how we manage construction impacts on our projects, please visit edu.nsw.link/ConstructionImpacts or scan the QR code.

Stay involved



You can find more information about the project at edu.nsw.link/MoruyaHS-SupportUnit or by scanning the QR code.

If you have any questions about this project, you can contact School Infrastructure during business hours on the contact details below.

Contact us

For more information about this project, contact School Infrastructure:

Website: schoolinfrastructure.nsw.gov.au

Email: schoolinfrastructure@det.nsw.edu.au

Phone: 1300 482 651