

# Moruya High School Support Unit

The upgrade of Moruya High School will replace the temporary facilities currently used for the support unit with new permanent facilities.

The new Support Unit which is anticipated to open to students on Day 1 Term 2 2026 will be spread over 2 buildings and include:



7 permanent support classrooms with practical activities areas and break out spaces



covered outdoor learning area (COLA) with soft fall play surface



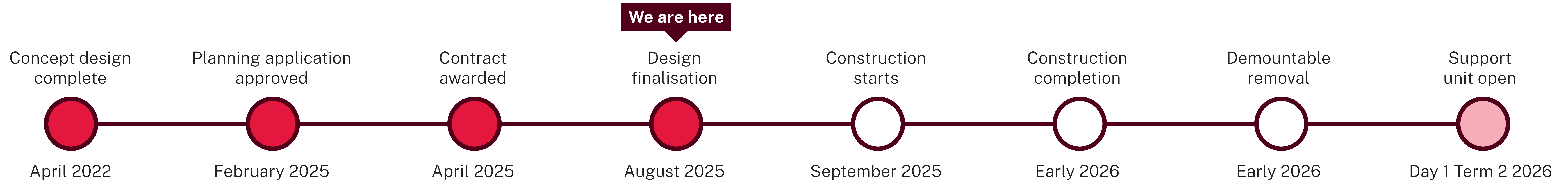
dedicated covered pick up and drop off bay



accessible toilets and changerooms with dedicated laundry



View from covered walkway



## Moruya High School Support Unit

For more information

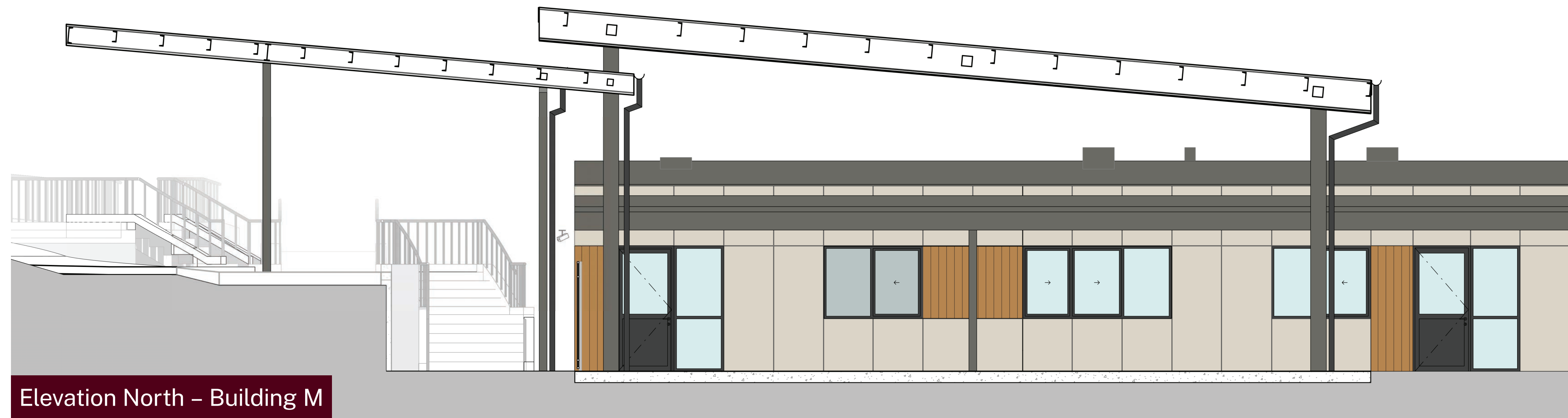
Phone: 1300 482 651

Email: [schoolinfrastructure@det.nsw.edu.au](mailto:schoolinfrastructure@det.nsw.edu.au)

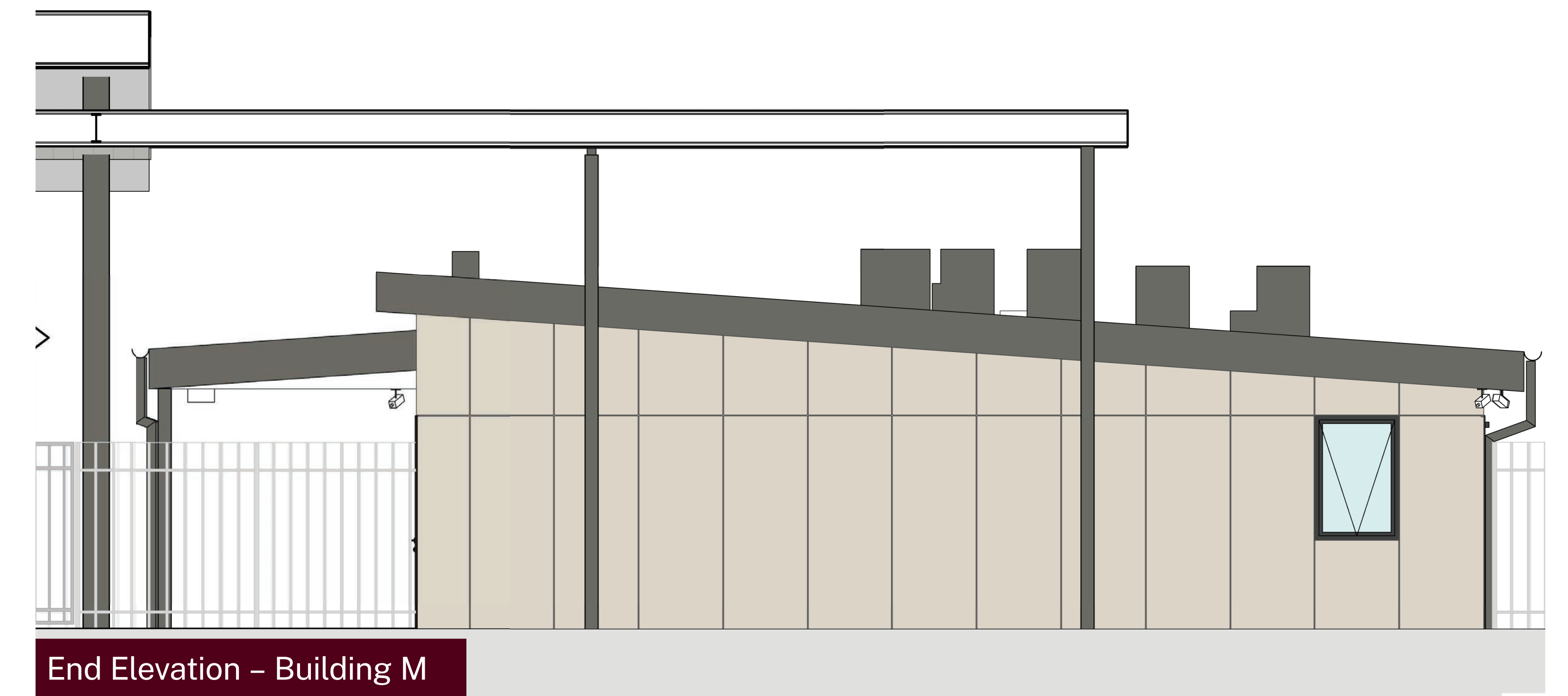
Website: [schoolinfrastructure.nsw.gov.au](http://schoolinfrastructure.nsw.gov.au)



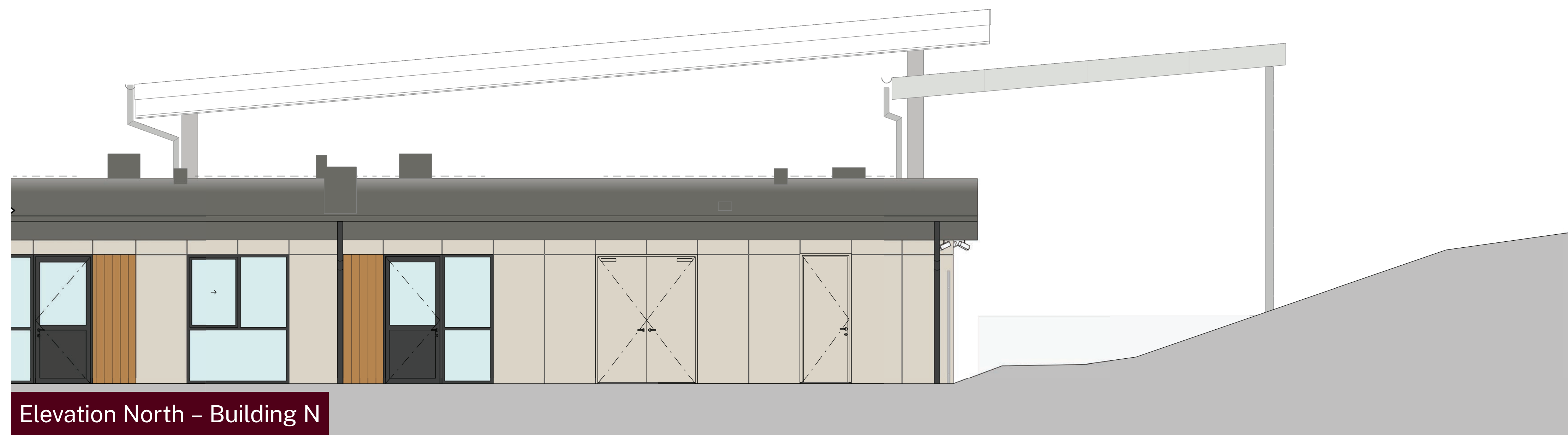
# Moruya High School Support Unit



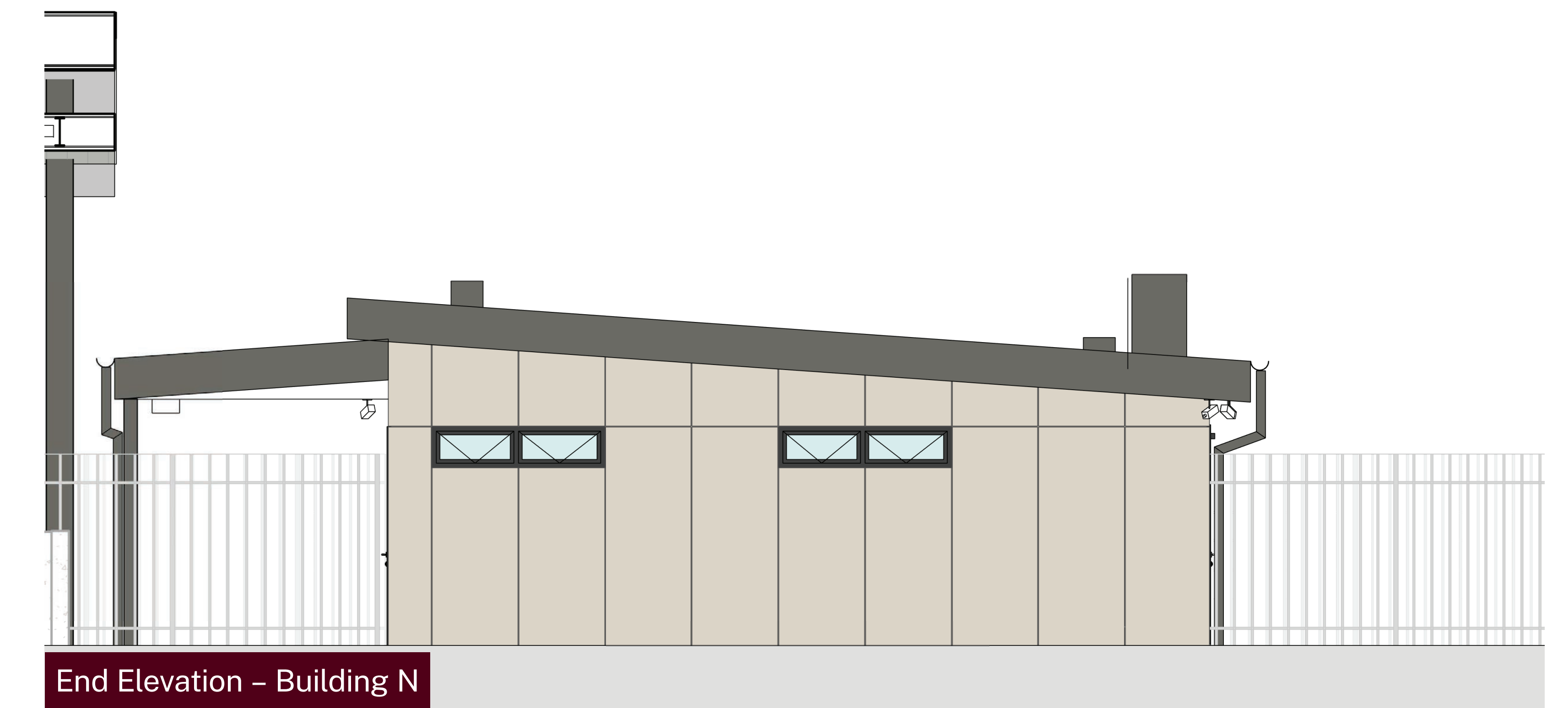
Elevation North – Building M



End Elevation – Building M



Elevation North – Building N



End Elevation – Building N

## Moruya High School Support Unit

For more information

Phone: 1300 482 651

Email: [schoolinfrastructure@det.nsw.edu.au](mailto:schoolinfrastructure@det.nsw.edu.au)

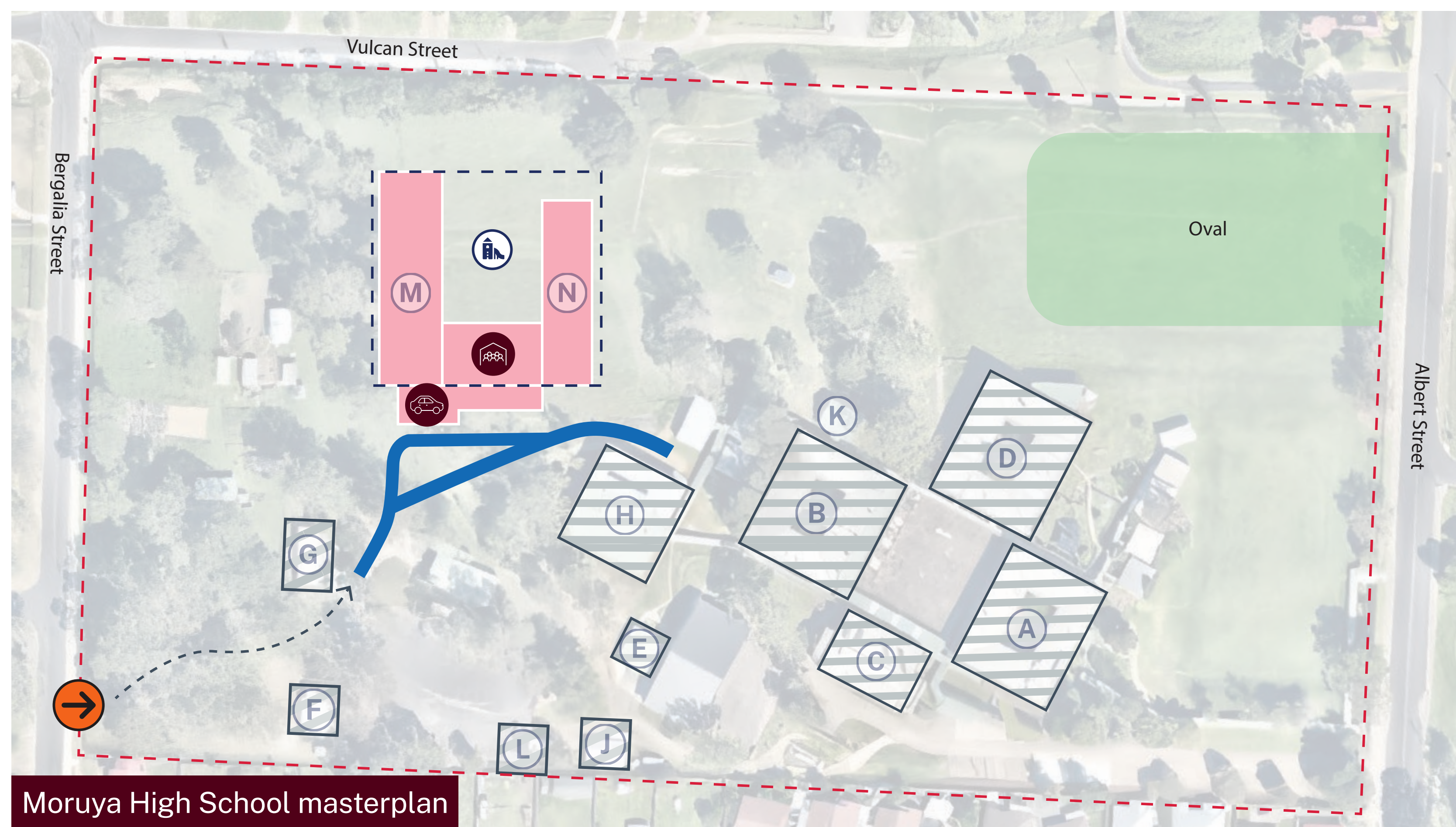
Website: [schoolinfrastructure.nsw.gov.au](http://schoolinfrastructure.nsw.gov.au)



# Moruya High School Support Unit

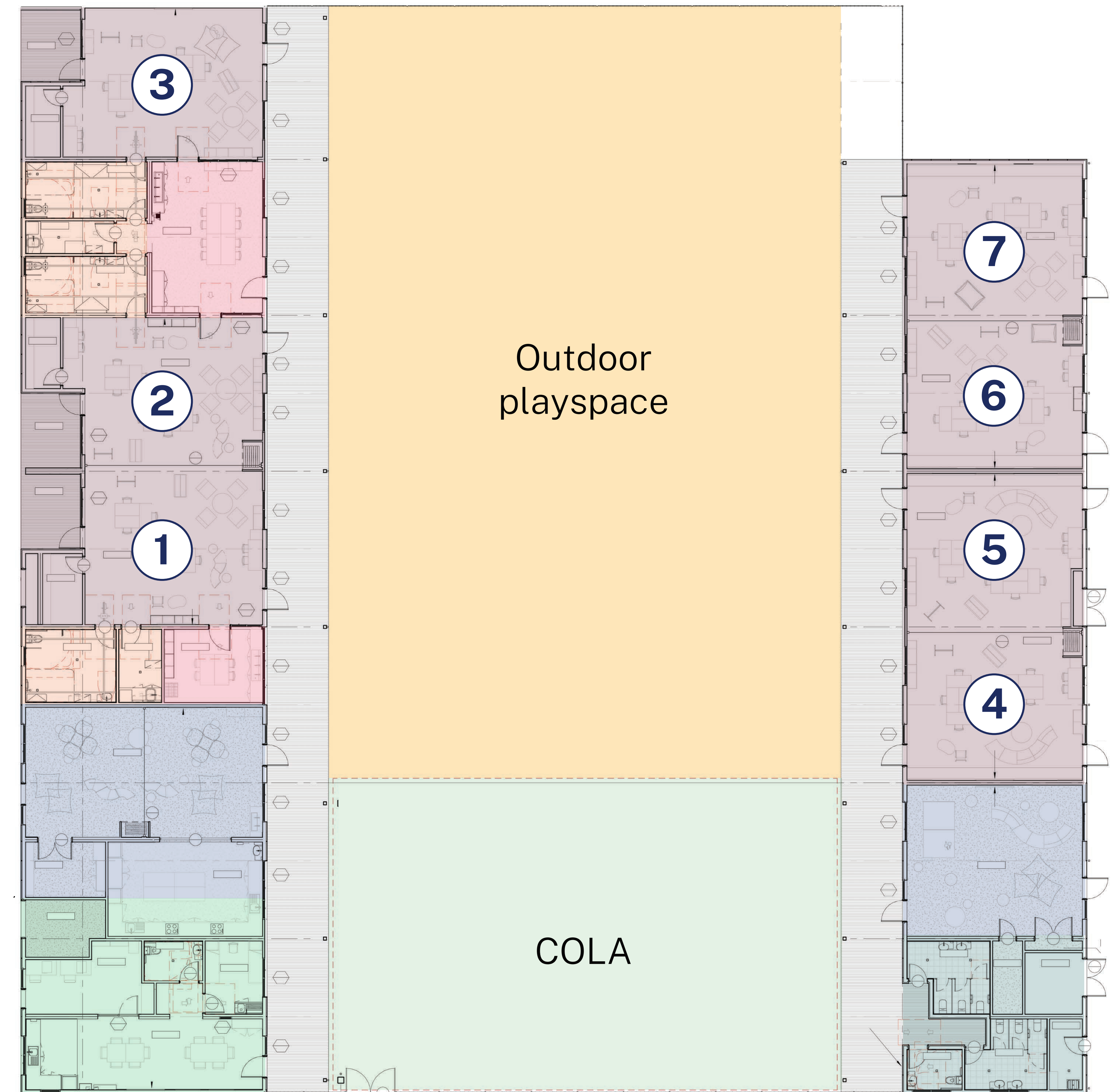
**Legend**

School boundary	Outdoor play space	Existing buildings	Existing roadway
Support unit	COLA	Support unit entrance	Accessible path and roadway
Support unit fence	Covered drop off area	School entrance	



**Legend**

Classrooms
Multipurpose spaces
Practical activities
Staff and administration areas including sick bay
Amenities including toilets and laundry



## Moruya High School Support Unit

For more information  
 Phone: 1300 482 651  
 Email: [schoolinfrastructure@det.nsw.edu.au](mailto:schoolinfrastructure@det.nsw.edu.au)  
 Website: [schoolinfrastructure.nsw.gov.au](http://schoolinfrastructure.nsw.gov.au)

