

# Monaro High School upgrade

## Welcome pack



Monaro High School performing arts centre

## Welcome to your new performing arts centre

We're excited that Monaro High School's new performing arts centre is now finished and ready for you to use.

The new two-storey performing arts centre features:



A theatre with capacity  
for **350** people



Health and physical  
education facilities



Flexible  
learning spaces



A new school  
administration unit

Thank you for your patience during construction. We are thrilled to deliver this project for the school community.

# New facilities

---



The new theatre in the performing arts centre



New facilities



The new theatre has capacity for 350 people and includes removable theatre seating to expand the area for wheelchairs when needed.

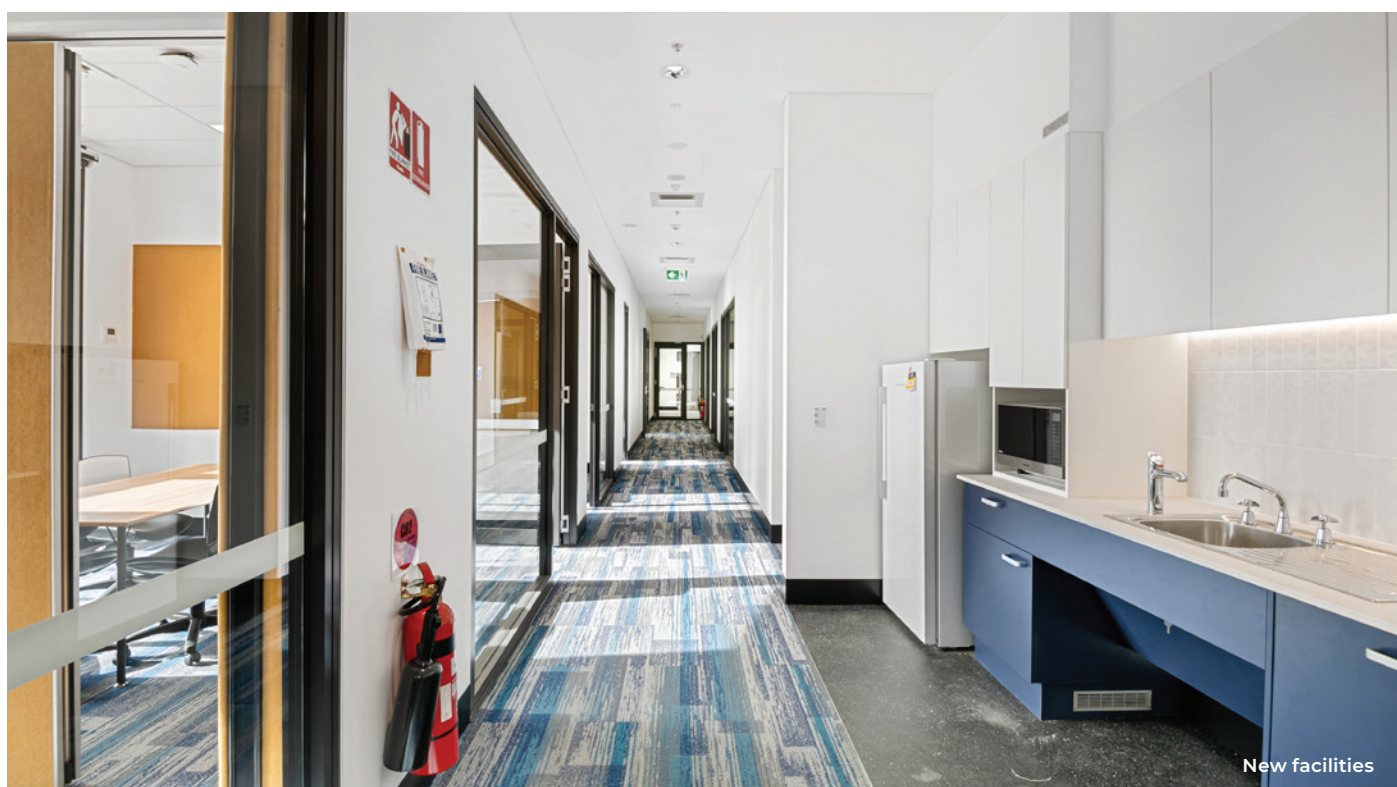


## Flexible learning environments

This exciting project has delivered new learning environments for the next generation of young minds. The new learning environments offer flexibility where teachers can provide more opportunities for student engagement.

The learning spaces:

- are adaptable to accommodate small or large groups
- provide accessibility to new technology in a variety of settings
- encourage a personalised learning experience so students learn at their own level and pace.







## Frequently asked questions

### What is being delivered as part of the Monaro High School upgrade project?

When completed, the upgrade will deliver:

- a new two-storey performing arts centre & PE facilities
- an innovation hub with 11 specialised learning spaces
- 31 new flexible learning spaces
- special education facilities
- a new semi-commercial kitchen
- wood and metal workshops upgrade
- refurbished staff facilities.

### What works are still to be completed?

Delays as a result of wet weather and Covid-19 mean the following works will continue in Term 3 2022:

- Refurbishing learning spaces in Building B South
- External landscaping.

### What are the construction hours for this project?

The standard construction hours for this project are 7 am to 5 pm Monday to Friday and 8 am to 4 pm Saturday. No work will take place on Sunday or public holidays, unless otherwise notified.

## Contact us

For more information about this project contact School Infrastructure NSW:

**Website:** [schoolinfrastructure.nsw.gov.au](https://schoolinfrastructure.nsw.gov.au)

**Email:** [schoolinfrastructure@det.nsw.edu.au](mailto:schoolinfrastructure@det.nsw.edu.au)

**Phone:** 1300 482 651

For information about school activities and operations, contact the school directly:

**Principal:** James Armitage

**Website:** [monaro-h.schools.nsw.gov.au](https://monaro-h.schools.nsw.gov.au)

**Email:** [monaro-h.school@det.nsw.edu.au](mailto:monaro-h.school@det.nsw.edu.au)

**Phone:** 02 6453 1500