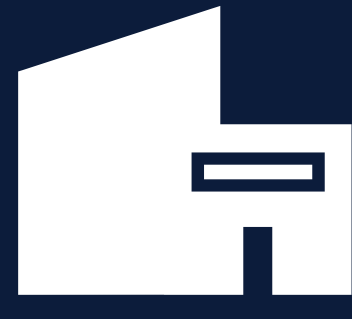


Project overview


The NSW Government is investing \$7 billion over the next four years to deliver more than 200 new and upgraded schools to support communities across NSW. This is the largest investment in public education infrastructure in the history of NSW.

The NSW Department of Education is committed to delivering new and upgraded schools for communities across NSW. The delivery of these important projects is essential to the future learning needs of our students and supports growth in the local economy.


We are in the process of designing an upgrade to Mona Vale Public School. The project will deliver:




A new Block R building
containing 6 learning spaces
and 3 support classes




Upgrading and refurbishing Blocks
B, D, E and H



A new Block S
Performing Arts Centre



A new staff and administration space
within Block R



Removing Blocks C and G and
improving open space and connectivity
throughout the school for all students



Artist impression of the Mona Vale Public School upgrade

Innovative learning spaces

Contemporary learning and teaching prepares students for a diverse and interconnected world. We are evolving the ways we teach our students new skills valued by a changing workforce, understand different ways students learn and support new ways of interacting with information through technology.

Innovative learning environments are flexible spaces designed and equipped to support contemporary learning and teaching.

What makes an innovative learning space?



Learning space

- Different zones (areas of a building or floors) are designed to support a range of activities sometimes grouped by subject area
- Varied furniture allows for student choice, comfort and flexibility
- Spaces are flexibly connected allowing students to work in varied group sizes
- Connection between indoor and outdoor learning spaces



Organisation

- Movement is encouraged for students and teachers to collaborate and interact
- More than one teacher may be available to students within the learning environment
- Students learn in classes, small groups or individually



Teaching and learning

- Learning is personalised
- Learning is connected across different subject areas
- There is a focus on creativity and innovation with students prototyping, testing and using technology in creative ways



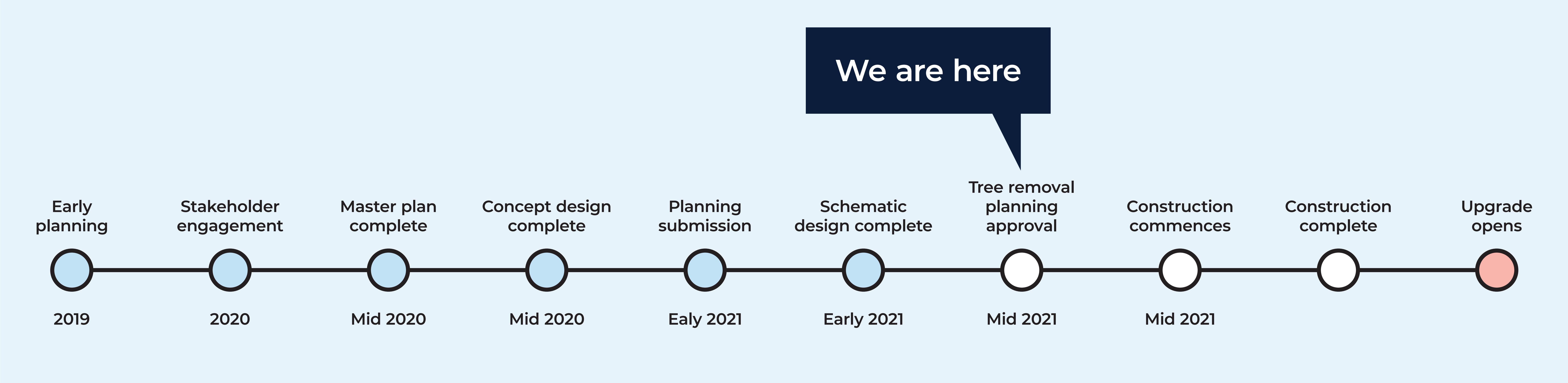
Technology

- Technology is integrated into spaces to extend learning opportunities
- WiFi is available everywhere including outdoors
- Specialist equipment is available for students to innovate, communicate and create

Mona Vale Public School upgrade

For more information phone: 1300 482 651
Email: schoolinfrastructure@det.nsw.edu.au

Timeline

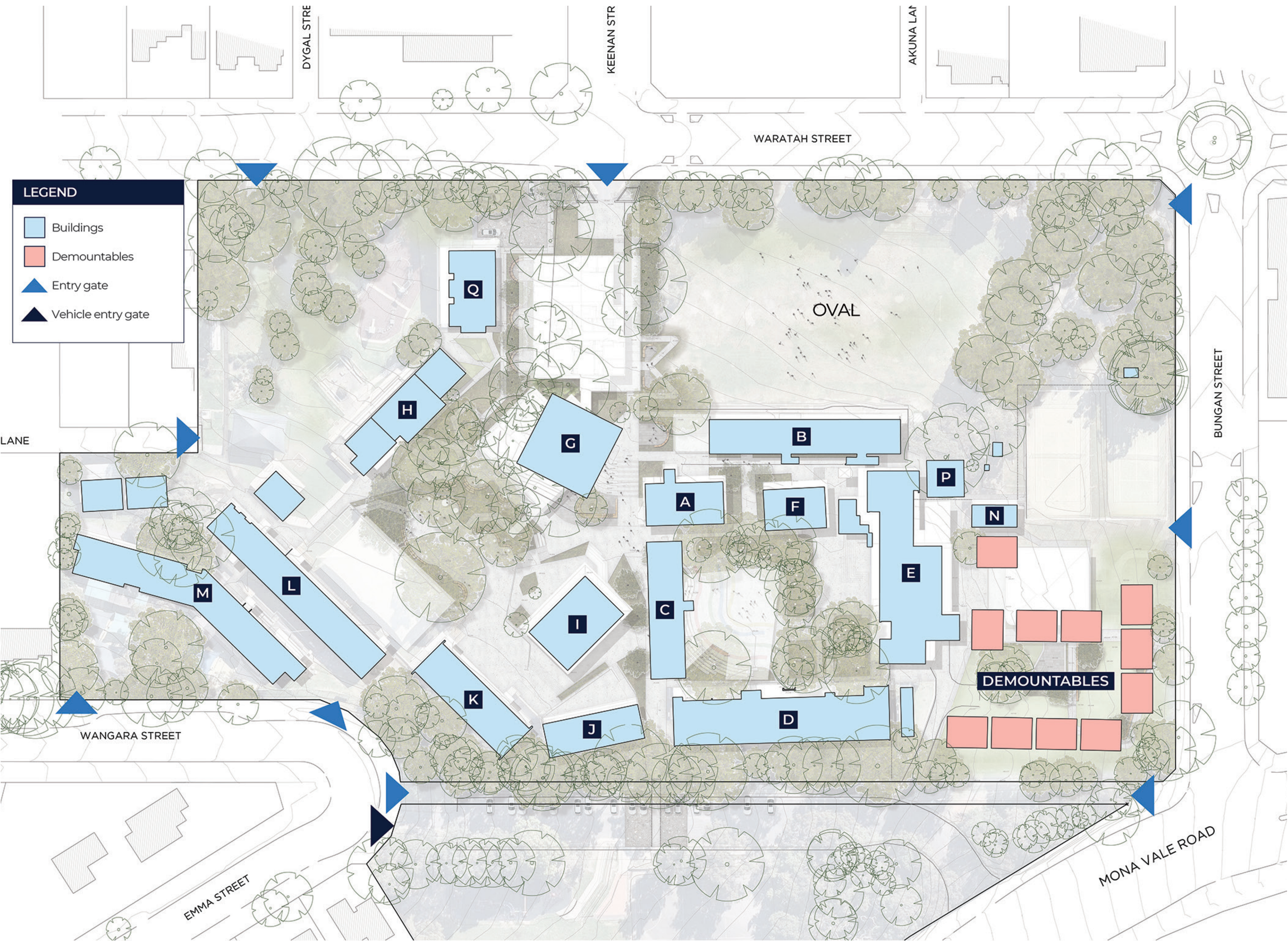


What's next?

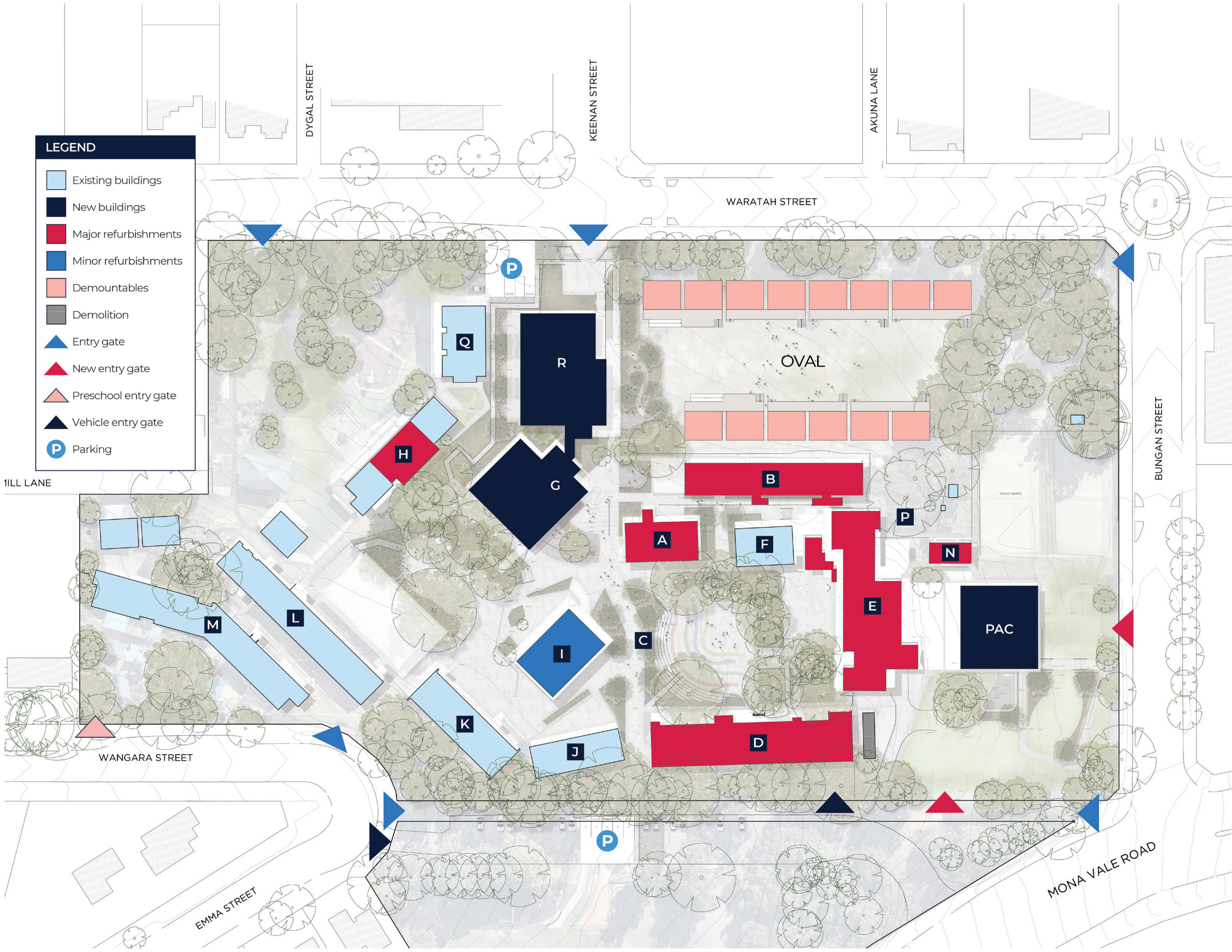
We will continue to work with key stakeholders so that we can deliver high quality education infrastructure for the local community. The next phase of the project involves the final design being completed, and preparation for construction to begin later in 2021.

We look forward to sharing more information with you as the project progresses. In the meantime you can stay informed by regularly visiting the project web page and you can contact us via email or phone if you have any questions or feedback about the upgrades.

Proposed site plan



Mona Vale Public School site plan – existing



Mona Vale Public School site plan – proposed



Mona Vale Public School upgrade

For more information phone: 1300 482 651
Email: schoolinfrastructure@det.nsw.edu.au

