

How do I get involved?

We are committed to working together with our school communities and other stakeholders to deliver the best possible facilities for students. Your feedback on this project is important to us.

For more information, questions or to make a comment please email us at schoolinfrastructure@det.nsw.edu.au or phone 1300 482 651. The health and safety of our students, staff and community are our priority.

We are temporarily changing some of the ways we keep you informed about our project in your community to account for social distancing measures. Until further notice we will share information with our communities online instead of in person. The SINSW website will continue to have up-to-date information about the project in your area. Our information hotline and email address continue to operate as normal.



For more information

We are committed to working together with our school communities and other stakeholders to deliver the best possible learning facilities for students. We encourage feedback from the school and local community about the Monna Vale Public School upgrade.

Stay informed



Website

Stay up to date by visiting the School Infrastructure NSW website schoolinfrastructure.nsw.gov.au



Email

Contact the Community Engagement team by emailing schoolinfrastructure@det.nsw.edu.au



Phone

Contact us between 9:00am and 5:00pm, Monday to Friday on **1300 482 651**

Mona Vale Public School

Information pack | March 2021



The NSW Government is investing \$7 billion over the next four years, continuing its program to deliver more than 200 new and upgraded schools to support communities across NSW. This is the largest investment in public education infrastructure in the history of NSW.

The NSW Department of Education is committed to delivering new and upgraded schools for communities across NSW. The delivery of these important projects is essential to the future learning needs of our students and supports growth in the local economy.

We are in the process of designing an upgrade to Monna Vale Public School. The project will deliver:



Upgraded teaching spaces and core facilities



Additional permanent teaching spaces



New staff and administration facilities



Relocation of temporary facilities



Improvements to accessibility



A performance space for shared use with the community

Progress summary

The project has now been granted approval to proceed. The master planning and concept design phases are complete. The schematic design process is underway. The schematic design process involves detailing the concept design to a greater level of completion. Following schematic design, detailed design will commence which is the final stage in the design process.

A construction contract was tendered in late 2020 and will close in early 2021. Site inspections and site walks have taken place to allow contractors to inspect the site before tendering.

Next steps

A contract for a construction company to deliver the project will be awarded following a detailed review process.

We have applied to Northern Beaches Council to remove some trees as part of the project. To find out more information and have your say on our development application, please visit the Northern Beaches Council website: www.northernbeaches.nsw.gov.au/planning-and-development.

Frequently asked questions

What does the project involve?

As part of the project, we are constructing new and refurbished fit-for-purpose learning spaces. This includes:

- Building a new Block R building containing 6 learning spaces and 3 support classes
- Upgrading and refurbishing Blocks B, D, E and H
- Adding a new Block S Performing Arts Centre
- Building a new staff and administration space within Block R
- Relocating 11 temporary classrooms
- Removing Blocks C and G

We will also be undertaking extensive landscaping to improve accessibility throughout the school, as well as creating new outdoor play and learning spaces.

Why will be there less classrooms?

The new classrooms as part of the project will be a more appropriate size for students learning at Mona Vale Public School.

Even though there are fewer classrooms, the classrooms are built as innovative learning spaces which means there is more space for practical and activity-based learning.

How big will the Performing Arts Centre be?

The new Performing Arts Centre will provide space for an audience of approximately 200 seated visitors and will provide theatre performance space and a space for music rehearsals and dance performances. The performance space will complement the existing school hall and provide dedicated performing arts space for the school and community.

How will the Performing Arts Centre work?

School Infrastructure NSW are working with Northern Beaches Council to fund and deliver the Performing Arts Centre to be located at the school. Once complete, the performance space will be available for use by the school and wider community.



Why are you removing trees as part of the project?

We are proposing to remove some trees on the school site to accommodate the building and upgrades. We recognise the important role that trees play on the school site and we will preserve as many as possible as part of the project. We will also be planting new trees as part of the extensive landscaping phase of the project.

Will you be preserving heritage features of the school?

We recognise the many heritage features of the school that celebrate Mona Vale Public School's legacy and history, and we will continue to work in close consultation with the Principal to preserve the heritage features on the school grounds.

How will the project be sustainable?

We acknowledge the important part that sustainability has in the construction and lifecycle of new schools and facilities. We will be targeting 4 star Green Star accreditation for this project which is a Green Building Council of Australia certification that rates how sustainable a facility is.

What happens to the materials from the buildings and items that will be removed?

In keeping with our commitments to sustainability, we will investigate options to recycle and repurpose all materials we remove as part of this project.

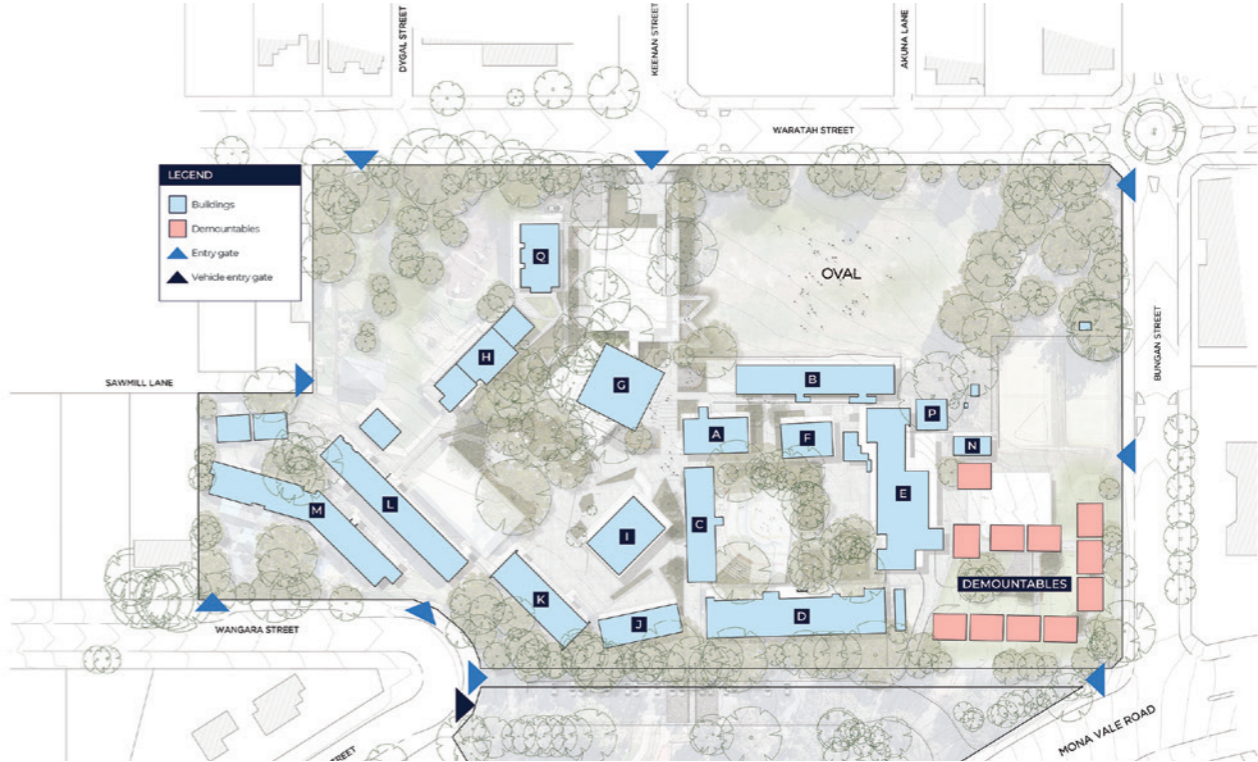
When will construction start?

Construction on the Mona Vale Public School upgrade is expected to start in mid 2021.

How will the school community be kept safe during construction?

The safety of the school's students, staff, visitors and the local community is our highest priority. Construction planning will be designed so there is minimal impact on school operations. Safety measures will be in place to separate the construction site from areas occupied by the school and ensure students are unable to enter construction areas. There will be regular consultation with the school to discuss construction progress.

Mona Vale Site Plan – existing



Mona Vale Site Plan – proposed

