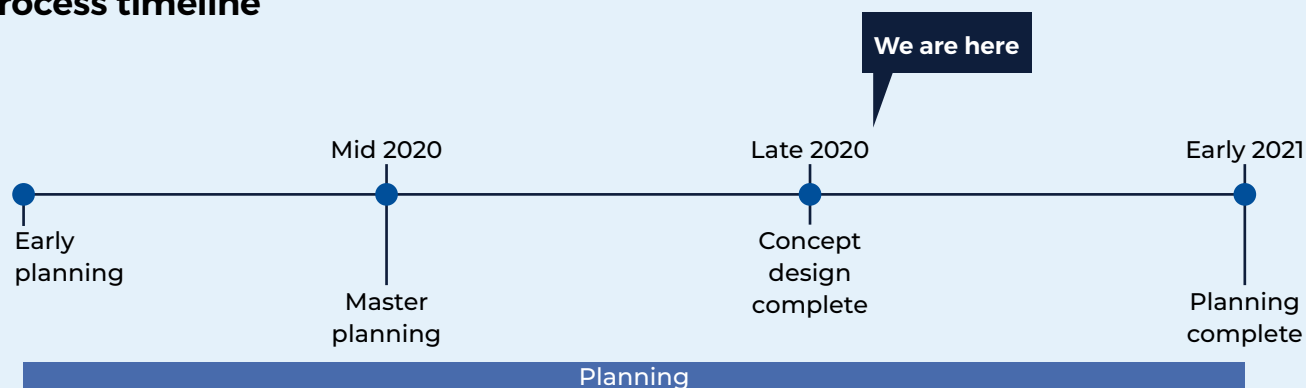


Mona Vale Public School upgrade

Planning update

September 2020

Process timeline



Planning for Mona Vale Public School

We are currently undertaking planning for upgrades to Mona Vale Public School. Planning for the upgrade project considers a number of factors including demographic trends, educational requirements, catchment boundaries, site sizes, due diligence studies, transport links, and partnership opportunities.

Progress summary

We are in the planning phase and have lodged the Business Case which seeks approval to proceed.

Once this approval is received, next steps will include working with consultants on a detailed concept design, and authority applications.

Construction will start once the construction contract has been awarded and authority approvals are given.

How can I get involved?

We are committed to working together with our school communities and other stakeholders to deliver the best possible learning facilities for students.

Your feedback on this project is important to us. For more information, questions or to make a comment please email us at schoolinfrastructure@det.nsw.edu.au.

Changing the way we communicate

The health and safety of our students, staff and community is our priority.

We are temporarily changing some of the ways we keep you informed about our project in your community to account for social distancing measures.

How we will keep you informed

Until further notice we will share information with our communities online instead of in person.

Our information hotline and email address will continue to operate as normal.

Keep in touch

The SINSW website will continue to have up-to-date information about the project in your area. You can also continue to contact us via our community information line and email on the details below.

For more information contact:

School Infrastructure NSW
Email: schoolinfrastructure@det.nsw.edu.au
Phone: 1300 482 651
www.schoolinfrastructure.nsw.gov.au

Mona Vale Public School upgrade

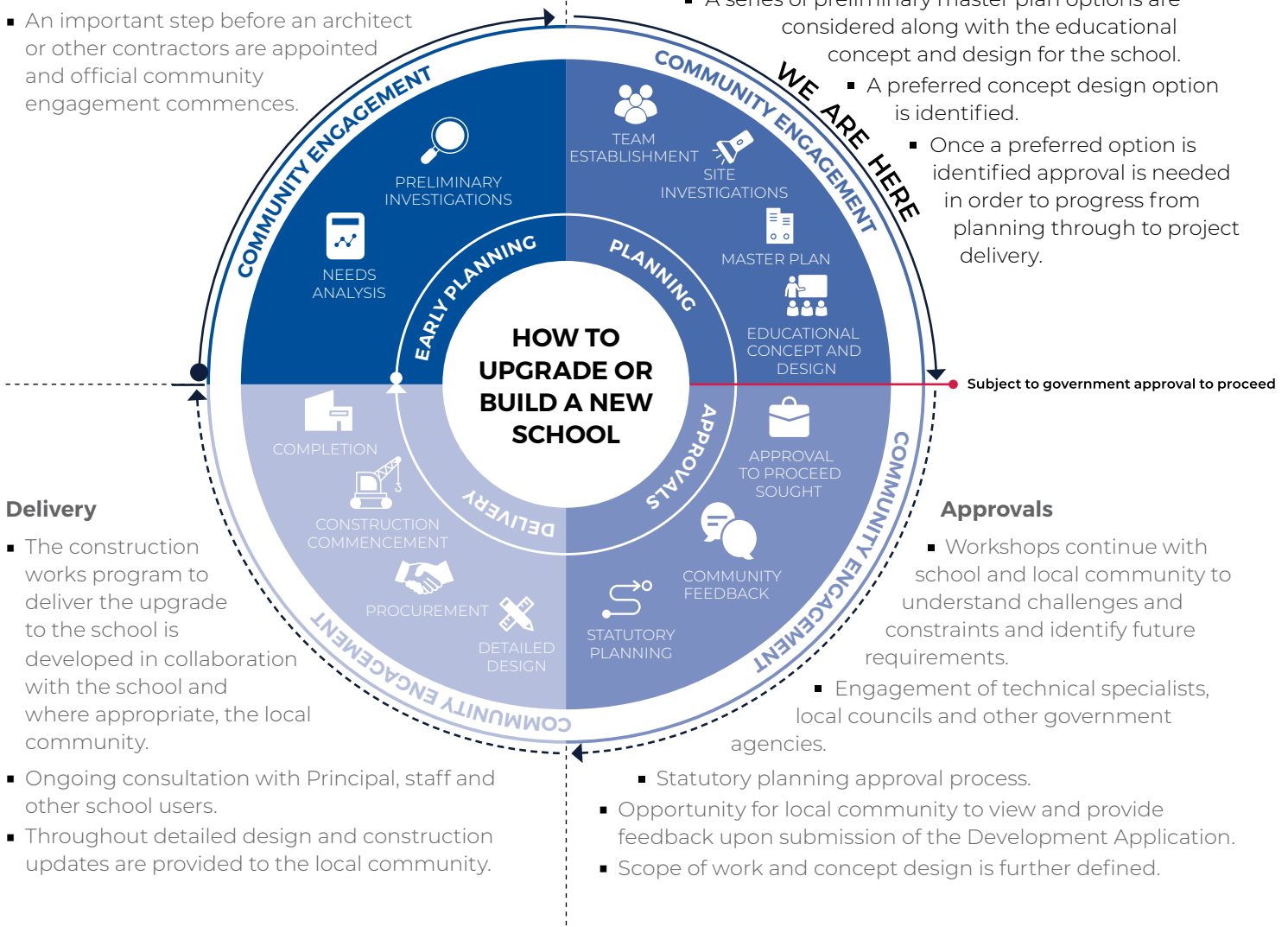
Planning funding has been allocated to allow for planning for upgrades to Mona Vale Public School. The information below takes you through the journey of how to upgrade, or build a new school.

Early planning

- Consideration and studies of demographic trends, education requirements, the condition of the existing school buildings, catchment boundaries, heritage requirements, transport links and partnership opportunities.
- Doing so means that we:
 - consider the needs of the local area now and into the future.
 - ensure the right school is designed for the community.
- An important step before an architect or other contractors are appointed and official community engagement commences.

Planning

- Consultants such as architects and project managers are appointed.
- Investigation and review of site and development of master plan options.
- Master planning considers options for the general size, shape and form of buildings for a specific school site.
- A Project Reference Group (PRG) is established.
- Operational, educational and service delivery factors are understood and considered by the PRG.
 - A series of preliminary master plan options are considered along with the educational concept and design for the school.
 - A preferred concept design option is identified.
 - Once a preferred option is identified approval is needed in order to progress from planning through to project delivery.



Delivery

- The construction works program to deliver the upgrade to the school is developed in collaboration with the school and where appropriate, the local community.
- Ongoing consultation with Principal, staff and other school users.
- Throughout detailed design and construction updates are provided to the local community.

Approvals

- Workshops continue with school and local community to understand challenges and constraints and identify future requirements.
 - Engagement of technical specialists, local councils and other government agencies.
 - Statutory planning approval process.
- Opportunity for local community to view and provide feedback upon submission of the Development Application.
- Scope of work and concept design is further defined.