

Investing in our schools

The NSW Government is investing \$7 billion over the next four years, continuing its program to deliver more than 200 new and upgraded schools to support communities across NSW. This is the largest investment in public education infrastructure in the history of NSW.

The NSW Department of Education is committed to delivering new and upgraded schools for communities across NSW. The delivery of these important projects is essential to the future learning needs of our students and supports growth in the local economy.

Benefits

- a new two-storey learning hub including:
 - 10 new flexible learning spaces (classrooms)
 - a new library
 - maker spaces
- existing buildings upgraded to provide a new administration area and new staff rooms
- heritage Block B to be internally renovated
- new covered outdoor areas and walkways



Artist impression – proposed new learning hub from the North

Millthorpe Public School upgrade

For more information phone: 1300 482 651
Email: schoolinfrastructure@det.nsw.edu.au

Proposed site plan

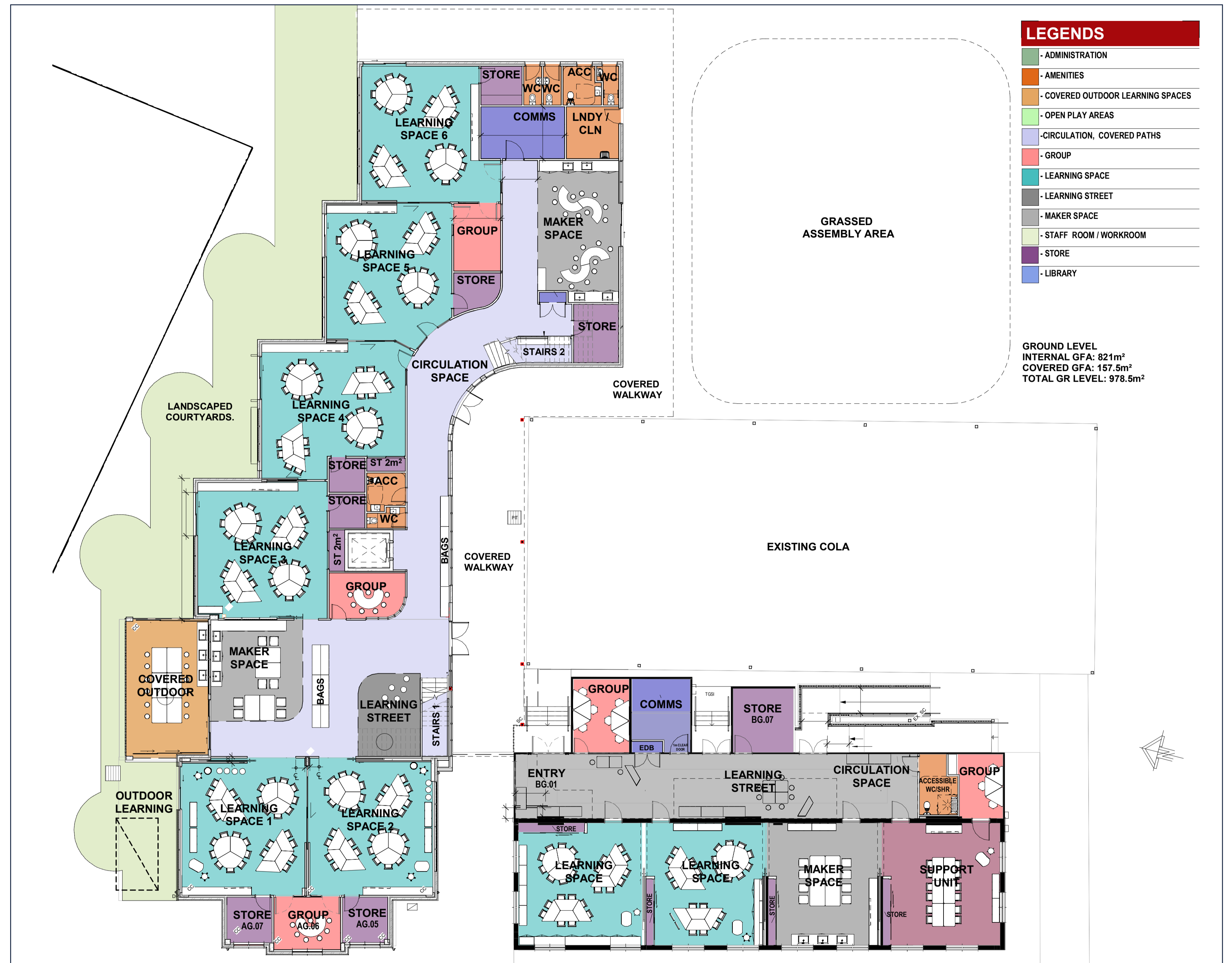


Millthorpe Public School upgrade

For more information phone: 1300 482 651
Email: schoolinfrastructure@det.nsw.edu.au

Millthorpe Public School upgrade

– Indicative internal layouts
Ground floor

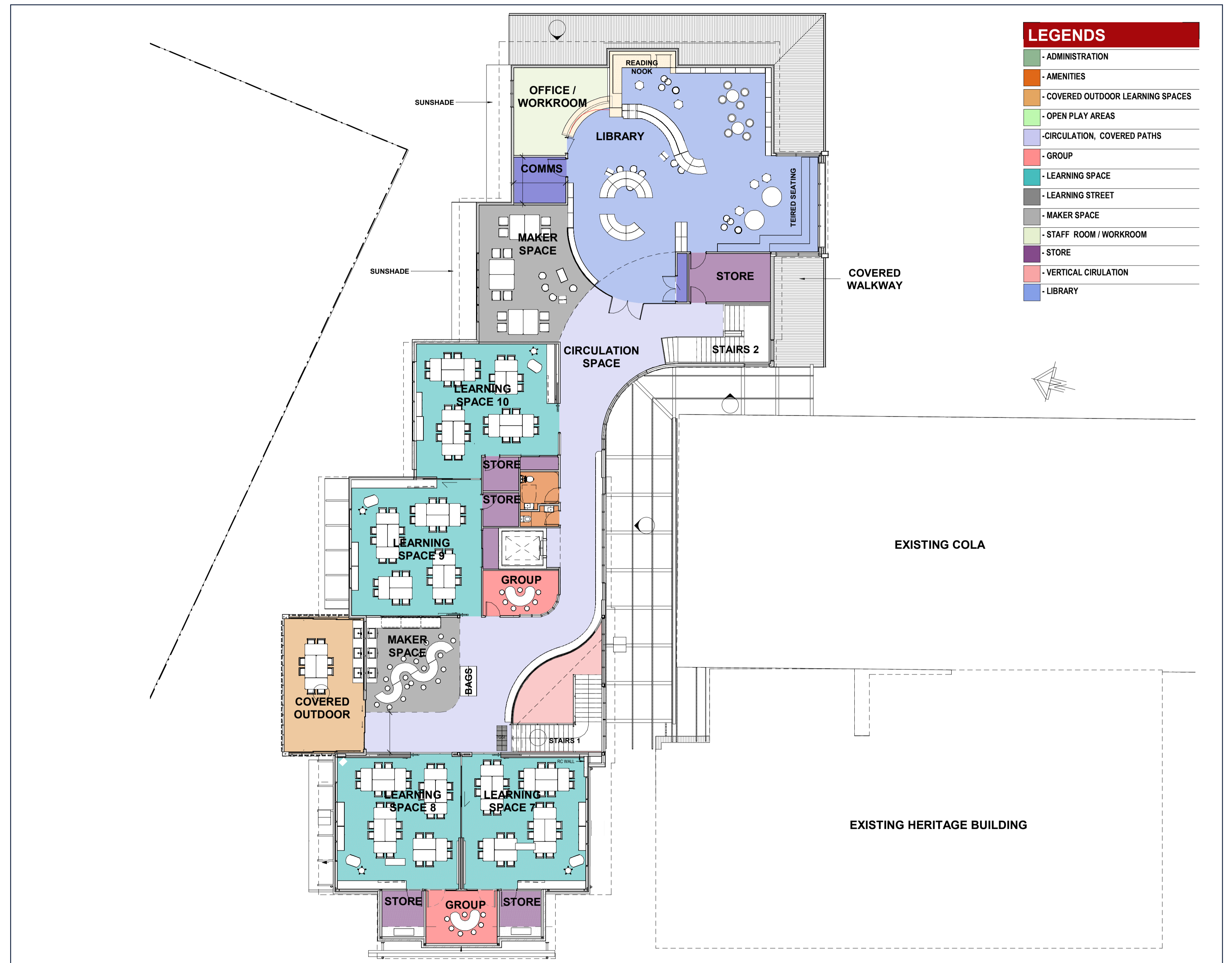


Millthorpe Public School upgrade

For more information phone: 1300 482 651
Email: schoolinfrastructure@det.nsw.edu.au

Millthorpe Public School upgrade

– Indicative internal layouts
Level 1



Millthorpe Public School upgrade

For more information phone: 1300 482 651
Email: schoolinfrastructure@det.nsw.edu.au

Innovative learning environments

Innovative learning environments offer flexibility where teachers can provide opportunities for student engagement. The learning spaces:

- are adaptable to accommodate small or large groups
- include learning centres with flexible spaces that allow students to use technology in a variety of settings
- provide opportunities to enhance skills in collaboration, communication, critical thinking, problem solving and creativity.



Artist impression – proposed new learning hub maker space



Artist impression – proposed new library

Millthorpe Public School upgrade

For more information phone: 1300 482 651
Email: schoolinfrastructure@det.nsw.edu.au

Planning approvals

The project will lodge a Development Application (DA) with Blayney Shire Council.

Some of the technical reports undertaken to date include:

- BCA Compliance Report
- Access Assessment
- Geotechnical Investigation Report
- Hazardous Material Audit
- Site Contamination Assessment
- Detail Survey
- Services, Structural & Civil Inspection Report
- Statement Of Heritage Impact (SOHI)
- Transport Advisory Technical Note
- Preliminary Arborist Report
- Draft Security Design
- Acoustic Report
- Safety In Design Report



Artist impression – heritage building and new learning hub from Park Street



Millthorpe Public School upgrade

For more information phone: 1300 482 651
Email: schoolinfrastructure@det.nsw.edu.au