

Millthorpe Public School

Information pack | March 2021



Artist impression of the Millthorpe Public School upgrade - new learning hub from the North

The NSW Government is investing \$7 billion over the next four years, continuing its program to deliver more than 200 new and upgraded schools to support communities across NSW. This is the largest investment in public education infrastructure in the history of NSW.

The NSW Department of Education is committed to delivering new and upgraded schools for communities across NSW. The delivery of these important projects is essential to the future learning needs of our students and supports growth in the local economy.



A new two-storey learning hub with **10** new classrooms



A new library



Heritage building to be internally renovated



A new administration area and new staff rooms



Maker spaces



Amenities and storage

Project overview

A project is underway to upgrade Millthorpe Public School to bring students the latest educational facilities and support the local community. Subject to development consent, the project will deliver:

- a new two-storey learning hub including:
 - 10 new flexible learning spaces (classrooms)
 - a new library
 - maker spaces
- existing buildings upgraded to provide a new administration area and new staff rooms
- heritage Block B to be internally renovated
- new covered outdoor areas and walkways.

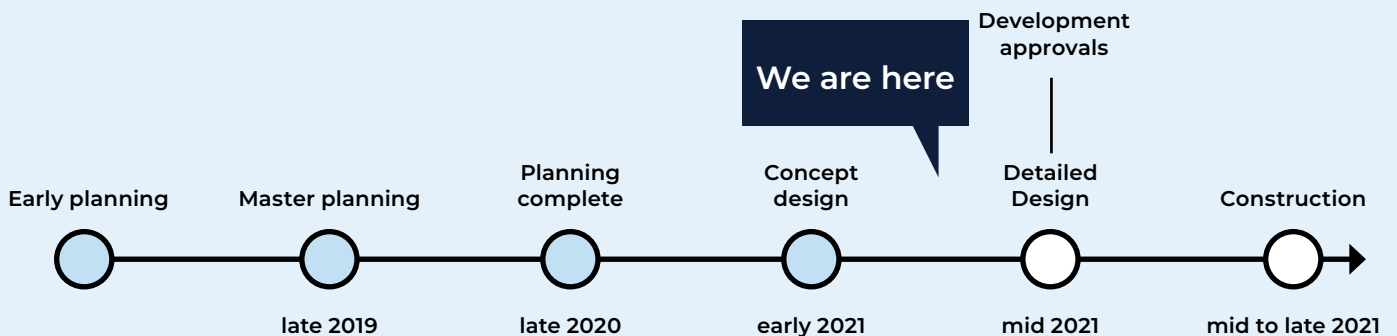
Progress summary

Our architects and planners have finalised a concept design in consultation with the school, the Department of Education, and P&C representatives.

Next steps

- Award Early Contractor Involvement (ECI) contract to finalise the detailed design
- A Development Application (DA) will be lodged with Blayney Shire Council
- Developing the detailed design
- Preparing for the start of construction.

Redevelopment project timeline



Frequently asked questions

What consultation has been undertaken for the Millthorpe Public School upgrade?

The concept design for the school upgrade was developed by a Project Reference Group (PRG) of architects, planners and design professionals in collaboration with Department of Education, Millthorpe Public School, and P&C leadership representatives. Consultation with a number of external bodies, including Blayney Shire Council and relevant utility providers among others, was undertaken throughout the design process. Priorities from these key stakeholders has informed the development of the design.

How will the Millthorpe Public School's heritage be respected?

The school is an important part of Millthorpe's history and its original features and character will be maintained as part of the project. The design of the new building will be sympathetic to the existing buildings and all heritage features will be retained.

Were ecologically sustainable development (ESD) principles considered in the design?

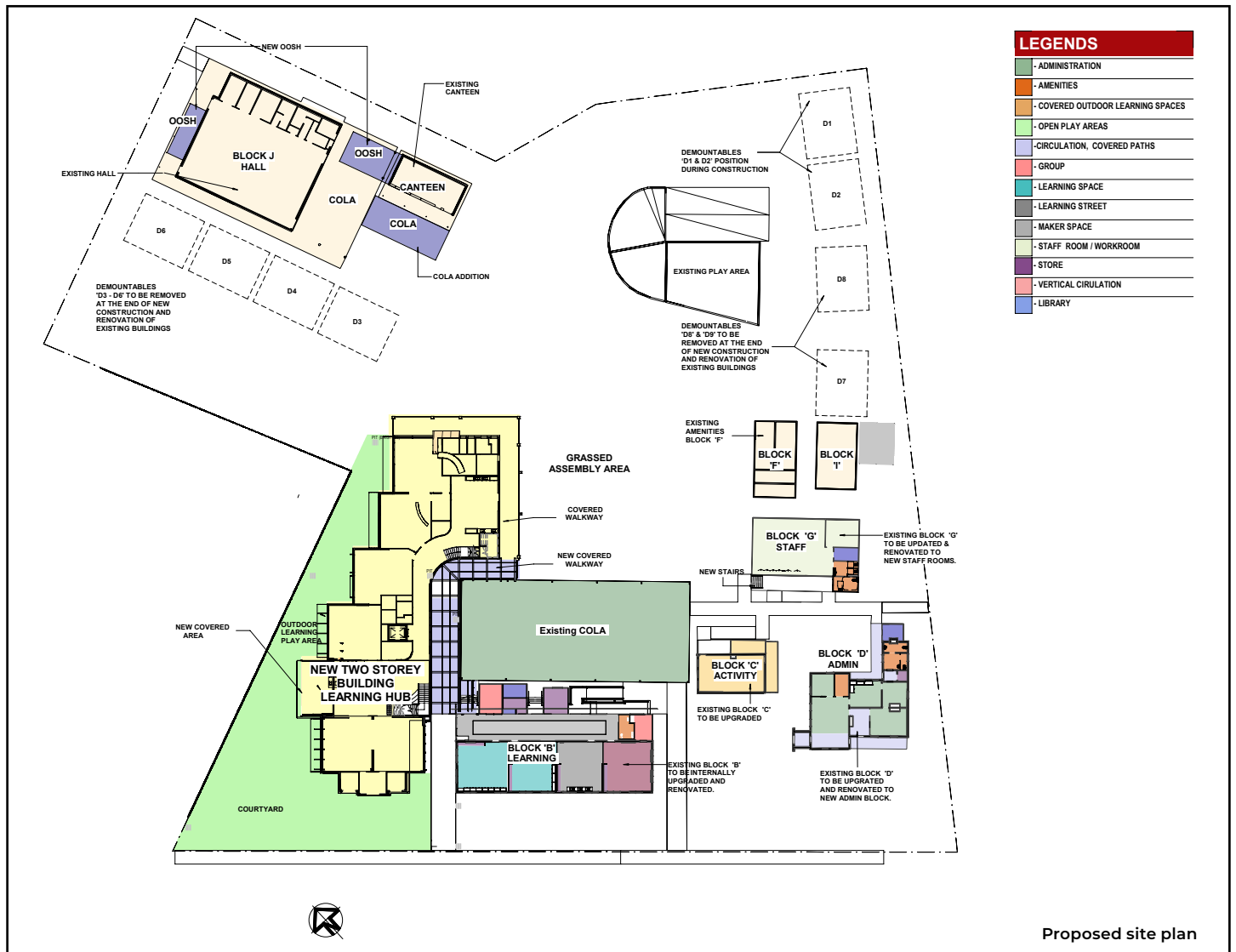
The project will include solar panels to the maximum extent permitted by NSW Government guidelines, as well as a rainwater tank below ground which will enable garden irrigation during dry periods. The existing large trees near the north boundary will also be retained based on advice from an arborist.

Will the existing demountable classrooms be removed at the end of the project?

The Millthorpe Public School upgrade will increase the number of permanent learning spaces available at the school and refurbish existing learning spaces to support modern collaborative teaching pedagogy.

The introduction of a designated intake area for Millthorpe Public School in 2019 is also expected to reduce enrolment demand over time.

All existing demountable classrooms are planned to be removed at the end of the project.





Artist impression – Level 1 library



Artist impression - Level 1 maker space

How can I get involved?

We are committed to working together with our school communities and other stakeholders to deliver the best possible learning facilities for students. Your feedback on this project is important to us. For more information, questions or to make a comment please email us at schoolinfrastructure@det.nsw.edu.au or phone 1300 482 651.

Stay informed



Website

Stay up to date by visiting the School Infrastructure NSW website schoolinfrastructure.nsw.gov.au



Email

Contact the Community Engagement team by emailing schoolinfrastructure@det.nsw.edu.au



Phone

Contact us between 9:00am and 5:00pm, Monday to Friday on **1300 482 651**