

Millthorpe Public School

Summer works notification

15 December 2020

A project is underway to upgrade Millthorpe Public School to bring students the latest educational facilities and support the local community. A preferred design to meet Millthorpe Public School's educational and operational requirements is being finalised and will be shared with the community in early 2021.

Relocation of demountables

In preparation for the start of construction in 2021 the school's demountable classrooms will be relocated to another part of the site in the upcoming 20/21 summer holidays (refer to map overleaf).

The work will include:

- Installing piers and footings
- Crane lifting the demountables to their new location
- Connecting services and installing furniture
- Reinstating work areas and removal of temporary fencing.

Work hours will be 7:00am to 5:00pm, Monday to Saturday. There will be no work on Public Holidays and Sundays without prior notification.

Traffic control and security measures will be in place where required for the safety of the community.

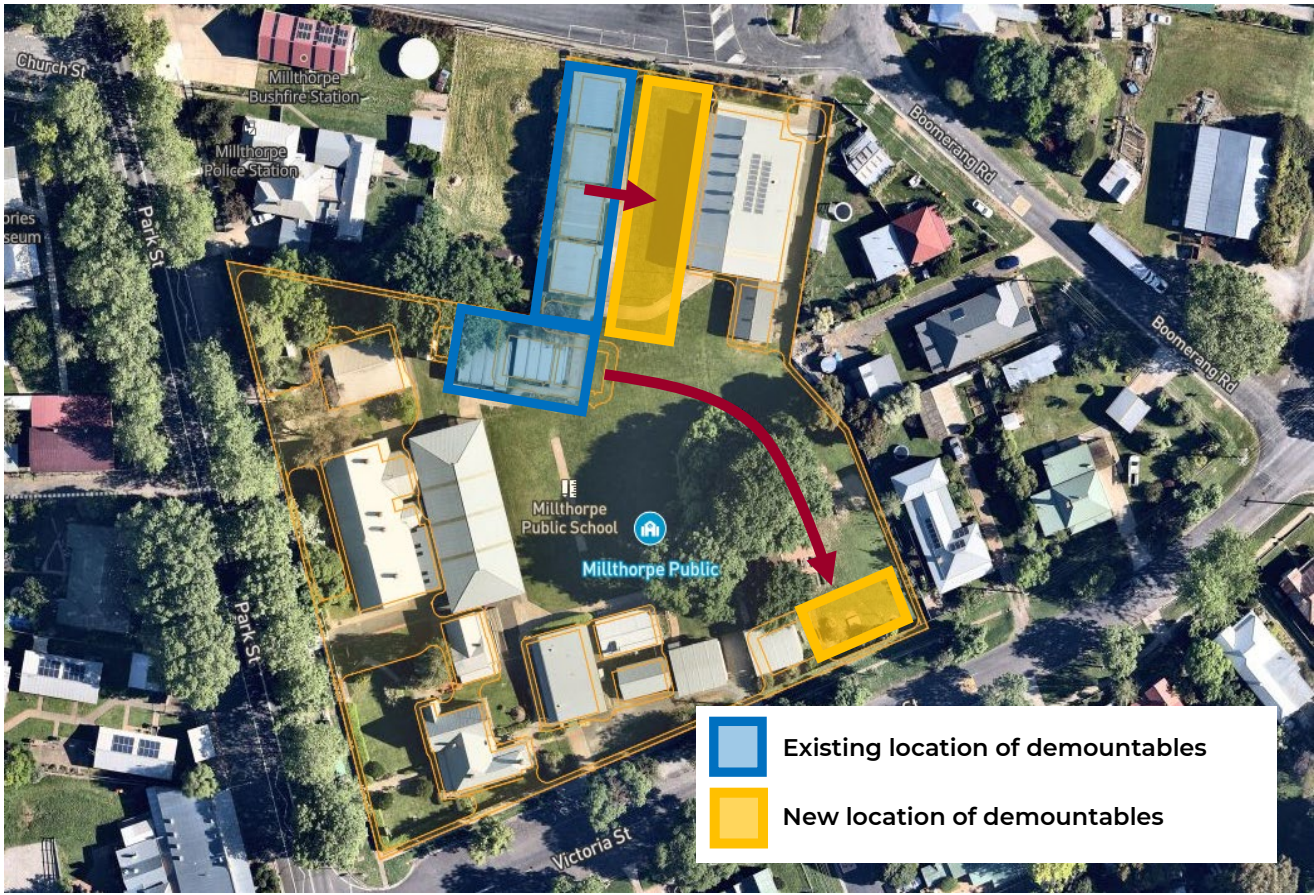
We are here to make sure that work is completed safely and efficiently and ensure that disruptions to the community are minimised.

For more information contact:

School Infrastructure NSW
Email: schoolinfrastructure@det.nsw.edu.au
Phone: 1300 482 651
www.schoolinfrastructure.nsw.gov.au



Indicative site map



For more information contact:

School Infrastructure NSW
Email: schoolinfrastructure@det.nsw.edu.au
Phone: 1300 482 651
www.schoolinfrastructure.nsw.gov.au

