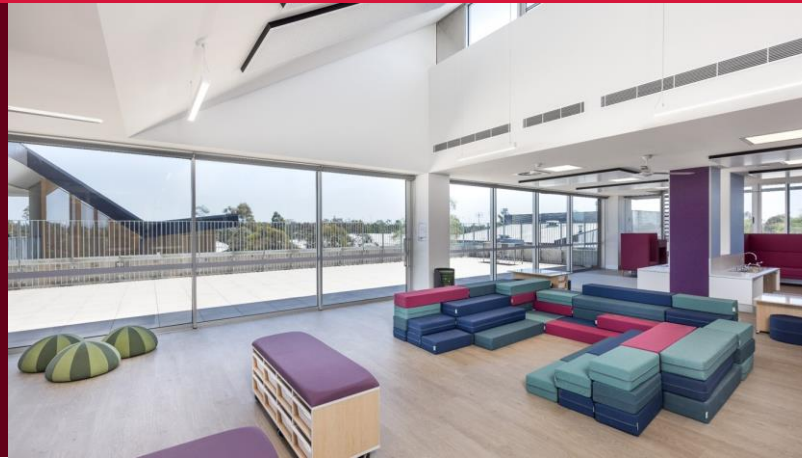


Midtown Macquarie Park new primary school

Project update | August 2024



Investing in our schools

As part of the NSW Government's plan to rebuild public education, the 2024-25 Budget is delivering record education funding, including \$8.9 billion for new and upgraded schools. This targeted investment will ensure growing communities get access to a world class public education.

Project overview

A project is underway for a new primary school in Midtown Macquarie Park to meet anticipated enrolment growth in the area. Midtown is a new urban neighbourhood being built in Macquarie Park that will include social, affordable and private housing, community facilities, retail, and green space.

The school will accommodate 750 students from Kindergarten to Year 6 and provide modern classrooms, administration and staff facilities, a canteen, a multipurpose hall, a library, and covered and landscaped outdoor learning areas. This project is part of a broader strategy to cater for predicted enrolment growth in the Ryde area. Other school infrastructure projects in the area include the Macquarie Park Education Campus and an upgrade to Ryde Secondary College.

Progress update

The project is a State Significant Development (SSD- 56124984) and the NSW Department of Planning, Housing and Infrastructure (DPHI) is currently assessing the application for this project.

We are pleased to announce that Taylor Construction Group has been awarded the construction contract for the new school.

Next steps

Taylor Construction Group will work closely with the project team to finalise the design and develop a detailed works program. Once DPHI has approved the SSD application, we will start construction on the new school. Further information will be provided before construction starts.



Email: schoolinfrastructure@det.nsw.edu.au
Phone: 1300 482 651
schoolinfrastructure.nsw.gov.au

More information

You can find more information about the project at edu.nsw.link/MacquarieParkNPS or by scanning the QR code.



If you have any questions about this project, you can contact School Infrastructure NSW during business hours on the contact details below.