






# Project overview

A project is underway to deliver a new primary school as part of the Midtown Macquarie Park development to meet anticipated enrolment growth in the area. The new primary school will accommodate 750 students from kindergarten to year 6 and will provide:

- |   |  |
|---|--|
|  flexible learning spaces             |  a canteen                               |
|  a multipurpose hall                 |  a library                              |
|  administration and staff facilities |  covered outdoor learning areas (COLAs) |



Artist impression of the new primary school Midtown Macquarie Park (indicative only and subject to change)

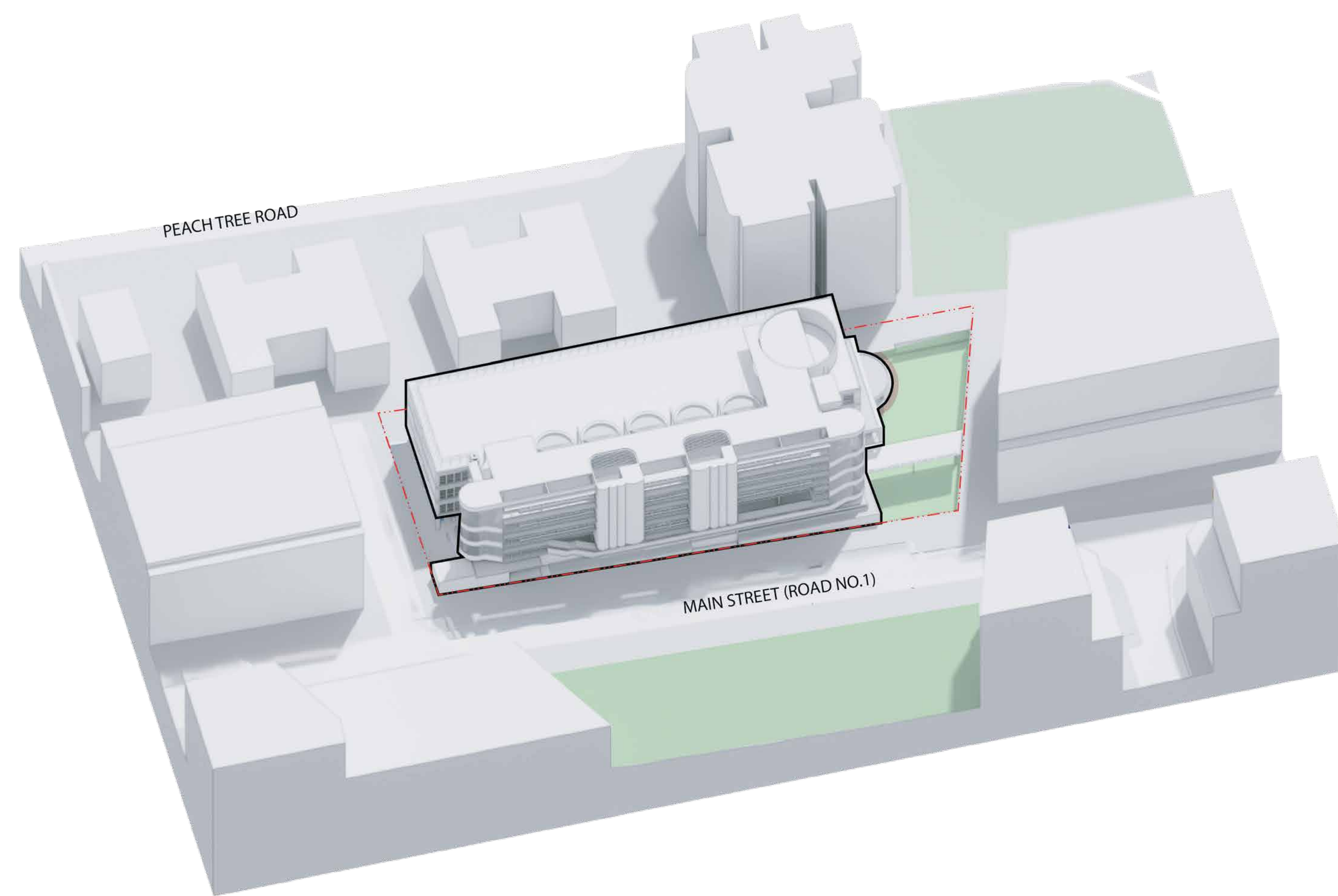
## Midtown Macquarie Park new primary school

For more information phone: 1300 482 651  
Email: [schoolinfrastructure@det.nsw.edu.au](mailto:schoolinfrastructure@det.nsw.edu.au)  
[schoolinfrastructure.nsw.gov.au](http://schoolinfrastructure.nsw.gov.au)



# Location

The new urban primary school will be located in Midtown, Macquarie Park. Midtown is a new urban neighbourhood being built on the site of the former Ivanhoe Estate that will include social, affordable and private housing, community facilities, retail, and green space.



Concept design showing the new primary school in Midtown (indicative only and subject to change)

The site for the new school is well connected to public transport. It is also close to public parkland and sports fields with Wilga Park, Shrimptons Creek and ELS Hall Park a short walk away.



Map showing the location for the new school

## Midtown Macquarie Park new primary school

For more information phone: 1300 482 651  
Email: [schoolinfrastructure@det.nsw.edu.au](mailto:schoolinfrastructure@det.nsw.edu.au)  
[schoolinfrastructure.nsw.gov.au](http://schoolinfrastructure.nsw.gov.au)



# Designing an urban school

The new primary school is being designed in line with the Department of Education's Educational Facilities Standards and Guidelines, and guidelines for designing urban schools. The design is targeting Green Star certification for sustainability.

The school design is for a six-storey building with standardised learning hubs, flexible spaces and facilities that offer opportunities for shared use with the community.

The design maximises play and outdoor space by including play space on each level.

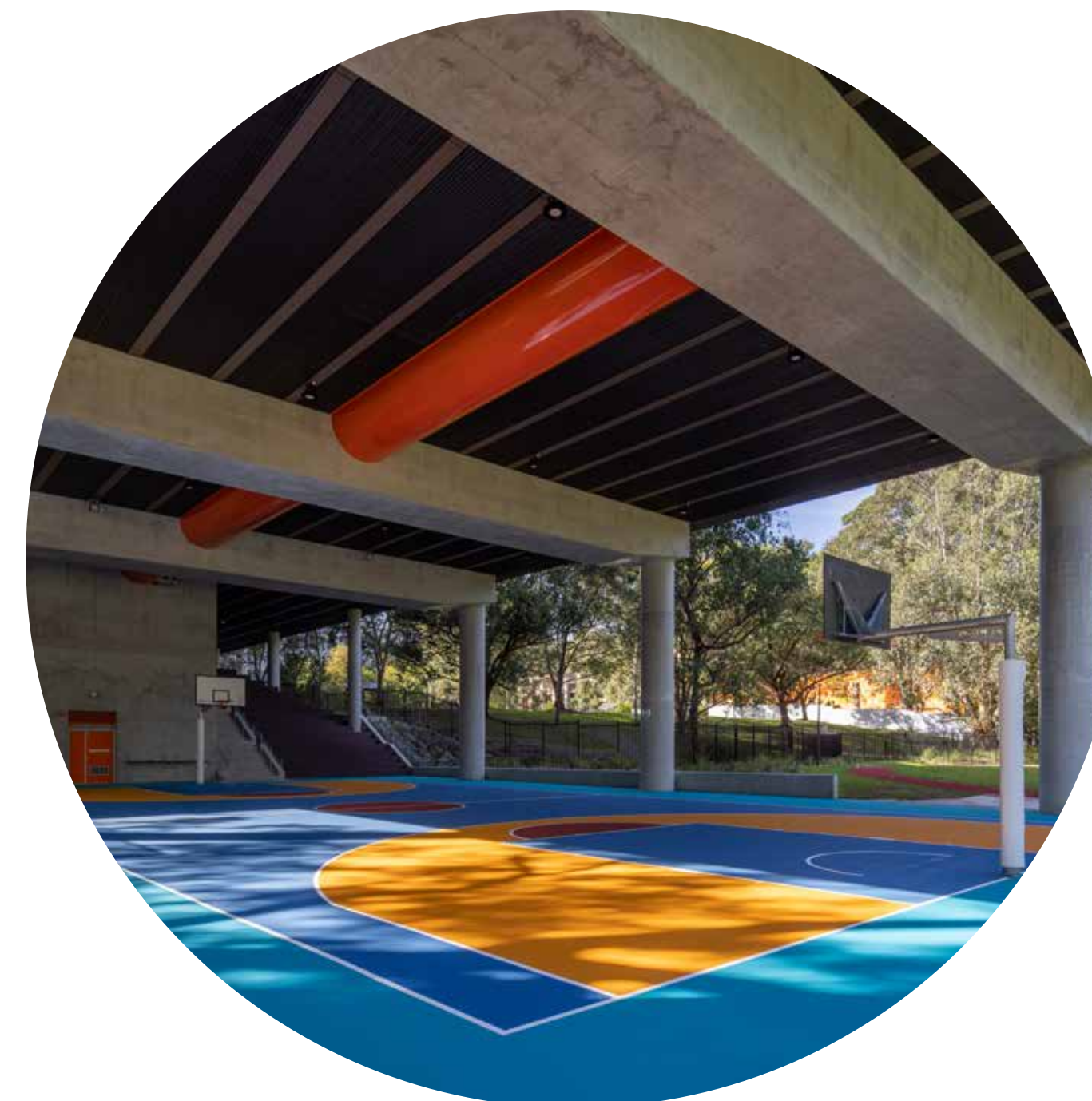
## Examples of spaces from new or recently upgraded schools



A multipurpose hall for sports and performance



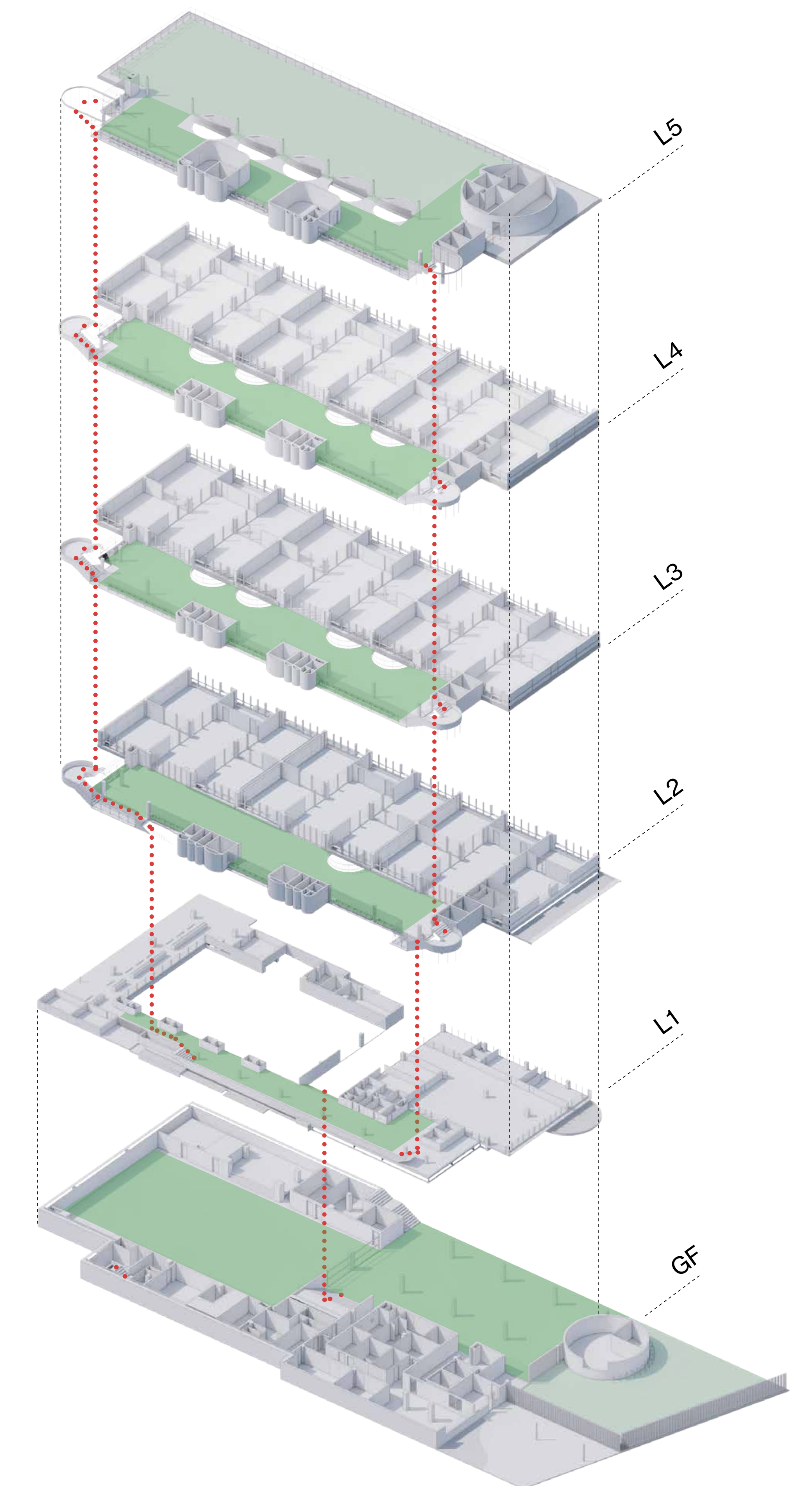
A primary school library



A covered outdoor learning area (COLA)



A netted rooftop play area



The design for play space and outdoor space (indicative only and subject to change)

The actual design for the new primary school will differ from the images above

## Midtown Macquarie Park new primary school

For more information phone: 1300 482 651  
Email: [schoolinfrastructure@det.nsw.edu.au](mailto:schoolinfrastructure@det.nsw.edu.au)  
[schoolinfrastructure.nsw.gov.au](http://schoolinfrastructure.nsw.gov.au)



# What's next?

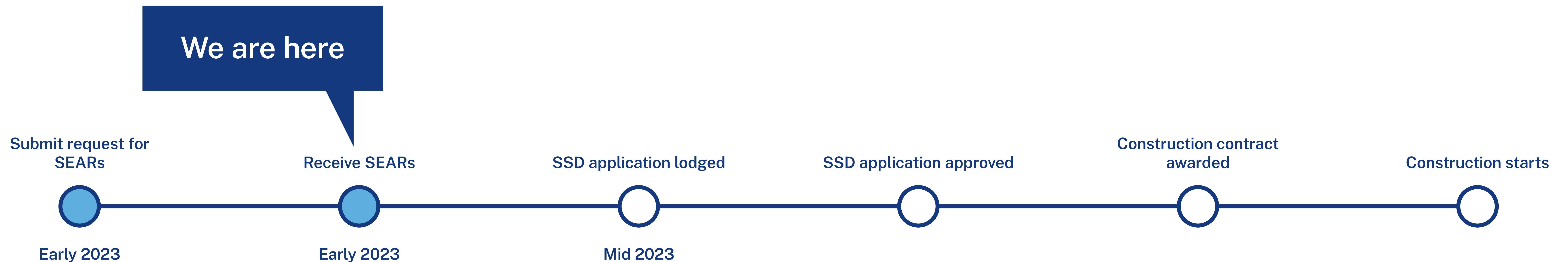
The project to build the new school is a State Significant Development (SSD) and so the NSW Department of Planning and Environment (DPE) will assess our development application.

DPE has provided the Secretary's Environmental Assessment Requirements (SEARs) for the project. This tells us the technical studies we need to include in the Environmental Impact Statement (EIS) that forms part of the SSD application.

Technical studies consider aspects such as traffic, noise, operations, biodiversity, sustainability and plans for construction management.

We are now working on the EIS for the SSD application. The EIS will be available to view when the SSD application is placed on public exhibition later this year. We will inform the community when we have lodged the application, and will let you know how you can have your say.

## Project timeline



The indicative timeline above shows the steps that need to be taken before we can start to build the new school.

## Midtown Macquarie Park new primary school

For more information phone: 1300 482 651  
Email: [schoolinfrastructure@det.nsw.edu.au](mailto:schoolinfrastructure@det.nsw.edu.au)  
[schoolinfrastructure.nsw.gov.au](http://schoolinfrastructure.nsw.gov.au)



# Flexible learning spaces

Contemporary learning and teaching prepares students for a diverse and interconnected world. We are evolving the ways we teach our students new skills valued by a changing workforce, understand different ways students learn and support new ways of interacting with information through technology.

Flexible learning spaces are designed and equipped to support contemporary learning and teaching.

## What makes a flexible learning space?



### Learning space

- Different zones (areas of a building or floors) are designed to support a range of activities sometimes grouped by subject area
- Varied furniture allows for student choice, comfort and flexibility
- Spaces are flexibly connected allowing students to work in varied group sizes
- Connection between indoor and outdoor learning spaces



### Organisation

- Movement is encouraged for students and teachers to collaborate and interact
- More than one teacher may be available to students within the learning environment
- Students learn in classes, small groups or individually



### Teaching and learning

- Learning is personalised
- Learning is connected across different subject areas
- There is a focus on creativity and innovation with students prototyping, testing and using technology in creative ways



### Technology

- Technology is integrated into spaces to extend learning opportunities
- WiFi is available everywhere including outdoors
- Specialist equipment is available for students to innovate, communicate and create

## Midtown Macquarie Park new primary school

For more information phone: 1300 482 651  
Email: [schoolinfrastructure@det.nsw.edu.au](mailto:schoolinfrastructure@det.nsw.edu.au)  
[schoolinfrastructure.nsw.gov.au](http://schoolinfrastructure.nsw.gov.au)



# How standardised learning hub layouts work in practice

STEP 1



STEP 2



STEP 3



STEP 4

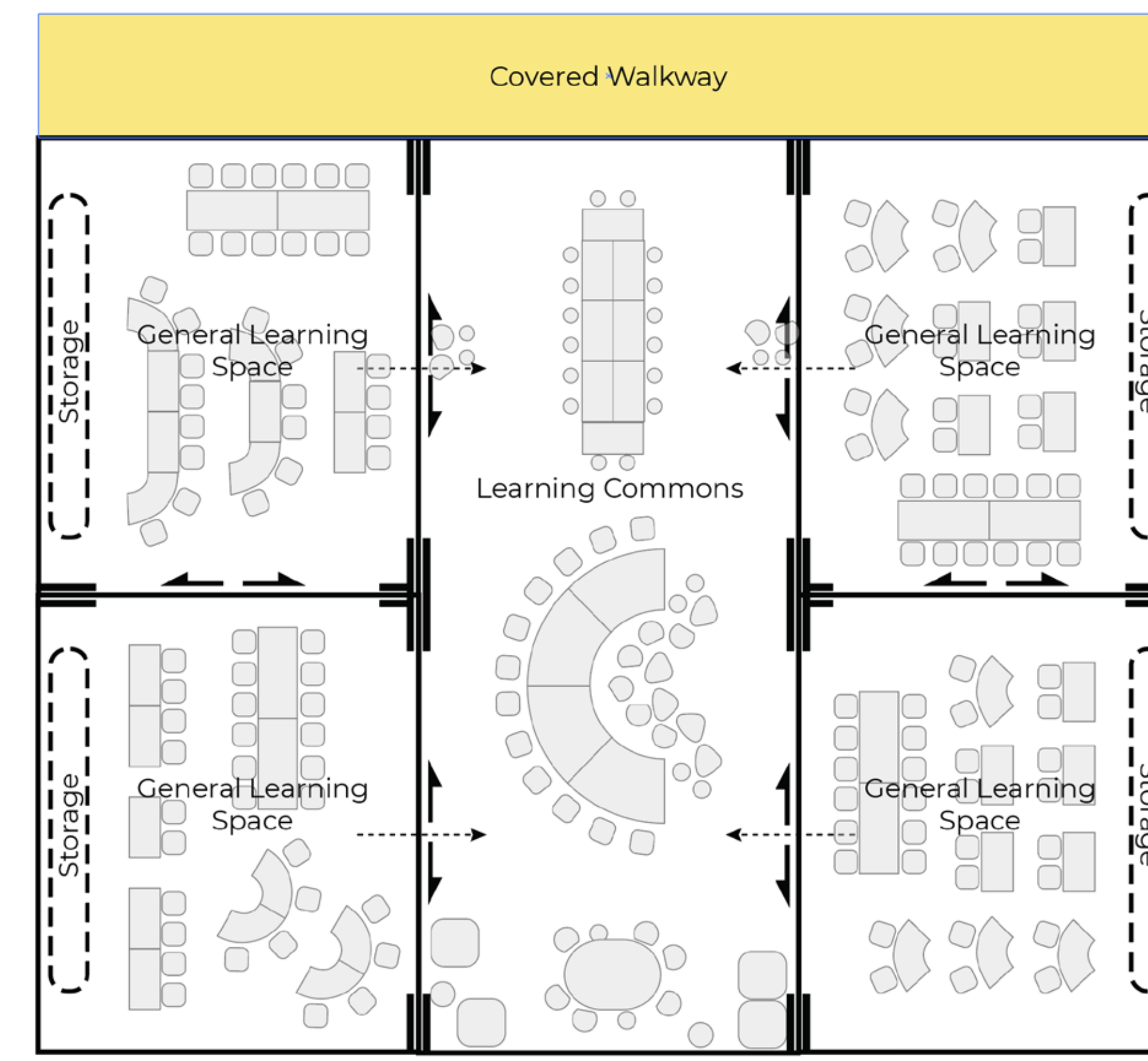
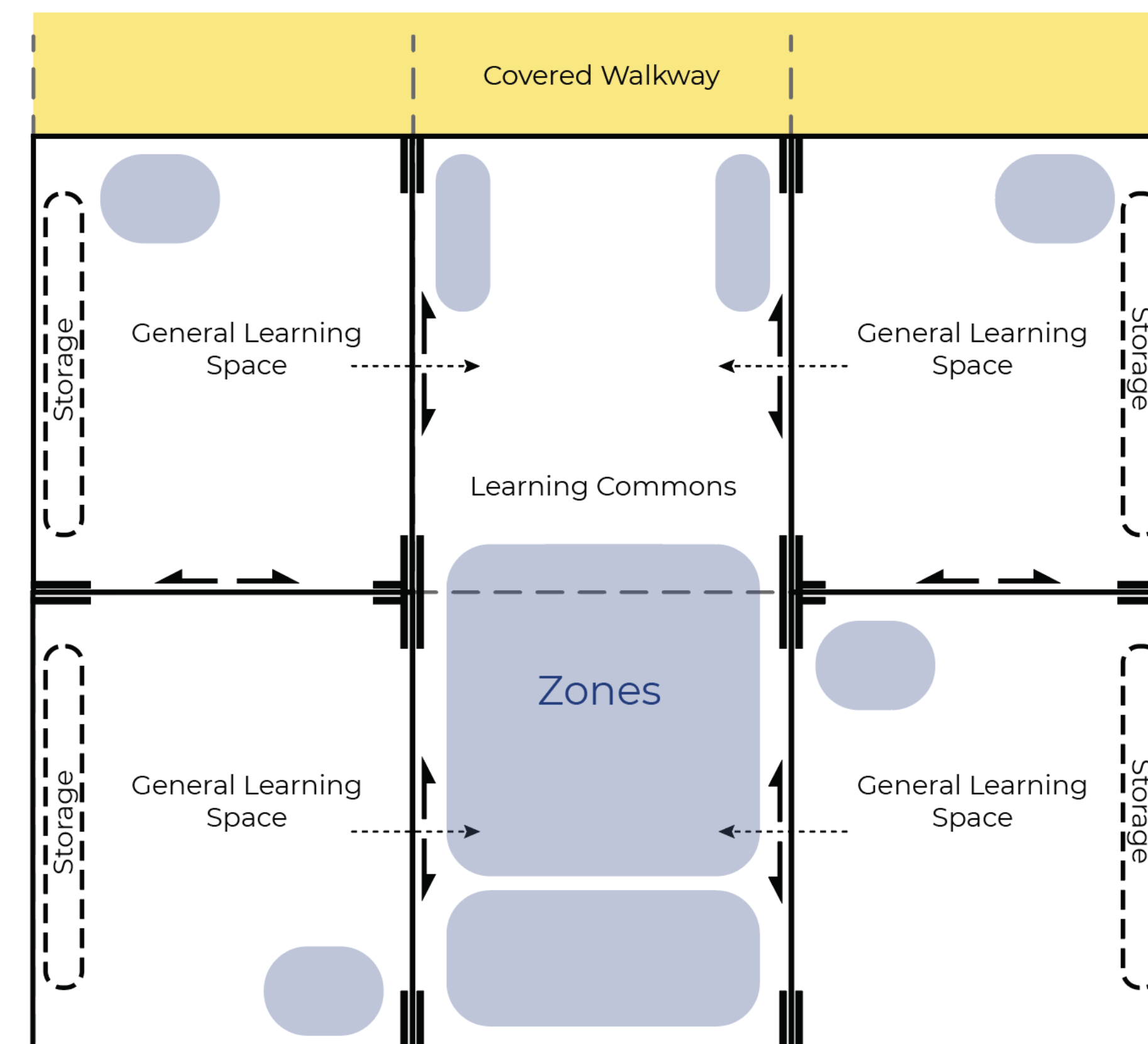
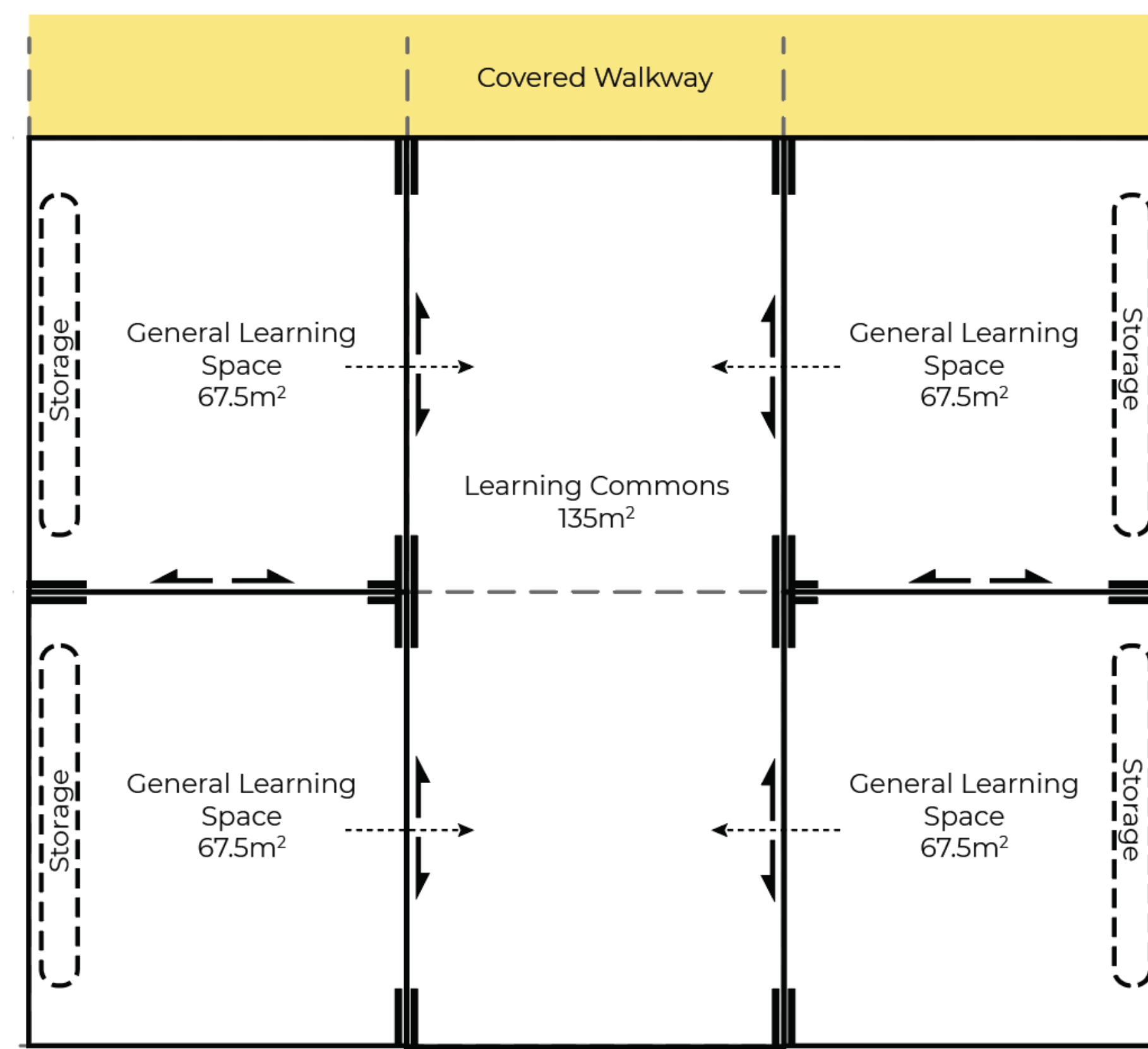


Standardised design for a school learning hub, featuring 4 learning spaces and a learning commons.

The design is modified to suit the school context outlined in the education rationale. Schools can include practical activity areas (PAAs), STEM spaces or other multi-purpose spaces (MPSs) that support collaboration, preparation or sensory needs.

Furniture settings are selected to align to local teaching and learning requirements. Furniture selection is supported by professional learning and other resources.

From a 2D plan to a flexible learning space, ready for students to engage in their learning activities.



## Midtown Macquarie Park new primary school

For more information phone: 1300 482 651  
Email: [schoolinfrastructure@det.nsw.edu.au](mailto:schoolinfrastructure@det.nsw.edu.au)  
[schoolinfrastructure.nsw.gov.au](http://schoolinfrastructure.nsw.gov.au)



# How we build and upgrade schools

In all our new schools or school upgrades when working on design, we must meet our Educational Facilities Standards and Guidelines (EFSG) for both indoor and outdoor education facilities. The guiding principles of the EFSG provide our vision for learning environments and are enriched by the needs and goals of the school and local community. These guidelines guarantee that all new schools and school upgrades align with the NSW Department of Education's vision and can deliver the Australian curriculum while allowing the school community to contribute ideas towards making the school their own.

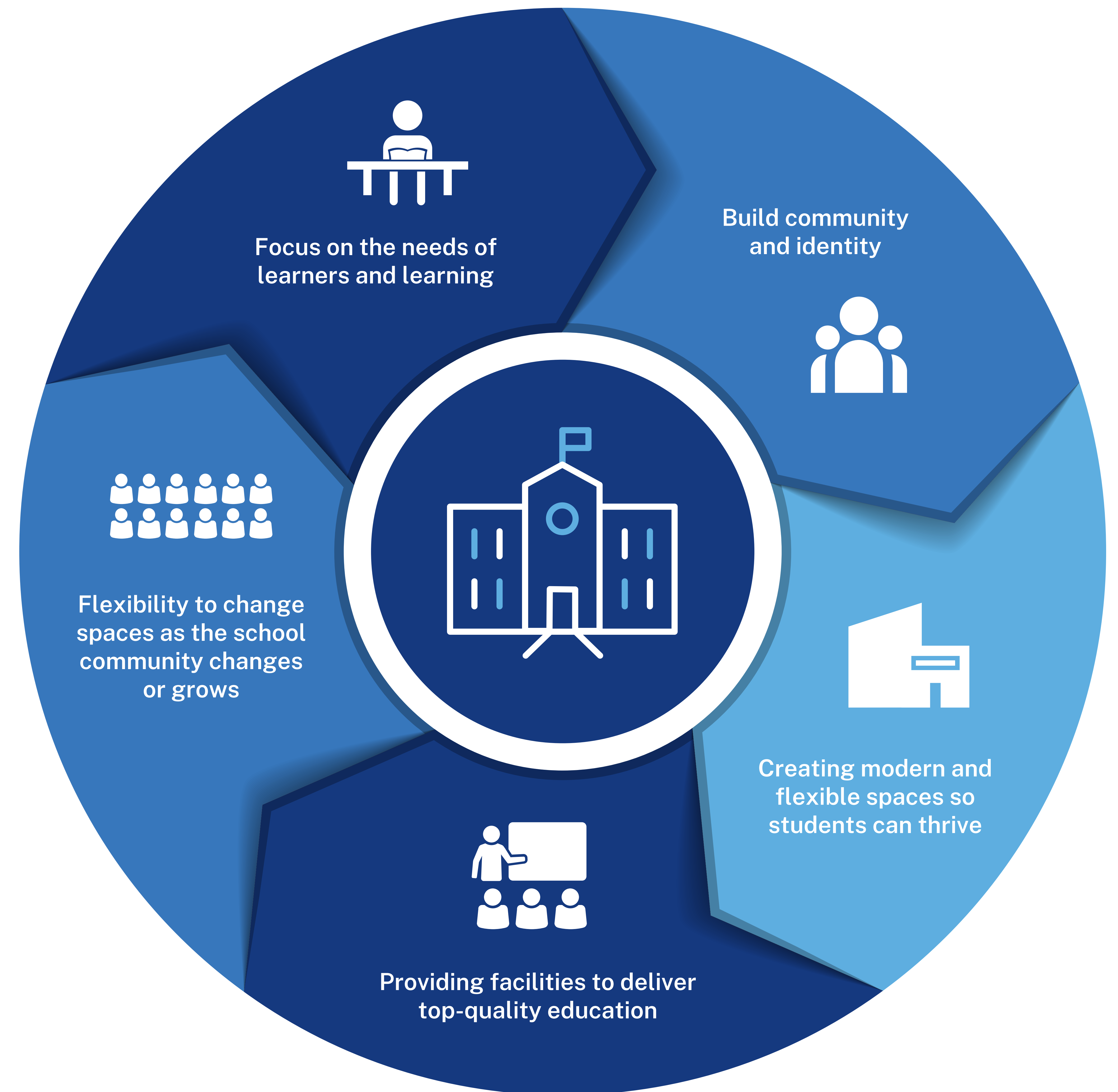
## Want to know more about how we build and upgrade schools?

We design and deliver schools to suit the individual needs of the local school community. We harness opportunities and solve challenges. As a result, no two schools are exactly the same.

What remains consistent is school infrastructure that empowers teachers to prepare students with the skills and capabilities they need to thrive in a rapidly changing and interconnected world.

Take a look at some of the upgrades we have delivered and see how these varied spaces support teaching and learning.

Visit [edu.nsw.link/SchoolShowcase](https://edu.nsw.link/SchoolShowcase) or scan the QR code.



## Midtown Macquarie Park new primary school

For more information phone: 1300 482 651  
Email: [schoolinfrastructure@det.nsw.edu.au](mailto:schoolinfrastructure@det.nsw.edu.au)  
[schoolinfrastructure.nsw.gov.au](https://schoolinfrastructure.nsw.gov.au)