

Melrose Park Public School redevelopment

Planning update | April 2024

Investing in our schools

As part of the NSW Government's plan to rebuild essential services, the 2023-24 Budget is delivering a record \$8.8 billion for new and upgraded schools. This targeted investment in growing communities will ensure working families get access to a world class public education.

Project overview

The redevelopment of Melrose Park Public School is in the design phase and will provide new and upgraded classrooms, core facilities and a new public preschool to meet anticipated enrolment growth in the area.

The upgrade will be delivered in stages; we will provide further details on what will be delivered in each stage once these are confirmed.

Progress summary

Concept designs are in progress. This is an important step in the planning and design process. As part of this process, we will also examine the best way for the primary school and the new high school to work together.

Next steps

- Finalise concept designs.
- Begin schematic design phase.
- Procurement planning and tender processes.
- Award construction contract.

Once the concept design phase has finished, we will hold an information session on site to provide the school and local community an opportunity to see the proposed site and designs and speak to the project team.

Keep in touch

We will continue to keep the community updated as the design phases progress. For more information, please scan the QR code to keep up to date with the project webpage or contact us using the details below.



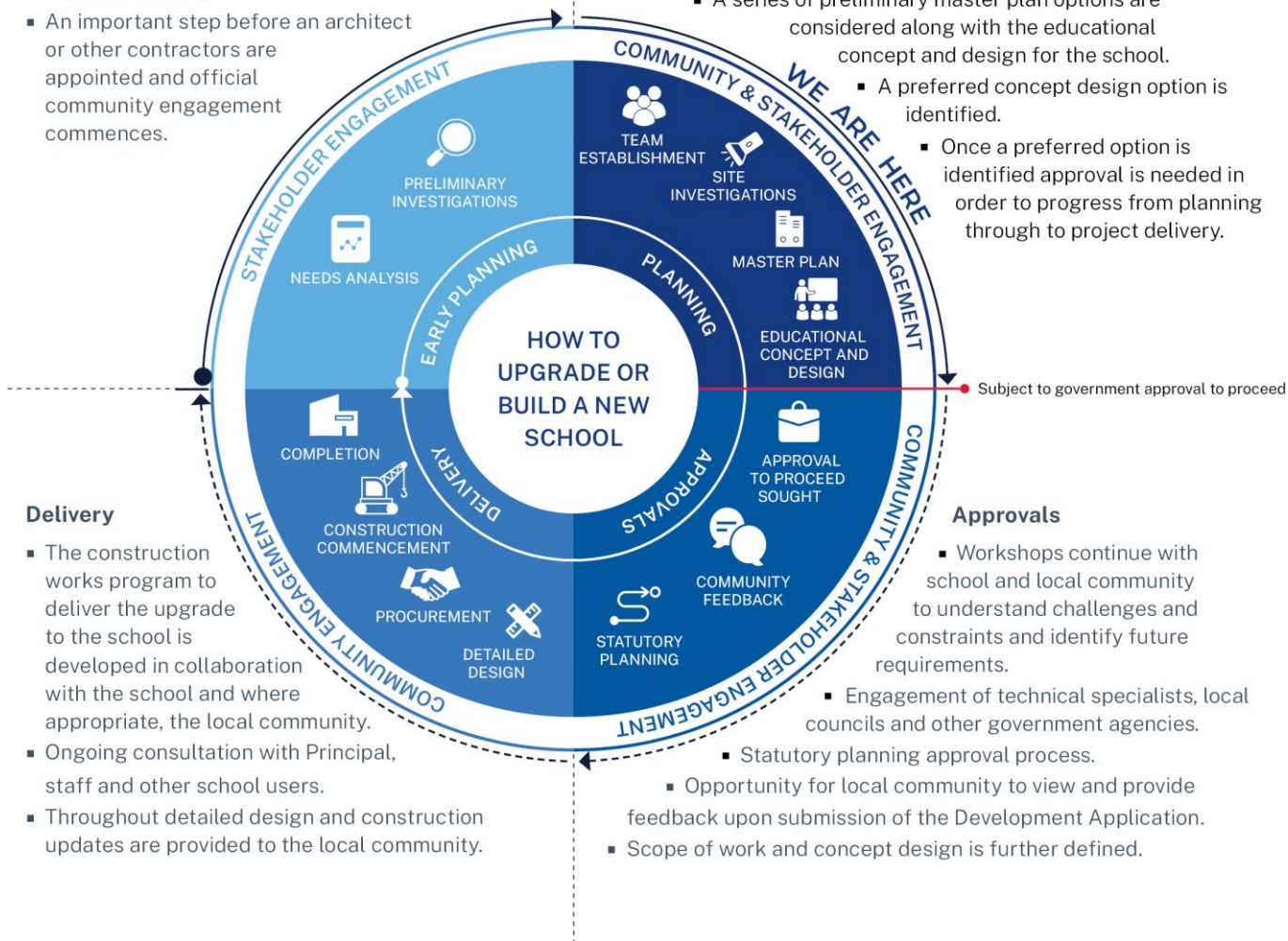
Melrose Park Public School redevelopment

Early planning

- Consideration and studies of demographic trends, education requirements, the condition of the existing school buildings, catchment boundaries, heritage requirements, transport links and partnership opportunities.
- Doing so means that we:
 - consider the needs of the local area now and into the future.
 - ensure the right school is designed for the community.
- An important step before an architect or other contractors are appointed and official community engagement commences.

Planning

- Consultants such as architects and project managers are appointed.
- Investigation and review of site and development of master plan options.
- Master planning considers options for the general size, shape and form of buildings for a specific school site.
- A Project Reference Group (PRG) is established.
- Operational, educational and service delivery factors are understood and considered by the PRG.
 - A series of preliminary master plan options are considered along with the educational concept and design for the school.
 - A preferred concept design option is identified.
 - Once a preferred option is identified approval is needed in order to progress from planning through to project delivery.



Delivery

- The construction works program to deliver the upgrade to the school is developed in collaboration with the school and where appropriate, the local community.
- Ongoing consultation with Principal, staff and other school users.
- Throughout detailed design and construction updates are provided to the local community.

Approvals

- Workshops continue with school and local community to understand challenges and constraints and identify future requirements.
 - Engagement of technical specialists, local councils and other government agencies.
- Statutory planning approval process.
 - Opportunity for local community to view and provide feedback upon submission of the Development Application.
- Scope of work and concept design is further defined.