

Marsden High School

Information pack | October 2021



Artist impression of the new schools

The NSW Government is investing \$7.9 billion over the next four years, continuing its program to deliver 215 new and upgraded schools to support communities across NSW. This is the largest investment in public education infrastructure in the history of NSW.

We are relocating Meadowbank Public School and Marsden High School to the Meadowbank Education and Employment Precinct. The Meadowbank Education and Employment Precinct will cater for 1,000 primary school students, 1,500 secondary school students and a further 120 Intensive English Centre students.

The new facilities for Marsden High School will deliver:



Flexible, multi-purpose learning spaces, as well as modern technical learning spaces



A dedicated high school library with senior learning space



A school hall / gymnasium with full-size indoor basketball court



Open green space for sporting and recreation activities



Expert facilities for targeted learning, wellbeing and cultural awareness programs



Ability for students to complete primary, secondary and vocational education and training at one campus

A new home for Marsden High School

In Term 2, 2022 Marsden High School is moving to new, purpose-built facilities located on Rhodes Street, Meadowbank

This is a historic moment for Marsden High School, providing new, purpose-built facilities and greater connections with training and employment opportunities for our students.

The new Marsden High School is located alongside Meadowbank Public School. The high school and primary school facilities will be fully separated and continue to operate as separate schools in their new location.

Side by side, the schools will form a connected education community, supporting students to achieve their potential throughout their school years.

The new school facilities will cater for 1,000 primary school students, 1,500 secondary school students and a further 120 Intensive English Centre students.

The new Meadowbank Education and Employment Precinct will have education at its heart while also connecting students to TAFE, local industry and the surrounding community.

Message from the Principal

The new Marsden High School facilities will cater for the education of young people in a modern and multi-purpose learning environment.

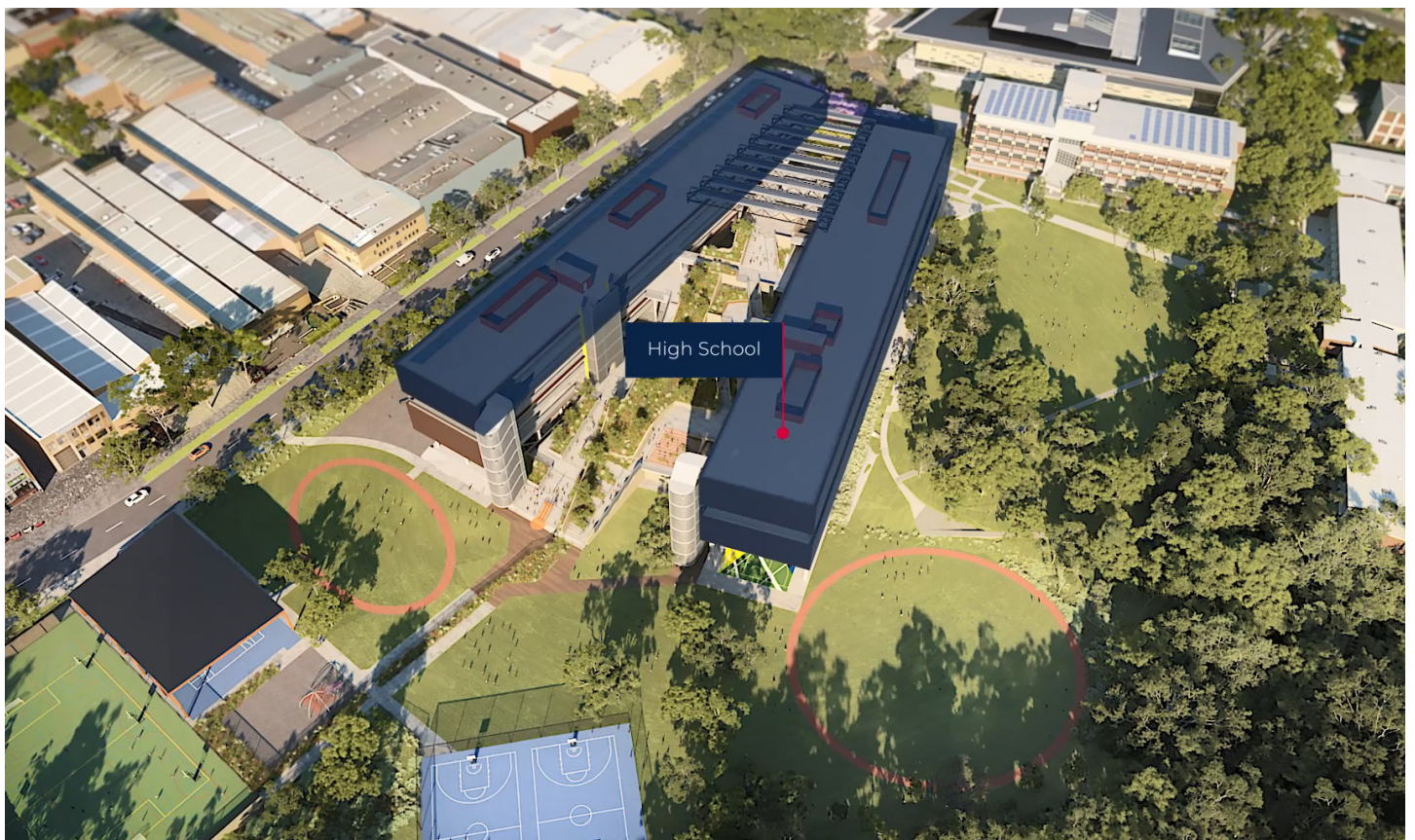
We pride ourselves on being a caring school who looks after the wellbeing of our students in their social academic and individual development. Our extensive welfare and wellbeing programs ensure that students are known, valued and cared for, and that strategies are put in place to address our student needs in a proactive way.

As a learning community who works together, our new home allows students, parents, teachers and community organisations to work collaboratively to provide the best education and opportunities for our students.

Brand new equipment, technology, sports facilities and technical learning spaces will help to enhance our delivery of science, food technology, wood and metal working, arts and sporting programs to meet individual student needs.

I look forward to working closely with all levels of the school community at our new state of the art complex and building on the past successes of our school.

Lance Berry
Principal, Marsden High School





Artist impression of a flexible learning space

Your new school

The new school facilities are located at 8 Rhodes Street, Meadowbank.

Marsden High School is located in the upper two levels of the northern wing of the building, and all five levels of the southern wing of the building. An artist impression shows the building layout on the next page.

The dedicated high school library is located on the first and second floor of the central spine that joins the two wings, with a senior learning space located above the library.

The school hall will double as a gymnasium with a full-size basketball court that opens along one wall, creating an impressive center-piece for the school.

The primary and high school facilities are fully separated with their own entrances, offices, libraries, canteens, uniform shops and outdoor spaces.

An open air staircase is located through the centre of the two wings of the building, allowing outdoor access from all floors.

An established garden separates the primary and high schools through the middle of the staircase, and provides a green outlook from learning spaces.

Flexible learning

Flexible learning spaces allow students to learn in new ways using technology-rich teaching spaces for one-to-one, small groups and whole of class activities.

Spaces can be rearranged, separated and connected, allowing teachers to plan learning and teach together to better meet the needs of students.

Building layout and uses

The new school facilities will offer more flexible learning spaces, and updated technical learning spaces and equipment.

The new school facilities are accessible for all students. Lift access will be available to students who cannot use the stairs to move around the school building. Accessible toilets are available on each level.

The high school facilities and outdoor areas are fully separated from the primary school spaces.

Northern Wing:

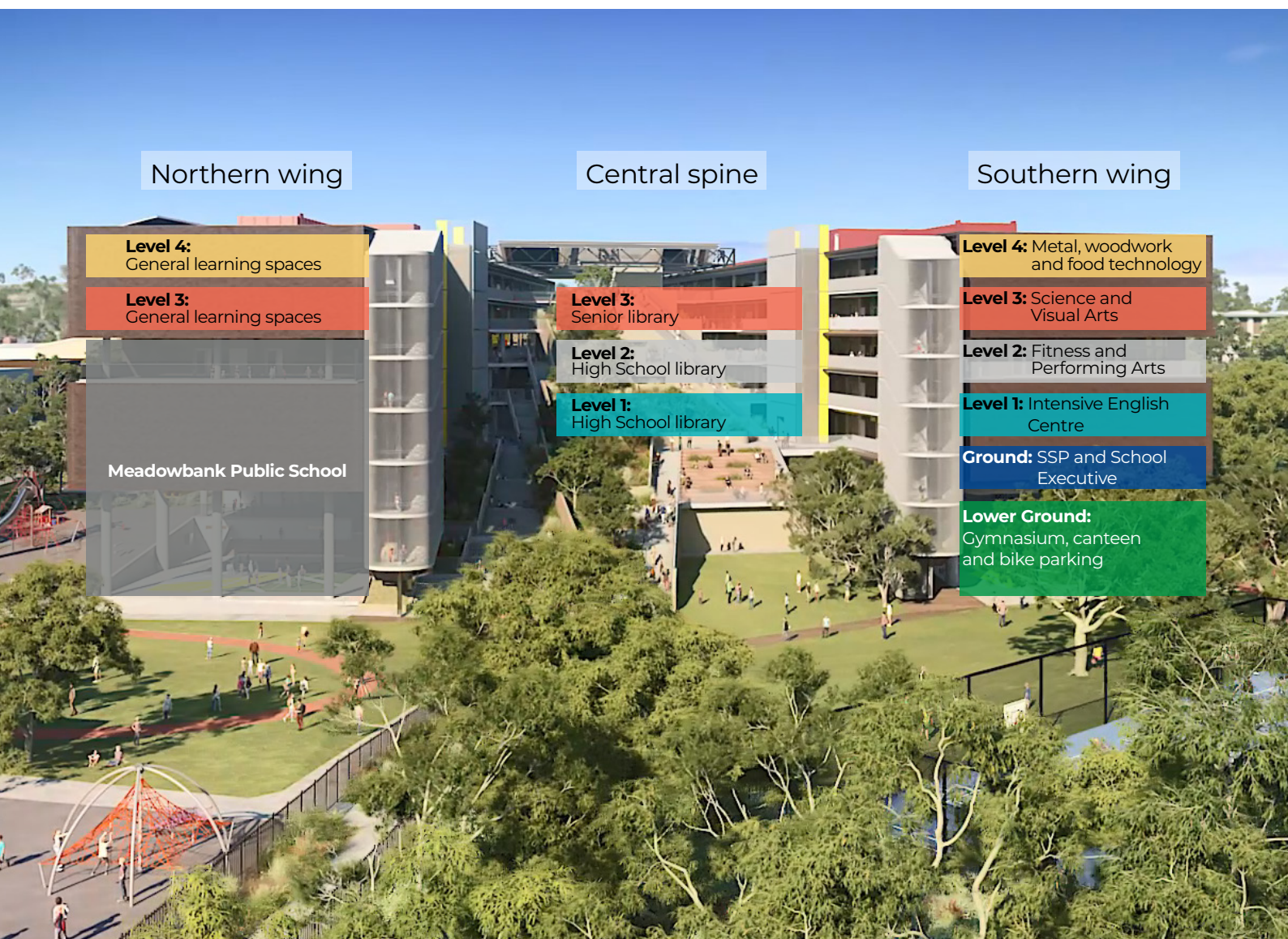
The upper two levels of the northern wing, alongside Rhodes Street, will be general learning classrooms with flexible layouts that can be used in many ways. A number of seminar rooms and staff rooms will be also be provided.

Central Spine:

The high school library will be located on levels one and two of the central spine, between the two wings of the building. A technology learning space will be located on the second floor, and a senior learning space will be located above the library.

Southern Wing:

The southern wing will house administrative spaces, the school hall and gymnasium, Schools for Specific Purposes (SSP) unit, the Intensive English Centre and technical learning spaces.



Recreational spaces

The new school facilities will offer a variety of outdoor spaces, including covered and open air spaces.

Students will have access to covered outdoor spaces on each floor, an undercover multi-sport court, and the gymnasium will open fully along the external wall.

Uncovered outdoor spaces include two open air multi-sport courts, a school oval and a running track.

In addition, the school hall will provide a stage and a state of the art gymnasium with an outlook towards the TAFE green.

Outdoor areas will be fully fenced, and separated from the primary school and TAFE grounds.

School services

The new school canteen will continue to be operated by the school, offering fresh and healthy food options from a purpose-built facility.

The uniform shop will have a dedicated space and will continue to be operated by the school at the new facilities.



Artist impression of the school hall/gymnasium

Access and transport

Access to Marsden High School is set back from Rhodes Street, near Mellor Street.

The primary school has a separate entrance located on Rhodes Street.

School start and finish times will be staggered between the schools to reduce the number of students gathering in the same place and the same time.

Walking and Cycling

A new shared path will travel along Rhodes, Macpherson, Bowden and Squire streets to provide safe access for those walking and riding bikes to school.

New pedestrian crossings will be located across Macpherson and Bowden streets.

Secure, undercover bike parking will be available for 162 bicycles on the lower ground level. A bike path and ramp allows access to the bike parking from Rhodes Street.

Train

Meadowbank train station is the closest train station to the school, about a ten minute walk from school.

West Ryde train station is also nearby, with morning and afternoon school buses dropping off and picking up students in the school bus zones on Rhodes and Macpherson streets.



Artist impression of the high school entry

Bus

NSW school bus routes will be re-routed to the new schools once students are relocated to the new facilities.

Dedicated school buses, as well as buses for excursions and events, will stop at new school bus zones on Rhodes and Macpherson streets. Some local bus routes will also stop in these bus zones.

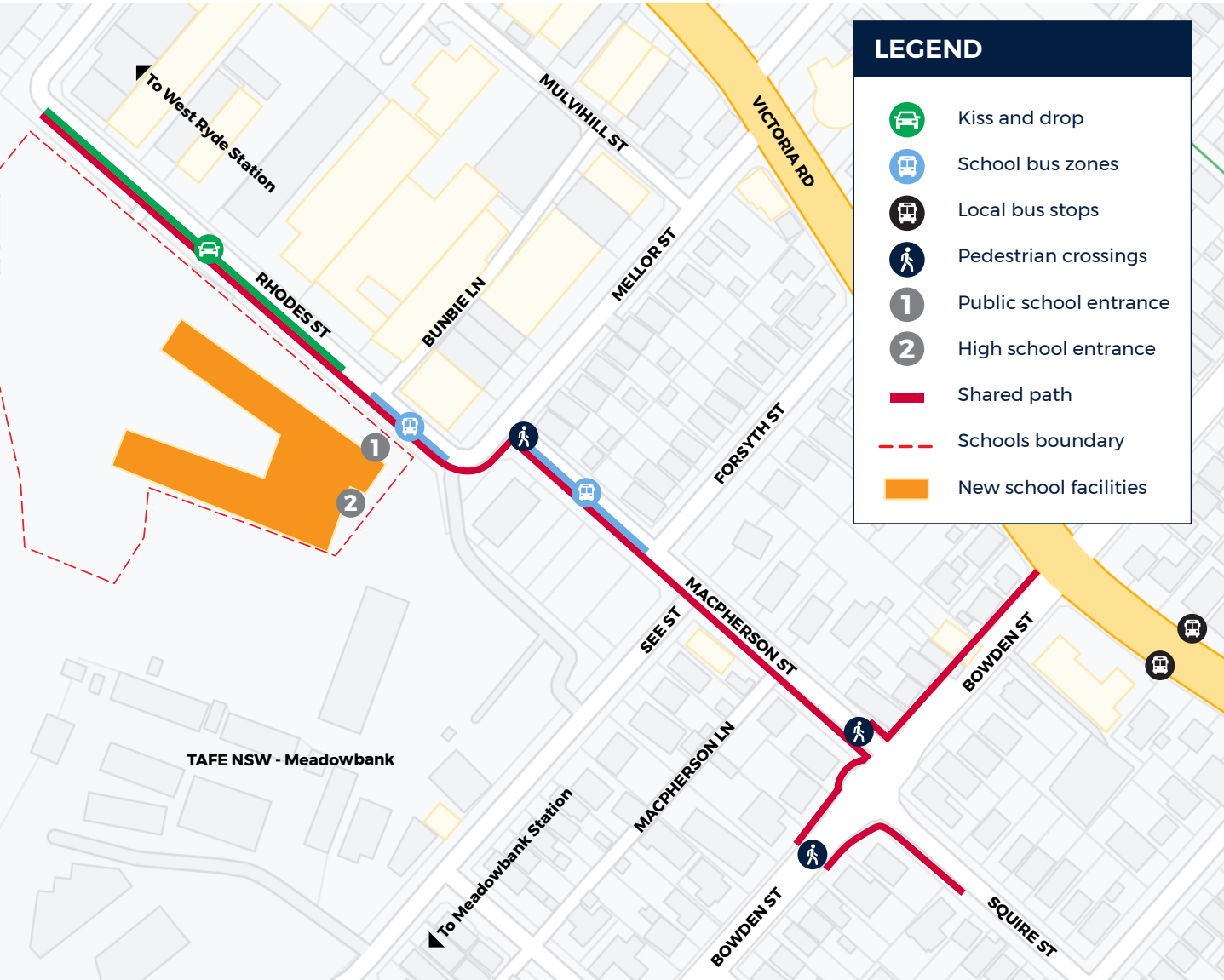
A number of general bus services also stop on Victoria Road, a short walk to the school via Bowden and Macpherson streets.

Detailed information about specific bus routes to the new school facilities will be provided to the school community prior to relocation.

Car

Dedicated kiss-and-drop parking spaces are located on Rhodes Street.

As the school is well connected and easily accessed by walking, cycling and public transport, active and public transport is highly recommended. Parking on local streets is limited and time restricted.



Frequently asked questions

Why is Marsden High School moving?

The schools at the Meadowbank Education and Employment Precinct will cater for 1,000 primary school students, 1,500 secondary school students and a further 120 intensive English Centre students.

Moving to the new precinct will ensure more room for teaching and learning to continue in modern facilities. The new education precinct provides the spaces needed for students as the local population continues to grow.

When will the new facilities open?

Students will attend school at the new facilities at 8 Rhodes Street, Meadowbank from the first day of Term 2, 2022.

What is changing?

Marsden High School will continue to operate the same way at its new location.

There will be no change to the school name, Principal or teaching staff.

Marsden High School will have new start and finish times. School will start at 9.00am and finish at 3.00pm. Tuesday is assembly and sports day, with varying finishing times for each year level.

Do students have to wear the new uniform when we move?

Marsden High School is taking the opportunity to update the school uniform and logo. There will be a phased approach to this change. The school will provide an update on uniforms closer to the relocation date.

Will the school intake area change?

At this stage, there will be no change to the intake area of Marsden High School.

More information regarding school intake areas can be found at schoolfinder.education.nsw.gov.au

Will the high school be separated from the primary school and TAFE?

Meadowbank Public School and Marsden High School will continue to operate as separate primary and secondary schools in dedicated and separated spaces.

Each school will have their own facilities, including entrances, offices, libraries, outdoor spaces, canteens and toilets. There will be no internal access between the schools. School start and finish times will also be staggered.

The high school premises will be separated from the Meadowbank TAFE grounds by a boundary fence.

What outdoor space is available?

The new school facilities will offer a variety of outdoor spaces, including covered and open air spaces.

Students will have access to covered outdoor spaces on each floor, an undercover multi-sport court, and the gymnasium / full-size basketball court will open fully along the external wall.

Uncovered outdoor spaces include two open air multi-sport courts, a school oval and a running track.

Are the new facilities accessible?

The new school facilities are fully accessible. Lift access will be available to students who need it to move around the school building. Accessible toilets are available on each level. All outdoor areas are accessible without steps.

When will more information be available?

More information will be provided in the lead-up to the move to the new school facilities in 2022. This will include information about specific local bus routes, site tours, and plans for the first day of school at the new location.



For a **Translation and Interpreting Service**, call **131 450** and ask them to call the Department of Education - School Infrastructure NSW on **1300 482 651**.

For more information contact:

Email: schoolinfrastructure@det.nsw.edu.au
Phone: 1300 482 651
www.schoolinfrastructure.nsw.gov.au