



Meadowbank Education and Employment Precinct

Project Update | June 2023

Project overview

Meadowbank Public School and Marsden High School relocated to their new home at the Meadowbank Education and Employment Precinct in early 2022. Side by side, the schools have formed a connected education community, supporting students within the one precinct throughout their school years and beyond. The new school facilities cater for 1000 primary school students, 1500 secondary school students and a further 120 Intensive English Centre students.

Progress update

We are delivering a package of Public Domain Improvement works that will assist teachers, students and visitors to access the new school buildings, as well as improve the amenity of the local area.

The Public Domain Design has been developed in collaboration with City of Ryde Council and Transport for NSW (TfNSW). Most of the Public Domain Improvement works were finished before both schools opened in their new location, and the Mellor Street pedestrian crossing works have also been finished.

Next steps - new Hermitage Road footpath

The construction of the new footpath on the western side of Hermitage Road will begin on Monday 3 July 2023.

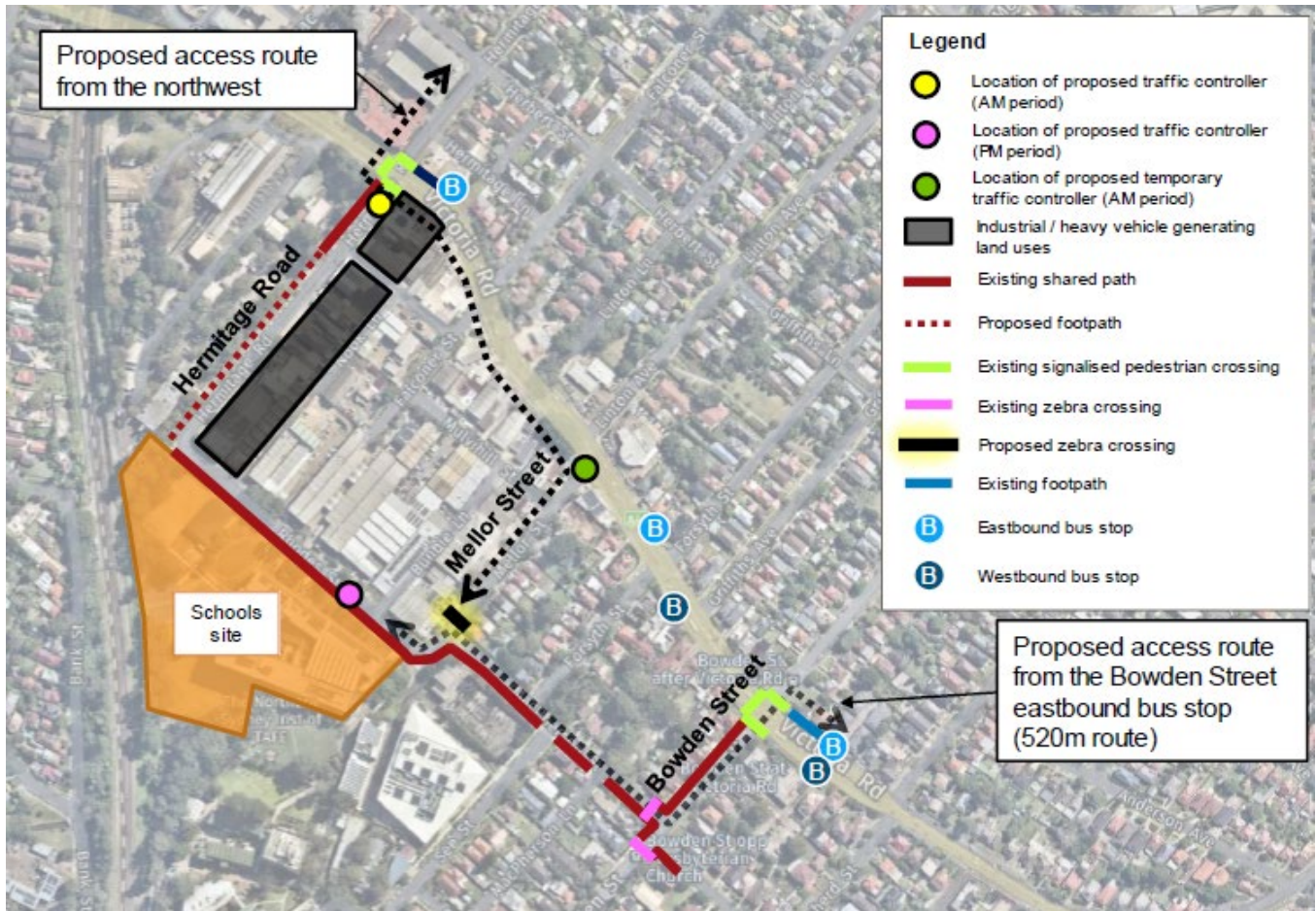
The new footpath will be constructed from the corner of Rhodes Street to the Sydney Water entrance. The works on Hermitage Road are a significant part of the broader Public Domain Improvements to help guide the safe movement of pedestrians and traffic along Hermitage Road and Rhodes Street.

During the works there will be changes to pedestrian and vehicle movements along Hermitage Road from Victoria Road to Rhodes Street. Two-way traffic will be maintained, and traffic control will be in place to ensure the safe movement of pedestrian and vehicles while the works are ongoing. There will be reduced parking on both sides of Hermitage Road for the duration of the works.

An updated Pedestrian Safety Management Plan has been developed with City of Ryde Council and the NSW Department of Planning for Hermitage Road. Pedestrians will be redirected to an alternate walking route to the schools during drop off and pick up times and there will be traffic control to assist with the alternative route to the schools. The alternative pedestrian route is shown on the map over the page.



Map of alternative pedestrian routes during construction of footpath on Hermitage Road



Construction work hours

Standard working hours will be 7 am to 6 pm Monday to Friday, and 8 am to 1 pm on Saturdays. There may be some non-noisy works occurring up to 4 pm on Saturdays, in line with the approved working hours. No work will take place on Sundays or public holidays unless otherwise advised.

Thank you for your patience while we deliver this important infrastructure.

