



Meadowbank Education and Employment Precinct

Project update | December 2023

Project Overview

Meadowbank Public School and Marsden High School relocated to their new home at the Meadowbank Education and Employment Precinct in early 2022. Side by side, the schools have formed a connected education community, supporting students within the one precinct throughout their school years and beyond. The new school facilities cater for 1,000 primary school students, 1,500 secondary school students and a further 120 Intensive English Centre students.

Progress update

We are delivering a package of Public Domain Improvement Works that will assist students, school staff and visitors to access the new school buildings safely, as well as improve the amenity in the local area. The safety of students, school staff and the local community are the highest priority.

Most of the Public Domain Improvement Works were finished before both schools opened in their new location, and the Mellor Street and See Street pedestrian crossing works were finished in early 2023.

New Hermitage Road footpath

Works for the new footpath on the western side of Hermitage Road will continue, with the relocation of Ausgrid power poles, Jemena gas line and NBN cables now complete.

Upcoming works

- continuation of trenching for new Sydney Water watermain diversions
- new cabling for the relocation of Optus and Telstra ground assets
- starting construction for footings for the new footpath.

Standard working hours will be 7 am to 6 pm Monday to Friday, and 8 am to 1 pm on Saturdays. No work will take place on Sundays or public holidays unless otherwise advised.



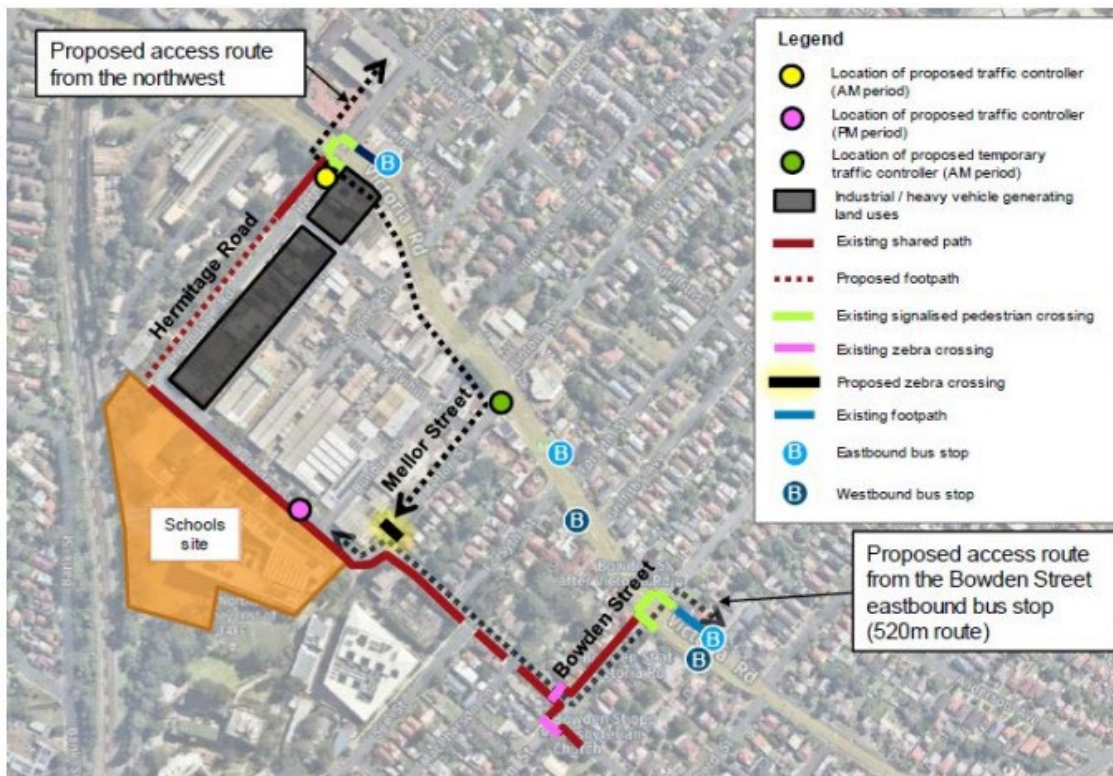
Traffic, parking and access changes

The changes to pedestrian and vehicle movements along Hermitage Road from Victoria Road to Rhodes Street will continue as the works progress. These changes will include:

- Traffic control to ensure the safe movement of pedestrians and traffic.
- Temporary changes to traffic movements or parking which are clearly signposted and monitored by traffic controllers.
- Impacts to parking and traffic movement in the direct vicinity of the works.

We anticipate these works will be finished in mid-2024. Ongoing notifications will be issued to provide regular updates and advise on the progress of these works.

Map of alternative pedestrian routes during construction of footpath on Hermitage Road



Construction work hours over the holidays are Monday to Friday 7 am to 6 pm and Saturday 8 am to 1 pm. No work will be undertaken on Sunday or on public holidays unless otherwise advised.

If you have any queries or concerns about the project, you can contact School Infrastructure NSW during business hours on 1300 482 651 or email schoolinfrastructure@det.nsw.edu.au.



The School Infrastructure NSW office will be closed from 5 pm Friday 22 December 2023 to 9 am Monday 8 January 2024, inclusive. You can continue to contact us during this time, and we will get back to you after we return. If there is an urgent issue please contact the site manager listed on the construction site entry. In an emergency please call triple zero (000).

For the latest information, visit the project webpage edu.nsw.link/MEEP or scan the QR code.