



Aspect of Northern Level 3 and 4

Marsden High School

Welcome Pack

April 2022

Welcome to your new school

The new Marsden High School is now open and ready to use, delivering:



A dedicated high school library with senior learning space



Flexible, multi-purpose learning spaces, as well as modern technical learning spaces



A school hall / gymnasium with full-size indoor basketball court



Open green space for sporting and recreation activities



Expert facilities for targeted learning, wellbeing and cultural awareness programs



Ability for students to complete primary, secondary and vocational education and training in one location

Flexible learning environments

This exciting project has delivered new flexible learning spaces for the next generation of young minds at Marsden High School. The new learning environments offer flexibility where teachers can provide a variety of opportunities for student engagement.

These learning spaces:

- are adaptable and will accommodate multiple class groups in each space.
- feature inclusive learning zones with flexible spaces, enabling students to engage in explicit teaching and embed technology in learning.
- provide opportunities to enhance skills in collaboration, communication, critical thinking, problem solving and creativity.

Recreational spaces

The new school facilities offer a variety of outdoor areas, including covered and open air spaces. Students have access to covered outdoor learning spaces on each floor with an undercover multi-sport court on the playground level.

The hall is a state-of-the-art facility that supports multifaceted use for school assemblies and all school events, with a stage and production equipment

Whilst the schools operate separately, there will be opportunities for us to work collaboratively and share facilities upon negotiation.

Community is core to the values of both schools. The high school gymnasium and other facilities will be available for community hire and use.

Virtual tour

Show your friends and family what your new school looks like at:
tour.lumination.com.au/meadowbank-education-precinct



Southern Ground Level COLA



Southern Ground Level aspect of Central Spine

School entrance

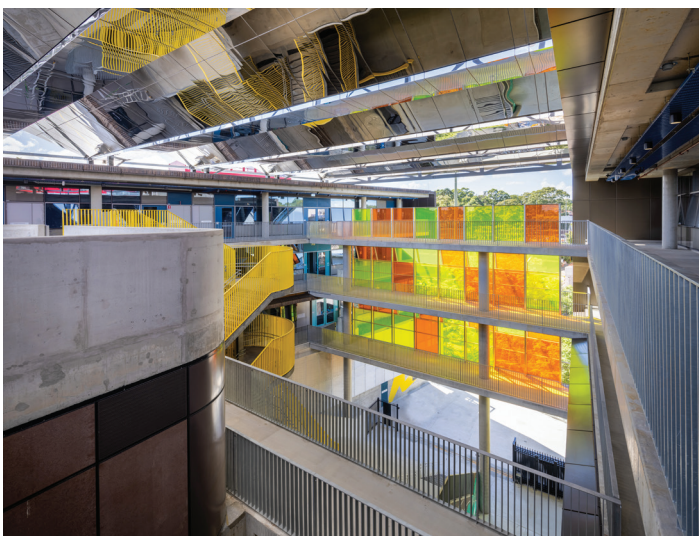
Enter the main entrance at 8 Rhodes Street. The first day at the new school site will be exciting for everyone. Guides will be on site at the main entry to Marsden High School on Rhodes Street to help you navigate the new facilities.

Finding your classrooms

A directory has been developed and included with this pack for students to orientate themselves with their new school facility. This directory correlates with signage around the school, found near the lifts on each level. Please speak to staff at the high school for support.

Travel Access Guide

A comprehensive travel and access plan has been developed to assist parents and students access the new school site. For details on walking, cycling and public transport, please refer to the [Travel Access Guide](#) located on the school website. Way finding signs will be placed around the precinct to assist with accessing the new school facility.



Level 4 View of Marsden High School Entrance



Marsden High School Lectern and school gymnasium stage



Shared Learning space Level 4 South



Marsden High School Gymnasium



Marsden High School Basketball courts



Marsden High school Demonstration kitchen Level 4 South

Further work at the new Education Precinct

Work is continuing to upgrade the Meadowbank TAFE site. Construction will be ongoing throughout 2022. Vehicle movements and deliveries will be minimised during the morning drop off and afternoon pick up times, and work will continue during approved working hours.

A footpath will also be delivered on Hermitage Road. Work on the final design is continuing and School Infrastructure NSW is working with City of Ryde Council and other authorities to plan the works. We will keep the school community updated on progress.

Contact us

For more information about this project contact School Infrastructure NSW:

Website: schoolinfrastructure.nsw.gov.au

Email: schoolinfrastructure@det.nsw.edu.au

Phone: 1300 482 651

For information about school activities and operations, contact the school directly:

Principal: Mr Lance Berry

Website: marsden-h.schools.nsw.gov.au

Email: marsden-h.school@det.nsw.edu.au

Phone: 02 9874 6544