

Matthew Pearce Public School upgrade

Planning update

September 2022

Investing in our schools

The NSW Government is investing \$8.6 billion in school infrastructure over the next four years, continuing its program to deliver 160 new and upgraded schools to support communities across NSW. This builds on the more than \$9.1 billion invested in projects delivered since 2017, a program of \$17.7 billion in public education infrastructure.

The NSW Department of Education is committed to delivering new and upgraded schools for communities across NSW. The delivery of these important projects is essential to the future learning needs of our students and supports growth in the local economy.

Matthew Pearce Public School upgrade

A project to upgrade Matthew Pearce Public School is in the planning phase and is planned to include:

- new permanent learning spaces
- new hall including out of school care (OSHC) facilities and student amenities

The upgrade of Matthew Pearce Public School will include additional fit-for-purpose learning spaces and facilities to meet anticipated enrolment growth in North West Sydney. This complements recently completed projects at Schofields Public School and Excelsior Public School.

The final scope of the upgrade is subject to business case and planning approvals and procurement processes. SINSW is working closely with Matthew Pearce Public School to deliver facilities that meet the needs of the school community.

What have we done so far?

A Project Control Group (PCG) has been established for the project which includes representatives from the Department of Education, representatives from the leadership of Matthew Pearce Public School, planners and design professionals. The purpose of this group is to discuss the needs of the school and how they can best be met within the scope of the project, while ensuring possible future needs are also considered.

For more information contact:

School Infrastructure NSW
Email: schoolinfrastructure@det.nsw.edu.au
Phone: 1300 482 651
www.schoolinfrastructure.nsw.gov.au

Since the announcement of the project in the 2021/22 NSW Budget, we have been working on the following:

- Further analysing demographic trends and the school community needs.
- Conducting site investigations to assess the condition of existing buildings, site surroundings and onsite risks.
- Appointing an architect to develop the design in consultation with the PCG. Design work has so far included master plan option analysis.
- Transport analysis, contamination assessment and project staging.

What's next?

- Ongoing development of the design in consultation with representatives from the Department of Education and Matthew Public School, architects, planners and design professionals.
- Site investigations to assist with infrastructure planning. This will include the drilling of boreholes with vehicle-mounted drilling rigs.

How will we keep you updated?

We will share more information with the local community as the project progresses. An information session will be held at the school after the concept design is finished, for you to find out more about the project and ask any questions. Details will be provided on the School Infrastructure NSW website and shared with the school community.

To stay up to date with the project, please visit the project webpage and view materials published in the 'library' tab. www.schoolinfrastructure.nsw.gov.au/projects/m/matthew-pearce-public-school-upgrade

Alternatively, you can contact us directly on the email address and phone number at the bottom of this page.

Want to know more about how we build and upgrade schools?

We design and deliver schools to suit the individual needs of the local school community. We harness opportunities and solve challenges. As a result, no two schools are exactly the same.

What remains consistent is school infrastructure that empowers teachers to prepare students with the skills and capabilities they need to thrive in a rapidly changing and interconnected world.

Take a look at some of the upgrades we have delivered and see how these varied spaces support teaching and learning.

Simply scan the QR code, or visit edu.nsw.link/SchoolShowcase



Translation and Interpreting Service

If you require interpreter services in **Arabic, Bengali, Hindi, Nepali, Urdu** or any other language call **131 450** and ask this Translation and Interpreting Service to phone School Infrastructure NSW on **1300 482 651**.

For more information contact:

School Infrastructure NSW
Email: schoolinfrastructure@det.nsw.edu.au
Phone: 1300 482 651
www.schoolinfrastructure.nsw.gov.au



The information below takes you through the journey of upgrading or building a new school

Early planning

- Consideration and studies of demographic trends, education requirements, the condition of the existing school buildings, catchment boundaries, heritage requirements, transport links and partnership opportunities.
- Doing so means that we:
 - consider the needs of the local area now and into the future.
 - ensure the right school is designed for the community.
- An important step before an architect or other contractors are appointed and official community engagement commences.

Planning

- Consultants such as architects and project managers are appointed.
- Investigation and review of site and development of master plan options.
- Master planning considers options for the general size, shape and form of buildings for a specific school site.
- A Project Reference Group (PRG) is established.
- Operational, educational and service delivery factors are understood and considered by the PRG.

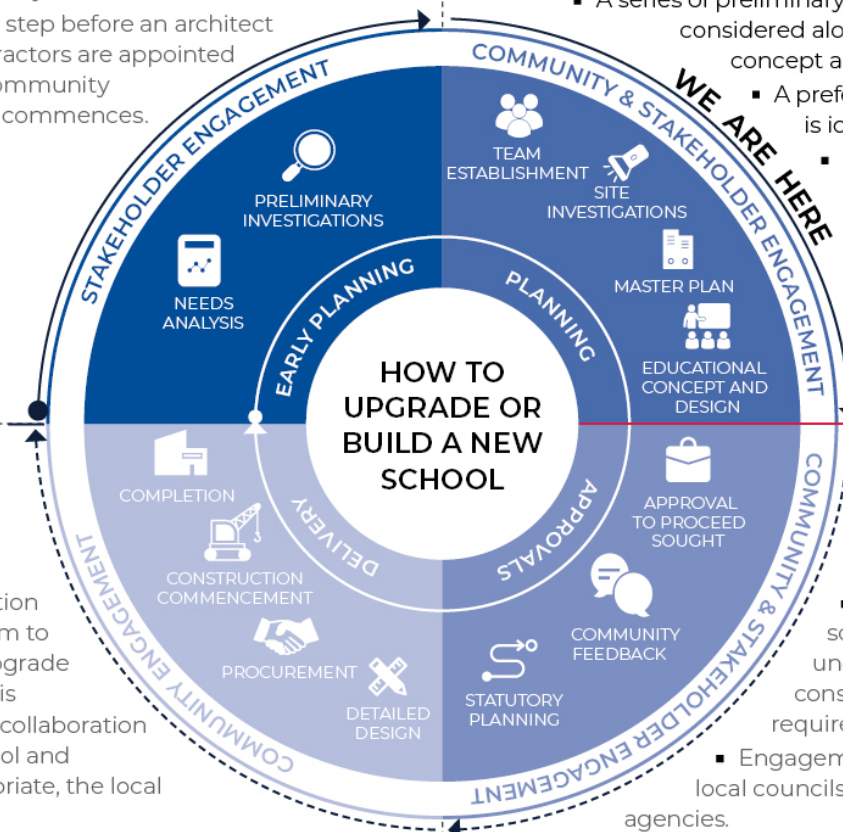
- A series of preliminary master plan options are considered along with the educational concept and design for the school.
- A preferred concept design option is identified.
- Once a preferred option is identified approval is needed in order to progress from planning through to project delivery.

Delivery

- The construction works program to deliver the upgrade to the school is developed in collaboration with the school and where appropriate, the local community.
- Ongoing consultation with Principal, staff and other school users.
- Throughout detailed design and construction updates are provided to the local community.

Approvals

- Workshops continue with school and local community to understand challenges and constraints and identify future requirements.
- Engagement of technical specialists, local councils and other government agencies.
- Statutory planning approval process.
- Opportunity for local community to view and provide feedback upon submission of the Development Application.
- Scope of work and concept design is further defined.



For more information contact:

School Infrastructure NSW
 Email: schoolinfrastructure@det.nsw.edu.au
 Phone: 1300 482 651
www.schoolinfrastructure.nsw.gov.au