



Example of a new administration area delivered by School Infrastructure NSW

## Manly Village Public School

Project update

October 2021

### Investing in our schools

The NSW Government is investing \$7.9 billion over the next four years, continuing its program to deliver 215 new and upgraded schools to support communities across NSW. This is the largest investment in public education infrastructure in the history of NSW.

The NSW Department of Education is committed to delivering new and upgraded schools for communities across NSW. The delivery of these important projects is essential to the future learning needs of our students and supports growth in the local economy.

### Manly Village Public School upgrade

The NSW Government is increasing its investment in public education infrastructure, with funding for 44 new and upgraded school projects announced as part of the NSW 2021/22 Budget. This includes an upgrade of Manly Village Public School which will provide relocated and upgraded administration areas, new fit-for-purpose learning spaces and some improvements to existing facilities. Subject to development consent, the benefits of the project will include:

- relocation and upgrade to administration facilities
- new fit-for-purpose learning spaces including a new special programs space and additional breakout rooms and storage spaces
- new Out of School Hours Care (OSHC) facilities in the school hall.

### Progress summary

A Masterplan option has been developed in consultation with a Project Reference Group (PRG) with input from Department of Education, Manly Village Public School staff and a representative from the parent community. The project has now been approved to progress from planning through to delivery.

---

### For more information contact:

School Infrastructure NSW  
Email: [schoolinfrastructure@det.nsw.edu.au](mailto:schoolinfrastructure@det.nsw.edu.au)  
Phone: 1300 482 651  
[www.schoolinfrastructure.nsw.gov.au](http://www.schoolinfrastructure.nsw.gov.au)

**Next steps**

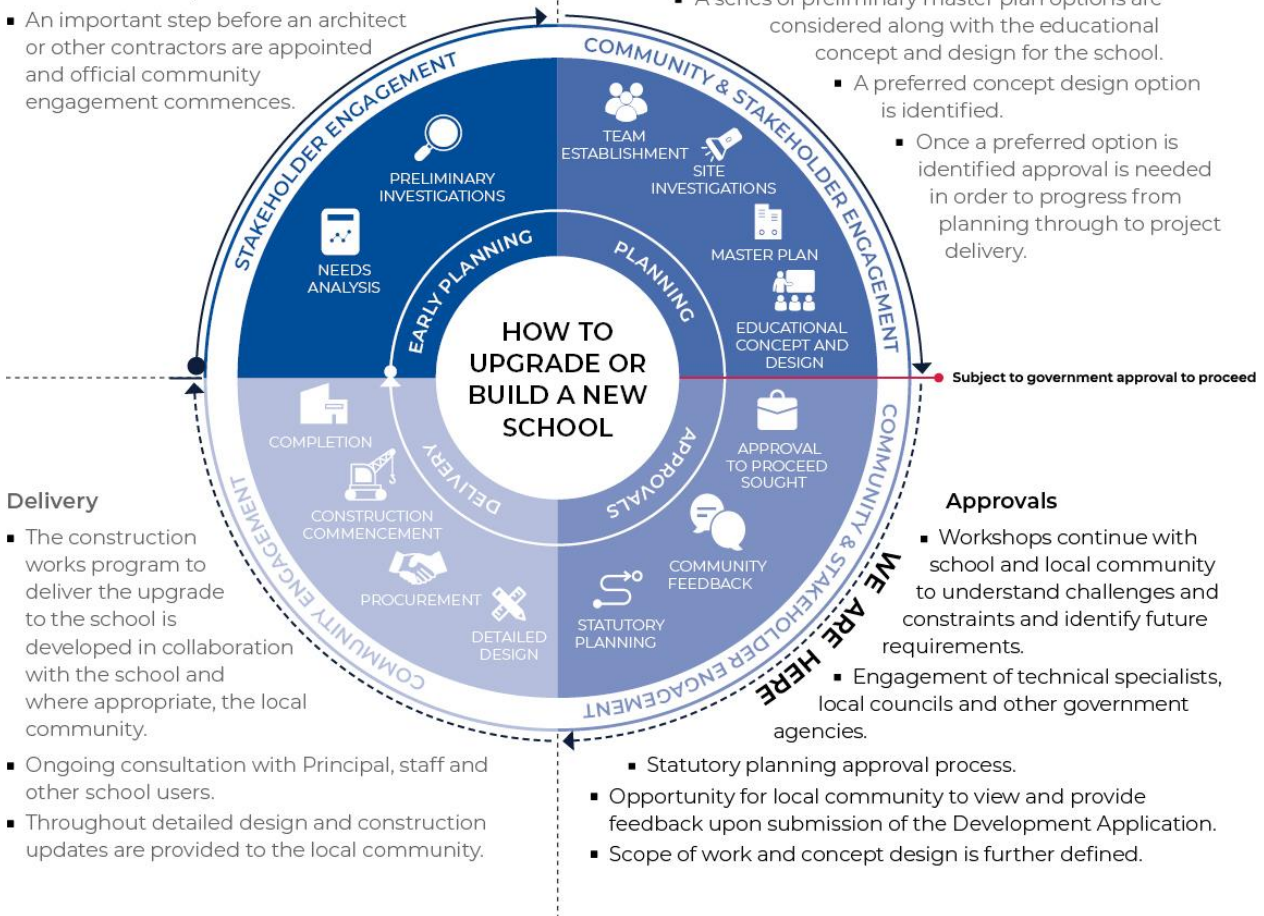
- Appointment of architects, building engineers, planners and heritage consultants to further develop the planning and design of the project
- Ongoing consultation with the PRG in the design process
- Preparation of documents for the statutory planning approval as per the planning pathway.

**Early planning**

- Consideration and studies of demographic trends, education requirements, the condition of the existing school buildings, catchment boundaries, heritage requirements, transport links and partnership opportunities.
- Doing so means that we:
  - consider the needs of the local area now and into the future.
  - ensure the right school is designed for the community.
- An important step before an architect or other contractors are appointed and official community engagement commences.

**Planning**

- Consultants such as architects and project managers are appointed.
- Investigation and review of site and development of master plan options.
- Master planning considers options for the general size, shape and form of buildings for a specific school site.
- A Project Reference Group (PRG) is established.
- Operational, educational and service delivery factors are understood and considered by the PRG.
  - A series of preliminary master plan options are considered along with the educational concept and design for the school.
  - A preferred concept design option is identified.
- Once a preferred option is identified approval is needed in order to progress from planning through to project delivery.



**Approvals**

- Workshops continue with school and local community to understand challenges and constraints and identify future requirements.
- Engagement of technical specialists, local councils and other government agencies.

- Statutory planning approval process.
- Opportunity for local community to view and provide feedback upon submission of the Development Application.
- Scope of work and concept design is further defined.

**How can I get involved?**

We are committed to working together with our school communities and other stakeholders to deliver the best possible learning facilities for students. Your feedback on this project is important to us. We will notify the community ahead of information sessions and you can contact us on the details below.

**For more information contact:**

School Infrastructure NSW  
 Email: schoolinfrastructure@det.nsw.edu.au  
 Phone: 1300 482 651  
 www.schoolinfrastructure.nsw.gov.au

