

# Macquarie Park new primary school

Planning update

November 2022

## Investing in our schools

The NSW Government is investing \$8.6 billion in school infrastructure over the next four years, continuing its program to deliver 160 new and upgraded schools to support communities across NSW. This builds on the more than \$9.1 billion invested in projects delivered since 2017, a program of \$17.7 billion in public education infrastructure.

The NSW Department of Education is committed to delivering new and upgraded schools for communities across NSW. The delivery of these important projects is essential to the future learning needs of our students and supports growth in the local economy.

## Macquarie Park new primary school

The NSW Government is increasing its investment in public education infrastructure, with funding for 23 new and upgraded school projects announced as part of the NSW 2022/23 Budget. This includes a new primary school in Macquarie Park to meet anticipated enrolment growth in the area.

This project forms part of a broader strategy of investment in the Ryde area to cater for predicted enrolment growth. The investment also includes the Macquarie Park Education Campus and an upgrade to Ryde Secondary College.

## Progress summary

We are currently in the planning phase for the project. We have completed master planning and concept design for the school and appointed consultants such as architects and project managers to assist in the development of the project.

We have submitted a business case to NSW Treasury to seek government approval to proceed with the new primary school.

## How can I get involved?

We are committed to working together with our school communities and stakeholders to deliver the best learning facilities for students.

A dedicated project page has been published on the School Infrastructure NSW website at [edu.nsw.link/MacquarieParkNPS](https://edu.nsw.link/MacquarieParkNPS), which will be kept updated.

You can also contact us via our community information line and email on the details below.



For a **Translation and Interpreting Service**, call **131 450** and ask them to call the Department of Education - School Infrastructure NSW on **1300 482 651**.

## For more information contact:

School Infrastructure NSW  
Email: [schoolinfrastructure@det.nsw.edu.au](mailto:schoolinfrastructure@det.nsw.edu.au)  
Phone: 1300 482 651  
[www.schoolinfrastructure.nsw.gov.au](http://www.schoolinfrastructure.nsw.gov.au)

The information below takes you through the journey of building the new school.

**Early planning**

- Consideration and studies of demographic trends, education requirements, the condition of the existing school buildings, catchment boundaries, heritage requirements, transport links and partnership opportunities.
- Doing so means that we:
  - consider the needs of the local area now and into the future.
  - ensure the right school is designed for the community.
- An important step before an architect or other contractors are appointed and official community engagement commences.

**Planning**

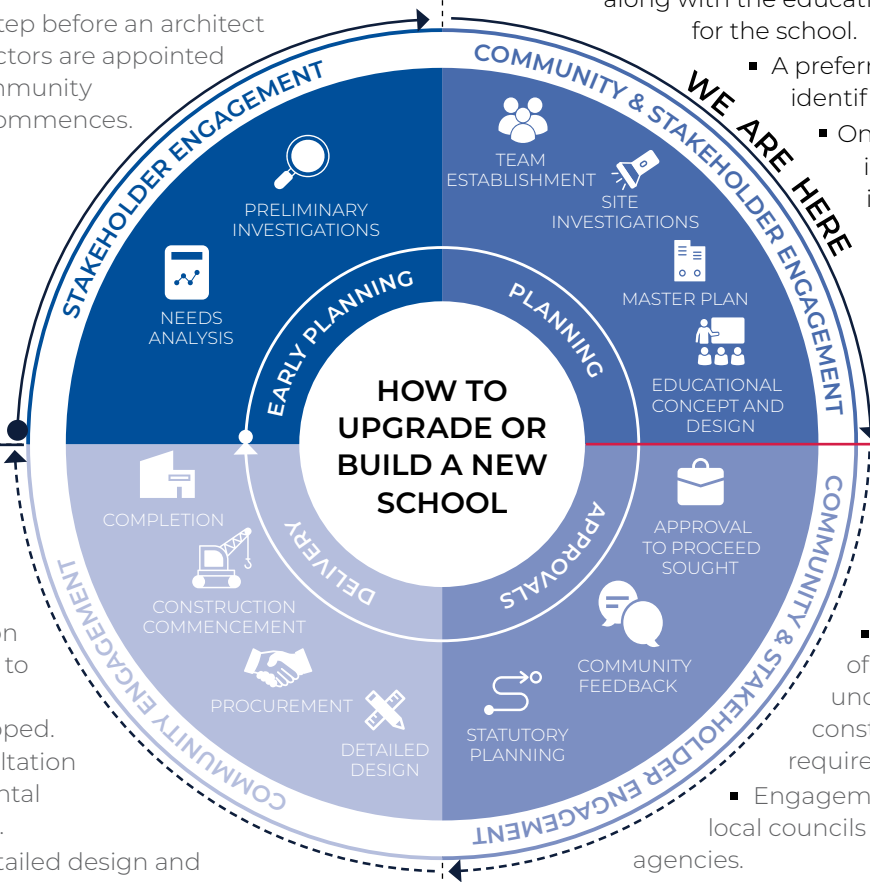
- Consultants such as architects and project managers are appointed.
- Investigation and review of site and development of master plan options.
- Master planning considers options for the general size, shape and form of buildings for a specific school site.
- Operational, educational and service delivery factors are understood and considered by the project team.
- A series of preliminary master plan options are considered along with the educational concept and design for the school.
  - A preferred concept design option is identified.
  - Once a preferred option is identified approval is needed in order to progress from planning through to project delivery.

**Delivery**

- The construction works program to deliver the new school is developed.
- Ongoing consultation with departmental representatives.
- Throughout detailed design and construction updates are provided to the local community.

**Approvals**

- Workshops with Department of Education representatives to understand challenges and constraints and identify future requirements.
  - Engagement of technical specialists, local councils and other government agencies.
- Statutory planning approval process.
- Opportunity for local community to view and provide feedback upon submission of the Development Application.
- Scope of work and concept design is further defined.



**For more information contact:**

School Infrastructure NSW  
 Email: [schoolinfrastructure@det.nsw.edu.au](mailto:schoolinfrastructure@det.nsw.edu.au)  
 Phone: 1300 482 651  
[www.schoolinfrastructure.nsw.gov.au](http://www.schoolinfrastructure.nsw.gov.au)

