



This image is an example of facilities we are building for students across NSW

New public school at Liverpool

Project update

March 2021

Investing in our schools

The NSW Government is investing \$7 billion over four years, continuing its program to deliver more than 200 new and upgraded schools to support communities across NSW. This is the largest investment in public education infrastructure in the history of NSW.

The NSW Department of Education is committed to delivering new and upgraded schools for communities across NSW. The delivery of these important projects is essential to the future learning needs of our students and supports growth in the local economy.

Project overview

Planning is underway to build a new primary school for Liverpool on the grounds of the existing Liverpool Boys and Girls High School. The project, when fully completed, will include:

- 44 Classrooms
- 4 Special program units
- 4 Support units
- 2 Preschool activity rooms
- New library, hall and COLA
- New OSHC, administration and amenities.

The new school is due to be complete ready for Term One, 2023.

Want to find out more?

We will hold an information session on the new planned school at Hart Park, Warwick Farm.

Date: Wednesday 17 March 2021

Time: 2pm-6pm

Venue: Hart Park, Hart St, Warwick Farm

Can I get this document translated?

If you would like this document translated in your language, please email the address below and quote 'Liverpool New'

إذا أردت ترجمة لهذه الوثيقة بلغتك، يرجى إرسال طلبك بالبريد الإلكتروني على العنوان المذكور أدناه مع ذكر اسم الوثيقة: "Liverpool New"

Ако желите да се овај документ преведе на ваш језик, молимо да пошаљете захтев путем мејла на доњу адресу и назначите "Liverpool New"

यदि आप इस दस्तावेज का अनुवाद अपनी भाषा में करवाना चाहते/चाहती हैं, तो कृपया नीचे दिए गए पते पर ई-मेल करके निवेदन करें और "Liverpool New" का हवाला दें।

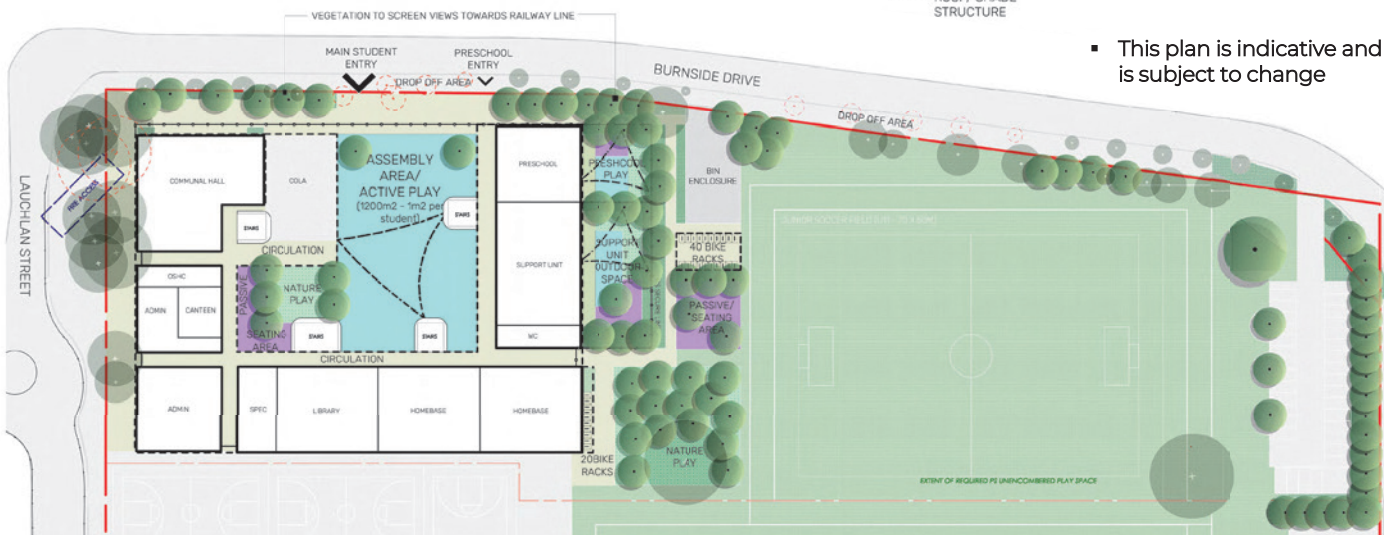
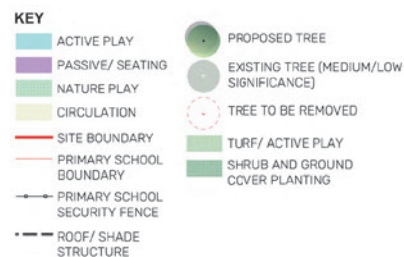
Nếu quý vị muốn có bản dịch tiếng Việt của tài liệu này, vui lòng gửi yêu cầu của quý vị qua email đến địa chỉ dưới đây và nêu chữ "Liverpool New"

For more information contact:

School Infrastructure NSW
Email: schoolinfrastructure@det.nsw.edu.au
Phone: 1300 482 651
www.schoolinfrastructure.nsw.gov.au

Indicative plan for new school

- 44 classrooms.
- 4 Special program units.
- 4 Support units.
- 2 Preschool activity rooms.
- New library, hall and COLA.
- New OSHC, administration and amenities.



- This plan is indicative and is subject to change

Frequently asked questions

When will the work take place?

Early works are expected to start Term 4 this year, with the main works occurring across 2022. The upgrade is expected to be ready for 2023.

Where is the new school located?

The new school is on the existing site of Liverpool Girls High School and Liverpool Boys High School, on the corner of Lachlan Street and Burnside Drive.

What is a COLA, a Special Programs Unit and a Support Unit?

A Covered Outdoor Learning Area (COLA) is an assembly area beside the hall. It is used to protect students and staff from the weather during break times and provides an opportunity to take the classroom outdoors.

The Special Programs Unit contains additional learning spaces that cater for specific group activities such as art, music, reading recovery, and clubs.

Support Units are designed to accommodate students with disability and/or additional learning needs.

What is the catchment area for the new school?

The catchment area will be determined closer to the opening of the school. School catchments, once decided, will be available on the School Finder website my.education.nsw.gov.au/school-finder.

Details on how to enrol will be shared closer to the completion of the project.

How can I give feedback or ask questions?

For more information or to provide comments, please contact School Infrastructure NSW (details below) or use the QR code.



At the NSW Department of Education, we recognise the traditional custodians of the lands and waterways where we work and live. We celebrate the First Peoples' unique cultural and spiritual relationship to Country and acknowledge the significance of Aboriginal cultures in Australia.

For more information contact:

School Infrastructure NSW
Email: schoolinfrastructure@det.nsw.edu.au
Phone: 1300 482 651
www.schoolinfrastructure.nsw.gov.au