

# Project overview

Lismore South Public School and Lismore South Public Ngunniboo Jarjums Preschool suffered extensive damage during the 2022 floods, with flood water entering the school and damaging most buildings as well as the school grounds.

The NSW Government is committed to rebuilding Lismore South Public School. An investigation into the viability of the Lismore South Public School site has confirmed our intention to rebuild the school back at its original location.

The new primary school is designed to be 2 storeys high to maximise flood resilience and outdoor space, with modern classrooms grouped into hubs to provide flexible spaces for teaching and learning.

The rebuilt school will include:



Raised buildings for flood resilience



Multipurpose hall for sport and performance



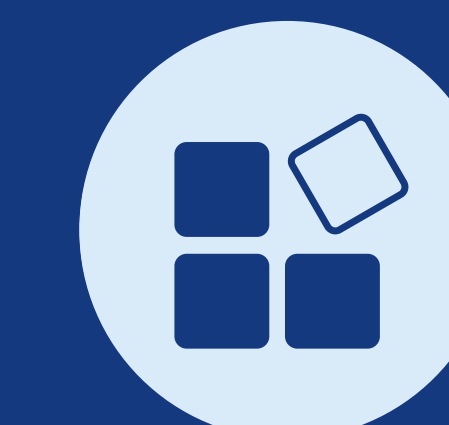
Undercrofts for all weather learning and play



Games court



Library



Pre-school space



Classrooms for specialists support

## Rebuilding Lismore South Public School

For more information phone: 1300 482 651  
Email: [schoolinfrastructure@det.nsw.edu.au](mailto:schoolinfrastructure@det.nsw.edu.au)  
[schoolinfrastructure.nsw.gov.au](http://schoolinfrastructure.nsw.gov.au)

We would like to acknowledge the Bundjalung people as the traditional custodians of this land and also pay our respects to elders both past and present.



# Proposed site plan

The layout of the rebuilt school is U-shaped to maximise play space and allow for a visual connection through to the school playground and COLA. The main school entrance and staff car parking will be on Kyogle Street. The bus drop off zones will be on Phyllis Street. The site and room layouts may change as the concept design is developed.

## First floor



## Ground level



## Rebuilding Lismore South Public School

For more information phone: 1300 482 651  
 Email: [schoolinfrastructure@det.nsw.edu.au](mailto:schoolinfrastructure@det.nsw.edu.au)  
[schoolinfrastructure.nsw.gov.au](http://schoolinfrastructure.nsw.gov.au)

We would like to acknowledge the Bundjalung people as the traditional custodians of this land and also pay our respects to elders both past and present.

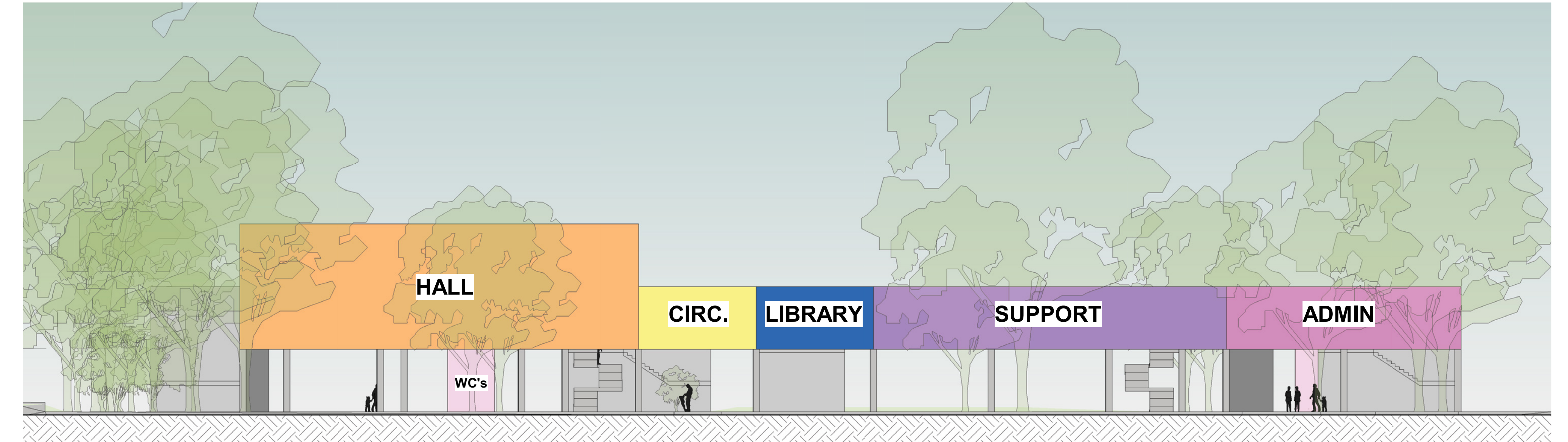


# Flood resilient design

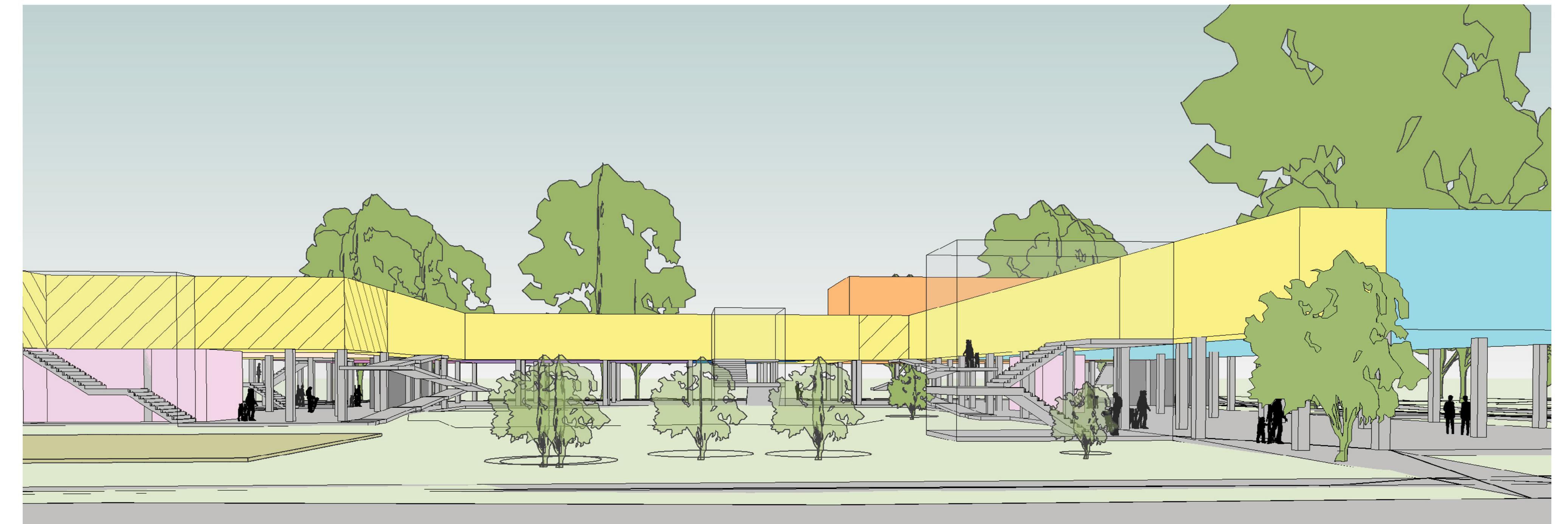
Investigations into the viability of rebuilding at Lismore South Public School considered flood risk on the site and flood resilient school design.

- All core school facilities will be built at about 4m above natural ground – which is 500mm higher than the 2022 flood level. This includes the hall, classrooms, administration, library, and separate preschool spaces. The school spaces will be accessed via lifts, ramps or stairs.
- Raising all buildings will minimise disruption from any future flood events so that students can return to face-to-face learning at their school much sooner.
- The raised building will be supported by structures that will be built in a flood resilient way, and will allow the ground floor and playground to be more easily cleaned and restored.

A flood safety and evacuation plan for the school has been developed in consultation with the SES and will be submitted as part of the planning application.



View from Kyogle Street (not true facade)



View from Phyllis Street (not true facade)

## Rebuilding Lismore South Public School

For more information phone: 1300 482 651  
Email: [schoolinfrastructure@det.nsw.edu.au](mailto:schoolinfrastructure@det.nsw.edu.au)  
[schoolinfrastructure.nsw.gov.au](http://schoolinfrastructure.nsw.gov.au)

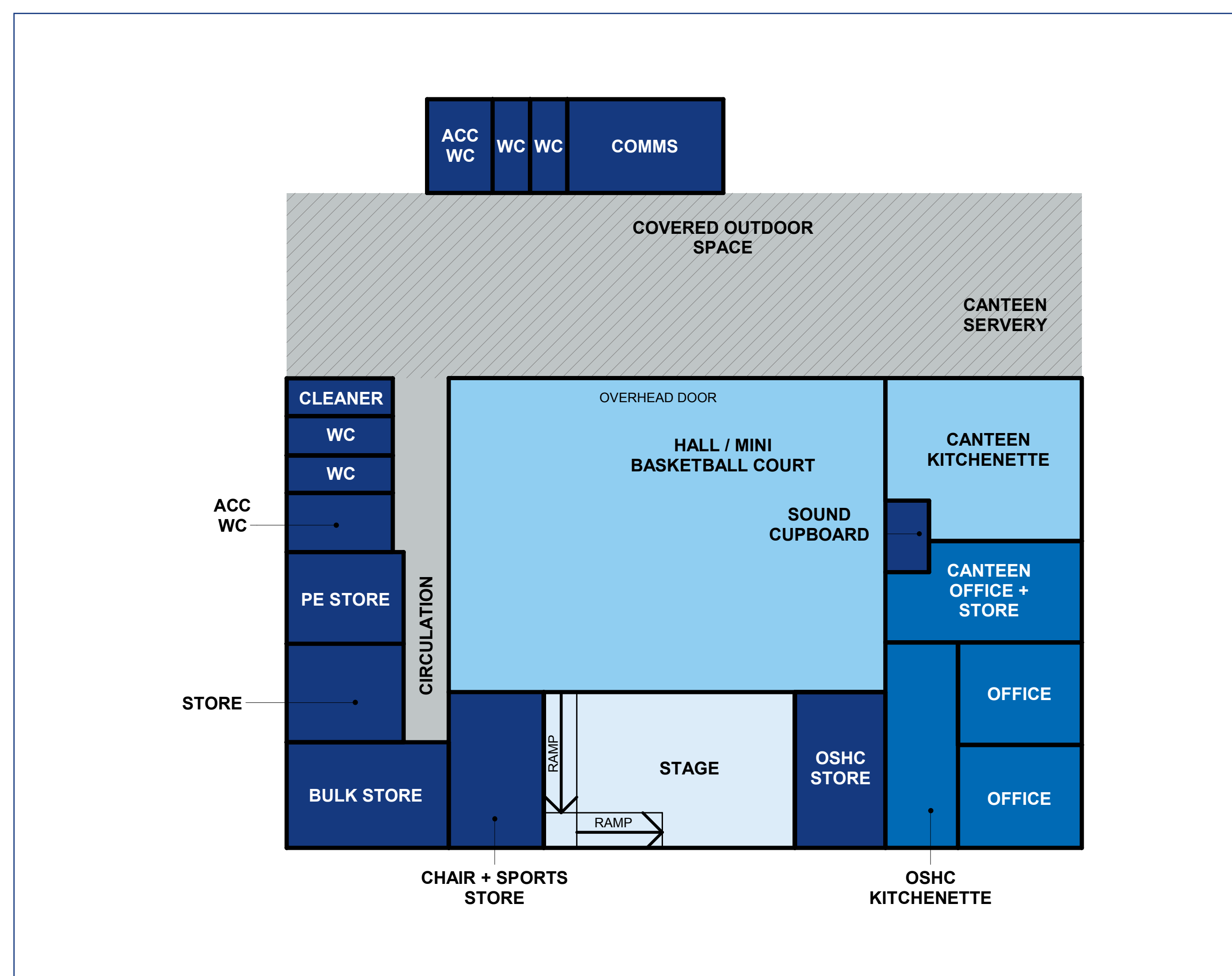
We would like to acknowledge the Bundjalung people as the traditional custodians of this land and also pay our respects to elders both past and present.



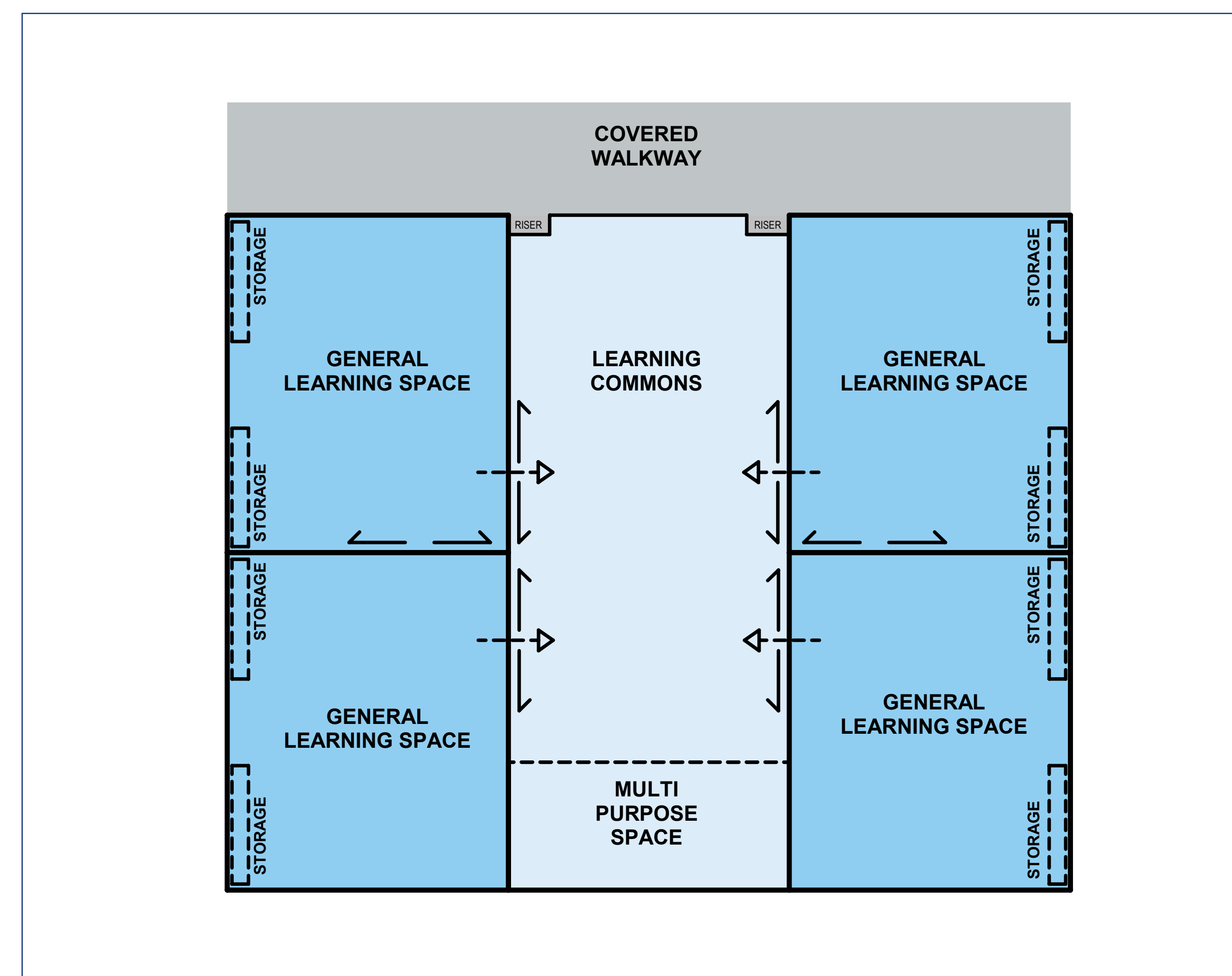
# Classrooms, hall, administration, and upstairs facilities

The internal designs of the school buildings will be finalised as concept designs are developed.

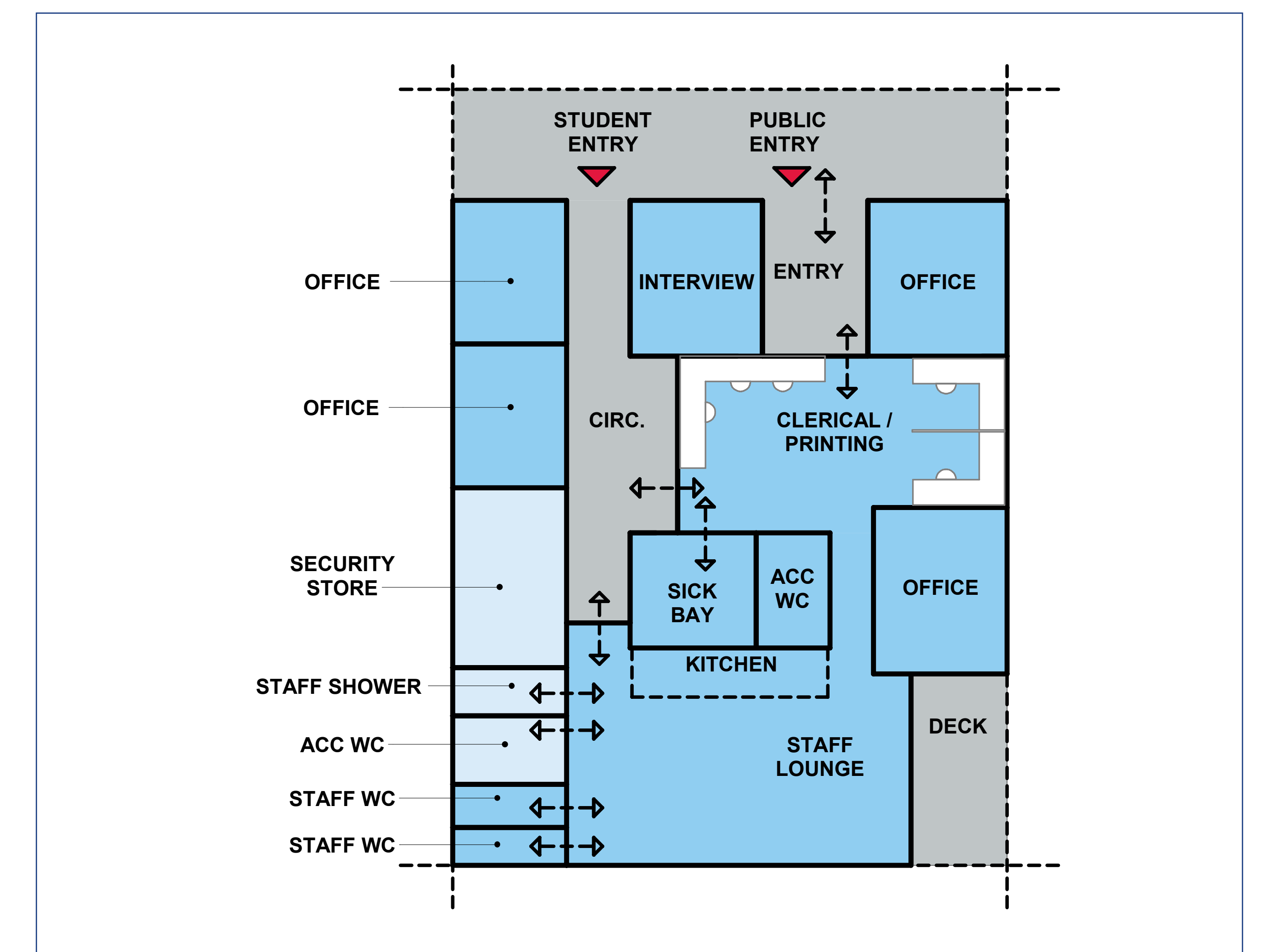
Proposed school hall



Proposed classroom hub



Proposed administration space



## Rebuilding Lismore South Public School

For more information phone: 1300 482 651  
Email: [schoolinfrastructure@det.nsw.edu.au](mailto:schoolinfrastructure@det.nsw.edu.au)  
[schoolinfrastructure.nsw.gov.au](http://schoolinfrastructure.nsw.gov.au)

We would like to acknowledge the Bundjalung people as the traditional custodians of this land and also pay our respects to elders both past and present.



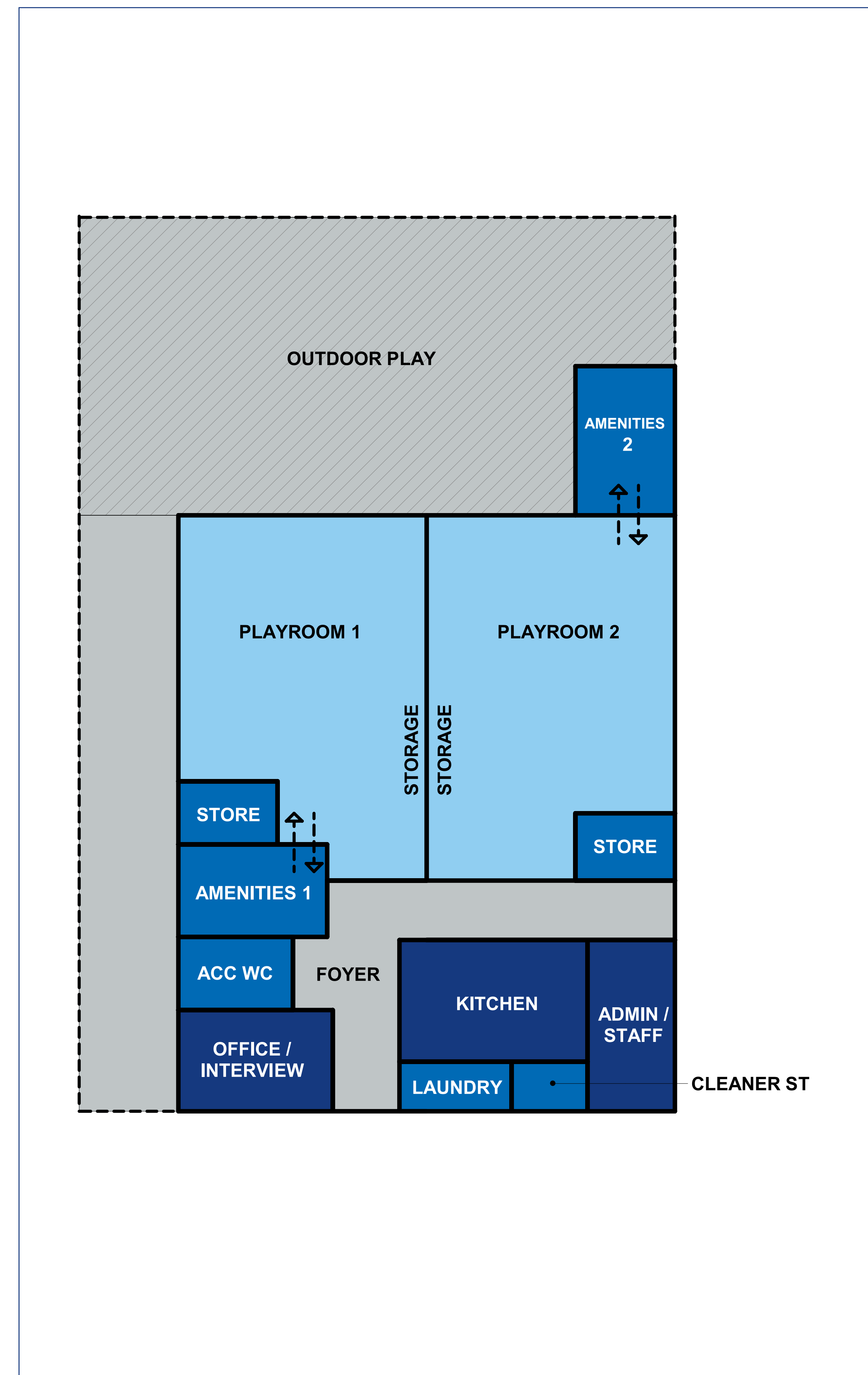
# Lismore South Public School Ngulliboo Jarjums Preschool

In response to staff feedback, K-6 and the preschool will both enter the same way to better integrate the preschool with the primary school, and at the same time provide distinct classroom and play areas for the younger students.

The preschool will have its own first floor play area and toilets off the main classrooms, as well as toilets and play area on the ground floor.

The preschool design has been considered in consultation with preschool staff, and to meet preschool specific guidelines and requirements.

## Proposed first floor preschool layout



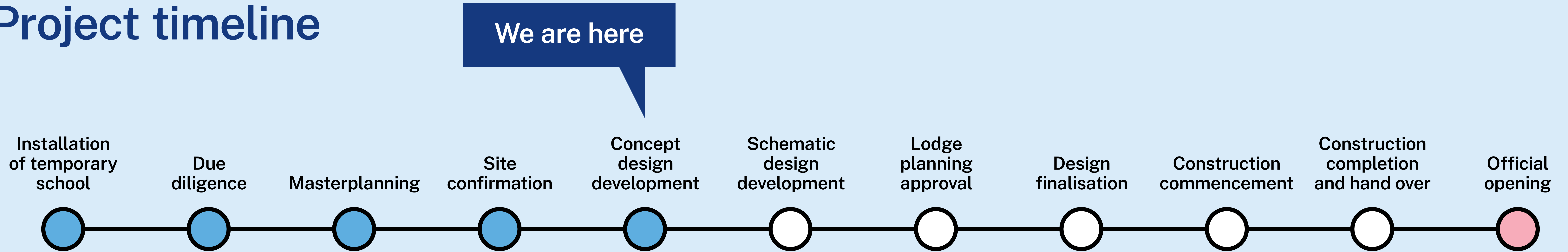
## Rebuilding Lismore South Public School

For more information phone: 1300 482 651  
Email: [schoolinfrastructure@det.nsw.edu.au](mailto:schoolinfrastructure@det.nsw.edu.au)  
[schoolinfrastructure.nsw.gov.au](http://schoolinfrastructure.nsw.gov.au)

We would like to acknowledge the Bundjalung people as the traditional custodians of this land and also pay our respects to elders both past and present.



## Project timeline



## What's next?

### Finalise design



### Planning approval



### Construction



We will work with the Project Reference Group (PRG), to finalise the school designs, including landscape plans and concept designs. Concept designs will give more of an idea of what the school façade will look like.

Due to the costs associated with rebuilding Lismore South Public School in a more flood resilient way, the school will need to be approved as a State Significant Development. This means the approval authority is the Department of Planning Housing and Infrastructure (DPHI).

Once we have finalised designs, we will submit a State Significant Development Application (SSDA) to rebuild Lismore South Public School. The SSDA will be placed on public exhibition for community comment.

Planning approval could take up to 12 months due to the complexities of rebuilding on the school site.

The first floor Lismore South Public School buildings will be built off site through our Manufacturing for Schools program. This means we will be able to rebuild to a very high standard and more efficiently.

Once planning approval is in place, we expect construction to take 18 months.

## Rebuilding Lismore South Public School

For more information phone: 1300 482 651  
Email: [schoolinfrastructure@det.nsw.edu.au](mailto:schoolinfrastructure@det.nsw.edu.au)  
[schoolinfrastructure.nsw.gov.au](http://schoolinfrastructure.nsw.gov.au)

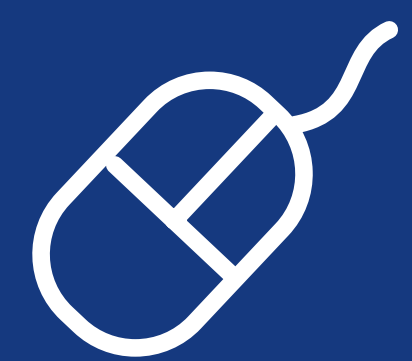
We would like to acknowledge the Bundjalung people as the traditional custodians of this land and also pay our respects to elders both past and present.



# Consultation and keeping the community informed

## Talk to the project team

You can speak with someone from the School Infrastructure NSW project team about the proposed Lismore South Public School rebuild at:



### Website

Stay up to date by visiting the School Infrastructure NSW website  
[schoolinfrastructure.nsw.gov.au](https://schoolinfrastructure.nsw.gov.au)



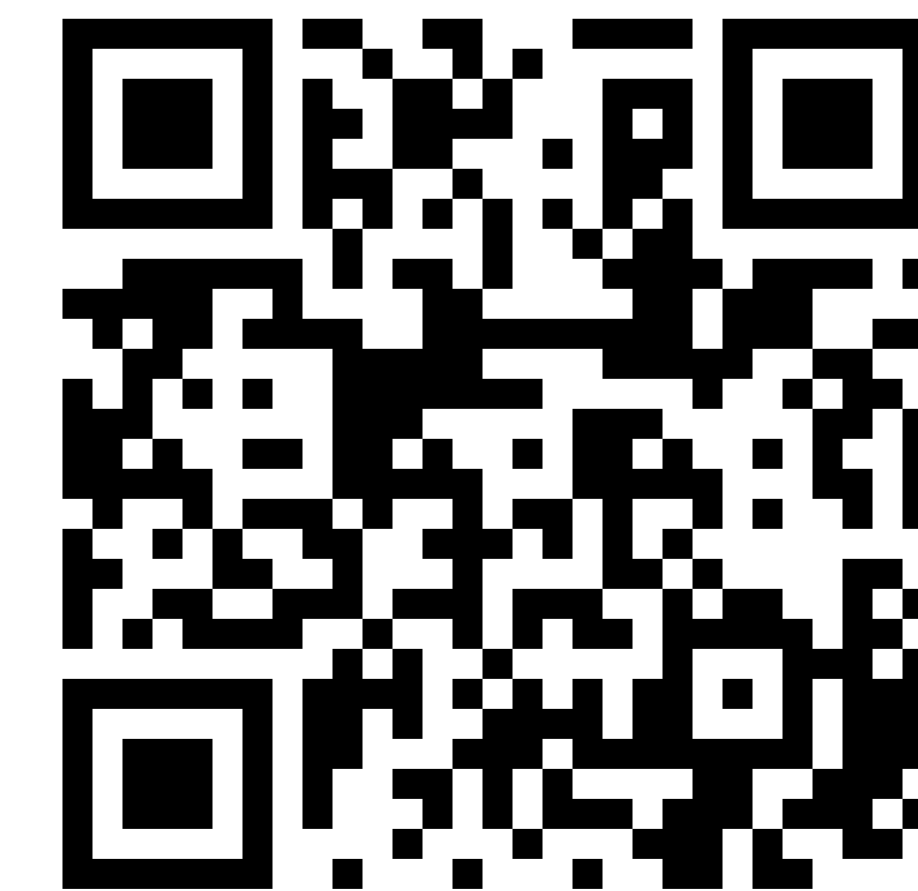
### Email

Contact the Community Engagement team by emailing  
[schoolinfrastructure@det.nsw.edu.au](mailto:schoolinfrastructure@det.nsw.edu.au)



### Phone

Contact us between 9 am and 5 pm, Monday to Friday  
on **1300 482 651**



## Stay informed

We will continue to keep the community updated throughout the rebuilding of Lismore South Public School.

You can also find our planning updates, FAQs and upcoming consultation or events on our Lismore South Public School project page.

## Rebuilding Lismore South Public School

For more information phone: 1300 482 651  
Email: [schoolinfrastructure@det.nsw.edu.au](mailto:schoolinfrastructure@det.nsw.edu.au)  
[schoolinfrastructure.nsw.gov.au](https://schoolinfrastructure.nsw.gov.au)

We would like to acknowledge the Bundjalung people as the traditional custodians of this land and also pay our respects to elders both past and present.