



Example of new primary school classroom

# Lismore South Public School

Information Pack | March 2024

Lismore South Public School and Lismore South Public Ngulliboo Jarjums Preschool suffered extensive damage during the 2022 floods, with flood water entering the school and damaging most buildings as well as the school grounds.

An investigation into the viability of the Lismore South Public School site has confirmed our intention to rebuild the school back at its original location, with school facilities that include:



Flexible classrooms



New administration spaces



Library



Hall



Canteen

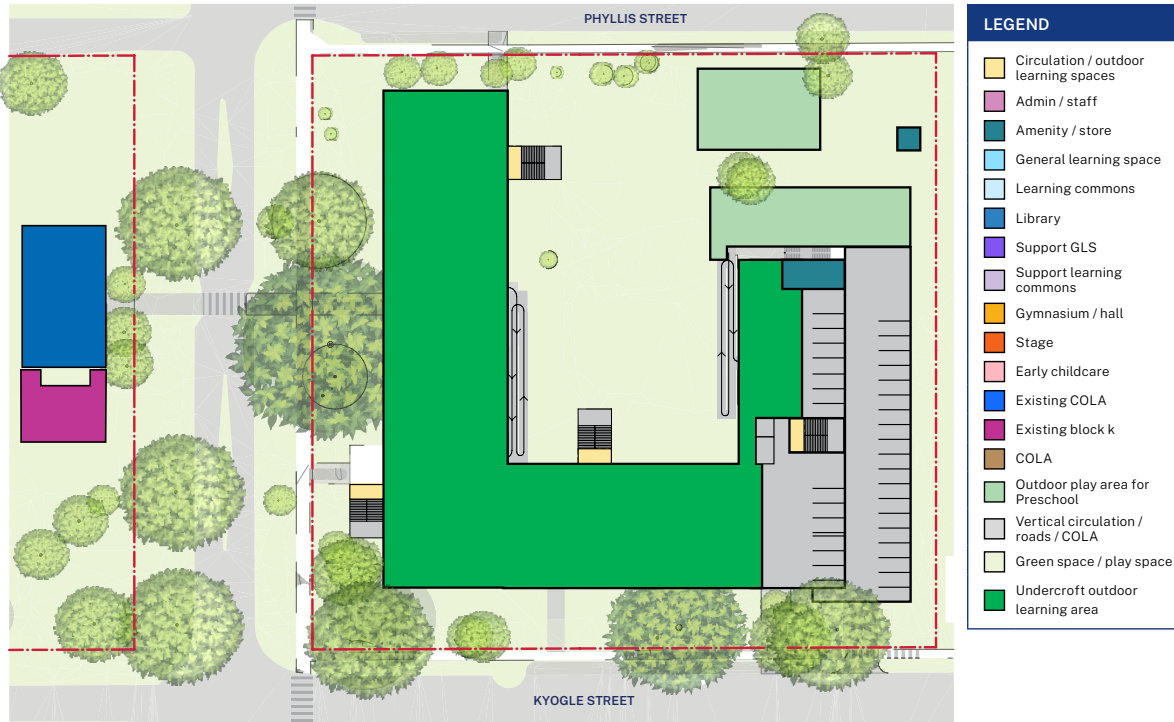


Preschool classroom and play areas

# Lismore South Public School proposed site plan

The layout of the rebuilt school is U shaped to maximise play space and allow for a visual connection through to the playground and COLA on the other side of Wilson Street. The main school entrance and staff car parking will be on Kyogle Street. The bus drop off zones will be on Phyllis Street. The site plans and room layouts may change as the concept design is developed.

## Ground floor



## First floor



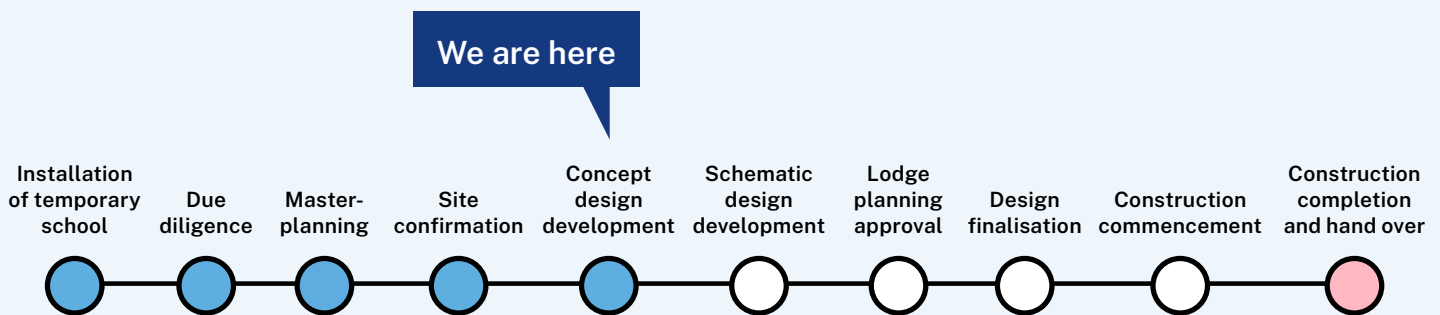
# Flood resilient design

Investigations into the viability of rebuilding at Lismore South Public School considered flood risk on the site and flood resilient school design.

- ✓ All core school facilities will be built at about 4m above natural ground – which is 500mm higher than the 2022 flood level. This includes the hall, classrooms, administration, library, and separate preschool spaces. The school spaces will be accessed via 2 lifts, ramps or stairs.
- ✓ Raising all buildings will minimise disruption from any flood events in the future so that students can return to face-to-face learning at their school much sooner.
- ✓ The raised buildings will be supported by structures that are built in a structurally flood resilient way, and the ground floor and playground will be more easily cleaned and restored.

A flood safety and evacuation plan for the school has been developed in consultation with the SES and will be submitted as part of the planning application.

## Timeline



## Next steps

### 1. Finalise design

We will work with the Project Reference Group (PRG), to finalise the school designs, including landscape plans and concept designs. Concept designs will give more of an idea of what the school façade will look like.

### 2. Planning approval

Due to the costs associated with rebuilding Lismore South Public School in a more flood resilient way, the school will need to be approved as a State Significant Development. This means the approval authority is the Department of Planning Housing and Infrastructure (DPHI).

Once we have finalised designs, we will submit a State Significant Development Application (SSDA) to rebuild Lismore South Public School. The SSDA will be placed on public exhibition for community comment.

Planning approval could take up to 12 months due to the complexities of rebuilding on the school site.

We are hoping to lodge a planning application in mid-2024.

### 3. Construction

The first floor of the Lismore South Public School buildings will be built off site. This means we will be able to rebuild to a very high standard and more efficiently.

## Frequently asked questions

### **Will Lismore South Public School Ngulliboo Jarjums Preschool be included as part of rebuilding Lismore South Public School?**

Yes. The preschool needs are being considered as part of planning and design for the rebuild, in consultation with the school.

### **What was considered in the site assessment?**

The investigation into the viability of the site looked at issues such as:

- emergency access and evacuation, flood levels and required building heights,
- the ongoing costs of clean-up and interruption to school operations as a result of potential future flooding; and
- feedback from the consultation with the school community in November 2023. You can see the consultation summary on the Lismore South Public School **project page**.

### **What will happen to existing buildings?**

All buildings at Lismore South Public School were extensively damaged by the floods and will be replaced by new buildings. Demolition of the flood damaged buildings will form part of the SSDA.

### **How long will rebuilding take?**

We are hoping to lodge planning approval by mid-2024.

Once planning approval is in place, we expect construction to take 18 months.

## For more information

We are committed to working together with our school communities and other stakeholders to deliver the best possible learning facilities for students.

We will work closely with the school community up to date across the planning, design and delivery of the rebuilt school. You can stay up to date by visiting the School Infrastructure NSW Website [schoolinfrastructure.nsw.gov.au](https://schoolinfrastructure.nsw.gov.au) or scanning the QR code.



## Contact us

Contact the Community Engagement team by:

**Email:** [schoolinfrastructure@det.nsw.edu.au](mailto:schoolinfrastructure@det.nsw.edu.au)

**Phone:** Contact us between 9:00am and 5:00pm, Monday to Friday on 1300 482 651