

# Lindfield Learning Village

## Works notification

August 2021

We are in the final stages of delivering Stage 2 of Lindfield Learning Village. This will provide additional learning spaces, specialist technical learning spaces and a senior home base focusing on specialised expertise and wellbeing support to transition students between school and their first post-school destinations.

### Temporary lane closure of Millwood Ave on 26 August 2021

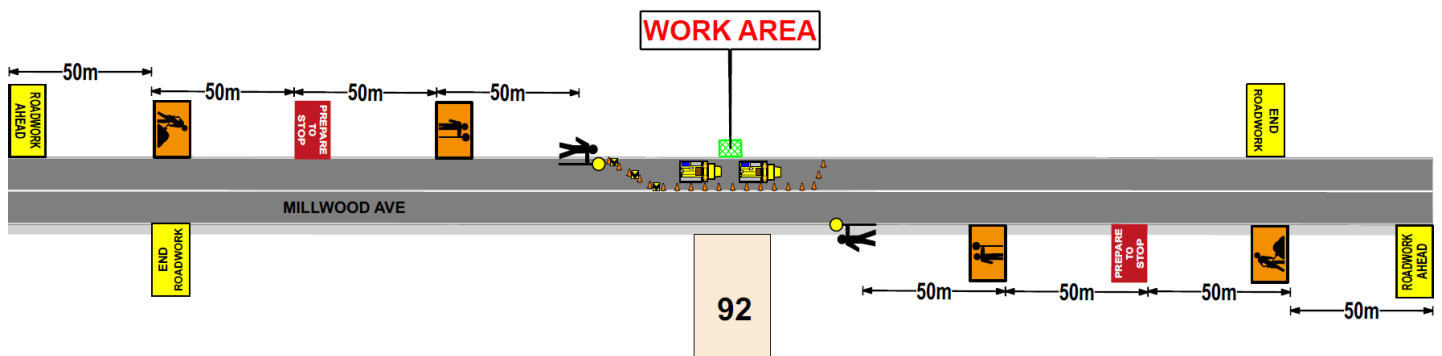
As part of this project, Ausgrid will be undertaking works to remove overhead earth cables on Millwood Avenue, Chatswood. To accommodate these works, a partial road closure will be required. While traffic will be maintained in both directions, traffic will move only in one direction at a time.

These works will take place from 10 pm to 2 am on Thursday 26 August 2021 and are expected to have minimal disruption on neighbours.

The lane adjacent to Blue Gum Creek will be temporarily closed between Lady Game Drive and Fullers Rd/Range Street (see map below).

This partial road closure will be managed in accordance with an approved Traffic Management Plan. Power supply to the local area will not be affected during these works and minimal noise disruption is expected.

Thank you for your patience while we deliver this important school infrastructure.



### For more information contact:

School Infrastructure NSW  
Email: [schoolinfrastructure@det.nsw.edu.au](mailto:schoolinfrastructure@det.nsw.edu.au)  
Phone: 1300 482 651  
[www.schoolinfrastructure.nsw.gov.au](http://www.schoolinfrastructure.nsw.gov.au)