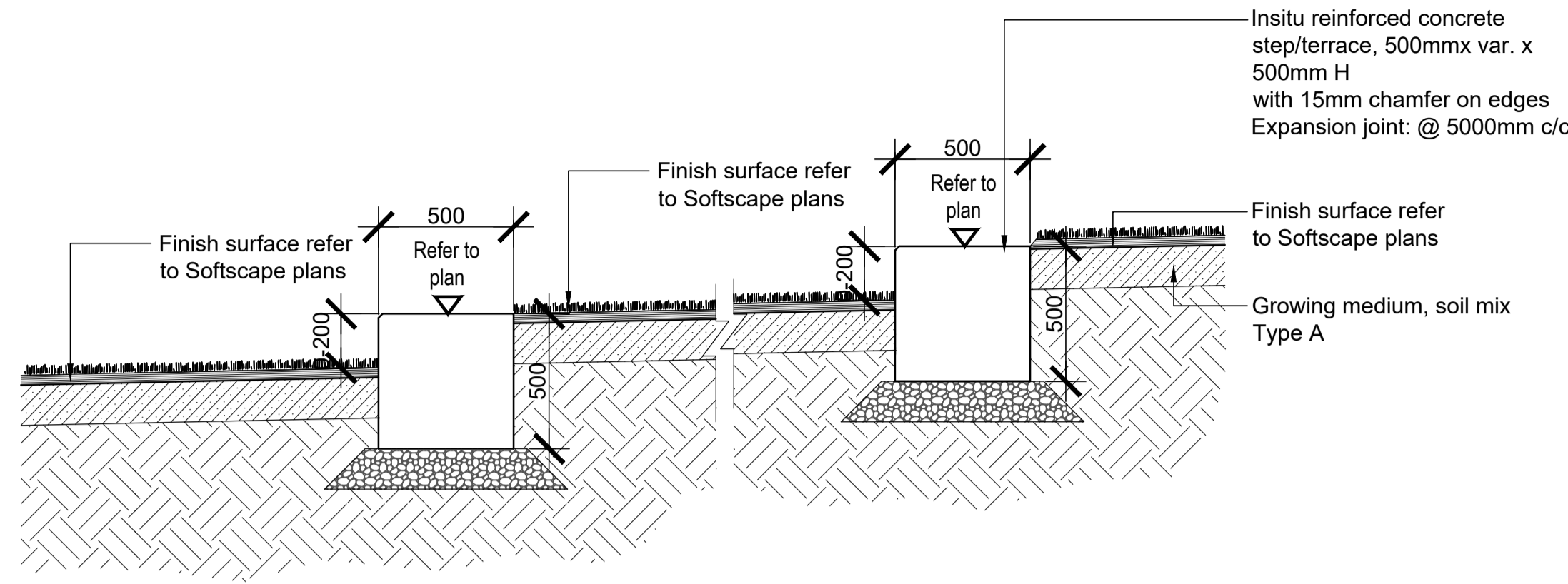
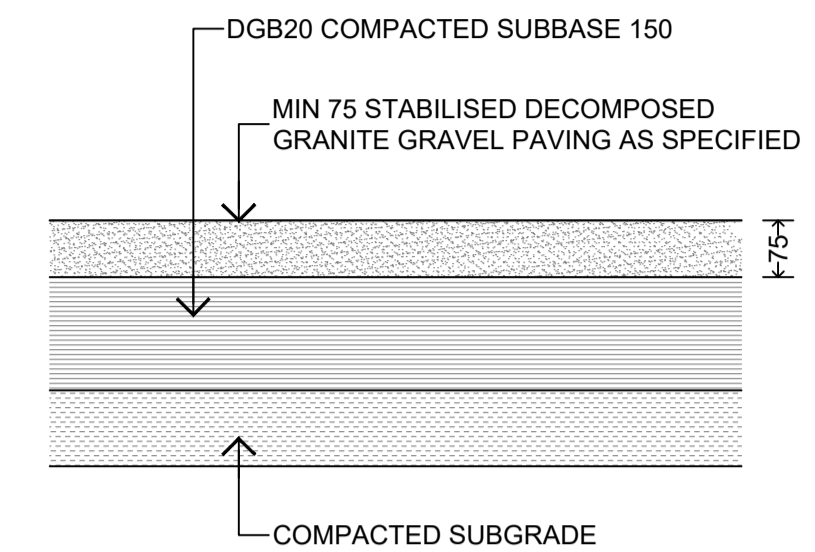


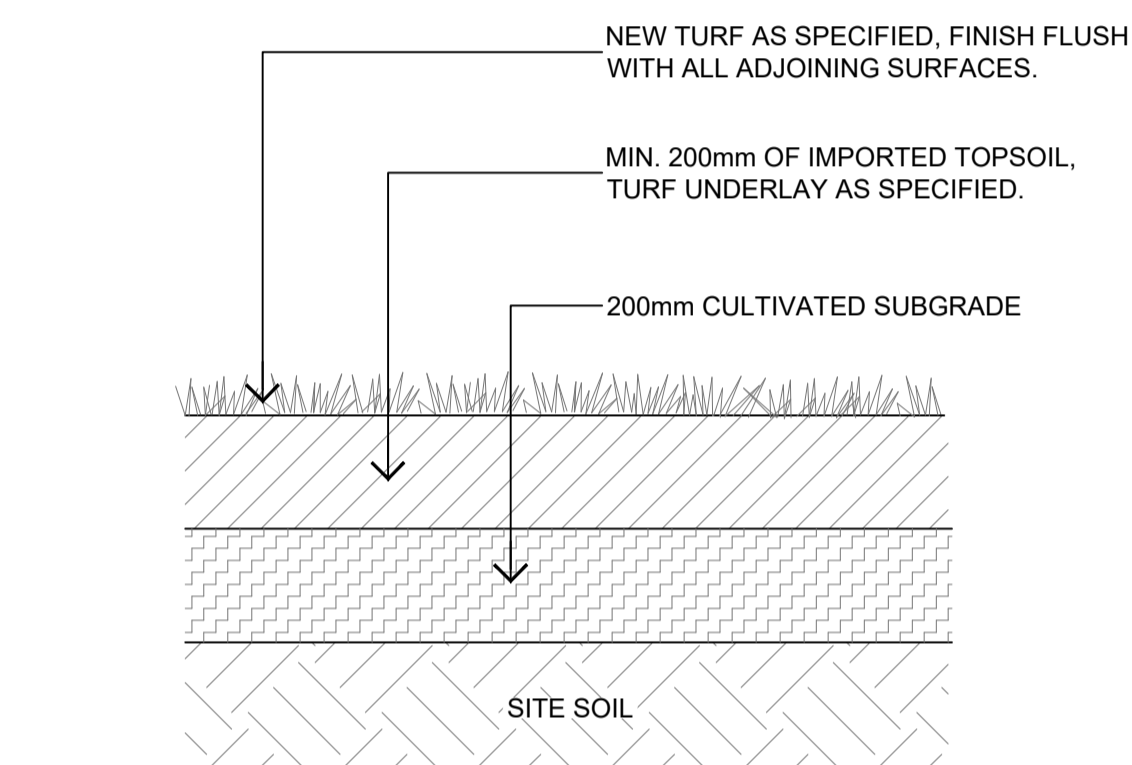
X TYPICAL MASS PLANTING IN DEEP SOIL
1:10 @ A1



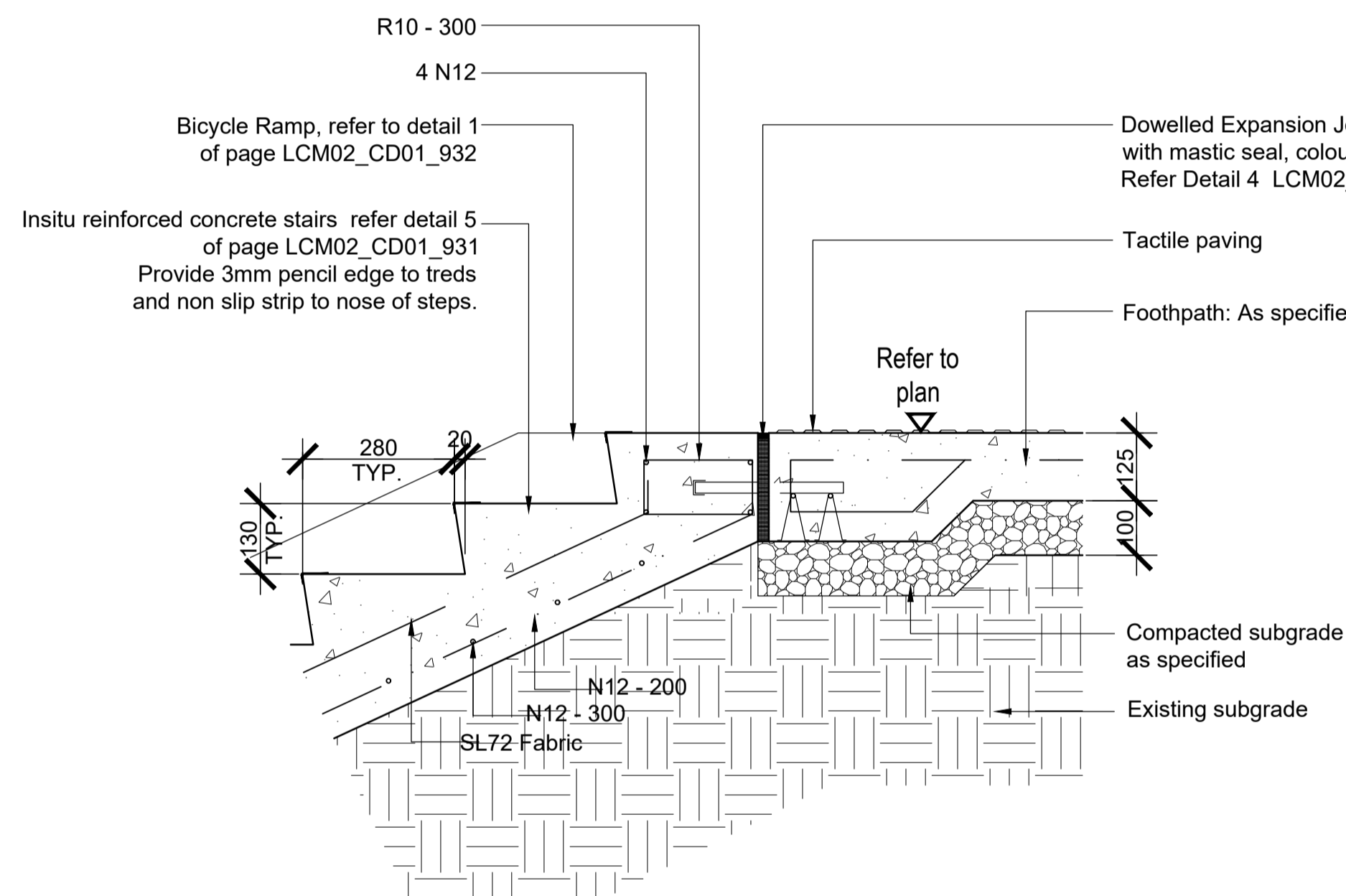
X SANDSTONE LOG STEP / TERRACED
section Scale 1:20



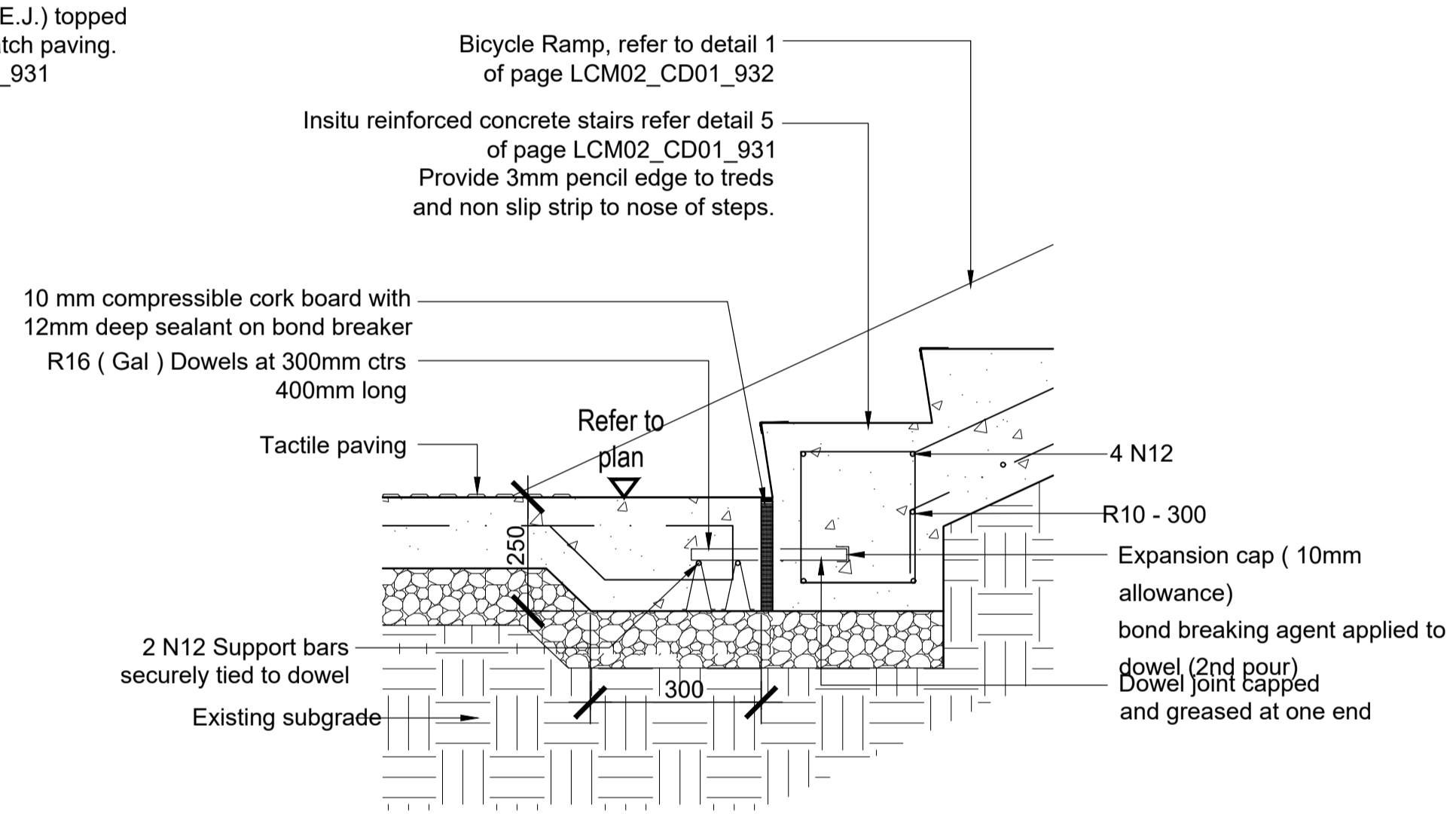
X DECOMPOSED GRANITE GRAVEL PAVING
1:10 @ A1



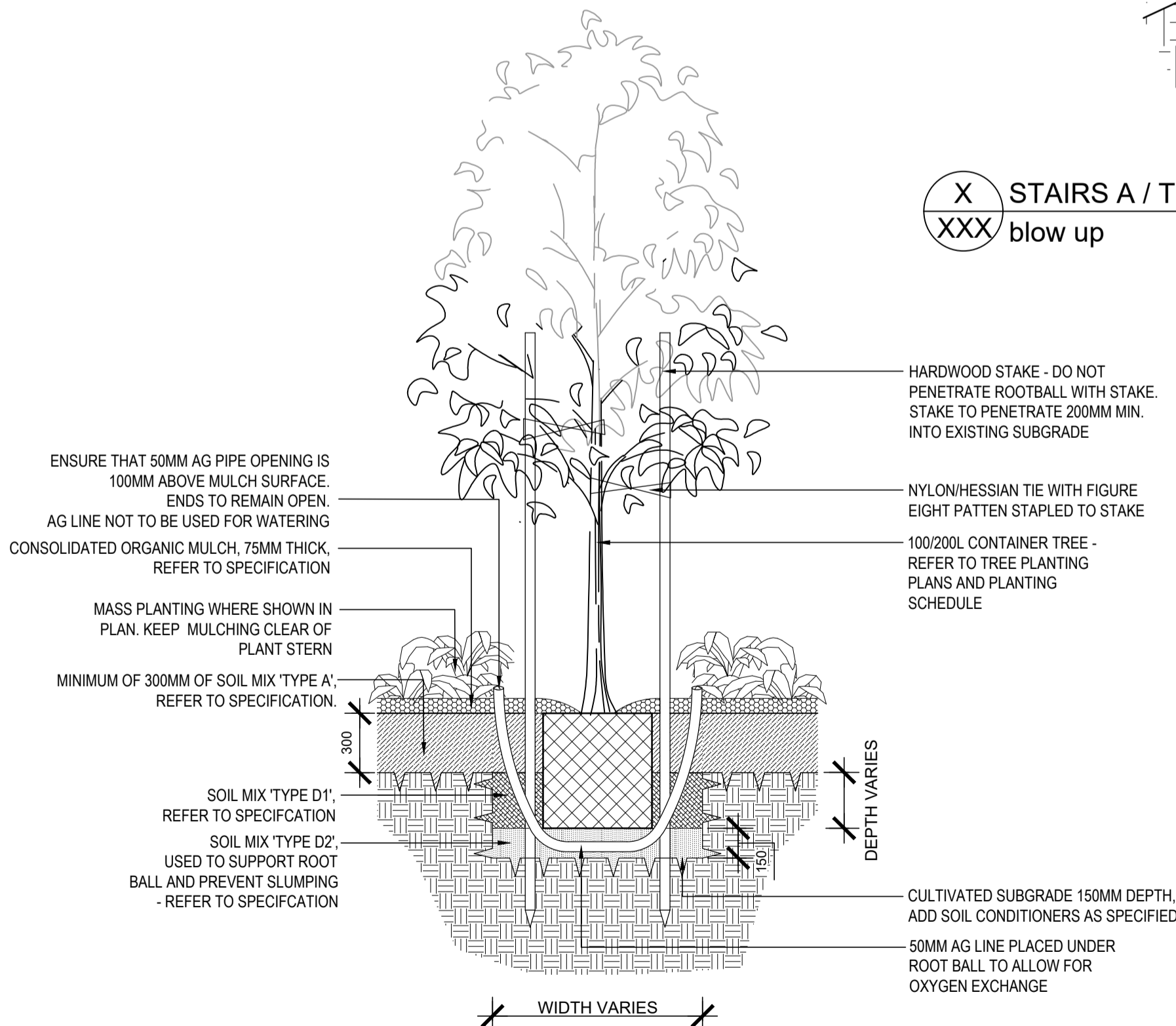
X TYPICAL TURF IN DEEP SOIL
1:10 @ A1



X STAIRS A / TOP OF STAIRS
blow up Scale 1:10

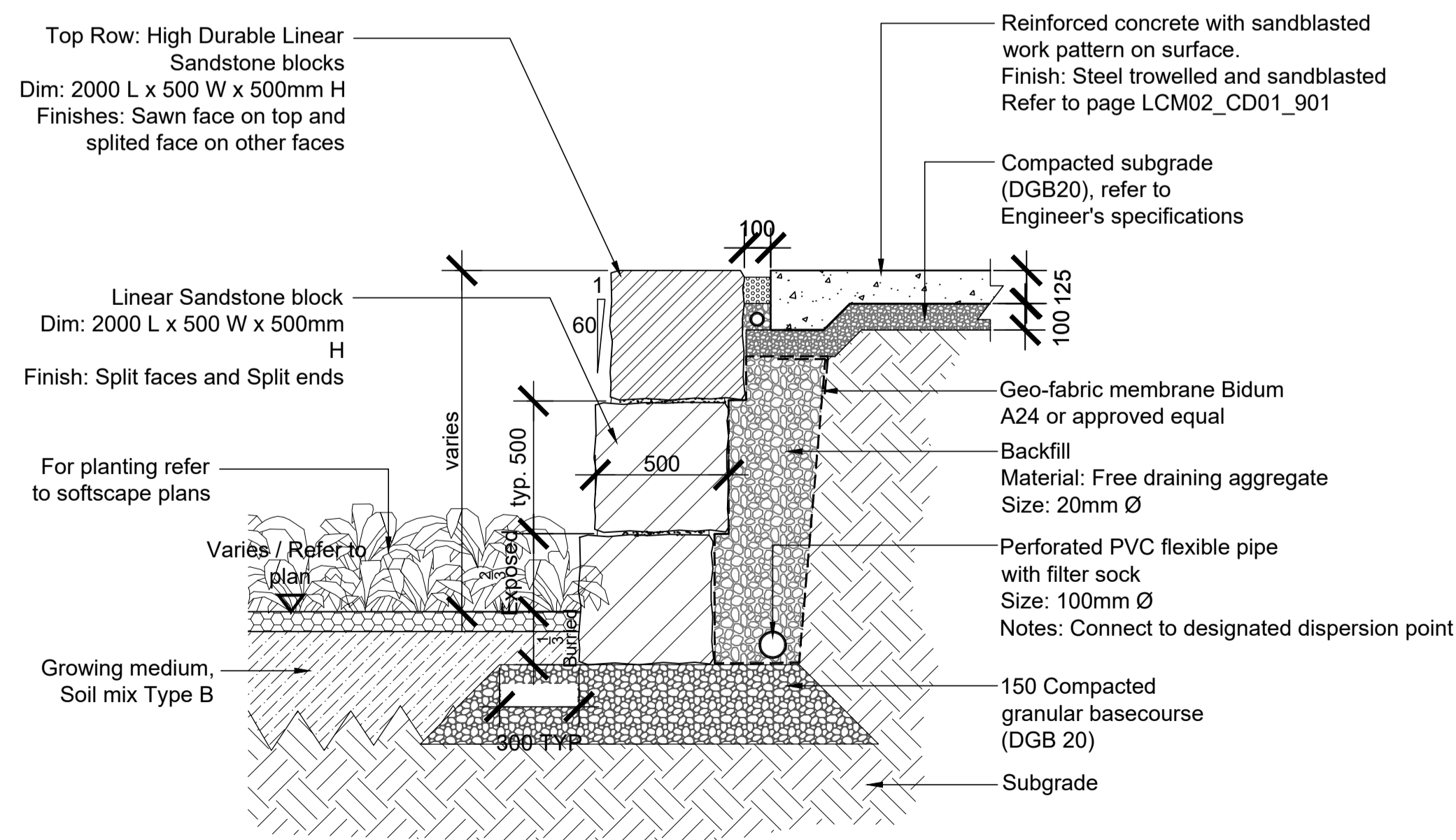


X STAIRS A / BOTTOM OF STAIRS
blow up Scale 1:10



NOTE: TREE PLANTING HOLE DIMENSIONS ACCORDING TO CONTAINER SIZE: WIDTH MIN. 3X ROOT BALL DIAMETER (MIN. 820 / 1100 / 1400mm FOR 45/75/100L CONTAINERS) AND DEPTH MIN. 150mm BELOW ROOT BALL DEPTH.

X TYPICAL TREE PLANTING
1:25 @ A1



X WALL-BALUSTRADE / STACKING BLOCKS
section Scale 1:20

Copyright Designinc Sydney Pty Limited
This drawing is protected by copyright. All rights are reserved. Unless permitted under the Copyright Act 1968, no part of this drawing may in any form or by any means be reproduced, published, broadcast or transmitted without the prior written permission of the copyright owner.
Please note
In the event of this drawing not being signed off for construction it may be subject to change, alteration or amendment at the discretion of Designinc Sydney Pty Limited. If so, Designinc Sydney Pty Limited is not liable for any loss, damage, harm or injury whether special, consequential, direct or indirect, suffered by you or any other person as a result of your use of this drawing for construction purposes.
Figured dimensions take preference to scale readings. Verify all dimensions on site. Report any discrepancies to the Architect for decision before proceeding with the work.
Nominated Architects
Anthony Quan 5421 | Sandeep Amin 7337 | Ian Armstrong 7260 | Richard Does 8126

No	DATE	REVISIONS	BY
A	14/06/2019	PRELIMINARY	JH, AW
C	12/07/2019	PRELIMINARY SS DA	JH
D	22/07/2019	SS DA	JH
E	21/04/2020	SS DA	MD

ZONE PLAN

CONSULTANTS	TRAFFIC ENGINEER	ARUP
	SERVICES ENGINEER	Ph: (02) 9329 9320
	FIRE ENGINEER	ERBAS AND ASSOCIATES
	CIVIL AND STRUCTURAL ENGINEER	Ph: (02) 9437 1022
	BCA CONSULTANT	STEPHEN GRUBITS & ASSOC.
	QUANTITY SURVEYOR	Ph: (02) 9247 1444
	PROJECT MANAGER	BIRZULIS ASSOCIATES
		Ph: (02) 9555 7230
		WILDE AND WOOLLARD
		Ph: (02) 9411 2777
		SAVILLS
		Ph: (02) 8215 8888

ARCHITECT	Designinc Lacoste + Stevenson bmc2
	architects in association
	Designinc Sydney PTY LIMITED ACN 003008820
	L12 / 77 PACIFIC HWY NORTH SYDNEY NSW 2060 AUSTRALIA
	PO BOX 651 NORTH SYDNEY NSW 2059 AUSTRALIA
	T +61 2 8905 7100 F +61 2 8905 7199
	E sydney@designinc.com.au www.designinc.com.au
	Architecture Urban Design Interiors

CLIENT	SCHOOL INFRASTRUCTURE NSW
	PROJECT
	LINDFIELD LEARNING VILLAGE
	STAGE 2 & 3
	Eton Road, Lindfield NSW 2070
	TITLE
	LANDSCAPE DETAILS

DRAWN BY	MD, SP, WL
SCALES	AS SHOWN
PLOT DATE	21/04/2020
PROJECT N°	P19-006
DRAWING N°	LA-2-2000
DRAWING STATUS	REVIEWED BY
SS DA	SH
DATE	DATE

REVISION	E
QUALITY CERTIFIED ISO 9001	Completion of the Drawing Status is evidence the design has been verified as conforming to the requirements of the Project M.S. Plan. Initiating the 'Drawn By' box confirms that this drawing has been prepared in conformity with Designinc Sydney M.S. procedures.

DEVELOPMENT APPLICATION