

Leppington Public School upgrade

Information Pack – February 2025



Artist impression of upgrade (subject to change)

Investing in our schools

As part of the NSW Government's plan to rebuild public education, the 2024-25 Budget is delivering record education funding, including \$3.6 billion for new and upgraded schools in Western Sydney. This targeted investment will ensure growing communities get access to a world class public education.

Project overview

The upgrade for Leppington Public School is in progress and will include new fit-for-purpose learning spaces and improved core facilities to support the growing student population in the area.

The upgrades will be delivered in 2 stages. Stage 1 is forecast to be finished by late 2026 and will include:



20 new permanent classrooms



3 support learning classrooms



A new hall



A new covered outdoor learning area (COLA)



Upgrade and refurbishment of the administration facilities and library

In addition to Stage 1, the 2024-25 Budget has committed funding to progress with Stage 2 of the project, providing additional school capacity for this growing community. Further details on the scope and timing of Stage 2 will be shared as the project progresses.

For more information

Phone: 1300 482 651

Email: schoolinfrastructure@det.nsw.edu.au

Website: schoolinfrastructure.nsw.gov.au





Artist impression of the new single-storey building which includes a hall, canteen and an outside of school hours care hub (subject to change)

Planning application

We are now finalising the planning application for the Stage 1 upgrade to Leppington Public School. The project will be assessed by the Department of Education as a Review of Environmental Factors (REF) under the *Environmental Planning Assessment Act 1979* (EP&A Act). All documentation for the REF will be on exhibition in the near future on our project webpage at edu.nsw.link/LeppingtonPS.

The proposed activity under the REF includes:

- Demolition of existing structures and removal of trees.
- Building of a new 3-storey teaching space along the northern boundary of the school site, which includes 20 permanent teaching spaces and 3 support teaching spaces.
- Building a new single-storey building which includes a hall, canteen and an outside of school hours care hub, towards the eastern boundary of the school site.
- Extension of the existing library (Building E) and adjoining playground.
- Upgraded sports and play facilities.
- Building a substation and upgrades to site services.
- Landscaping.

Project timeline



Proposed site plan



Connection to Country

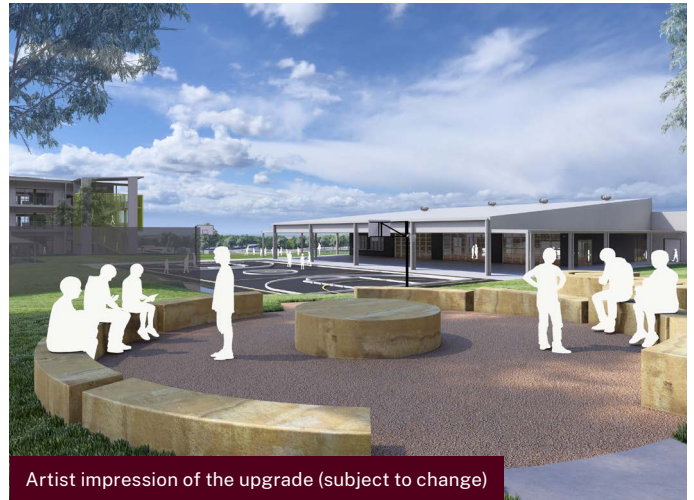
The outdoor space design at the school acknowledges Aboriginal cultural heritage through several key features:

- **Welcome/Acknowledgement Area:** At the entrance of the school, there is a designated space for welcoming and acknowledging Aboriginal culture, which reflects respect for the traditional owners of the land.
- **Native plant and tree species:** The design includes the use of native plants and trees that are indigenous to the region, which helps to create a connection to the local environment and promotes biodiversity.
- **Indigenous narrative in signage:** There is an opportunity to incorporate Indigenous stories and cultural narratives into the school signage, allowing for the celebration of Aboriginal heritage and education for students and visitors.

Together, these elements create an outdoor space that honours and reflects Aboriginal cultural heritage, fostering a sense of community and respect.



Artist impression of the upgrade (subject to change)



Artist impression of the upgrade (subject to change)

Next steps

- The REF will be on exhibition once it has been finalised and lodged.
- At the end of the exhibition period, submissions from neighbouring residents and key stakeholders will be assessed and the application will be reviewed for final determination by the Department of Education.
- Award the construction contract.
- When the contractor has been appointed, we will establish the timeline for delivery of the upgrades and share it with the school community.

More information

We are committed to working together with our school communities and stakeholders to deliver the best learning facilities for students. We will continue to distribute regular project updates to keep the community up to date with our progress. You can stay updated by visiting the project webpage at edu.nsw.link/LeppingtonPS. You can also access the project's webpage using the QR code.



Contact us

If you have any queries or concerns about this project, please contact School Infrastructure:

Website: schoolinfrastructure.nsw.gov.au

Email: schoolinfrastructure@det.nsw.edu.au

Phone: 1300 482 651 (during business hours)



For a Translation and Interpreting Service call 131 450 and ask them to call the Department of Education – School Infrastructure on 1300 482 651.