

Lennox Head Public School

Community update

June 2022

Early planning is underway for the relocation of Lennox Head Public School to a new site. The NSW Government is committed to providing a new school for the Lennox Head community as soon as practically possible.

To fast track the project, processes like securing a new site and developing the business case are happening in parallel. Procurement of consultants like architects is being done ahead of time so design can start as soon as a new site is identified. The design and build phases will also be fast tracked through standardised design and modern methods of construction.

The department will continue to look for ways to streamline the process while still complying with best practice and the government's infrastructure project governance requirements.

Securing a new site

During May and June 2022, the NSW Government conducted an Expressions of Interest (EOI) campaign inviting private landowners and developers in the region to let us know if they are interested in selling land for a school site. The EOIs closed on 12 June 2022 and the submissions are currently being evaluated.

A property consultant has also been engaged to conduct a search of possible development sites in the area, including sites that may not be currently on the market.

The outcome of these processes will be a shortlist of potential new school sites for the department to consider. Due diligence investigations will be carried out on the shortlist, including a review of the site sizes and transport connections, as well as site investigations. An update will be provided to the community once these confidential processes are complete.

Progressing the business case

Funding for the project has been allocated in the 2022 / 2023 budget, however the department is still required to submit a business case for review by NSW Treasury before the project is formally approved to proceed. This is standard for all public infrastructure projects in NSW.

The business case will explore the rationale and case for the development, including needs analysis and population projections. Once a site is identified, an initial masterplan will be developed to include in the business case, along with site due diligence, environmental and heritage reports and traffic feasibility studies.

Operating respectfully on the current site

The NSW Department of Education is committed to operating on the current site in a way that respects the traditional custodians of the land and recognises the cultural significance of the site.

Under NSW Government legislation, all maintenance work and the use of the grounds at the school are subject to the conditions of an Aboriginal Heritage Impact Permit (AHIP) and the management plans that fall under it. There are, and will continue to be, areas of the school that are 'no-go' zones or areas that need to be used differently.

The department will continue to collaborate with the school and key stakeholders in the Aboriginal community on the management of the site, any works to be undertaken, and use of the site going forward.

For more information contact:

School Infrastructure NSW
Email: schoolinfrastructure@det.nsw.edu.au
Phone: 1300 482 651
www.schoolinfrastructure.nsw.gov.au

Frequently asked questions

Will the project to build a new school definitely go ahead?

Yes. The need for a public school for the Lennox Head community is already demonstrated by the existing school and the NSW Government is committed to providing a new school for the community.

Funding for the project has been allocated in the 2022 / 2023 budget. Early planning is underway and once the necessary approvals have been granted the project will proceed to design and construction.

How many students will the relocated school cater for?

The scope of the new project, including the number of students the school should cater for, will be determined based on consideration of the current and projected service need in the region.

To determine the service need, we use NSW Department of Planning and Environment population projections to 2036 as a starting point. The department's service planners then interrogate the data, work with local councils to understand local development outlooks, and review enrolment data for all schools in the local network.

Will the relocated school have the same facilities currently at Lennox Head Public School?

The relocated school will have all the facilities to meet the curriculum set by NESA and the department's Educational Facilities, Standards and Guidelines (EFSG).

All public schools have core facilities including a library, canteen, administration and staff facilities as standard, and required amounts of covered outdoor learning and play spaces. The size of these core facilities and the number of general learning spaces will depend on the number of students to be accommodated.

How long will it take to build the new school?

The construction program will be developed later in the process once design is complete and a building contractor has been engaged. Typically, it may take between 6 and 12 months to receive development consent and a typical construction program for projects of this type is around 18 months. Where possible the department adopts a standardised design approach and modern methods of construction to deliver new schools more quickly than a traditional build.

What will happen to the existing school site when the school relocates?

We are in the very early planning stages. The future of the current Lennox Head Public School site will need to be determined when the new school project is underway, and in close consultation with key stakeholders.

How can I stay informed about the project?

The Lennox Head Public School page on the SINSW website will continue to have up-to-date information about the project as well as any upcoming community engagement opportunities.

You can also contact School Infrastructure NSW by emailing schoolinfrastructure@det.nsw.edu.au or calling the community phone line – 1300 482 651.

For more information contact:

School Infrastructure NSW
Email: schoolinfrastructure@det.nsw.edu.au
Phone: 1300 482 651
www.schoolinfrastructure.nsw.gov.au

What is the process for planning, designing and building a new school?

The illustration below outlines the phases of a school infrastructure project and what takes place during each phase. We will continue to provide updates to the community as the project progresses.

Early planning

- Consideration and studies of demographic trends, education requirements, the condition of the existing school buildings, catchment boundaries, heritage requirements, transport links and partnership opportunities.
- Doing so means that we:
 - consider the needs of the local area now and into the future.
 - ensure the right school is designed for the community.
- An important step before an architect or other contractors are appointed and official community engagement commences.

Planning

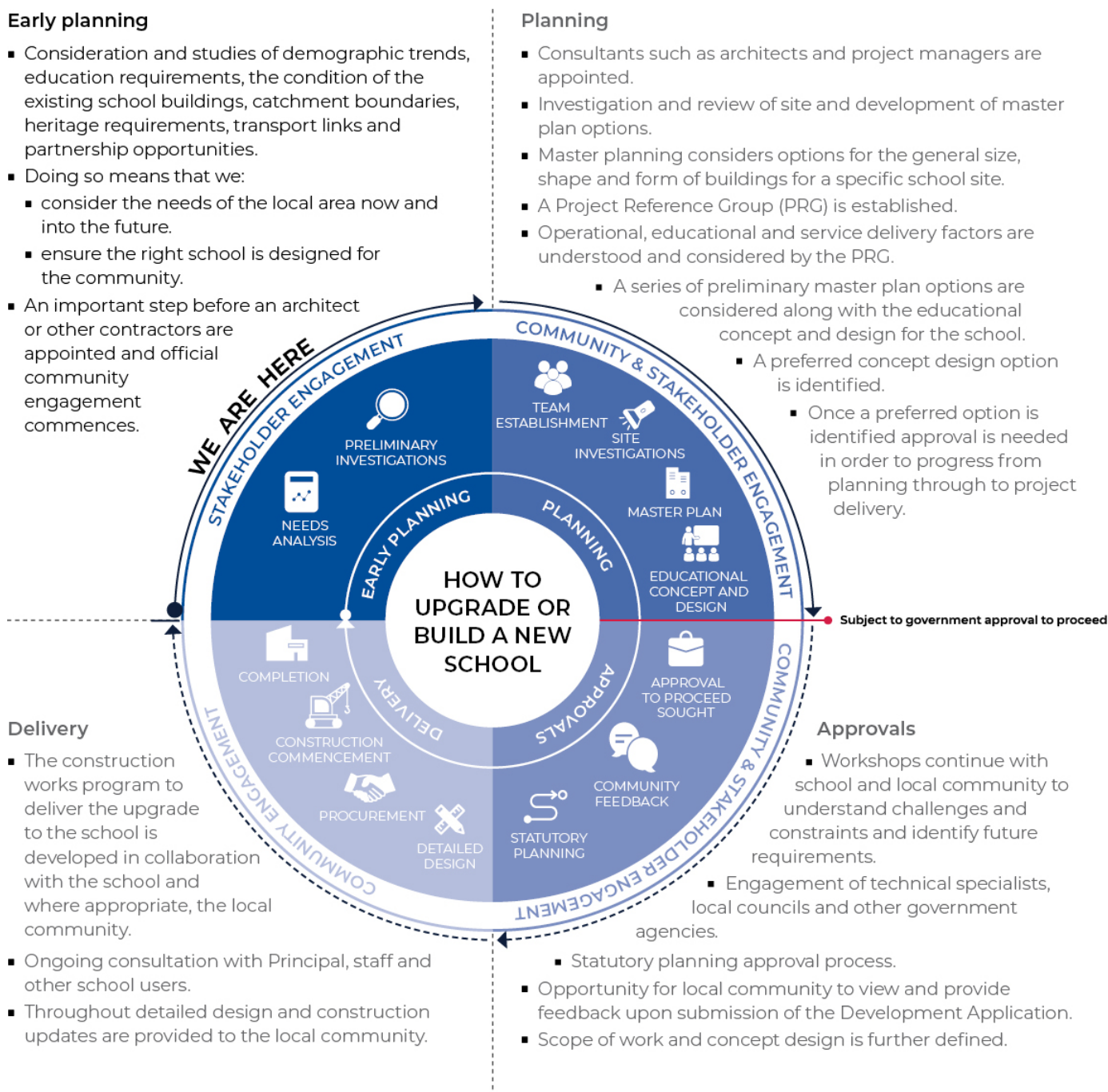
- Consultants such as architects and project managers are appointed.
- Investigation and review of site and development of master plan options.
- Master planning considers options for the general size, shape and form of buildings for a specific school site.
- A Project Reference Group (PRG) is established.
- Operational, educational and service delivery factors are understood and considered by the PRG.
- A series of preliminary master plan options are considered along with the educational concept and design for the school.
 - A preferred concept design option is identified.
 - Once a preferred option is identified approval is needed in order to progress from planning through to project delivery.

Delivery

- The construction works program to deliver the upgrade to the school is developed in collaboration with the school and where appropriate, the local community.
- Ongoing consultation with Principal, staff and other school users.
- Throughout detailed design and construction updates are provided to the local community.

Approvals

- Workshops continue with school and local community to understand challenges and constraints and identify future requirements.
- Engagement of technical specialists, local councils and other government agencies.
- Statutory planning approval process.
- Opportunity for local community to view and provide feedback upon submission of the Development Application.
- Scope of work and concept design is further defined.



For more information contact:

School Infrastructure NSW
 Email: schoolinfrastructure@det.nsw.edu.au
 Phone: 1300 482 651
www.schoolinfrastructure.nsw.gov.au