

CARPARK ENTRY

BEEHAG ST

PUBLIC SPACE

STREET FRONTAGE

SEATING TERRACE

CARPARK

MULTICOURT

ACTIVE PLAY

STREET FRONTAGE

FREE PLAY

EVENTS ASSEMBLY

STREET FRONTAGE

MEETING PLACE

LUNCH SEATING

QUIET PLAY

ACTIVE PLAY

SPECIAL NEED AREA

SCREENING

SCREENING

LINK TO EXISTING COMMUNITY GARDEN

OUTDOOR LEARNING

OUTDOOR LEARNING

COMMUNITY ENTRY

MAIN ENTRY

JACOBSON AVE



LEGEND

- | | | | |
|--|--|--|--|
| | EXISTING STREET TREES TO BE RETAINED & PROTECTED | | TIMBER / WOODGRAIN ALUMINIUM |
| | EXISTING STREET TREE TO BE REMOVED | | ASPHALT |
| | EXISTING TREES TO BE RETAINED AND PROTECTED - REFER TO ARBORIST REPORT | | DRY CREEK |
| | PROPOSED NATIVE TREES | | TIMBER BRIDGES |
| | PROPOSED DECIDUOUS TREES | | DEDICATED PUBLIC SPACE |
| | SCREENING / HEDGING PLANTS | | 500 x 500 x 1000 mm SANDSTONE BLOCKS / SEATING |
| | NEW PLANTING AREAS | | ROCKS / BOULDERS |
| | TURF | | STEPPING STONES |
| | ARTIFICIAL TURF | | ALUMINIUM SEATING |
| | BRICK OR CONCRETE PAVERS | | SHADE STRUCTURE |
| | COLOURED CONCRETE | | EXISTING LEVELS |
| | DECOMPOSED GRANITE | | PROPOSED LEVELS |
| | PLAYGROUND MULCH | | FENCE |

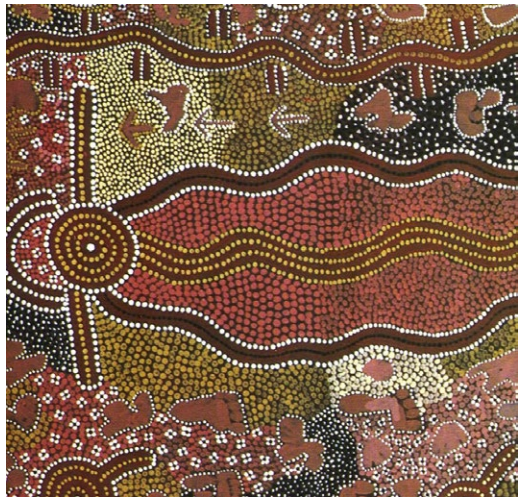
SCALE 1:200 @ A1

0 1 5m 10m 15m





Play area arrangement was inspired by aboriginal paintings. Small nucleus with play elements are inter-connected by pathways and culminating in a ‘meeting place’.
(Aboriginal painting by Naata Nungurrayi , National Art Gallery, Canberra)



A meeting place or amphitheatre can be used for school events, performance stage, outdoor classroom or simply lunch eating. The circular shape reflects aboriginal symbology. (“Water Dreaming”, by Dick Pantimatju Tjupurrula; in Isaacs, J (2000) Australia’s Living Heritage)



Circular benches and green area will define the rear of the school building providing interconnected multipurpose outdoor classroom areas.



Sculptured play elements may be incorporated in the play area, designed & prefabricated by local artists.
Sculptural elements by Fiona Foley, Hamilton Northshore Park-land.



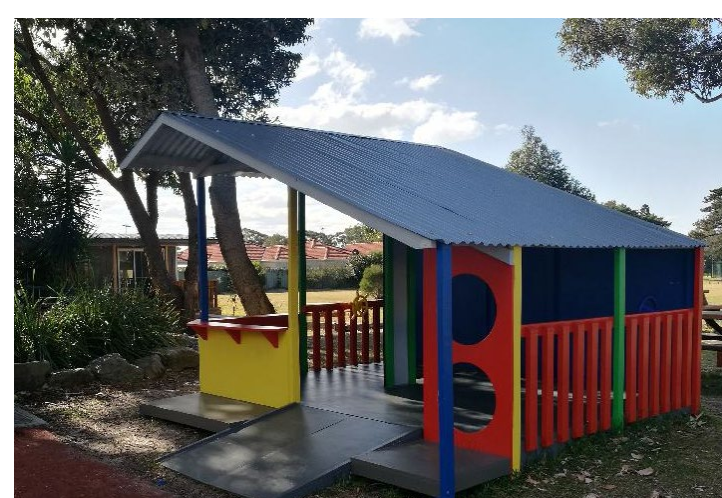
Existing mosaic wall could be re-used



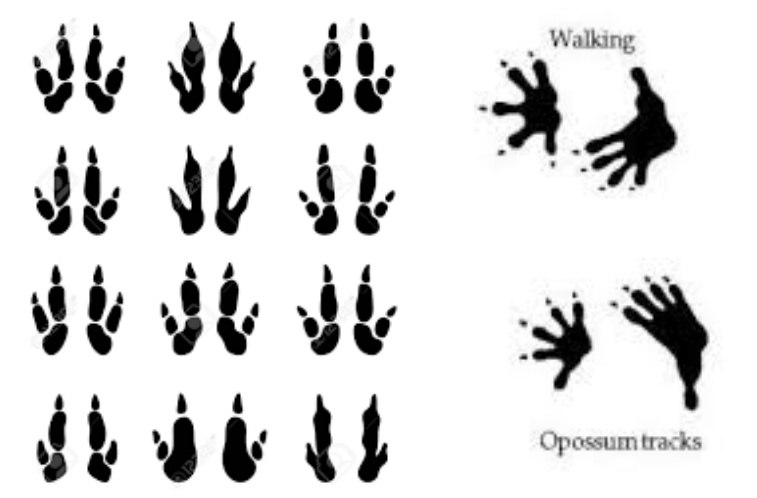
Existing memorial plaques will be relocated into new meeting place.



Coastal theme may be represented in various forms of art.



Existing cubby house could be relocated and re-use in the new play area.



Kangaroo and possum footprints inspire the tracks configuration in the play area.



A texture of brick paving can represent waves of the nearby coastal landscape.



Two small timber bridges will cross a “dry river bed”



“Nature play” will include some natural rocks, pebbles and low native plantings

A snake like element can be incorporated into the paving.



A challenging nature play timber element.

PROPOSED PLANT SCHEDULE

Botanical Name	Common Name	Indicative N.	Size	Height at planting
NATIVE TREES up to 30 m height around perimeter				
<i>Angophora costata</i>	Sydney Red Gum	2	150 L	2.5 m
<i>Eucalyptus citriodora</i>	Lemon Scented Gum	8	75 L	2 .5m
<i>Eucalyptus robusta</i>	Swamp mahagony	5	75 L	2.5 m
<i>Lophostemon confertus</i>	Brushbox	2	75 L	2.5 m
<i>Podocarpus elatus</i>	Plum Pine	2	75 L	1.8 m
TREES SMALL / MEDIUM up to height 12 m				
<i>Acer freemanii</i> 'Autumn Blaze'	Maple Autumn Blaze	4	100 L	2.0 m
<i>Angophora hispida</i>	Dwarf Apple	3	45 L	1.2 m
<i>Banksia integrifolia</i>	Coastal Banksia	5	45 L	1.8 m
<i>Banksia marginata</i>	Smooth leafed Banksia	2	25 L	
<i>Banksia serrata</i>	Old Man banksia	3	45 L	1.2 m
<i>Calistemon viminalis</i>	Bottlebrush	3	45 L	1.5 m
<i>Corymbia ficifolia</i> "Lollypops", "Summer Beauty", "Snow Flake", "Wild Sunset"	Dwarf Flowering Gum cvs	2	75 L	1.2 m
<i>Cupaniopsis anacaroides</i>	Tuckeroo	5	100 L	2.5 m
<i>Elaeocarpus reticulatus</i>	Blueberry Ash	3	45 L	1.8 m
<i>Eucalyptus citriodora</i> 'Dwarf Pink'	Lemon Scented Gum cv	2	45 L	1.2 m
<i>Hibiscus tiliaceus</i> 'Rubra'	Native Hibiscus	5	100 L	1.8 m
<i>Tristaniopsis laurina</i> 'Luscious'	Water Gum	5	75 L	1.8 m
ORNAMENTAL SHRUBS / FEATURE PLANTS (up to 3 m high)				
<i>Callistemon 'Red Rover'</i>	Bottlebrush	100	200 mm	0.3 m
<i>Callistemon citrinus</i>	Bottlebrush	100	200 mm	0.3 m
<i>Doryanthes excelsa</i>	Gymea Lily	12	300 mm	0.6 m
<i>Loropetalum chinense</i> 'Purple Pixie'	Chinese Fringe Flower - dwarf	30	200 mm	0.3 m
<i>Melaleuca thymifolia</i> 'Purple Lace'	Honey Myrtle	50	150 mm	0.3 m
<i>Westringia fruticosa</i> 'Mundi'	Dwarf Coastal Rosemary	220	200 mm	0.3 m
GROUNDCOVERS / NATIVE GRASSES/CLIMBERS				
<i>Carpobrorus glaucescens</i>	Pig Face		100 mm	
<i>Dianella caerulea</i> 'Lucia'	Blue Flax Lily		150 mm	0.2 m
<i>Hardebergia regent</i>	False sarsparilla		140 mm	0.2 m
<i>Lomandra confertifolia</i> 'Pallida"	Lime Turf		100 mm	0.2 m
<i>Pandorea pandorana</i>	Wonga Wonga Vine		140 mm	0.3 m
<i>Rosmarinus officinalis</i> ' prostrate'	Prostrate Rosemary		150 mm	0.3 m
TOTAL		10011		
EDIBLE / BUSH TUCKER PLANTS				
TREES				
<i>Backhousia citriodora</i>	Lemon Myrtle	2	45 L	1.2 m
<i>Citrus aurantifolia</i> 'Tahitian Lime'	Tahitian Lime	2	100 L	1.5 m
<i>Citrus limon</i>	Lemon Tree	2	100 L	1.5 m
OTHERS				
<i>Alpinia galanga</i>	Galangal	10	140 mm	0.2 m
<i>Austromyrtus dulcis</i>	Midgen Berry	20	140 mm	0.2 m
<i>Colocasia esculenta</i>	Taro	5	140 mm	0.3 m
<i>Mentha australis</i>	Native River Mint		140 mm	0.15 m
<i>Passiflora edulis</i>	Passion fruit		75 mm	0.15 m

NATIVE TREES



Angophora costata
Sydney Red Gum



Eucalyptus citriodora
Lemon scented Gum



Lophostemon confertus
Brushbox

SMALL / MEDIUM TREES



Banksia integrifolia
Coastal Banksia



Callistemon viminalis
Bottle Brush



Cupaniopsis anacardioides
Tuckeroo



Elaeocarpus reticulatus
Blueberry Ash

ORNAMENTAL SHRUBS/
FEATURE PLANTS

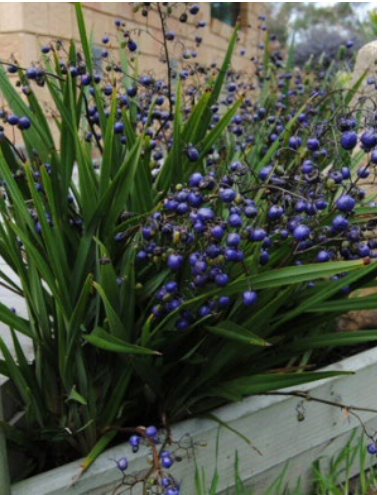


Doryanthes excelsa
Gymea Lily

GROUNDCOVERS /GRASSES/NATIVE GRASSES



Carpobrorus glaucescens
Pig Face



Dianella caerulea 'Lucia'
Blue Flax Lily



Hardebergia regent
False sarsparilla

EDIBLE / BUSH TUCKER PLANTS



Austromyrtus dulcis
Midgen Berry



Alpinia galanga
Galangal



Mentha australis
Native River Mint



Passiflora edulis
Passion fruit