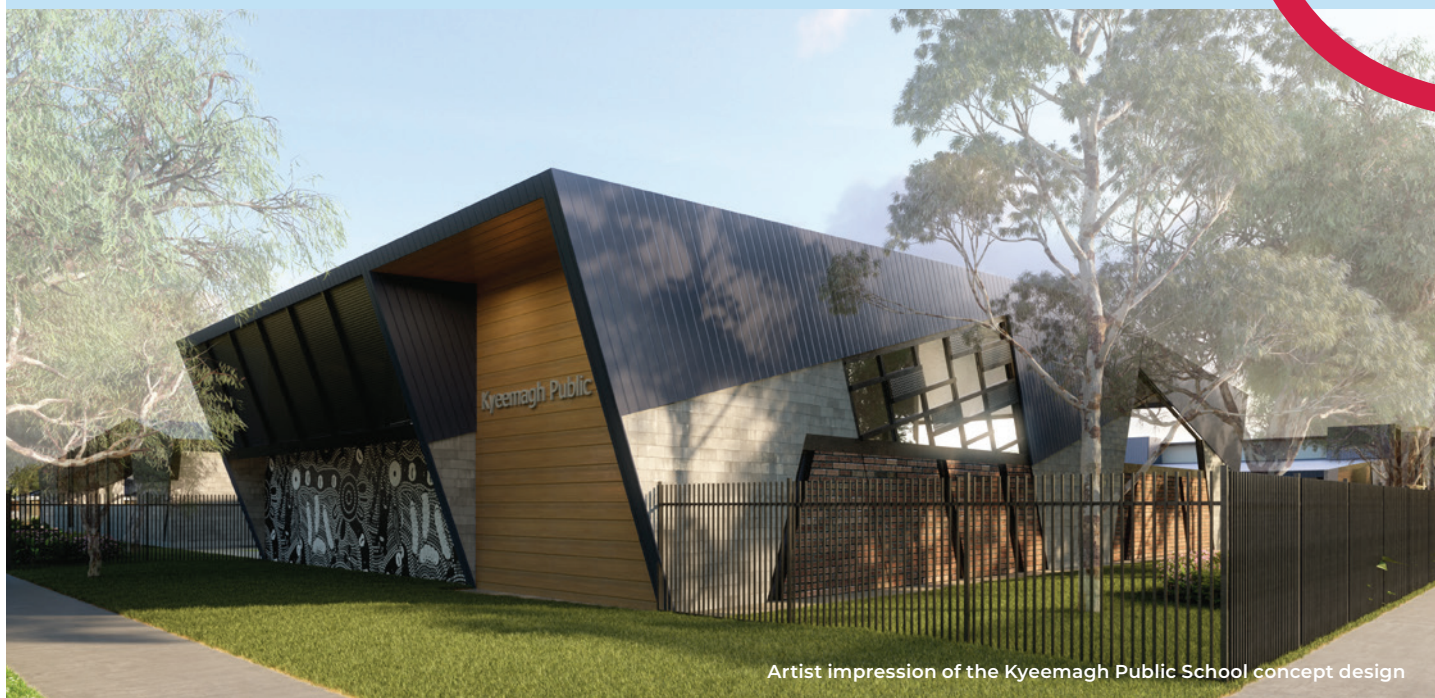


Kyeemagh Public School

Information pack | June 2021



Artist impression of the Kyeemagh Public School concept design

The NSW Government is investing \$7.9 billion over the next four years, continuing its program to deliver 215 new and upgraded schools to support communities across NSW. This is the largest investment in public education infrastructure in the history of NSW.

The NSW Department of Education is committed to delivering new and upgraded schools for communities across NSW. The delivery of these important projects is essential to the future learning needs of our students and supports growth in the local economy.

The Kyeemagh Public School major works are nearing completion.

The new facilities will include:



**17 flexible
learning spaces**



**New staff and
administration
amenities**



A new library



A new nature-based playground



**New outdoor learning
space and landscaping**

Getting ready for Term 3 2021

Where do I go on my first day of Term 3?

On the first day of Term 3 (Tuesday 13 July), all students will be asked to assemble in the locations shown on the adjacent map.

- Kindergarten to Year One (Banskia): opposite the nature-based playground
- Year 2 to 5 (Grevillea and Lilly Pilly): rear of the library doors

Teachers and staff from School Infrastructure NSW will be at the school entry and within the school grounds to help direct students on the day.

If wet weather occurs, students will assemble between the library and office space until staff escort them to their learning spaces.

Driving to school

To help keep children safe, manage traffic flow and minimise congestion Bayside Council has introduced new parking restrictions around the school. The new rules will be in place from 12 July 2021.

These are outlined below:

Kiss and drop zones on Jacobson Avenue

8:00am to 9:30am and 2:30pm to 4:00pm (Monday to Friday)

Bus zone on Beegahag Street

5:30am to 7:00pm (Monday to Friday)

Bus zone on Jacobson Avenue

7:30am to 8:30am and 2:30pm to 3:30pm (Monday to Friday)

No stopping zone on Tancred Avenue, between Mutch Avenue and Jacobson Avenue.

There is limited parking available at and around the school. We encourage parents and carers to use the kiss and drop zones around the school. See the adjacent map for kiss and drop locations.

Parking in a safe location, such as Kyeemagh Boat Ramp Reserve or Mutch Avenue and walking the remaining distance to school is another recommended travel option.

There is no school parking permitted at the North Brighton Preschool car park.

Please comply with the new traffic and road rules around the school.

School entry

From Term 3 2021, school entry will occur via the main gates off Jacobson Avenue.

The entry on Beehag Ave will be closed.

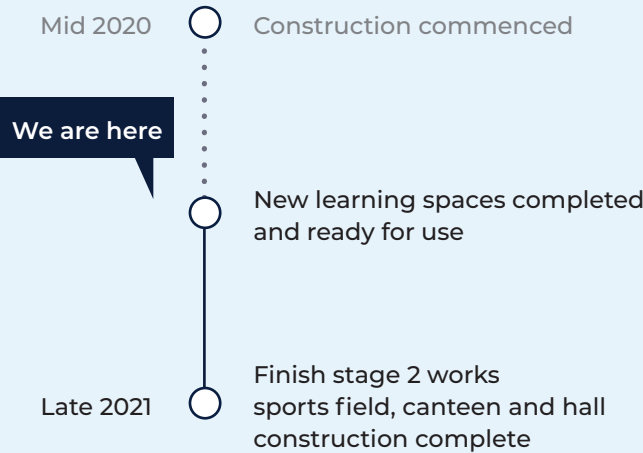
Kiss and drop zones

Two kiss and drop zones are now located on Jacobson Avenue. As indicated on the adjacent map. Locations will be signposted. Please comply with the road rules.

Site plan



Indicative timeline



Work occurring during the school holidays

During the July school holidays, work will continue to take place onsite. Upcoming works will include:

- relocation of learning equipment to the new learning spaces
- public domain works around the school, including new footpath installation and new pedestrian access points
- removal of the temporary home bases from the school site.



Frequently asked questions

When will students and teachers start using the new facilities?

Students and staff will officially start using the new facilities from Term 3.

Students resume school on Tuesday 13 July.

Have the school entrance points changed?

Yes, commencing from Term 3, all students will enter via the new main entrance on Jacobson Avenue.

Can I still enter the school via Beehag Street?

No, the Beehag school entry will be closed at the end of Term 2.

What works remain to be completed in 2021?

The following works will be completed by late 2021:

- the new multicourt sports space
- a new canteen
- the new hall
- staff car park upgrades
- a covered outdoor learning area (COLA).

Who can I contact if I have enquiries about construction work over the holidays?

If you have any enquiries about this project you can contact School Infrastructure NSW during business hours on 1300 482 651. In an emergency, call triple zero (000).

Contact us

For more information about this project contact School Infrastructure NSW:

Website: schoolinfrastructure.nsw.gov.au

Email: schoolinfrastructure@det.nsw.edu.au

Phone: 1300 482 651

For information about school activities and operations, contact the school directly:

Principal: Rebecca Ferguson

Website: kyeemaghin-p.schools.nsw.gov.au

Email: kyeemaghin-p.school@det.nsw.edu.au

Phone: 02 9567 5819